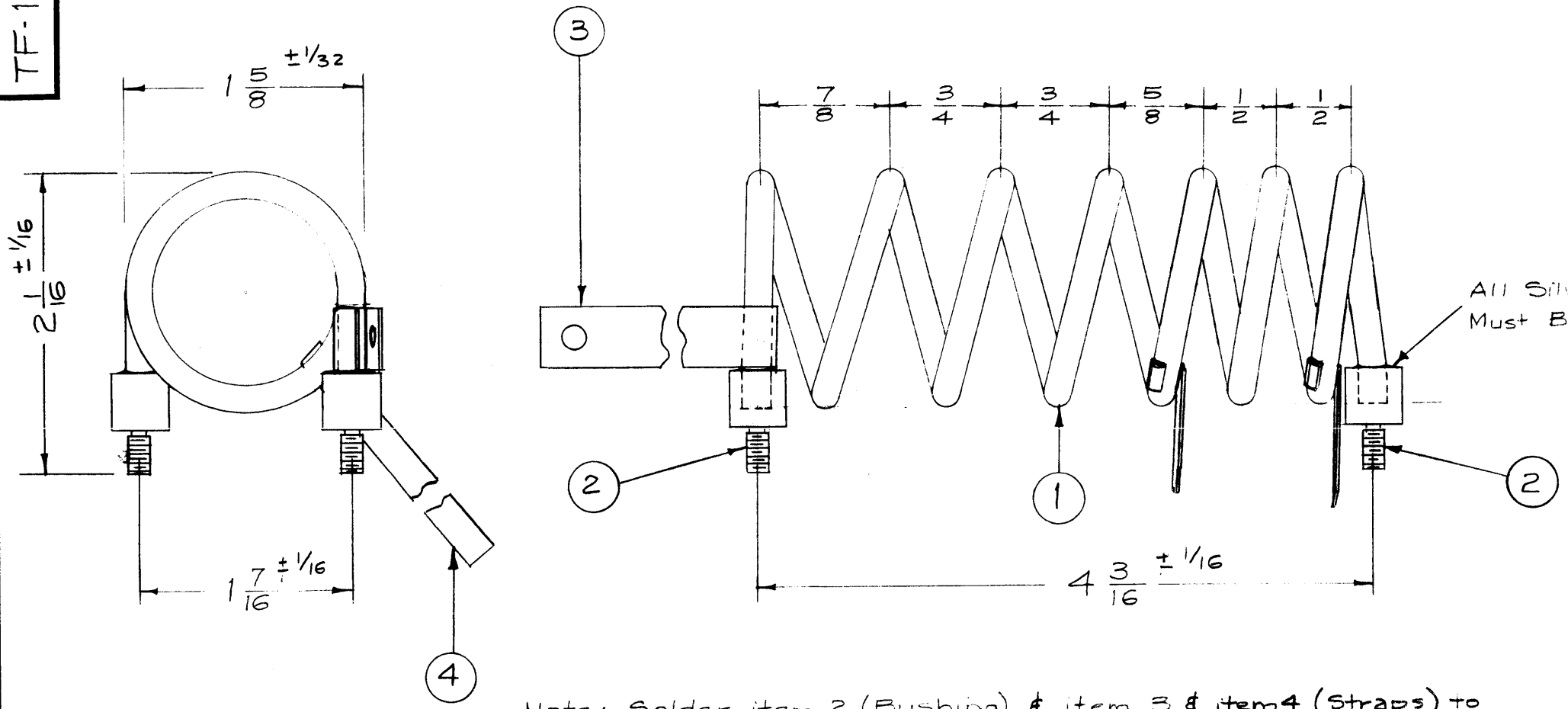


NOTICE TO PERSONS RECEIVING THIS DRAWING

THE TECHNICAL MATERIEL CORPORATION claims proprietary right in the material disclosed herein. This drawing is issued in confidence for engineering information only and may not be reproduced or used to manufacture anything shown hereon without permission from THE TECHNICAL MATERIEL CORPORATION to the user. This drawing is loaned for mutual assistance and is subject to recall at any time.

Property of:  
THE TECHNICAL MATERIEL CORPORATION  
MAMARONECK, NEW YORK



ELECTRICAL SPEC:  
Inductance -

MECHANICAL SPEC:  
Winding Direction - CCW  
No. of Turns - 6-1/2

Note: Solder item 2 (Bushing) & item 3 & item 4 (Straps) to item 1 (Coil) with item 5 (Silver Solder). Then Silver Plate entire unit.

REQ.	ITEM	PART NO.	DESCRIPTION	SYMBOL		
X	5	BS-101-1	Solder, Silver			
2	4	MS-203-1-2.00	Lead, Connecting, 1/4 Wide	2" lg.		
1	3	MS-202-4-7.00	Lead, Connecting, 7/16 Wide	7" lg.		
2	2	PM-491	Bushing, Transformer			
X	1	TU-100-3N	Tubing, Copper (3/16 OD x .127 ID)			
			<b>THE TECHNICAL MATERIEL CORP.</b> MAMARONECK, NEW YORK			
STOCK SIZE			TRANSFORMER, RF, FIXED, 16-32 MC (T208)			
MATERIAL						
			16 5/16 x 1/8	A.J.J.		
		TYPE & TEMPER	HEAT TREAT. SPEC.	DRAWN	CHECKED	FINAL APPROVAL
		S-245 Silver Plate	.0005	WYO	RFB	TF-188 B
		FINISH & SPEC. NO.		ELEC. DES. APP.	MECH. DES. APP.	

ISSUE	ITEM	CHANGED FROM	DATE	CH. NO.	DRAFTS	CHECKER	ENG. APP.
B	1	ITEM 4 TAPS MOVED DOWN ON TURNS	6/25/58	2	16	Jude	AJM
A	1	Bushing Size chgd (item 2) Height Added (2 1/16) WAS 6 1/2	6/15/58	1	16	Jude	AJM

TOLERANCES: SCALE: FULL

DEC. DIM. ±  
FRAC. DIM. ±  
ANGULAR DIM. ±

A

MAXIMUM ALLOWABLE TOLERANCES HAVE BEEN DETERMINED AND ANY DEVIATIONS WILL BE CAUSE FOR REJECTION. REMOVE ALL BURRS AND SHARP EDGES

REQ. PER UNIT	MODEL	PROJECT NO.	ASS'Y. NO.	DATE
1	RFA-1	PAL-350	T208	5-24-58
USED ON				