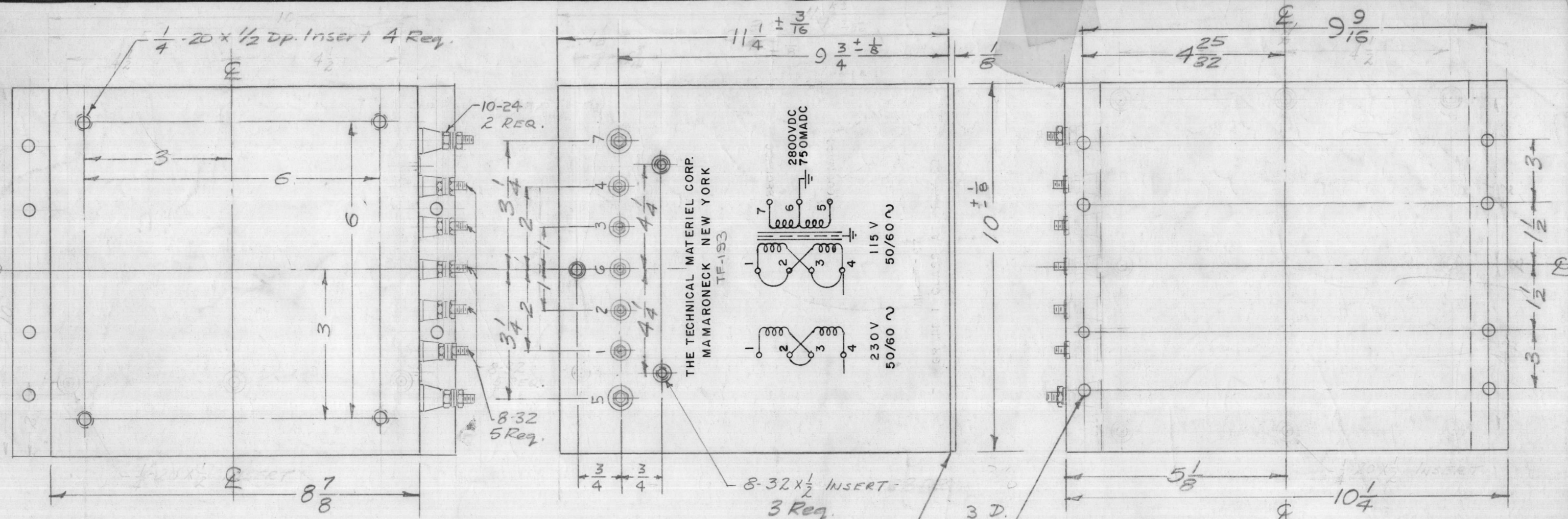


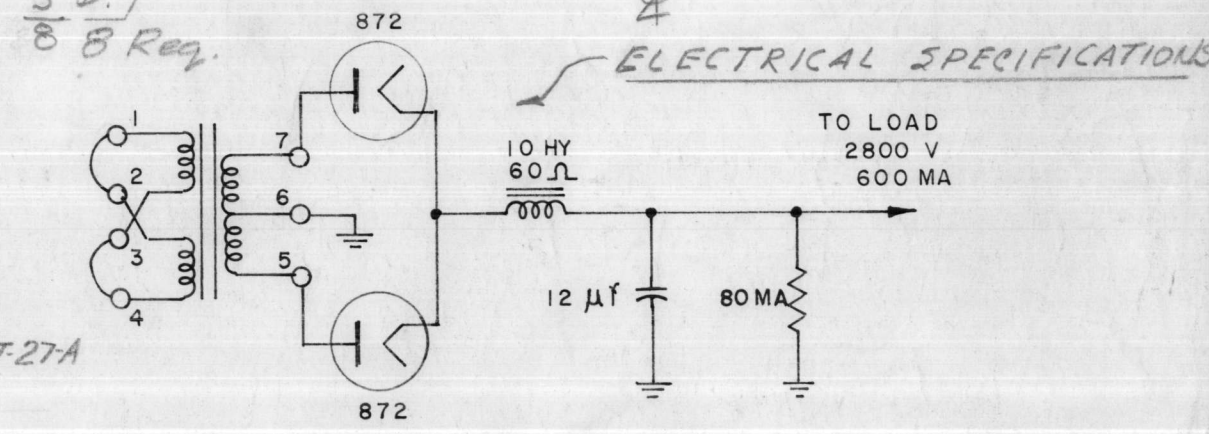
TF-193



MECHANICAL SPECIFICATIONS-
 CASE - STEEL, HERMETICALLY SEALED, RECTANGULAR
 COLOR - TMC SMOOTH GRAY S-115
 INSERTS - 1/4-20 x 1/2 DEEP - 4 REQ.
 8-32 x 1/2 DEEP - 3 REQ.
 SIZE - 8 7/8 x 10 x 11 1/4 EXCLUSIVE OF TERMINALS AND MOUNTING PLATE LIPS.

1/8 Plate Welded to TRANSFORMER (10 x 10 1/4)

NOTE: MANUFACTURED IN ACCORDANCE WITH MIL SPEC T-27A EXCEPT THAT MIL SPEC T-27-A SHALL NOT APPEAR ON CASE AND QUALIFICATION TESTING IS NOT REQUIRED.



TRANSFORMER TO BE USED IN CIRCUIT AS ABOVE
 PRIMARY - 115/230 V. A.C., 50/60 CPS.
 SECONDARY - 2800 V, 750 MA. ACROSS LOAD
 ELECTROSTATIC SHIELD SHALL BE INSERTED (FOIL)

F	TOL ADDED, INSERTS QTY. CLAR.	9-13-67	18486	H.G.		EFM		
E	1 10-24 THD WAS 10-32	9-10-63	9918	YAP				
D	2 IN SPECS. 750 MA WAS 600 MA.	7-30-63	9673	AK.				
C	1 IN PICT. 750MADC WAS 600MADC							
C	2 Pins 5 & 7 H.V. (clarified)	11-17-61	5906	L. L.				
B	1 115V Was 118V On Pictorial							
B	1 Pin 2 Was Pin 3 On 230V Oper.							
A	1 NOTE ADDED (MIL T-27A)	6-29-60	2572					
A	1 3/8 DIA WAS 5/32 D	6/8/59						
ISSUE	ITEM	CHANGED FROM	DATE	CH. NO.	DRAFTS	CHECKER	ENG. APP.	
TOLERANCES		SCALE: 2-1246						
DIM. ±		MAXIMUM ALLOWABLE TOLERANCES HAVE BEEN DETERMINED AND ANY DEVIATIONS WILL BE CAUSE FOR REJECTION.						
DIM. ±		REMOVE ALL BURRS AND SHARP EDGES						
DIM. ±								

Notice to Persons Receiving This Drawing
 THE TECHNICAL MATERIEL CORPORATION claims proprietary right in the material disclosed herein. This drawing is issued in confidence for engineering information only and may not be reproduced or used to manufacture anything shown hereon without permission from THE TECHNICAL MATERIEL CORPORATION to the user. This drawing is loaned for mutual assistance and is subject to recall at any time.
 Property of THE TECHNICAL MATERIEL CORPORATION MAMARONECK, NEW YORK

REQ. ITEM	PART NO.	DESCRIPTION	SYMBOL
THE TECHNICAL MATERIEL CORP. MAMARONECK. NEW YORK			
STOCK SIZE			
TRANSFORMER, POWER, STEP-UP			
MATERIAL			
TYPE & TEMPER	HEAT TREAT. SPEC.	DRAWN	CHECKED
		FILE	A. J. J.
		RFB	TF-193
FINISH & SPEC. NO.		ELEC. DES. APP.	MECH. DES. APP.