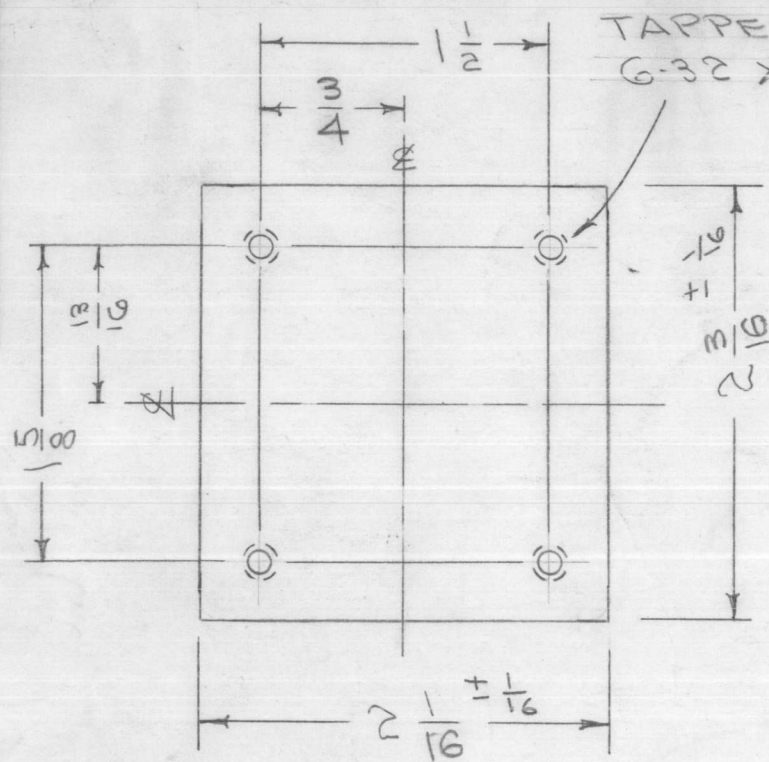
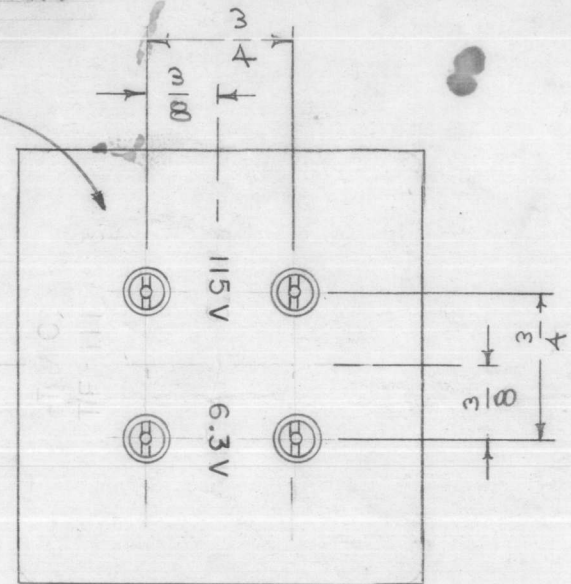
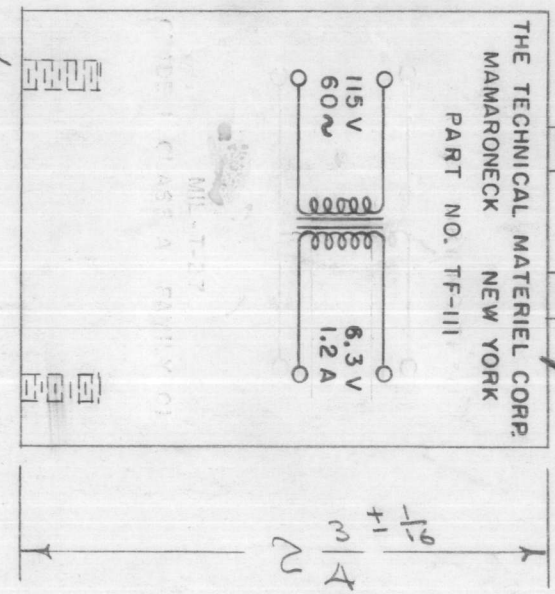


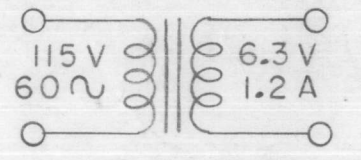
TF-III E



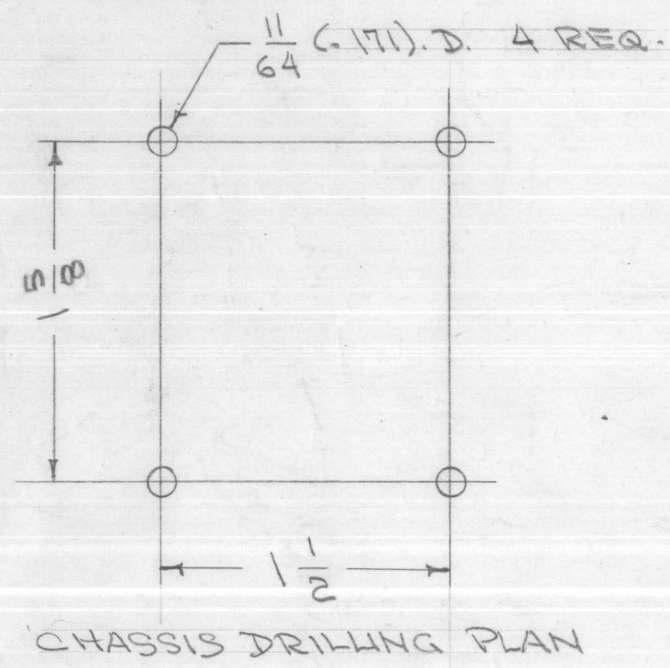
1/8" HIGH METAL STAMP AS SHOWN



STAMP SCHEMATIC AS SHOWN ON THIS SIDE - BLACK GOTHIC



SCHEMATIC



ELECTRICAL SPECIFICATIONS -
 PRIMARY - 115 V 60 ~
 SECONDARY - 6.3 V 1.2 A.
 INSULATION TEST VOLTS RMS - 2500
 TERMINALS - SOLDER TYPE, INSULATED.

MECHANICAL SPECIFICATIONS -
 CASE - STEEL, HERMETICALLY SEALED.

COLOR - T.M.C. GRAY (S-115) EXCEPT INSERT END.
 METAL STAMP TERMINAL END AS ABOVE.

NOTE: MANUFACTURED IN ACCORDANCE WITH MIL SPEC T-27-A EXCEPT THAT MIL SPEC T-27-A SHALL NOT APPEAR ON CASE AND QUALIFICATION TESTING IS NOT REQUIRED.

ISSUE	ITEM	CHANGED FROM	DATE	CH. NO.	DRAFTS	CHECKER	ENG. APP.
E	1	NOTE ADDED (MIL T-27-A)	6-28-60	2572			
D	1	can Tol. Added	3/11/57	4			
C	1	REDRAWN	1/20/56	3			

TOLERANCES		SCALE:
DEC. DIM. ±	A	MAXIMUM ALLOWABLE TOLERANCES HAVE BEEN DETERMINED AND ANY DEVIATIONS WILL BE CAUSE FOR REJECTION. REMOVE ALL BURRS AND SHARP EDGES
FRAC. DIM. ±		
ANGULAR DIM. ±		

1	XFK	A-680	11-23-56
REQ. PER UNIT	MODEL	PROJECT NO.	ASS'Y. NO.
USED ON			

REQ. ITEM	PART NO.	DESCRIPTION	SYMBOL
		THE TECHNICAL MATERIEL CORP. MAMARONECK, NEW YORK	
STOCK SIZE		TRANSFORMER, FILAMENT	
MATERIAL			
TYPE & TEMPER	HEAT TREAT. SPEC.	DRAWN	CHECKED
FINISH & SPEC. NO.		ELEC. DES. APP.	MECH. DES. APP.