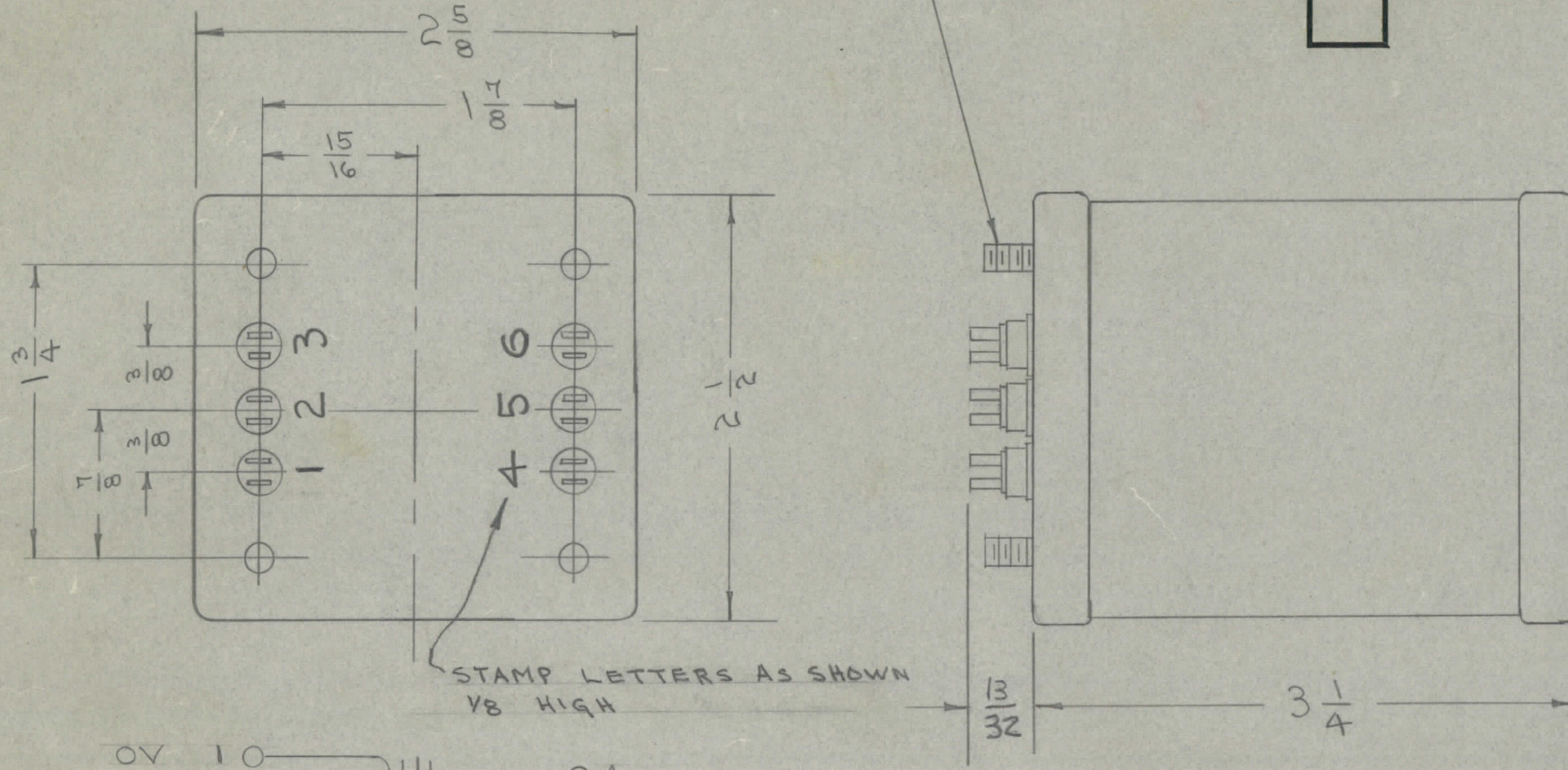


IF IT IS FOUND DESIRABLE TO CHANGE ANY TOLERANCE OR OTHER DETAIL SPECIFIED ON THIS DRAWING NOTIFY THE PURCHASER PROMPTLY.

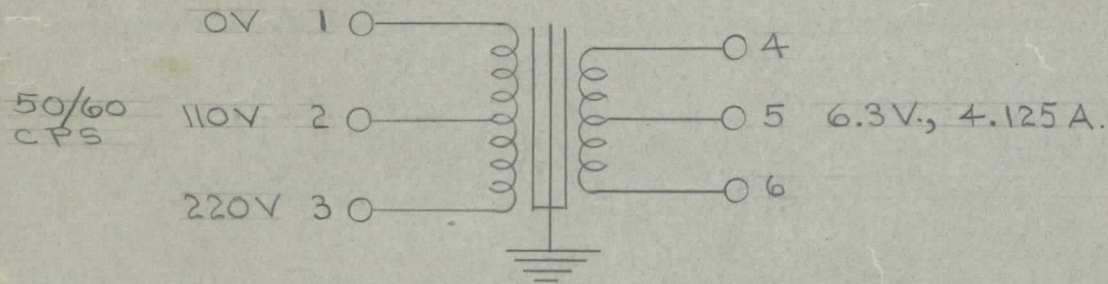
MAXIMUM ALLOWABLE TOLERANCES HAVE BEEN DETERMINED AND DEVIATIONS WILL BE CAUSE FOR REJECTION. REMOVE ALL BURRS AND SHARP EDGES

TF-104 B

6-32 X 3/8 STUDS
4 REQUIRED



STAMP LETTERS AS SHOWN
1/8 HIGH



A. ELECTRICAL SPECIFICATIONS:

PRIMARY: 110/220 Volts 50/60 CPS. INPUT.
SECONDARY: 6.3 Volts, 4.125 AMP. OUTPUT CT.

B. MECHANICAL SPECIFICATIONS:

CASE: HERMETICALLY SEALED IN RECTANGULAR METAL CAN.
FINISH: SMOOTH DARK GRAY ENAMEL, SIMILAR OR EQUAL TO MAAS & WALDSTEIN LOT # 68397, NAVY SPEC. 52 EL, TYPE C, GLOSS 35 to 40 UNITS.
SIZE: 3-1/4 H. x 2-1/2 x 2-5/8 (OLYMPIC # 4 BOX) PLUS TERMS.
MOUNTING: FOUR 6-32 x 3/8 THREADED STUDS LOCATED ON CORNERS OF TERMINAL END, 1-7/8 MOUNTING CENTERS ON 2-5/8 END; 1-3/4 MOUNTING CENTERS ON 2-1/2 END.
TERMINALS: SOLDER TYPE TERMINALS ON MOUNTING END, IN LINE WITH THE MOUNTING INSERTS.
LETTERING: SCHEMATIC DIAGRAM, TMC PART NUMBER (TF-104), MFRS. NAME AND PART NUMBER SHALL APPEAR ON END OPPOSITE TERMINALS.

C. SPECIFICATION:

~~THE ENTIRE UNIT TO BE MANUFACTURED IN ACCORDANCE WITH MIL-T-27.~~

NOTE: MANUFACTURED IN ACCORDANCE WITH MIL SPEC T-27-A EXCEPT THAT MIL SPEC T-27-A SHALL NOT APPEAR ON CASE AND QUALIFICATION TESTING IS NOT REQUIRED.

DIMENSIONS FOR REFERENCE ONLY

B	1	13/32 WAS 15/32	9/24/53	10037	ADD	JWS	1/16
A	1	NOTE ADDED (MIL T-27-A)	6-30-60	2572	ADD	JWS	1/16
		REDRAWN - NO CHANGE	5/1/53		ADD	JWS	1/16
ISSUE	ITEM	CHANGED FROM	DATE	CN. NO.	DRAFTS	CHECKER	ENG. APP.
TOLERANCES			SCALE: FULL				
ALL OTHERS	DEC. DIM. ± FRAC. DIM. ± ANGULAR DIM. ±	DRILL, PUNCH, COMMERCIAL STOCK SIZES AND MANUFACTURERS TOLERANCES ARE NOT INCLUDED.					

DVM			15-5-58
CFA	136		7-31-52
			7-31-52
MODEL	PROJECT NO.	ASS'Y. NO.	DATE
USED ON			

REQ.	ITEM	PART NO.	DESCRIPTION	SYMBOL
		#	THE TECHNICAL MATERIEL CORP. MAMARONECK, NEW YORK	
		STOCK SIZE		
		#	TRANSFORMER, FILAMENT	
		MATERIAL		
		WEIGHT PER PC.		
		#	C.D.D. 5/1/53	
		TYPE & TEMPER		
		#	DRAWN	ELEC. DES. APP.
		HEAT TREAT. SPEC.		MECH. DES. APP.
		#	CHECKED	FINAL APPROVAL
		FINISH & SPEC. NO.		
			TF-104	B