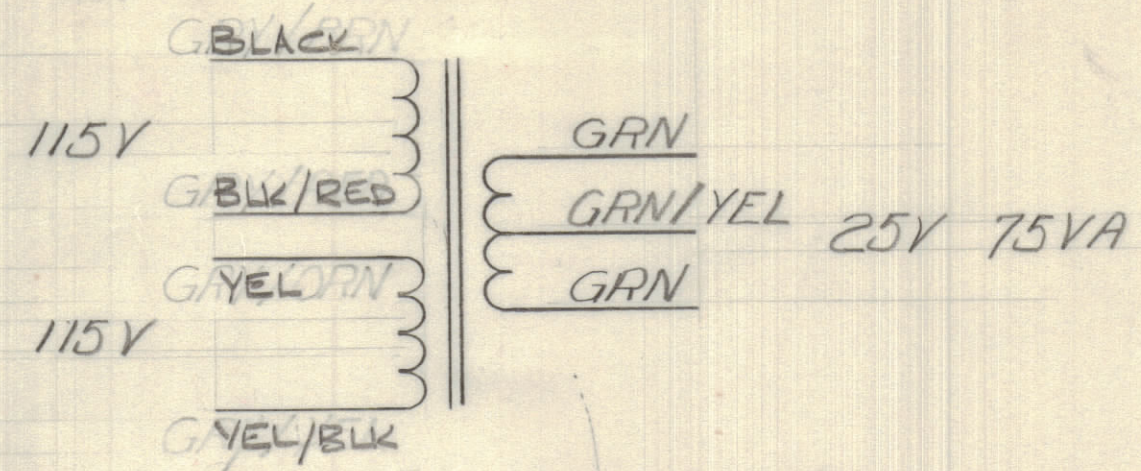


IF IT IS FOUND DESIRABLE TO CHANGE ANY TOLERANCE OR OTHER DETAIL SPECIFIED ON THIS DRAWING NOTIFY THE PURCHASER PROMPTLY.				DIMENSIONS IN INCHES UNLESS OTHERWISE SPECIFIED			
MAXIMUM ALLOWABLE TOLERANCES HAVE BEEN DETERMINED AND DEVIATIONS WILL BE CAUSE FOR REJECTION. REMOVE ALL BURRS AND SHARP EDGES.							
ISSUE	ITEM	CHANGED FROM	DATE	CH. NO.	DRAFTS	CHECKER	ENG. APP.
Ø		PROD RELEASE	23 MAY 70		RW		
A		REV AS PER CEMN	12 JUN 70	862	RW		
B		REV PER CEMN	30 JUN 1970	809	RW		

REQ.	ITEM	PART NO.	DESCRIPTION	SYMBOL
------	------	----------	-------------	--------



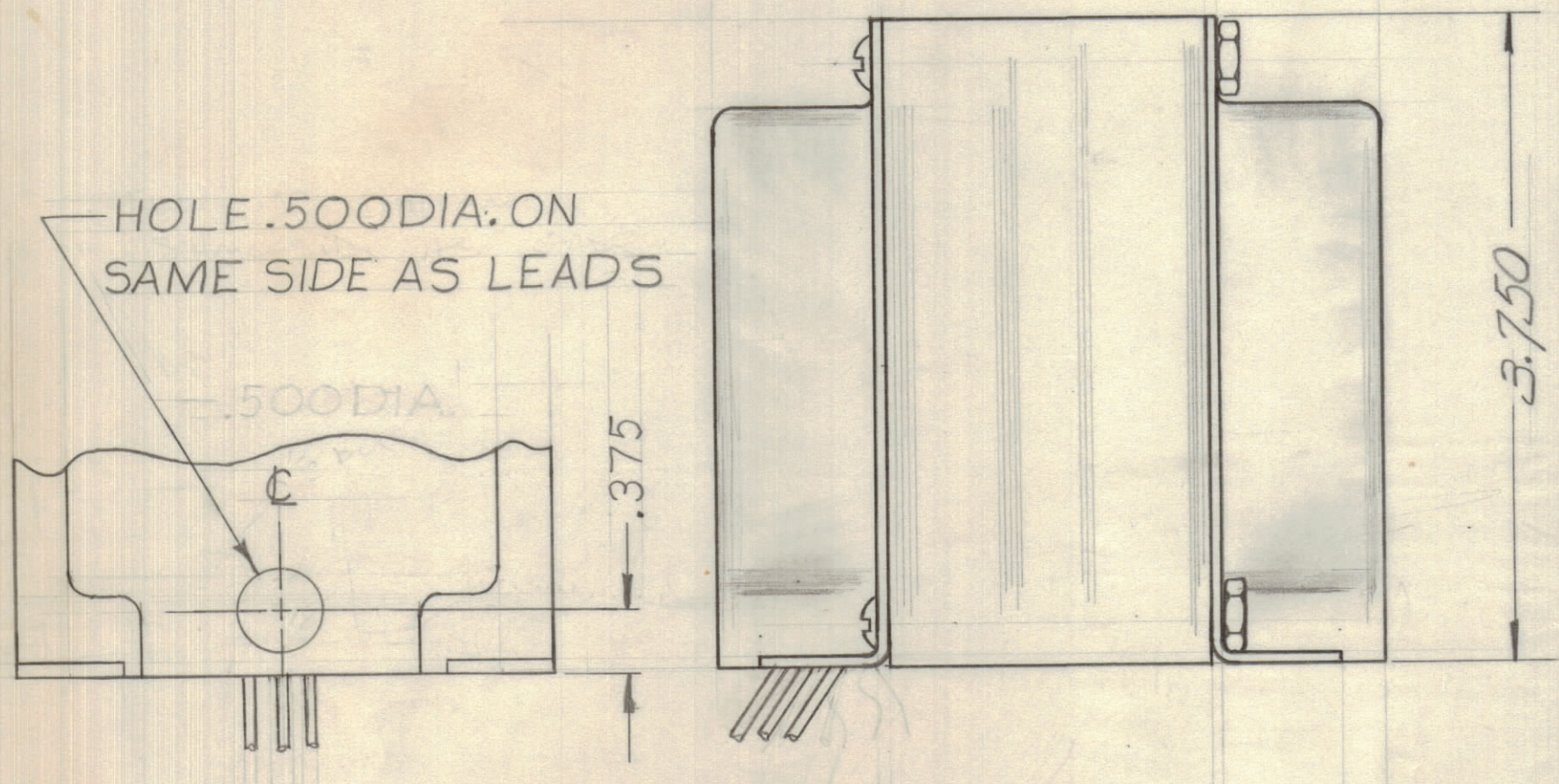
ELECTRICAL SPECIFICATIONS

PRIMARY (1) (BLACK - BLK/RED) - 115 VRMS, 48/62 HZ
 PRIMARY (2) (YELLOW - YEL/BLK) - 115 VRMS, 48/62 HZ
 SECONDARY - 25V
 DUTY CYCLE - CONTINUOUS

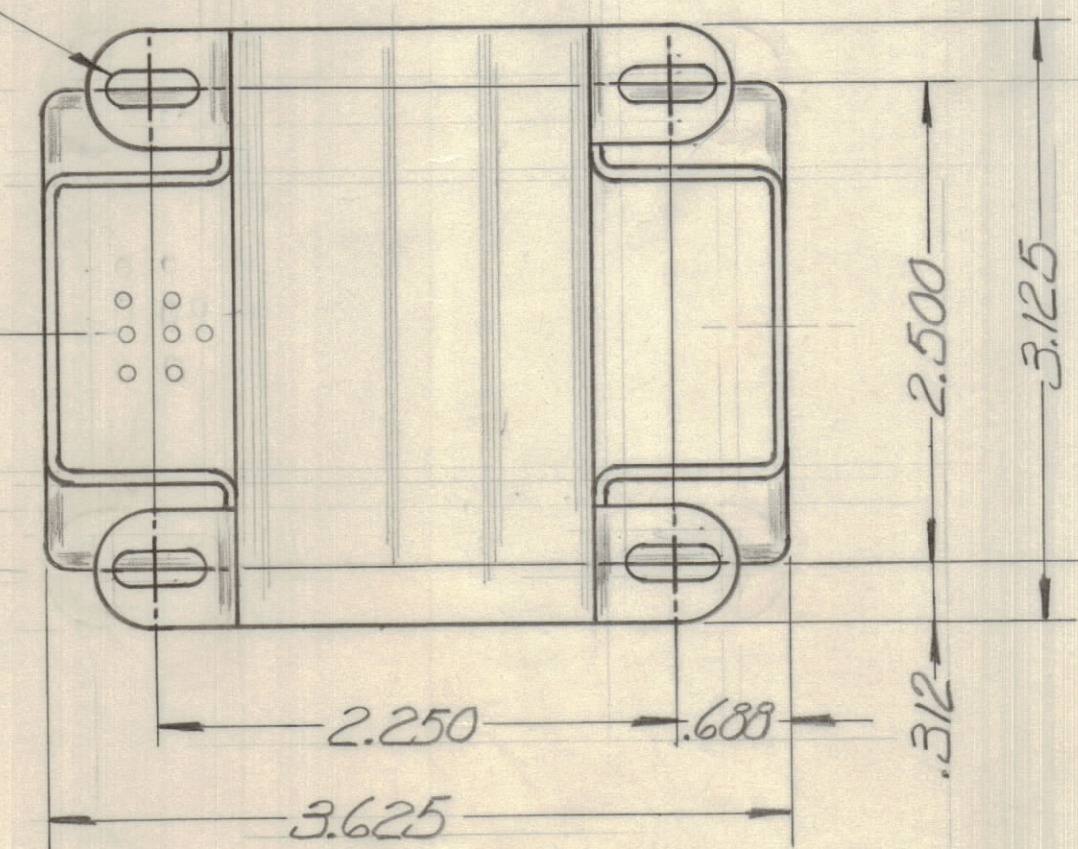
TF10056 B

MECHANICAL SPECIFICATIONS

LEAD LENGTH - 6.000 TO 8.000
 CASE TYPE 'X', DIMENSIONS AS SHOWN



.500X.188 OBROUND TYP



HOLE .500 DIA. ON SAME SIDE AS LEADS
 NOTE

TOLERANCES		SCALE: NTS
ALL	DEC. DIM. ± .062	DRILL, PUNCH, COMMERCIAL STOCK SIZES AND MANUFACTURERS TOLERANCES ARE NOT INCLUDED.
OTHERS	FRAC. DIM. ± 1/64	
	ANGULAR DIM. ± 0° 30'	

MTR100A	087-70	28 MAY 70
MODEL	PROJECT NO.	DATE

S401-158		TMC (Canada) LIMITED OTTAWA ONTARIO	
STOCK SIZE		TRANSFORMER- LOW VOLTAGE	
MATERIAL		PULLERMS	
WEIGHT PER PC.		DRAWN	
TYPE & TEMPER		ELEC. DES. APP.	
HEAT TREAT. SPEC.		MECH. DES. APP.	
FINISH & SPEC. NO.		CHECKED	
		FINAL APPROVAL	
		TF10056 B	