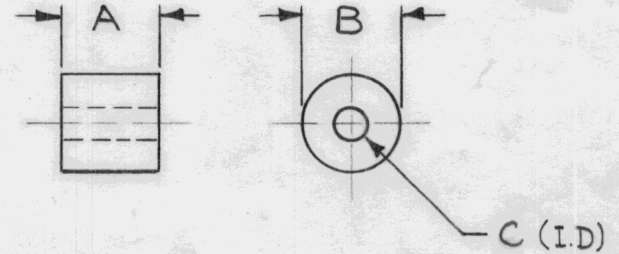


STANDARD DRAWING

REQ. PER. UNIT 3 RE	USED ON		TE-176	C
	MODEL	ASS'Y. NO.		
	GPT-10K	AX-130	4-27-61	

TMC PART #	"A"	"B"	"C" (I.D)
TE-176-1	1/2	1/2	11/64
TE-176-2	11/16	1/2	5/16
TE-176-3	7/16	.430	.196
TE-176-4	3/8	3/8	11/64
TE-176-5	1"	3/8	11/64



ISSUE	ITEM	CHANGED FROM	DATE	CH. NO.	DRAFTS	CHECKER	ENG. APP.	REQ. ITEM	PART NO.	DESCRIPTION	SYMBOL					
C		TE-176-4 & 5, ADDED	8/27/65	14719	HVV	JCB	JC	SEE CHART		THE TECHNICAL MATERIEL CORP. MAMARONECK, NEW YORK STANDOFF, SILICONE GLASS	C					
B	1	ADDED TE-176-3	3-9-64	10993	AM	JCB	JCB	STOCK SIZE								
A	2	STANDARD MADE MAT. WAS POLYSTYRENE	4/27/61	4803	WF	JCB		SILICONE GLASS								
								MATERIAL								
TOLERANCES			SCALE: FULL (DO NOT SCALE)					G-7								
DEC. DIM. ±			MAXIMUM ALLOWABLE TOLERANCES HAVE BEEN DETERMINED AND ANY DEVIATIONS WILL BE CAUSE FOR REJECTION. REMOVE ALL BURRS AND SHARP EDGES					TYPE & TEMPER		HEAT TREAT. SPEC.	DRAWN	CHECKED	FINAL APPROVAL			
FRAC. DIM. ± 1/64																TE-176
ANGULAR DIM. ±																
								FINISH & SPEC. NO.		ELEC. DES. APP	MECH. DES. APP					