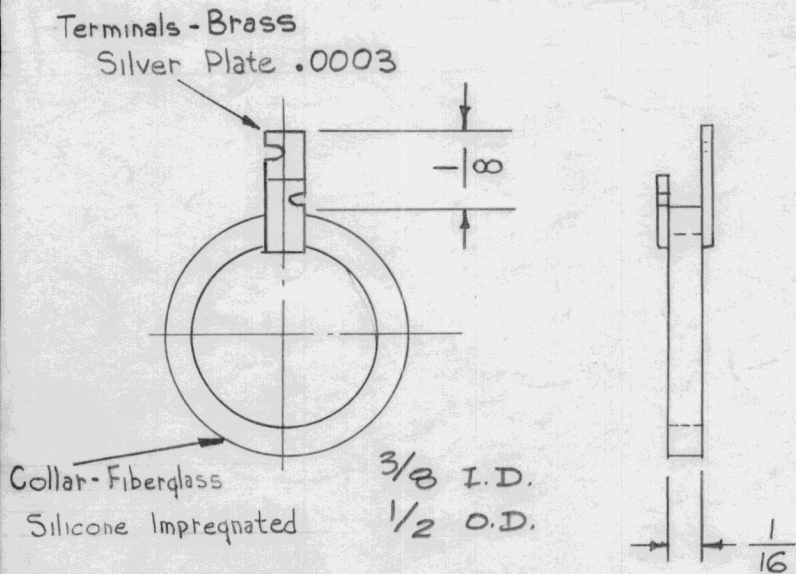


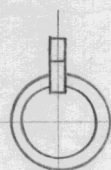
STANDARD DRAWING

REQ. PER UNIT	USED ON			TE 170	B
	MODEL	ASS'Y. NO.	DATE		
			7-31-57		

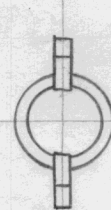


DIMENSIONS FOR REF. ONLY

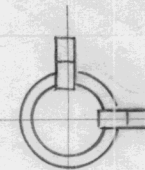
NOTE: PURCHASE TE170-4 & -5 ONLY
MODIFY TE170-4 AS REQUIRED.



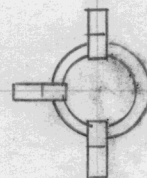
TE 170-1
MFR. NO.
X1565-1



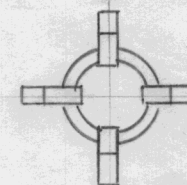
TE 170-2
MFR. NO.
X1565-2



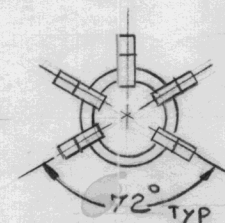
TE 170-2A
(Angle)
MFR. NO.
X1565-2A



TE 170-3
MFR. NO.
X1565-3



TE 170-4
MFR. NO.
X1565-4



TE 170-5
MFR. NO.
X1565-5

ISSUE	ITEM	CHANGED FROM	DATE	CH. NO.	DRAFTS	CHECKER	ENG. APP.	REQ. ITEM	PART NO.	DESCRIPTION	SYMBOL		
B		ADDED PURCH. NOTE, DELE CAMB. THERM. TOS 401-167	7-21-66	16591	RME	<i>[Signature]</i>	<i>[Signature]</i>			THE TECHNICAL MATERIEL CORP. MAMARONECK, NEW YORK TERMINAL, COLLAR	B		
A	2	Collar & Terminal Notes Added	3-24-62	6511	LL	<i>[Signature]</i>	<i>[Signature]</i>						
	1	TE-170-5 ADDED											
TOLERANCES			SCALE: S401-167 (X1565)					DRAWN		CHECKED		FINAL APPROVAL	
DEC. DIM. ± FRAC. DIM. ± ANGULAR DIM. ±			MAXIMUM ALLOWABLE TOLERANCES HAVE BEEN DETERMINED AND ANY DEVIATIONS WILL BE CAUSE FOR REJECTION. REMOVE ALL BURRS AND SHARP EDGES					TYPE & TEMPER		HEAT TREAT. SPEC.		ELEC. DES. APP.	
								FINISH & SPEC. NO.		MECH. DES. APP.		TE 170	
												B	