

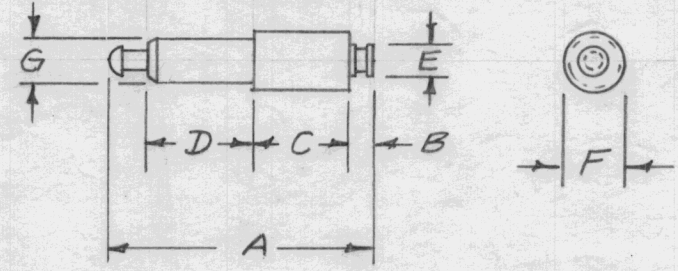
STANDARD DRAWING

REQ. PER UNIT	USED ON			TE-169	A
	MODEL	ASS'Y. NO.	DATE		

TMC NO.	MFG. PART NO.	VOLTAGE RATING	ACTUAL VOLTAGE FLASH-OVER	CAP. mmf	DIMENSIONS							MTG. HOLE DEBURR ONE EDGE
					A	B	C	D	E	F	G	
TE-169-1	FT-1000	2000	6000	1.0	.740	1/8	.187	.212	3/32	3/16	.171	.158
TE-169-2	FT-1100	2000	6000	1.0	.740	1/8	.250	.150	3/32	3/16	.171	.158
TE-169-3	FT-1500	2500	7000	1.2	.865	1/8	.250	.275	3/32	3/16	.171	.158
TE-169-4	FT-2000	3500	9000	1.2	1.115	1/8	.375	.400	1/8	3/16	.171	.158
TE-169-5	FT-2500	4500	11000	2.0	1.365	1/8	.500	.525	1/8	1/4	.217	.204
TE-169-6	FT-4000	5500	13000	2.0	1.965	1/8	.800	.825	1/8	1/4	.217	.204

NOTES:

1. Solder Terminal - Brass, Silver Plate
2. "G" Diam. of teflon held to $\pm .002 - .000$
3. MOUNTING HOLE must be the "G" Diam. minus $.013 \pm .002$ (Deburr one edge of hole)
4. Minimum protrusion of bushing thru chassis - $.025$



REF: SEAELECTRO CORP

REQ.	ITEM	PART NO.	DESCRIPTION				SYMBOL
			THE TECHNICAL MATERIEL CORP. MAMARONECK, NEW YORK				
			STOCK SIZE				
			TEFLON				
			MATERIAL				
			FEED-THRU, TEFLON, PRESS FIT				
A	1	MTG. HOLE COL. ADD. TO CHART	1-12-65	13272	22	@	JH
ISSUE ITEM CHANGED FROM			DATE	CH. NO.	DRAFTS	CHECKER	ENG. APP.
TOLERANCES			SCALE:				
DEC. DIM. \pm			MAXIMUM ALLOWABLE TOLERANCES HAVE BEEN DETERMINED AND ANY DEVIATIONS WILL BE CAUSE FOR REJECTION. REMOVE ALL BURRS AND SHARP EDGES				
FRAC. DIM. \pm							
ANGULAR DIM. \pm							
TYPE & TEMPER			HEAT TREAT. SPEC.		DRAWN		CHECKED
FINISH & SPEC. NO.			ELEC. DES. APP.		MECH. DES. APP.		
					16		JH
					DB		TE-169
							A