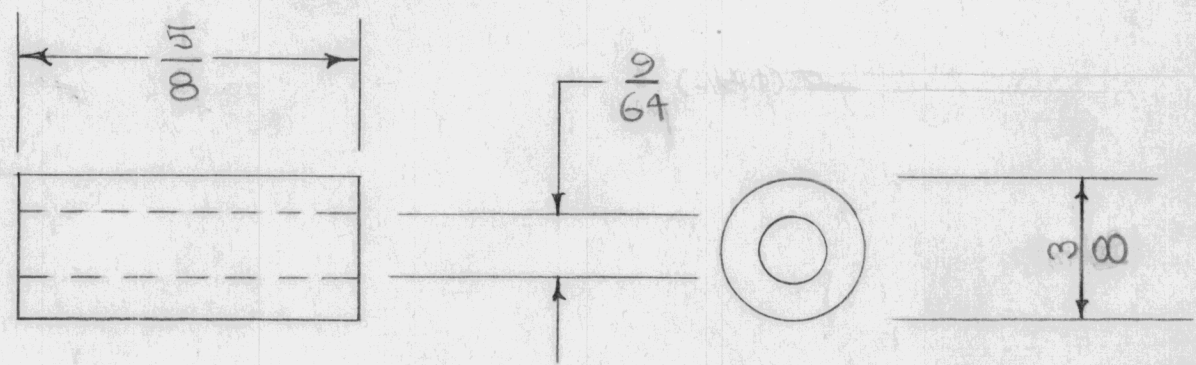


IF IT IS FOUND DESIRABLE TO CHANGE ANY TOLERANCE OR OTHER DETAIL SPECIFIED ON THIS DRAWING NOTIFY THE PURCHASER PROMPTLY.

TE-150 B

MAXIMUM ALLOWABLE TOLERANCES HAVE BEEN DETERMINED AND DEVIATIONS WILL BE CAUSE FOR REJECTION. REMOVE ALL BURRS AND SHARP EDGES

REQ. PER UNIT	USED ON			
	MODEL	PROJECT NO.	ASS'Y. NO.	DATE
A	GPR	297		3-28-55



REF: H. H. SMITH CO. SPECIAL.

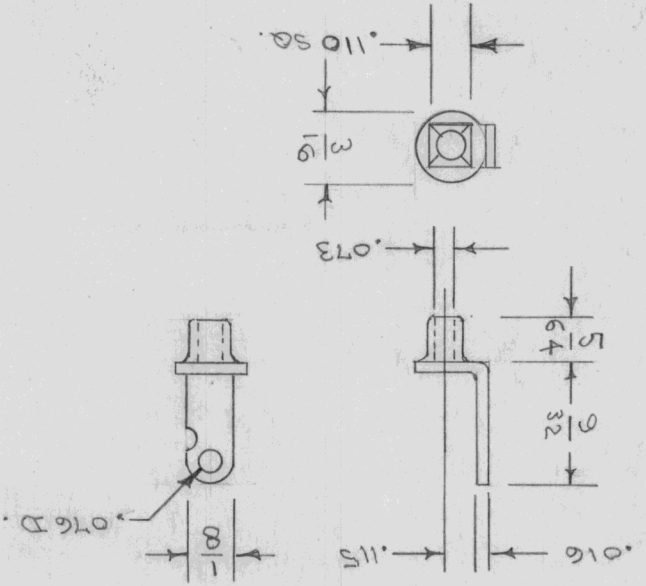
REQ.	ITEM	PART NO.	DESCRIPTION	SYMBOL
	1	3/8 ROD.	THE TECHNICAL MATERIEL CORP.	
		STOCK SIZE	MAMARONECK. NEW YORK	
		BRASS	F. SPACER, CONDENSER	
		MATERIAL	WEIGHT PER PC.	
		TYPE & TEMPER	CDD. 3-28-55	###
		HEAT TREAT. SPEC.	DRAWN	ELEC. DES. APP. MECH. DES. APP.
		FINISH & SPEC. NO.	CHECKED	FINAL APPROVAL
			G.T.O	
			TE-150	B

ISSUE	ITEM	CHANGED FROM	DATE	CN. NO.	DRAFTS	CHECKER	ENG. APP.
B	1	5/8 WAS 7/8	7/19/55	Y	CDD	JAW	WJC
A	1	9/64 WAS 11/64	6/17/55	1	CDD	###	WJC

TOLERANCES		SCALE
ALL OTHERS	DEC. DIM. ± FRAC. DIM. ± 1/64 ANGULAR DIM. ±	DRILL, PUNCH, COMMERCIAL STOCK SIZES AND MANUFACTURERS TOLERANCES ARE NOT INCLUDED.

ALL OTHERS		DEC. DIM. $\pm$			FRAC. DIM. $\pm$			ANGULAR DIM. $\pm$		
TOLERANCES		CHANGED FROM			SCALE			TOLERANCES ARE NOT INCLUDED.		
DRILL, PUNCH, COMMERCIAL STOCK	SIZES AND MANUFACTURERS	FINISH & SPEC. NO.								
HEAT TREAT. SPEC.	HOT TINNED	FINISH & SPEC. NO.								
TYPE & TEMPER	CDP. 6-9-55	DRAWN		ELEC. DES. APP.		MECH. DES. APP.		CHECKED		
MATERIAL		MATERIAL		WEIGHT PER PC.		STOCK SIZE		MATERIAL		
BRASS						STOCK SIZE		TERMINAL LUG		
REQ. ITEM		PART NO.		DESCRIPTION		SYMBOL		THE TECHNICAL MATERIEL CORP. MAMARONECK, NEW YORK		
DATE		CN. NO.		DRAFTS CHECKER		ENG. APP.		G.T.O.		
CHANGED FROM		SCALE		FINAL APPROVAL			TE-151			

REF. FOR REF. ONLY REF: ZIERICK MFG. CO. CAT. NO. 202



IF IT IS FOUND DESIRABLE TO CHANGE ANY TOLERANCE OR OTHER DETAIL SPECIFIED ON THIS DRAWING NOTIFY THE PURCHASER PROMPTLY.

MAXIMUM ALLOWABLE TOLERANCES HAVE BEEN DETERMINED AND DEVIATIONS WILL BE CAUSE FOR REJECTION. REMOVE ALL BURRS AND SHARP EDGES

STANDARD DRAWING

REQ. PER UNIT	MODEL	PROJECT NO.	ASSY. NO.	DATE
USED ON	TE-151			

IF IT IS FOUND DESIRABLE TO CHANGE ANY TOLERANCE OR OTHER DETAIL SPECIFIED ON THIS DRAWING NOTIFY THE PURCHASER PROMPTLY.

MAXIMUM ALLOWABLE TOLERANCES HAVE BEEN DETERMINED AND DEVIATIONS WILL BE CAUSE FOR REJECTION. REMOVE ALL BURRS AND SHARP EDGES

**STANDARD DRAWING**

REQ. PER UNIT

MODEL

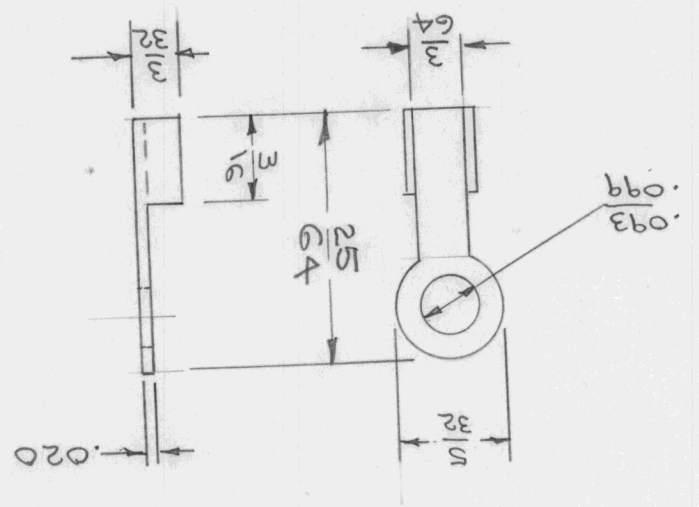
PROJECT NO.

ASS'Y. NO.

DATE

USED ON

TE-152



REF: PATTON-MAC GUYER CO. # 526

SYMBOL

DESCRIPTION

THE TECHNICAL MATERIEL CORP.  
MAMARONECK NEW YORK

TERMINAL

REQ. ITEM PART NO.

STOCK SIZE

MATERIAL WEIGHT PER PC.

TYPE & TEMPER

DRAWN

ELEC. DES. APP.

MECH. DES. APP.

CHECKED

FINAL APPROVAL

HEAT TREAT. SPEC.

ELECTRO-TINNED

FINISH & SPEC. NO.

ISSUE ITEM

CHANGED FROM

DATE

CN. NO.

DRAFTS

CHECKER

ENG. APP.

SCALE

TOLERANCES

DRILL, PUNCH, COMMERCIAL STOCK SIZES AND MANUFACTURERS TOLERANCES ARE NOT INCLUDED.

ALL OTHERS

DEC. DIM.  $\pm$   
FRAC. DIM.  $\pm$   
ANGULAR DIM.  $\pm$

TE-15

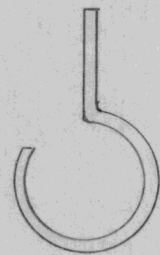


TMC NO.	FOR COIL FORM WITH O.D. OF	CAMBRIDGE PART NO
TE-153-1	1/4 OR 5/16	X-1684-1
-2	3/8	X-1640-1
-3	1/2	X-1682-1

REQ. PER UNIT	USED ON		
	MODEL	ASS'Y. NO.	DATE
			TE-153

B

# STANDARD DRAWING



### NOTICE TO PERSONS RECEIVING THIS DRAWING

THE TECHNICAL MATERIEL CORPORATION claims proprietary right in the material disclosed hereon. This drawing is issued in confidence for engineering information only and may not be reproduced or used to manufacture anything shown hereon without permission from THE TECHNICAL MATERIEL CORPORATION to the user. This drawing is loaned for mutual assistance and is subject to recall at any time.

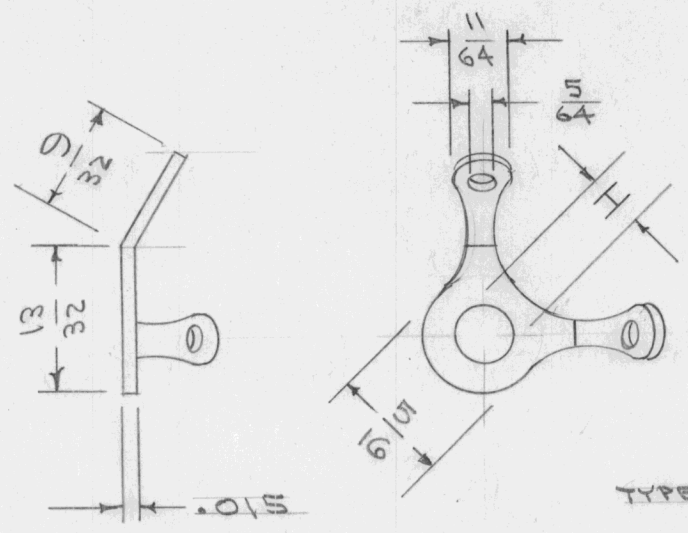
Property of:  
THE TECHNICAL MATERIEL CORPORATION  
MAMARONECK, NEW YORK

REF: CAMBRIDGE THERMIONIC CORP. RING TERMINAL

ISSUE	ITEM	CHANGED FROM	DATE	CH. NO.	DRAFTS	CHECKER	ENG. APP.	REQ. ITEM	PART NO.	DESCRIPTION	SYMBOL				
										<b>THE TECHNICAL MATERIEL CORP.</b> <b>MAMARONECK, NEW YORK</b> <b>TERMINAL, RING TYPE</b>					
B	2	ON TE-153-2 MFG. PART # WAS X-1895-4	5-29-61	4976	WGF	JCS									
	1	ON TE-153-1 MFG. PART # WAS X-1591-3													
A	1	MFG. PART # ADDED	8/15/58	1											
TOLERANCES			SCALE:					MATERIAL		DRAWN					
DEC. DIM. ±			MAXIMUM ALLOWABLE TOLERANCES HAVE BEEN DETERMINED AND ANY DEVIATIONS WILL BE CAUSE FOR REJECTION. REMOVE ALL BURRS AND SHARP EDGES					TYPE & TEMPER		HEAT TREAT. SPEC.		DRAWN			
FRAC. DIM. ±								FINISH & SPEC. NO.		ELEC. DES. APP.		MECH. DES. APP.		CHECKED	
ANGULAR DIM. ±														FINAL APPROVAL	
										CDD 11/30/58 AJJ					
										WJ TE-153		B			



REQ. PER UNIT	USED ON			TE-154
	MODEL	ASS'Y. NO.	DATE	



TYPE DESIGNATION TO BE IN FOLLOWING FORM

TE-154-.169

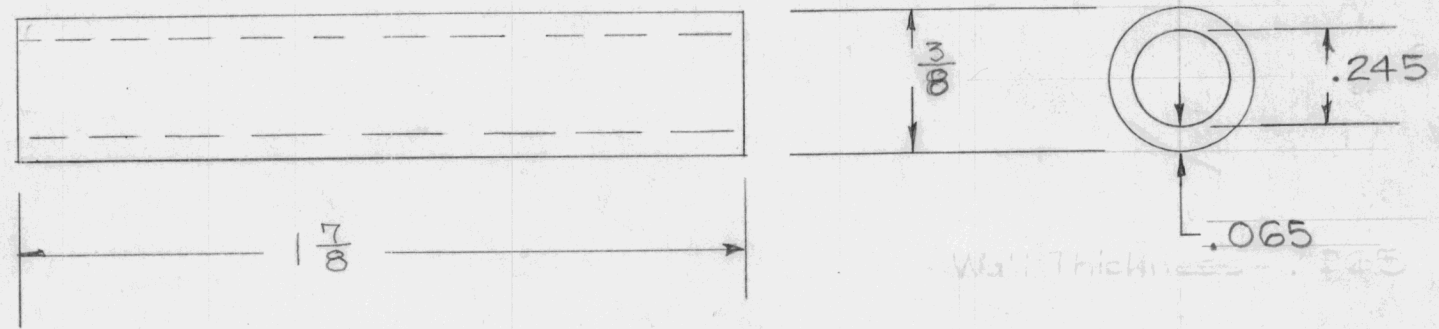
TYPE NUMBER H  
(HOLE SIZE)

HOLE SIZES AVAILABLE .169 & .196, .130, .144

REF.: ZIERICK MFG CORP. CAT. NO. 122

								REQ. ITEM	PART NO.	DESCRIPTION	SYMBOL	
										<b>THE TECHNICAL MATERIEL CORP.</b> MAMARONECK, NEW YORK TERMINAL LUG, DUAL		
								STOCK SIZE				
								MATERIAL				
ISSUE	ITEM	CHANGED FROM	DATE	CH. NO.	DRAFTS	CHECKER	ENG. APP.			CDD 9/30/55 JADe [Signature]		
TOLERANCES			SCALE:							DRAWN	CHECKED	FINAL APPROVAL
DEC. DIM. ±			MAXIMUM ALLOWABLE TOLERANCES HAVE BEEN DETERMINED AND ANY DEVIATIONS WILL BE CAUSE FOR REJECTION. REMOVE ALL BURRS AND SHARP EDGES					TYPE & TEMPER		HEAT TREAT. SPEC.		
FRAC. DIM. ±								FINISH & SPEC. NO.		ELEC. DES. APP.		MECH. DES. APP.
ANGULAR DIM. ±												

REQ. PER UNIT	USED ON			TE-157	B
	MODEL	ASS'Y. NO.	DATE		
3	CAB/FR		2/16/56		
3	CAB-7				



ISSUE	ITEM	CHANGED FROM	DATE	CH. NO.	DRAFTS	CHECKER	ENG. APP.	REQ. ITEM	PART NO.	DESCRIPTION	SYMBOL	
								3/8 OD x .245 ID		THE TECHNICAL MATERIEL CORP. MAMARONECK. NEW YORK		
								STOCK SIZE				
B	1	FINISH WAS S101 & S107	8.26.64	12174	WB	JCB		ALUM.		SPACER		
A	2	I.D. .245 WAS .218	7.19.57	1	sc.	Hilde						
	1	6061-T6 WAS 17S-T4								Cab/FR.	GPT-750	
TOLERANCES			SCALE:					6061-T6				
DEC. DIM. ±			MAXIMUM ALLOWABLE TOLERANCES HAVE BEEN DETERMINED AND ANY DEVIATIONS WILL BE CAUSE FOR REJECTION. REMOVE ALL BURRS AND SHARP EDGES					TYPE & TEMPER	HEAT TREAT. SPEC.	DRAWN	CHECKED	FINAL APPROVAL
FRAC. DIM. ±								S404 YELL. IRIDITE				
ANGULAR DIM. ±								FINISH & SPEC. NO.	ELEC. DES. APP.	MECH. DES. APP.	TE-157	B

IF IT IS FOUND DESIRABLE TO CHANGE ANY TOLERANCE OR OTHER DETAIL SPECIFIED ON THIS DRAWING NOTIFY THE PURCHASER PROMPTLY.

TE-160

MAXIMUM ALLOWABLE TOLERANCES HAVE BEEN DETERMINED AND DEVIATIONS WILL BE CAUSE FOR REJECTION. REMOVE ALL BURRS AND SHARP EDGES

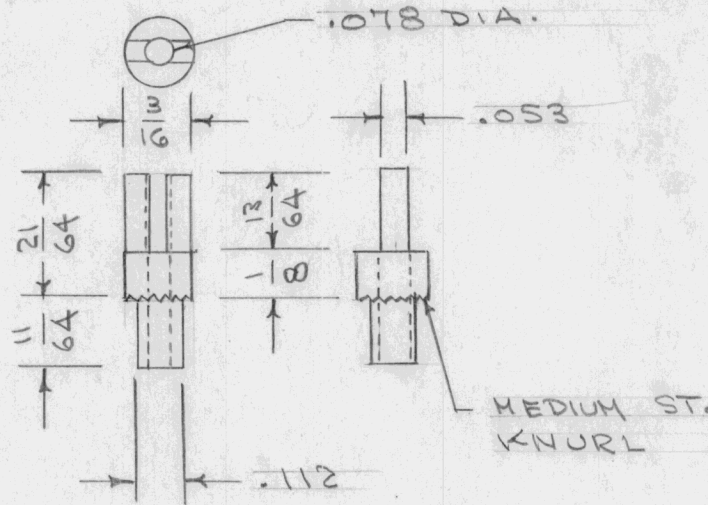
USED ON

MODEL

PROJECT NO.

ASS'Y. NO.

DATE



FOR 1/8" MTG. BOARD.

REF. CITATION PRO. CO. CAT. # 16 D

REQ.	ITEM	PART NO.	DESCRIPTION	SYMBOL
			<b>THE TECHNICAL MATERIEL CORP.</b>	
			MAMARONECK. NEW YORK	
STOCK SIZE			LUG, SOLDER	
MATERIAL			TURRET TYPE	
WEIGHT PER PC.			CDD 7/18/56	
TYPE & TEMPER			DRAWN <i>WJC</i>	
			ELEC. DES. APP. MECH. DES. APP.	
HEAT TREAT. SPEC.			CHECKED <i>WJC</i> FINAL APPROVAL <i>WJC</i>	
FINISH & SPEC. NO.			HOT TIN DIPPED	
			TE-160	

ISSUE ITEM CHANGED FROM DATE CN. NO. DRAFTS CHECKER ENG. APP.

TOLERANCES

SCALE

ALL OTHERS  
 DEC. DIM. ±  
 FRAC. DIM. ±  
 ANGULAR DIM. ±

DRILL, PUNCH, COMMERCIAL STOCK SIZES AND MANUFACTURERS TOLERANCES ARE NOT INCLUDED.



IF IT IS FOUND DESIRABLE TO CHANGE ANY TOLERANCE OR OTHER DETAIL SPECIFIED ON THIS DRAWING NOTIFY THE PURCHASER PROMPTLY.

TE-161

MAXIMUM ALLOWABLE TOLERANCES HAVE BEEN DETERMINED AND DEVIATIONS WILL BE CAUSE FOR REJECTION. REMOVE ALL BURRS AND SHARP EDGES

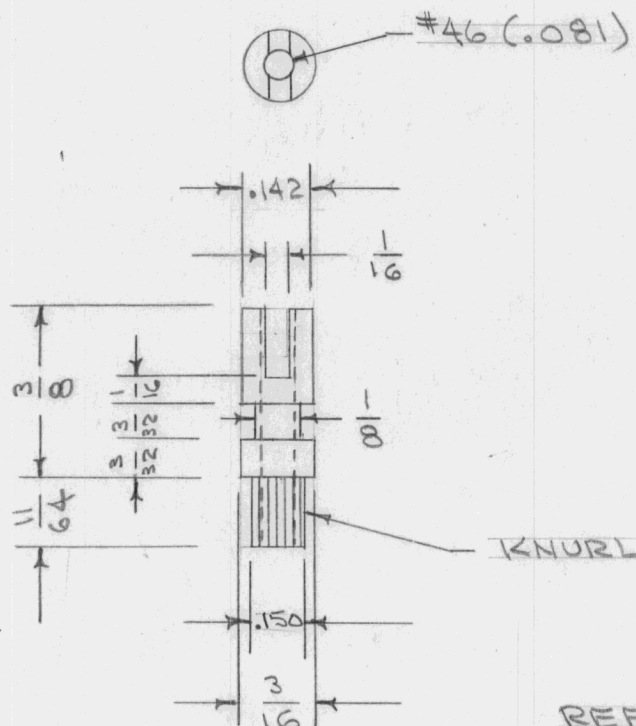
USED ON

MODEL

PROJECT NO.

ASS'Y. NO.

DATE



FOR - 1/8" MTG. BOARD

REF: CITATION PRO. CO. CAT. # 28 D.

REQ.	ITEM	PART NO.	DESCRIPTION	SYMBOL
			<b>THE TECHNICAL MATERIEL CORP.</b>	
			MAMARONECK. NEW YORK	
STOCK SIZE				
BRASS			LUG, SOLDER	
MATERIAL		WEIGHT PER PC.	TURRET TYPE	
TYPE & TEMPER			ADD 7/19/56	<i>[Signature]</i>
			DRAWN	ELEC. DES. APP. MECH. DES. APP.
HEAT TREAT. SPEC.			FINAL APPROVAL	
HOT TIN DIPPED			<i>[Signature]</i>	
FINISH & SPEC. NO.			TE-161	

ISSUE ITEM CHANGED FROM DATE CN. NO. DRAFTS CHECKER ENG. APP.

TOLERANCES

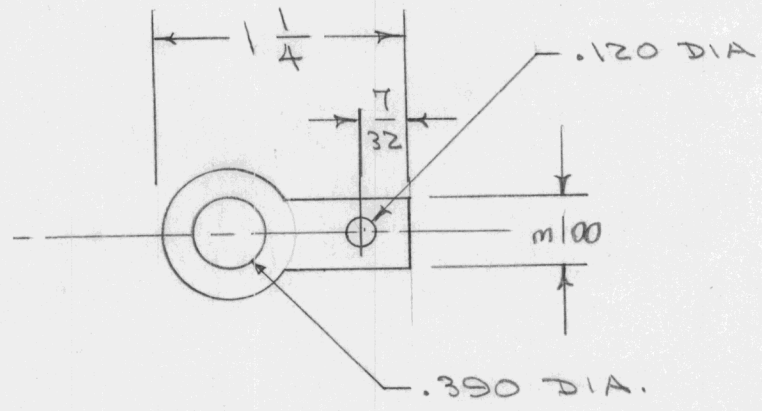
SCALE

ALL OTHERS

DEC. DIM. ±  
FRAC. DIM. ±  
ANGULAR DIM. ±

DRILL, PUNCH, COMMERCIAL STOCK SIZES AND MANUFACTURERS TOLERANCES ARE NOT INCLUDED.

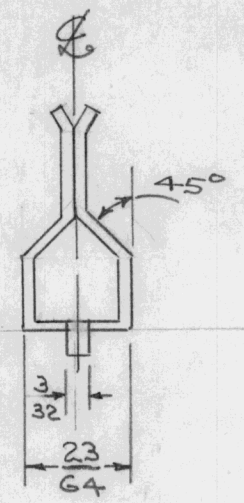
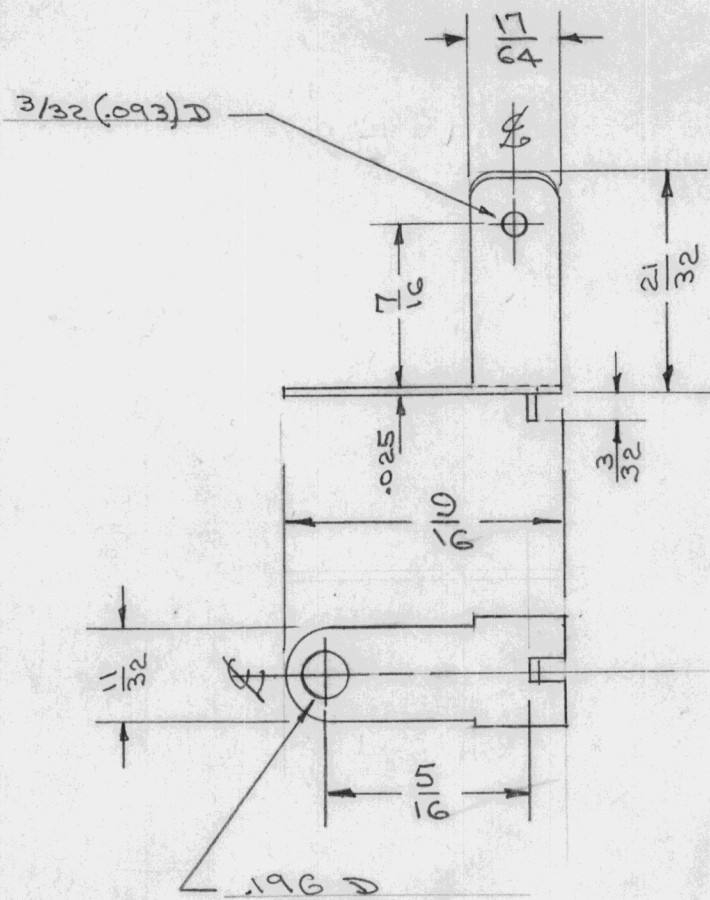
REQ. PER UNIT	USED ON			TE-162
	MODEL	ASS'Y. NO.	DATE	
1	RTF			



REF: ZIERICK MFG. CO. # 331

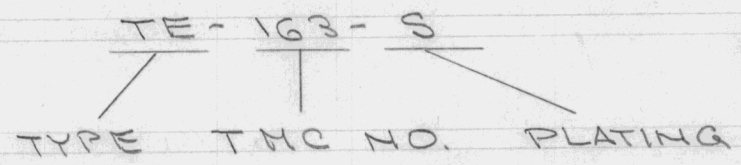
ISSUE	ITEM	CHANGED FROM	DATE	CH. NO.	DRAFTS	CHECKER	ENG. APP.	REQ. ITEM	PART NO.	DESCRIPTION	SYMBOL	
										THE TECHNICAL MATERIEL CORP. MAMARONECK, NEW YORK LUG, SOLDER		
									.020			
									STOCK SIZE			
									BRASS			
									MATERIAL			
										8/23/16 [Signature]	[Signature]	
TOLERANCES			SCALE:					TYPE & TEMPER	HEAT TREAT. SPEC.	DRAWN	CHECKED	FINAL APPROVAL
DEC. DIM. $\pm$ FRAC. DIM. $\pm$ ANGULAR DIM. $\pm$			MAXIMUM ALLOWABLE TOLERANCES HAVE BEEN DETERMINED AND ANY DEVIATIONS WILL BE CAUSE FOR REJECTION. REMOVE ALL BURRS AND SHARP EDGES					HOT TIN DIPPED				TE-162
								FINISH & SPEC. NO.	ELEC. DES. APP.	MECH. DES. APP.		

REQ. PER UNIT 4	USED ON		TE-163
	MODEL RTF	ASS'Y. NO.	



LETTER	TYPE PLATING
N	NICKEL
B	NONE (BRASS)
C	CADMIUM
S	SILVER

TYPE DESIGNATION TO BE IN FOLLOWING FORM



REF: ZIERICK MFG. CORP. # 373

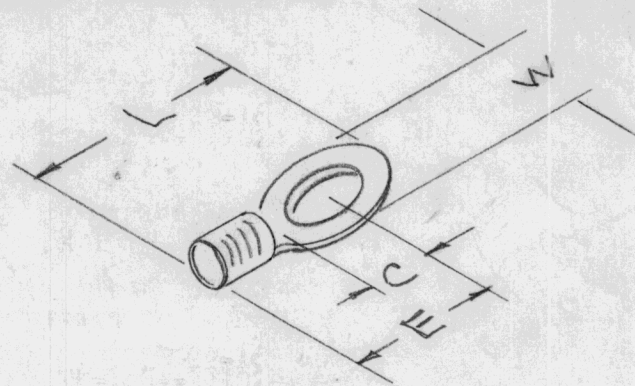
ISSUE	ITEM	CHANGED FROM	DATE	CH. NO.	DRAFTS	CHECKER	ENG. APP.	REQ. ITEM	PART NO.	DESCRIPTION	SYMBOL		
								.025		THE TECHNICAL MATERIEL CORP. MAMARONECK, NEW YORK			
								STOCK SIZE			CLIP, SHORTING		
								BRASS			P/A MODEL RTF		
								MATERIAL					
TOLERANCES								SCALE:		DRAWN <i>JAB</i> CHECKED <i>OOD</i> FINAL APPROVAL <i>WC</i>			
DEC. DIM. ± FRAC. DIM. ± ANGULAR DIM. ±								MAXIMUM ALLOWABLE TOLERANCES HAVE BEEN DETERMINED AND ANY DEVIATIONS WILL BE CAUSE FOR REJECTION. REMOVE ALL BURRS AND SHARP EDGES		TYPE & TEMPER NICKEL PLATE-S-135	HEAT TREAT. SPEC. FINISH & SPEC. NO.	ELEC. DES. APP.	MECH. DES. APP.
												TE-163	



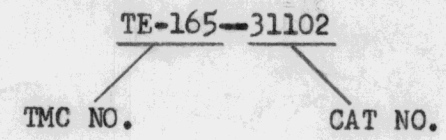
TMC NO	STUD SIZE	E (MAX.)	L (MAX.)	C CLEAR STUD (MIN.)	W TONGUE WIDTH
TE-165-31102	1	29/64	9/16	5/32	7/32
-31103	2	"	"	"	"
-31104	3 or 4	"	"	"	"
-31106	5 or 6	"	"	"	"
-31577	"	17/32	43/64	1/4	9/32
-31531	"	9/16	23/32	9/32	5/16
-31455	8	35/64	45/64	"	"
-30193	"	17/32	43/64	1/4	9/32
-31456	10	9/16	23/32	9/32	5/16
-31471	"	17/32	43/64	1/4	9/32
-31459	12 or 14	23/32	61/64	27/64	15/32
-31460	5/16	"	"	"	"
-31646	3/8	53/64	1 3/32	17/32	17/32

REQ. PER UNIT	USED ON			TE-165
	MODEL	ASSY. NO.	DATE	

# STANDARD DRAWING



Type Designation to be in following form



REF. WIRE SIZES 22-16 (STANDARD-B)

Ref. Air Craft Marine Products Inc.

REQ.	ITEM	PART NO.	DESCRIPTION	SYMBOL					
			<b>THE TECHNICAL MATERIEL CORP.</b> MAMARONECK, NEW YORK						
			<b>Solderless, Terminal</b>						
ISSUE	ITEM	CHANGED FROM	DATE	CH. NO.	DRAFTS	CHECKER	ENG. APP.		
TOLERANCES			SCALE:						
DEC. DIM. ±			MAXIMUM ALLOWABLE TOLERANCES HAVE BEEN DETERMINED AND ANY DEVIATIONS WILL BE CAUSE FOR REJECTION. REMOVE ALL BURRS AND SHARP EDGES						
FRAC. DIM. ±									
ANGULAR DIM. ±									
TYPE & TEMPER		HEAT TREAT. SPEC.		DRAWN		CHECKED		FINAL APPROVAL	
FINISH & SPEC. NO.		ELEC. DES. APP.		MECH. DES. APP.				TE-165	

CHART-1	
SYM	THREAD
04	0440
06	0632
08	0832
10	1032

CHART-2		
SYM	MATERIAL	TYPE
A	ALUMINUM	17S-T3
B	BRASS	FREE TURNING
S	STEEL	

CHART-3	
SYM	FINISH
L	CAUSTIC DIP LACQUER
C	CADMIUM PLATED
N	NO FINISH
E	YELLOW IRIDITES 404

REQ. PER UNIT	USED ON			TE-166 A
	MODEL	ASS'Y. NO.	DATE	

# STANDARD DRAWING

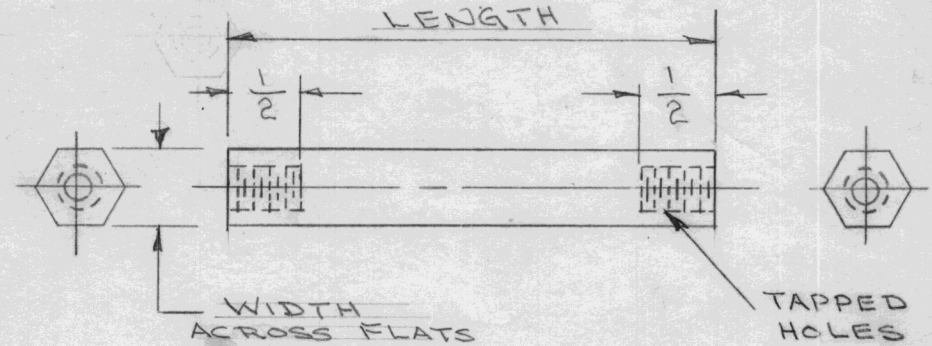


CHART 4	
SYM	REQ. TAPPED HOLES
T	ONE HOLE REQ
T2	2 HOLES REQ

## NOMENCLATURE DESIGNATION

TE-166-08-A-L-2.93-T2

TMC DWG No.

MATERIAL FINISH  
(CHART 2) (CHART 3)

TAPPED HOLES REQ  
(CHART 4)

THREAD SIZE  
CHART 1

LENGTH  
EXAMPLE - 2.93 = 2 15/16"  
" 3.75 = 3 3/4"

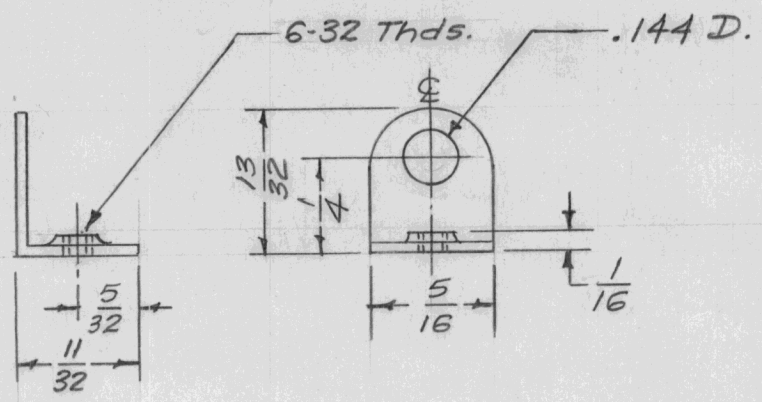
USE 2 SIZE DWG. "TE"

REQ.	ITEM	PART NO.	DESCRIPTION	SYMBOL									
		3/8 HEX ROD	THE TECHNICAL MATERIEL CORP. MAMARONECK, NEW YORK	TE-166 A									
		STOCK SIZE											
		SEE CHART 2											
A	1	"E" ADDED TO CHART 3	SPACERS										
		34-16-64 11237 A.M. @	3/8 HEX. ROD										
ISSUE	ITEM	CHANGED FROM	DATE	CH. NO.	DRAFTS	CHECKER	ENG. APP.	MATERIAL					
TOLERANCES			SCALE:										
DEC. DIM. ±			MAXIMUM ALLOWABLE TOLERANCES HAVE BEEN DETERMINED AND ANY DEVIATIONS WILL BE CAUSE FOR REJECTION.										
FRAC. DIM. ±			REMOVE ALL BURRS AND SHARP EDGES										
ANGULAR DIM. ±			CHART 2	TYPE & TEMPER	HEAT TREAT. SPEC.	DRAWN	CHECKED	FINAL APPROVAL					
			SEE CHART 3	FINISH & SPEC. NO.		ELEC. DES. APP.	MECH. DES. APP.						



REQ. PER UNIT	USED ON		
	MODEL	ASS'Y. NO.	DATE
8	SBE-1	A-1440	7-18-57
6	SBE-2	A-1440	3-12-58
2	SBE-2	A-1513	3-12-58
	KFA-1		5-17-58

TE-167



Ref - Zierick Mfg. Co. # 176

ISSUE	ITEM	CHANGED FROM	DATE	CH. NO.	DRAFTS	CHECKER	ENG. APP.	REQ. ITEM	PART NO.	DESCRIPTION	SYMBOL				
								.032 THK. STOCK SIZE		THE TECHNICAL MATERIEL CORP. MAMARONECK, NEW YORK					
								BRASS		LUG, ANGLE, THREADED					
								MATERIAL		SBE-					
										67-18-57	Q03	APB			
TOLERANCES								SCALE:		DRAWN		CHECKED	FINAL APPROVAL		
DEC. DIM. ± FRAC. DIM. ± ANGULAR DIM. ±								MAXIMUM ALLOWABLE TOLERANCES HAVE BEEN DETERMINED AND ANY DEVIATIONS WILL BE CAUSE FOR REJECTION. REMOVE ALL BURRS AND SHARP EDGES				CAD. PLATE		TE-167	
								FINISH & SPEC. NO.		ELEC. DES. APP.		MECH. DES. APP.			



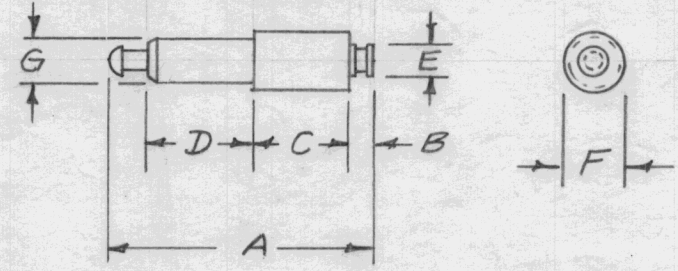
# STANDARD DRAWING

REQ. PER UNIT	USED ON			TE-169	A
	MODEL	ASS'Y. NO.	DATE		

TMC NO.	MFG. PART NO.	VOLTAGE RATING	ACTUAL VOLTAGE FLASH-OVER	CAP. mmf	DIMENSIONS							MTG. HOLE DEBURR ONE EDGE
					A	B	C	D	E	F	G	
TE-169-1	FT-1000	2000	6000	1.0	.740	1/8	.187	.212	3/32	3/16	.171	.158
TE-169-2	FT-1100	2000	6000	1.0	.740	1/8	.250	.150	3/32	3/16	.171	.158
TE-169-3	FT-1500	2500	7000	1.2	.865	1/8	.250	.275	3/32	3/16	.171	.158
TE-169-4	FT-2000	3500	9000	1.2	1.115	1/8	.375	.400	1/8	3/16	.171	.158
TE-169-5	FT-2500	4500	11000	2.0	1.365	1/8	.500	.525	1/8	1/4	.217	.204
TE-169-6	FT-4000	5500	13000	2.0	1.965	1/8	.800	.825	1/8	1/4	.217	.204

**NOTES:**

1. Solder Terminal - Brass, Silver Plate
2. "G" Diam. of teflon held to  $\pm .002 - .000$
3. MOUNTING HOLE must be the "G" Diam. minus  $.013 \pm .002$  (Deburr one edge of hole)
4. Minimum protrusion of bushing thru chassis -  $.025$

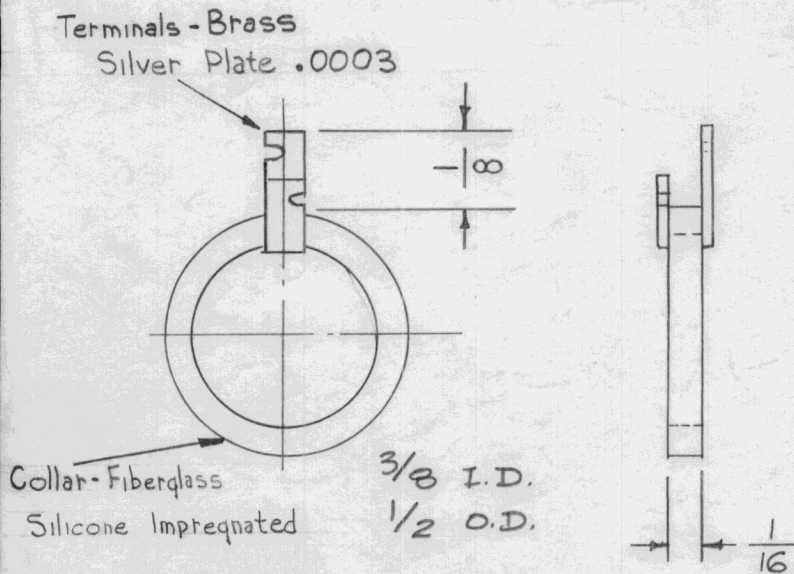


REF: SEAELECTRO CORP

REQ.	ITEM	PART NO.	DESCRIPTION				SYMBOL
			THE TECHNICAL MATERIEL CORP. MAMARONECK, NEW YORK				
			STOCK SIZE				
			TEFLON				
			MATERIAL				
			FEED-THRU, TEFLON, PRESS FIT				
A	1	MTG. HOLE COL. ADD. TO CHART	1-12-65	13272	22	@	JH
ISSUE ITEM CHANGED FROM			DATE	CH. NO.	DRAFTS	CHECKER	ENG. APP.
TOLERANCES			SCALE:				
DEC. DIM. $\pm$			MAXIMUM ALLOWABLE TOLERANCES HAVE BEEN DETERMINED AND ANY DEVIATIONS WILL BE CAUSE FOR REJECTION. REMOVE ALL BURRS AND SHARP EDGES				
FRAC. DIM. $\pm$							
ANGULAR DIM. $\pm$							
TYPE & TEMPER			HEAT TREAT. SPEC.		DRAWN		CHECKED
FINISH & SPEC. NO.			ELEC. DES. APP.		MECH. DES. APP.		
					16		JH
					DB		TE-169
							A

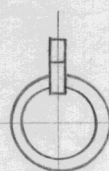
# STANDARD DRAWING

REQ. PER UNIT	USED ON			TE 170	B
	MODEL	ASS'Y. NO.	DATE		
			7-31-57		

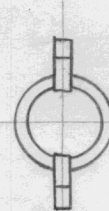


DIMENSIONS FOR REF. ONLY

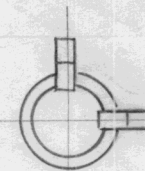
NOTE: PURCHASE TE170-4 & -5 ONLY  
MODIFY TE170-4 AS REQUIRED.



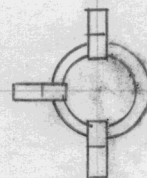
TE 170-1  
MFR. NO.  
X1565-1



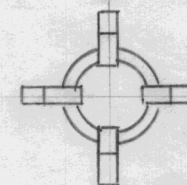
TE 170-2  
MFR. NO.  
X1565-2



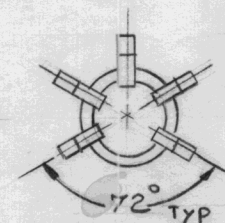
TE 170-2A  
(Angle)  
MFR. NO.  
X1565-2A



TE 170-3  
MFR. NO.  
X1565-3



TE 170-4  
MFR. NO.  
X1565-4



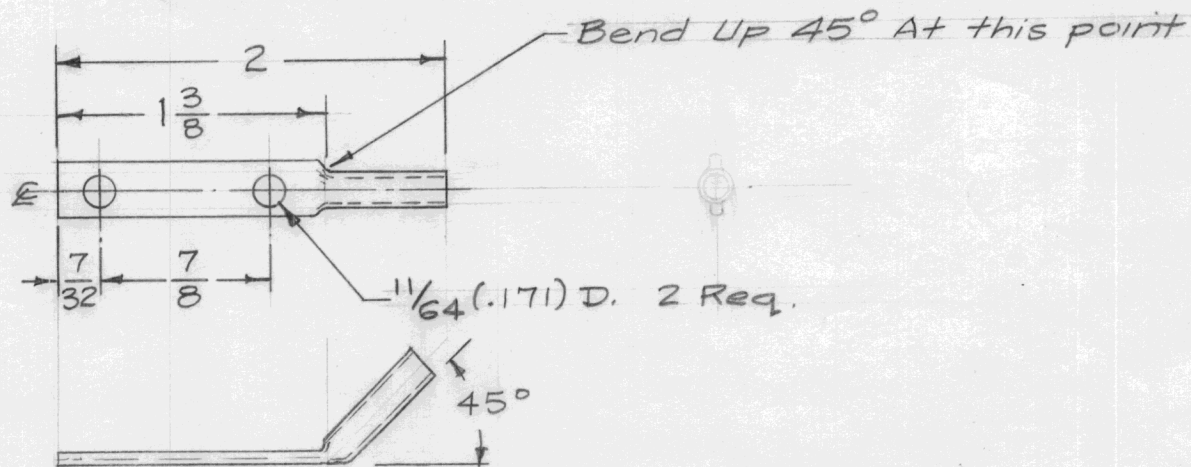
TE 170-5  
MFR. NO.  
X1565-5

ISSUE	ITEM	CHANGED FROM	DATE	CH. NO.	DRAFTS	CHECKER	ENG. APP.	REQ. ITEM	PART NO.	DESCRIPTION	SYMBOL	
B		ADDED PURCH. NOTE, DELE CAMB. THERM. TOS 401-167	7-21-66	16591	RME	[Signature]	[Signature]			THE TECHNICAL MATERIEL CORP. MAMARONECK, NEW YORK	B	
A	2	Collar & Terminal Notes Added	3-24-62	6511	[Signature]	[Signature]			STOCK SIZE			TERMINAL, COLLAR
	1	TE-170-5 ADDED							MATERIAL			
TOLERANCES			SCALE: S401-167 (X1565)									
DEC. DIM. ± FRAC. DIM. ± ANGULAR DIM. ±			MAXIMUM ALLOWABLE TOLERANCES HAVE BEEN DETERMINED AND ANY DEVIATIONS WILL BE CAUSE FOR REJECTION. REMOVE ALL BURRS AND SHARP EDGES									
			TYPE & TEMPER		HEAT TREAT. SPEC.		DRAWN		CHECKED		FINAL APPROVAL	
			FINISH & SPEC. NO.		ELEC. DES. APP.		MECH. DES. APP.		TE 170 B			



REQ. PER UNIT	USED ON		
	MODEL	ASS'Y. NO.	DATE
1	ATS-50TU		12-17-57
1	ATS-70TU		12-17-57
1	ATS-50(70)TU2		6-10-59

TE-171



FINISH:

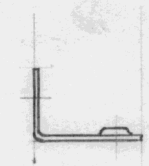
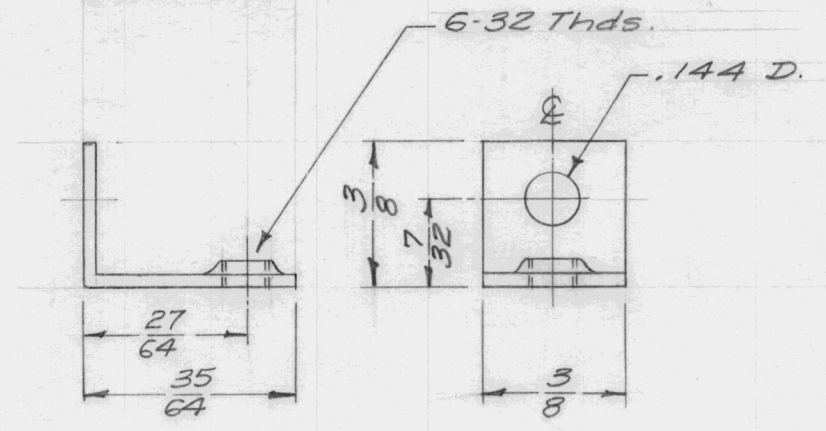
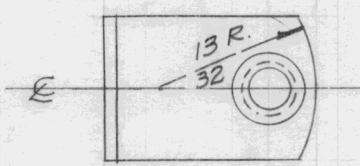
S-245 SILVER PLATE .0005

S-423 IRIDITE 18-P SILVER KOTE

ISSUE	ITEM	CHANGED FROM	DATE	CH. NO.	DRAFTS	CHECKER	ENG. APP.	REQ. ITEM	PART NO.	DESCRIPTION	SYMBOL				
								3/16 OD / .127 I.D.		THE TECHNICAL MATERIEL CORP. MAMARONECK, NEW YORK					
								STOCK SIZE			LUG, CONTACT				
								Copper Tubing							
								MATERIAL							
								Soft Seamless	#	16 12/17/57	JAIDE	OK AJT			
TOLERANCES			SCALE: FULL												
DEC. DIM. ±			MAXIMUM ALLOWABLE TOLERANCES HAVE BEEN DETERMINED AND ANY DEVIATIONS WILL BE CAUSE FOR REJECTION. REMOVE ALL BURRS AND SHARP EDGES												
FRAC. DIM. ± 1/64															
ANGULAR DIM. ±															
								TYPE & TEMPER	HEAT TREAT. SPEC.	DRAWN	CHECKED	FINAL APPROVAL			
								SEE NOTE		QBR	QBT	TE-171			
								FINISH & SPEC. NO.		ELEC. DES. APP.	MECH. DES. APP.				



REQ. PER UNIT	USED ON			TE-172
	MODEL	ASS'Y. NO.	DATE	
4	RFA-1		5-17-58	



ACTUAL SIZE

Ref- Zierrick Mfg. Co. #370

ISSUE	ITEM	CHANGED FROM	DATE	CH. NO.	DRAFTS	CHECKER	ENG. APP.	REQ. ITEM	PART NO.	DESCRIPTION	SYMBOL	
								.032 THK.		THE TECHNICAL MATERIEL CORP. MAMARONECK. NEW YORK		
								STOCK SIZE			LUG, ANGLE, THREADED	
								Brass				
								MATERIAL				
										16 5/17/58		
								TYPE & TEMPER	HEAT TREAT. SPEC.	DRAWN	CHECKED	FINAL APPROVAL
								Cadmium Plate			RFB	TE-172
								FINISH & SPEC. NO.		ELEC. DES. APP.	MECH. DES. APP.	

TOLERANCES

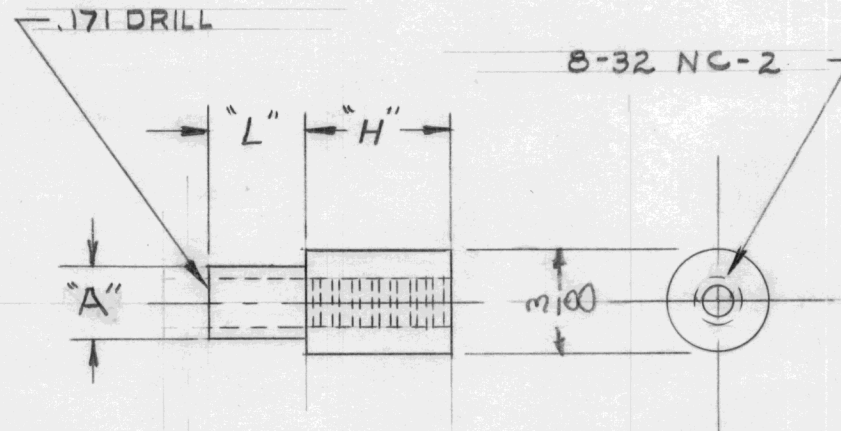
SCALE: 2X

DEC. DIM. ±  
FRAC. DIM. ±  
ANGULAR DIM. ±

MAXIMUM ALLOWABLE TOLERANCES HAVE BEEN DETERMINED AND ANY DEVIATIONS WILL BE CAUSE FOR REJECTION.  
REMOVE ALL BURRS AND SHARP EDGES

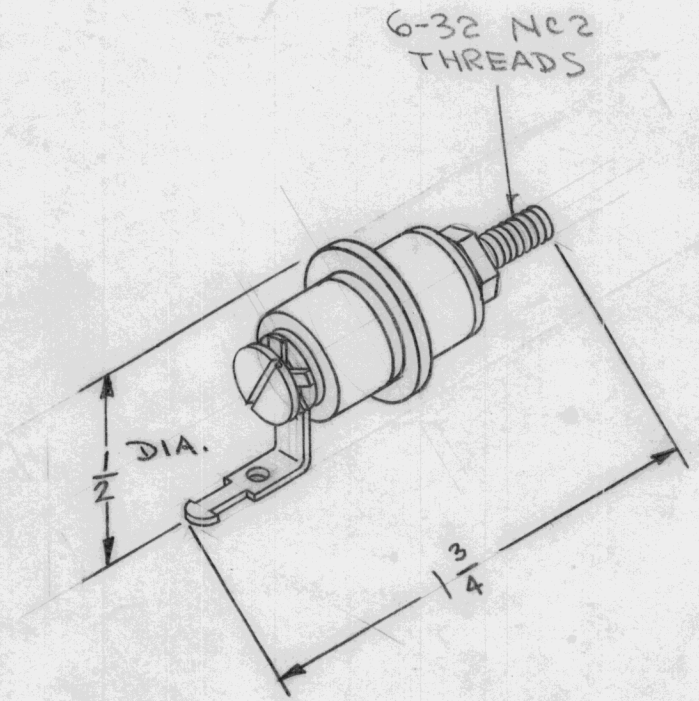
							REQ. PER UNIT	USED ON			TE-174	A	
							4	MODEL	ASS'Y. NO.	DATE			
								CAB-7	TE-174-1	10-24-58			
TMC NO.	CAT. NO.	"L" SHANK	MTG. THICKNESS	"H"	MTG. HOLE	"A"							
TE-174-1		7/64	.064	1/2	7/32	7/32							
TE174-2	9573C- B-0832-4	.135	.081	1/8	.234 <sup>+0.003</sup> -.000	.234 <sup>+0.000</sup> -.003							

# STANDARD DRAWING



ISSUE	ITEM	CHANGED FROM	DATE	CH. NO.	DRAFTS	CHECKER	ENG. APP.	REQ. ITEM	PART NO.	DESCRIPTION	SYMBOL		
A	4	STD. DWG STAMP ADDED	4.30.	139						THE TECHNICAL MATERIEL CORP. MAMARONECK. NEW YORK			
	3	TE174-2 ADDED											
	2	"A" DIM ADDED TO CHART								SPACER, STANDOFF			
	1	FINISH WAS S105	65	32						RIVET TYPE 8-32			
TOLERANCES								SCALE:					
DEC. DIM. ± FRAC. DIM. ± ANGULAR DIM. ±								MAXIMUM ALLOWABLE TOLERANCES HAVE BEEN DETERMINED AND ANY DEVIATIONS WILL BE CAUSE FOR REJECTION. REMOVE ALL BURRS AND SHARP EDGES					
								TYPE & TEMPER	HEAT TREAT. SPEC.	DRAWN	CHECKED	FINAL APPROVAL	
								S135 - NICKEL PLATE				TE-174	A
								FINISH & SPEC. NO.	ELEC. DES. APP.	MECH. DES. APP.			

REQ. PER UNIT	USED ON			TE-175
	MODEL	ASS'Y. NO.	DATE	
	GPT-10K			



ASSEMBLY CONSISTS OF BRASS CADMIUM  
PLATED ROD, NEOPRENE GLAND,  
STEATITE INSULATION.

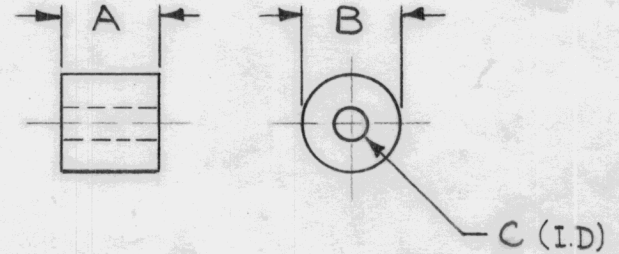
ISSUE	ITEM	CHANGED FROM	DATE	CH. NO.	DRAFTS	CHECKER	ENG. APP.	REQ.	ITEM	PART NO.	DESCRIPTION	SYMBOL	
											THE TECHNICAL MATERIEL CORP. MAMARONECK, NEW YORK TERMINAL BUSHING ASS'Y.		
										STOCK SIZE			
										MATERIAL			
TOLERANCES			SCALE:	NPL 2A-1720							MJT 5-25-59	<i>COO</i>	<i>AMB</i>
DEC. DIM. ± FRAC. DIM. ± ANGULAR DIM. ±			MAXIMUM ALLOWABLE TOLERANCES HAVE BEEN DETERMINED AND ANY DEVIATIONS WILL BE CAUSE FOR REJECTION: REMOVE ALL BURRS AND SHARP EDGES					TYPE & TEMPER	HEATTREAT. SPEC.	DRAWN	CHECKED	FINAL APPROVAL	
										<i>2</i>	<i>File</i>	TE-175	
								FINISH & SPEC. NO.		ELEC. DES. APP.	MECH. DES. APP.		



# STANDARD DRAWING

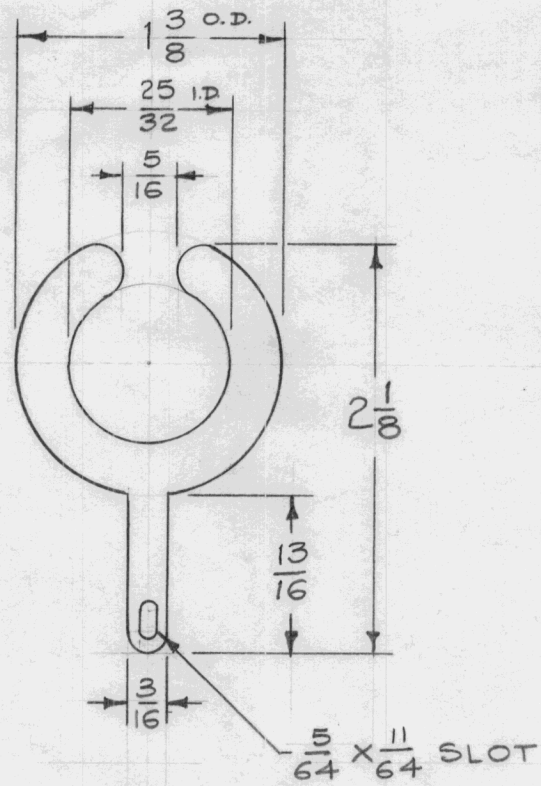
REQ. PER. UNIT 3 RE	USED ON		TE-176	C
	MODEL	ASS'Y. NO.		
	GPT-10K	AX-130	4-27-61	

TMC PART #	"A"	"B"	"C" (I.D)
TE-176-1	1/2	1/2	11/64
TE-176-2	11/16	1/2	5/16
TE-176-3	7/16	.430	.196
TE-176-4	3/8	3/8	11/64
TE-176-5	1"	3/8	11/64



ISSUE	ITEM	CHANGED FROM	DATE	CH. NO.	DRAFTS	CHECKER	ENG. APP.	REQ. ITEM	PART NO.	DESCRIPTION	SYMBOL										
C		TE-176-4 & 5, ADDED	8/27/65	14719	HVV	JCB	JC	SEE CHART		THE TECHNICAL MATERIEL CORP. MAMARONECK, NEW YORK STANDOFF, SILICONE GLASS	C										
B	1	ADDED TE-176-3	3-9-64	10993	AM	JCB	JCB	STOCK SIZE													
A	2	STANDARD MADE MAT. WAS POLYSTERENE	4/27/61	4803	WF	JCB		SILICONE GLASS													
								MATERIAL													
TOLERANCES			SCALE: FULL (DO NOT SCALE)					G-7													
DEC. DIM. ±			MAXIMUM ALLOWABLE TOLERANCES HAVE BEEN DETERMINED AND ANY DEVIATIONS WILL BE CAUSE FOR REJECTION. REMOVE ALL BURRS AND SHARP EDGES					TYPE & TEMPER		HEAT TREAT. SPEC.		DRAWN		CHECKED		FINAL APPROVAL					
FRAC. DIM. ± 1/64																W.A.F.		JCB			
ANGULAR DIM. ±																AR		TE-176			
								FINISH & SPEC. NO.		ELEC. DES. APP		MECH. DES. APP									

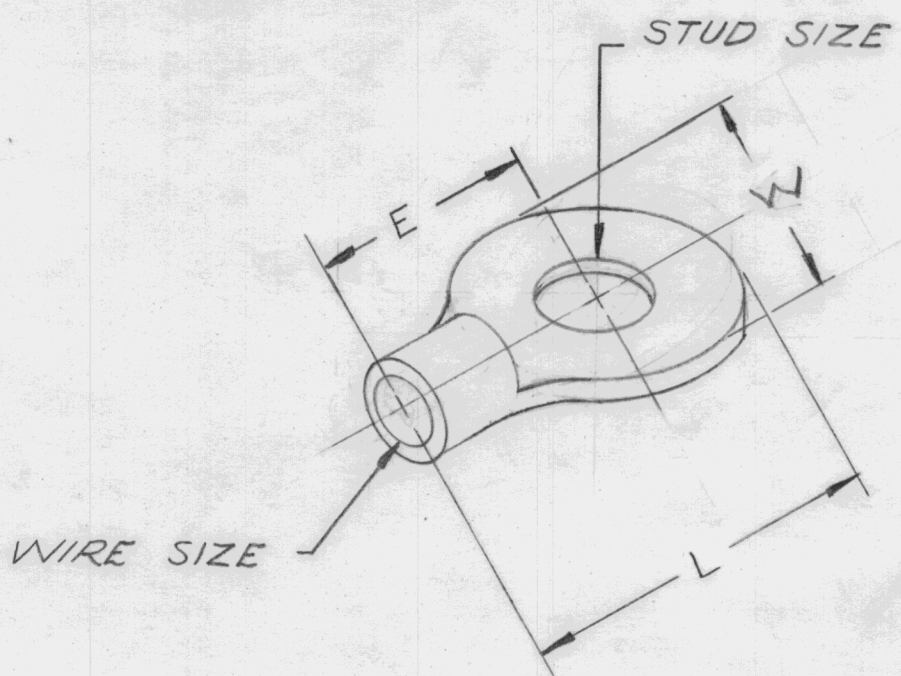
REQ. PER. UNIT	USED ON			TE-177
	MODEL	ASSY. NO.	DATE	
1	GPT-10K	AJ-100	12-15-59	



Ref-Zierick Mfg. Corp. #129

ISSUE	ITEM	CHANGED FROM	DATE	CH. NO.	DRAFTS	CHECKER	ENG. APP.	REQ. ITEM	PART NO.	DESCRIPTION	SYMBOL	
								.020 Thick		THE TECHNICAL MATERIEL CORP.		
								STOCK SIZE		MAMARONECK, NEW YORK		
								Brass		LUG, TERMINAL, HORSESHOE		
								MATERIAL				
										16 <sup>12/15/59</sup>	<i>[Signature]</i>	
										<i>[Signature]</i>	<i>[Signature]</i>	
								TYPE & TEMPER	HEATTREAT. SPEC.	DRAWN	CHECKED	FINAL APPROVAL
								Hot Tinned				TE-177
								FINISH & SPEC. NO.	ELEC. DES. APP	MECH. DES. APP		

TMC PART NO.	CAT #	WIRE SIZE	STUD SIZE	W	E	L	REQ. PER. UNIT	USED ON			
TE-179-1	35664	#8(128)	1/2	1 1/4	1 11/32	1 31/32		MODEL	ASS'Y. NO.	DATE	TE-179



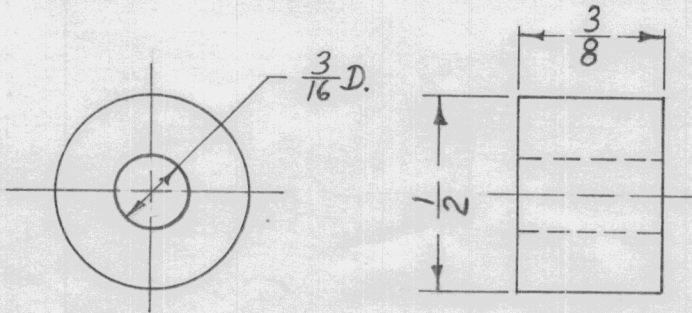
(TYPE "SOLISTRAND")

AIRCRAFT-MARINE PRODUCTS, INC.

ISSUE	ITEM	CHANGED FROM	DATE	CH. NO.	DRAFTS	CHECKER	ENG. APP.	REQ.	ITEM	PART NO.	DESCRIPTION	SYMBOL	
											THE TECHNICAL MATERIEL CORP. MAMARONECK, NEW YORK		
								STOCK SIZE		TERMINAL, SOLDERLESS			
TOLERANCES								MATERIAL		DRAWN <i>Rv</i> CHECKED <i>Jhd</i> FINAL APPROVAL <i>DB</i>			
DEC. DIM. ± FRAC. DIM. ± ANGULAR DIM. ±			SCALE:					TYPE & TEMPER		HEATTREAT. SPEC.		TE-179	
MAXIMUM ALLOWABLE TOLERANCES HAVE BEEN DETERMINED AND ANY DEVIATIONS WILL BE CAUSE FOR REJECTION. REMOVE ALL BURRS AND SHARP EDGES								FINISH & SPEC. NO.		ELEC. DES. APP		MECH. DES. APP	

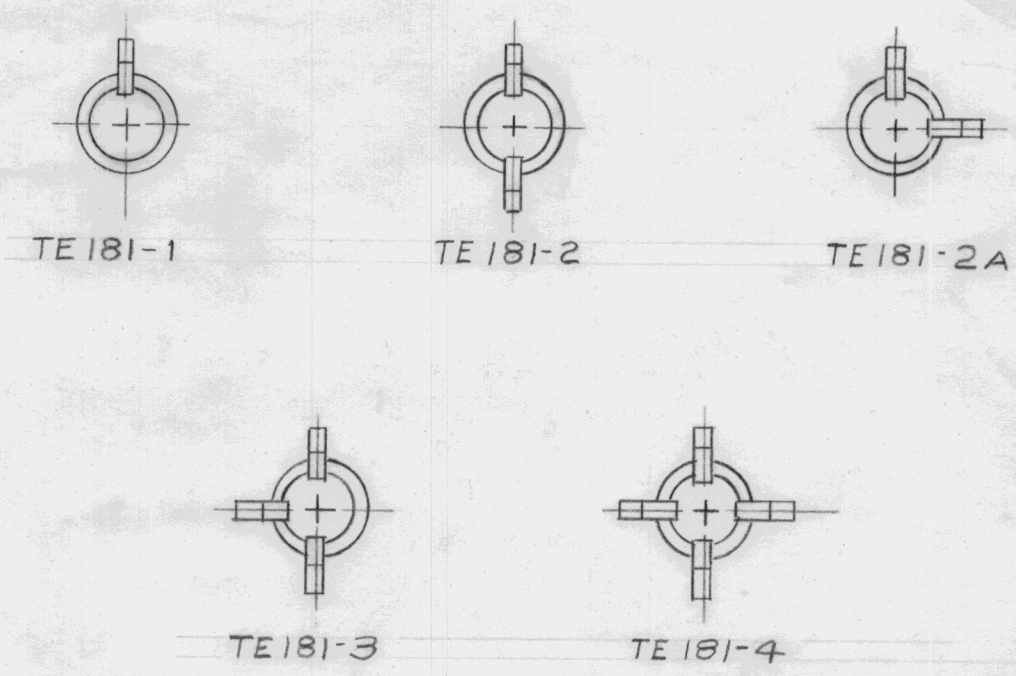
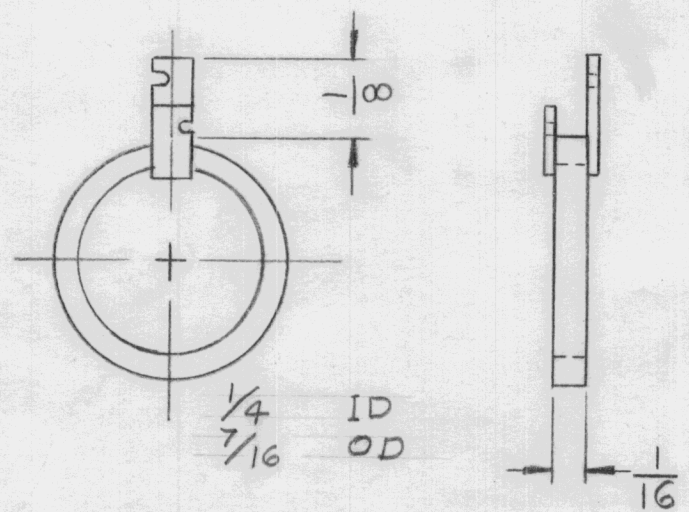


REQ. PER. UNIT	USED ON			TE-180
	MODEL	ASS'Y. NO.	DATE	
2	GPR		8-29-60	



							REQ. ITEM	PART NO.	DESCRIPTION			SYMBOL		
							$\frac{1}{2} D.$		THE TECHNICAL MATERIEL CORP.					
							STOCK SIZE		MAMARONECK, NEW YORK					
							ALUMINUM		SPACER					
							MATERIAL							
ISSUE	ITEM	CHANGED FROM	DATE	CH. NO.	DRAFTS	CHECKER	ENG. APP.	5052-H32		<i>[Signature]</i>	<i>[Signature]</i>	<i>[Signature]</i>		
TOLERANCES			SCALE: 1:2				TYPE & TEMPER		HEAT TREAT. SPEC.	DRAWN	CHECKED	FINAL APPROVAL		
DEC. DIM. $\pm$			MAXIMUM ALLOWABLE TOLERANCES HAVE BEEN DETERMINED AND ANY DEVIATIONS WILL BE CAUSE FOR REJECTION. REMOVE ALL BURRS AND SHARP EDGES				S404 YELL. IRIDITE				<i>[Signature]</i>	TE-180		
FRAC. DIM. $\pm$ 1/64							FINISH & SPEC. NO.		ELEC. DES. APP	MECH. DES. APP				
ANGULAR DIM. $\pm$														

REQ. PER. UNIT	USED ON			TE 181	A
	MODEL	ASS'Y. NO.	DATE		
	CHG				



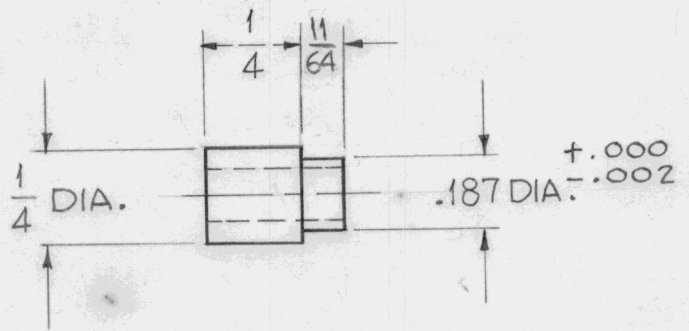
DIMENSIONS FOR REF. ONLY

NOTE: PURCHASE TE 181-4 ONLY AND MODIFY AS REQUIRED.

REQ.	ITEM	PART NO.	DESCRIPTION				SYMBOL
			THE TECHNICAL MATERIEL CORP.				
			MAMARONECK, NEW YORK				
			TERMINAL, COLLAR.				
			$\frac{1}{4}$ ID				
A	ADDED PURCH. NOTE, DELE. C.A.M.B. CORP. TO S401-167	7-21-66 16591 RME	QC/B	MM			
ISSUE	ITEM	CHANGED FROM	DATE	CH. NO.	DRAFTS	CHECKER	ENG. APP.
TOLERANCES			SCALE: S401-167				
DEC. DIM. $\pm$			MAXIMUM ALLOWABLE TOLERANCES HAVE BEEN DETERMINED AND ANY DEVIATIONS WILL BE CAUSE FOR REJECTION. REMOVE ALL BURRS AND SHARP EDGES				
FRAC. DIM. $\pm$							
ANGULAR DIM. $\pm$							
TYPE & TEMPER		HEAT TREAT. SPEC.	DRAWN	CHECKED	FINAL APPROVAL		
FINISH & SPEC. NO.		ELEC. DES. APP.	MECH. DES. APP.	TE 181		A	

REQ. PER UNIT	USED ON			TE-182	B
	MODEL	ASS'Y. NO.	DATE		
2	RTF, RTF-2		9-8-60		

NO. 27 DRILL THRU

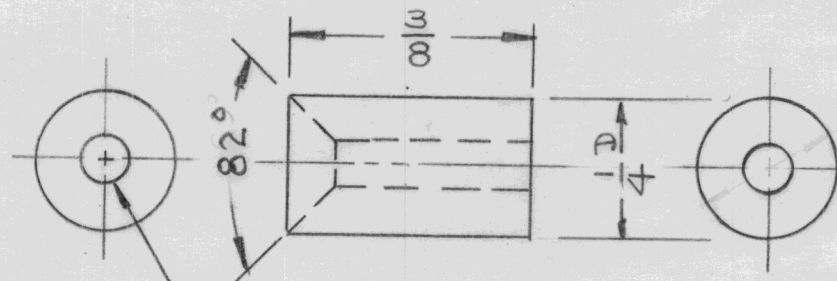
STANDARD DRAWING

REF - TMC-PT NO. TE-108-1

REQ.	ITEM	PART NO.	DESCRIPTION				SYMBOL
			THE TECHNICAL MATERIEL CORP. MAMARONECK, NEW YORK				
			STOCK SIZE				
B	1		FINISH WAS S105				
A	1		DIM. 11/64 WAS 7/64				
			MATERIAL				
			BRASS				
			STANDOFF, RIVET TYPE				
ISSUE	ITEM	CHANGED FROM	DATE	CH. NO.	DRAFTS	CHECKER	ENG. APP.
TOLERANCES			SCALE: TWICE SIZE				
DEC. DIM. ± FRAC. DIM. ± ANGULAR DIM. ±			MAXIMUM ALLOWABLE TOLERANCES HAVE BEEN DETERMINED AND ANY DEVIATIONS WILL BE CAUSE FOR REJECTION. REMOVE ALL BURRS AND SHARP EDGES				
TYPE & TEMPER		HEAT TREAT. SPEC.		DRAWN		CHECKED	
S135-NICKEL PLATE				J.C. Biele		H. De	
FINISH & SPEC. NO.		ELEC. DES. APP.		MECH. DES. APP.		FINAL APPROVAL	
						TE-182 B	



REQ. PER. UNIT	USED ON			TE-183
	MODEL	ASS'Y. NO.	DATE	
	2 SBE-2			
2	SBE-3	AO-101		



DRILL THRU .144 D. & C'SINK FOR 6-32 FHS

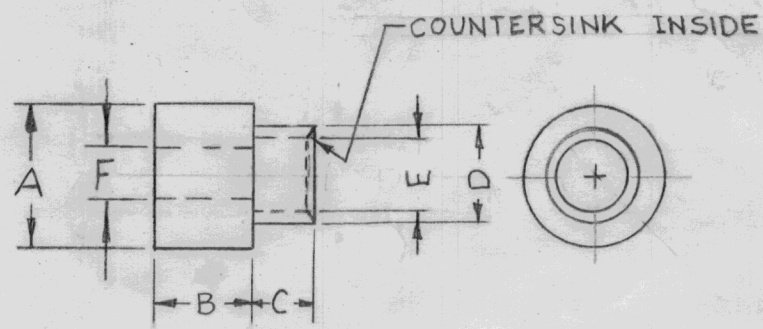
ISSUE	ITEM	CHANGED FROM	DATE	CH. NO.	DRAFTS	CHECKER	ENG. APP.	REQ.	ITEM	PART NO.	DESCRIPTION	SYMBOL
										1/4 OD	THE TECHNICAL MATERIEL CORP. MAMARONECK, NEW YORK	SPACER, COUNTERSUNK
										STOCK SIZE		
										BRASS		
										MATERIAL		
										1/2 H	RU220	
										TYPE & TEMPER	CHECKED	FINAL APPROVAL
										HEAT TREAT. SPEC.		
										NICKEL PLATE		TE-183
										FINISH & SPEC. NO.	ELEC. DES. APP	MECH. DES. APP

DEC. DIM. ±  
FRAC. DIM. ± 1/64  
ANGULAR DIM. ±

SCALE: (DO NOT SCALE)  
MAXIMUM ALLOWABLE TOLERANCES HAVE BEEN DETERMINED AND ANY DEVIATIONS WILL BE CAUSE FOR REJECTION.  
REMOVE ALL BURRS AND SHARP EDGES

TMC PART NO.	MFG. NO. AMATOM	A (OD)	B	C	D	(E (ID))	F	MTG HOLE	MODEL V/O
TE 184-1	5702	3/8	1/4 $\pm .005$	.165 $^{+.003}$	.250 $^{+.002}$	.218 $^{+.003}$	.171 $^{+.003}$	.257	GPT-40K
TE 184-2		3/8	1/4	.125 $^{+.005}$	.225 $^{+.005}$	.189	.189	.234	GPT-40K
TE 184-3		1/4	1/4	.093	.187 $^{+.000}$	.146	.146	.189	GPT-40K

TE184 D



TMC P/N SHALL BE IN THE FOLLOWING FORM.

TE184-2-5

BASIC P/N    SIZE    FINISH    { BLANK - NICKEL PLATE 5135  
S-SILVER PLATE 5245

STANDARD DRAWING

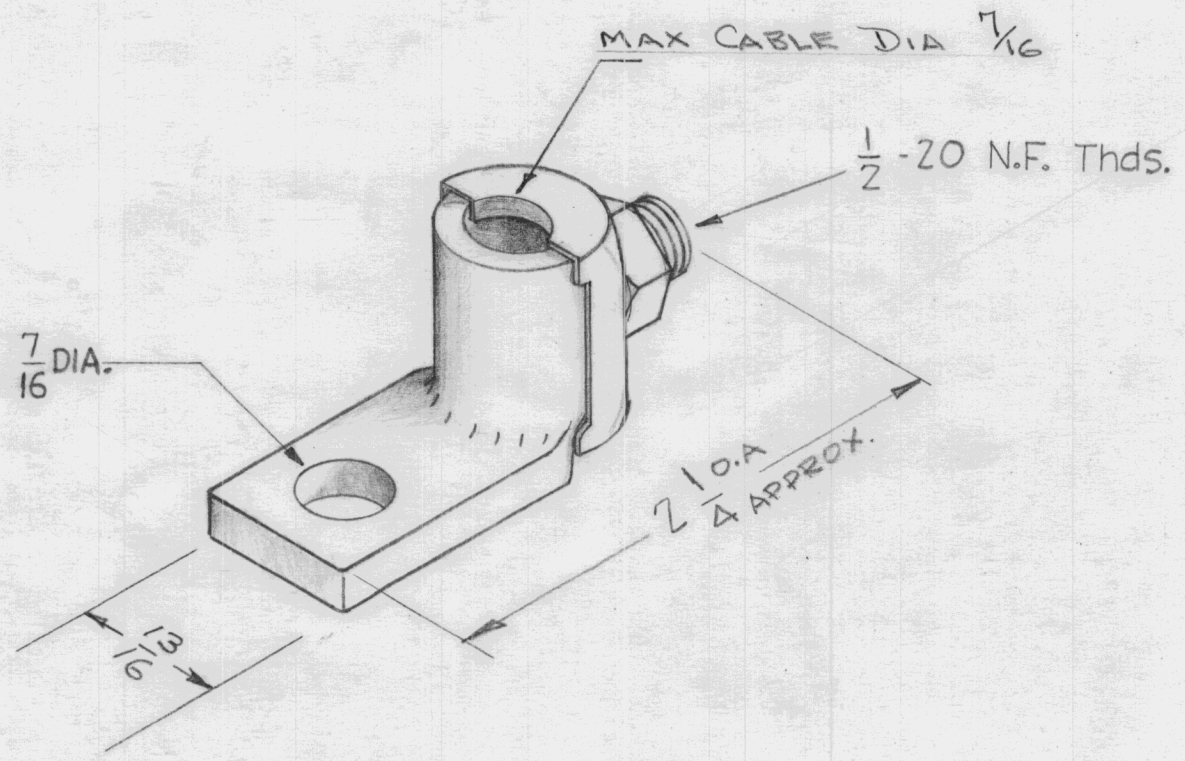
MTG HOLE COL. ADDED.

ISSUE	ITEM	CHANGED FROM	DATE	CH. NO.	DRAFTS	CHECKER	ENG. APP.	REQ.	ITEM	PART NO.	DESCRIPTION	SYMBOL		
D	-	FINISH COL. DELETED BRK'DWELL HOLE COL. ADD	1/12/66	15491	R/V	JLB	JC				THE TECHNICAL MATERIEL CORP. MAMARONECK, NEW YORK SPACER, RIVET TYPE	D		
C	2	FINISH & MODEL ADD. TO CHART. C'SINK NOTE WAS CHAMFER INSIDE	5-4-65	13921	SL	JLB	JC							
B	2	MTG. HOLE COL. ADDED	4-26-62	6632	LS	JLB	BP							
B	1	TE-184-2-3 ADDED												
A	1	DWG REVISED	11/2/60	3356	BY	JLB	BP							
TOLERANCES			SCALE: 2-1 (DO NOT SCALE)							1/2 HARD		RUZZO	JLB	JC
DEC. DIM. $\pm .005$ FRAC. DIM. $\pm 1/64$ ANGULAR DIM. $\pm 30'$			MAXIMUM ALLOWABLE TOLERANCES HAVE BEEN DETERMINED AND ANY DEVIATIONS WILL BE CAUSE FOR REJECTION. REMOVE ALL BURRS AND SHARP EDGES							SEE CHART		DRAWN	CHECKED	FINAL APPROVAL
										FINISH & SPEC. NO.		ELEC. DES. APP.	MECH. DES. APP.	TE 184 D



REQ. PER. UNIT	USED ON		
	MODEL	ASS'Y. NO.	DATE
2	ATA-2		3-8-61
2	ATA-3		3-8-61
2	ATA-4		3-8-61
2	ATA-5		3-8-61

TE-185



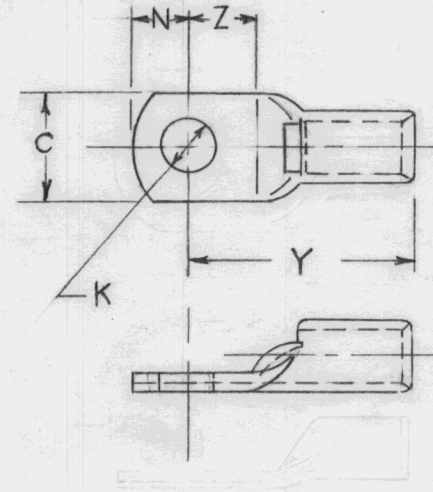
Ref. Burndy #QA-26B-90

							REQ. ITEM	PART NO.	DESCRIPTION	SYMBOL			
									THE TECHNICAL MATERIEL CORP.				
									MAMARONECK, NEW YORK				
									LUG, TERMINAL				
ISSUE	ITEM	CHANGED FROM	DATE	CH. NO.	DRAFTS	CHECKER	ENG. APP.						
TOLERANCES			SCALE: Do Not Scale										
DEC. DIM. ±			MAXIMUM ALLOWABLE TOLERANCES HAVE BEEN DETERMINED AND ANY DEVIATIONS WILL BE CAUSE FOR REJECTION. REMOVE ALL BURRS AND SHARP EDGES				TYPE & TEMPER	HEATTREAT. SPEC.	DRAWN	CHECKED	FINAL APPROVAL		
FRAC. DIM. ±													
ANGULAR DIM. ±													
							FINISH & SPEC. NO.		ELEC. DES. APP	MECH. DES. APP			
											TE-185		



TMC PART No	WIRE SIZE	STUD SIZE	CAT. No.	C	K	N	Y	Z	REQ. PER. UNIT	USED ON			TE-186
									2	MODEL	ASSY. NO.	DATE	
TE-186-1	6	1/4	YAV6CL	.50	.272	.25	1.02	.30		RAC-30A	A-1178	2-21-61	

# STANDARD DRAWING

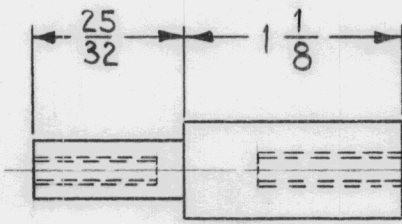
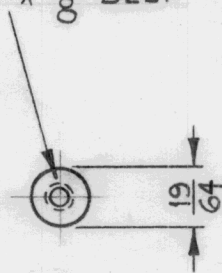


REF: BURNDY CORP

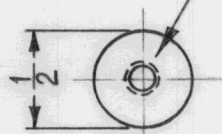
REQ.	ITEM	PART NO.	DESCRIPTION		SYMBOL								
			THE TECHNICAL MATERIEL CORP.										
			MAMARONECK, NEW YORK										
			LUG, SOLDERLESS										
			COPPER										
			MATERIAL										
			TIN PLATED										
			FINISH & SPEC. NO.										
ISSUE	ITEM	CHANGED FROM	DATE	CH. NO.	DRAFTS	CHECKER	ENG. APP.	TYPE & TEMPER	HEAT TREAT. SPEC.	DRAWN	CHECKED	FINAL APPROVAL	
TOLERANCES			SCALE:										
DEC. DIM. ±			MAXIMUM ALLOWABLE TOLERANCES HAVE BEEN DETERMINED AND ANY DEVIATIONS WILL BE CAUSE FOR REJECTION.										
FRAC. DIM. ±			REMOVE ALL BURRS AND SHARP EDGES										
ANGULAR DIM. ±													

REQ. PER UNIT	USED ON			TE-187
	MODEL	ASS'Y. NO.	DATE	
8	GPT-10K	AX-130	4-27-61	

6-32 TAP X  $\frac{5}{8}$  DEEP



8-32 TAP X  $\frac{3}{4}$  DEEP

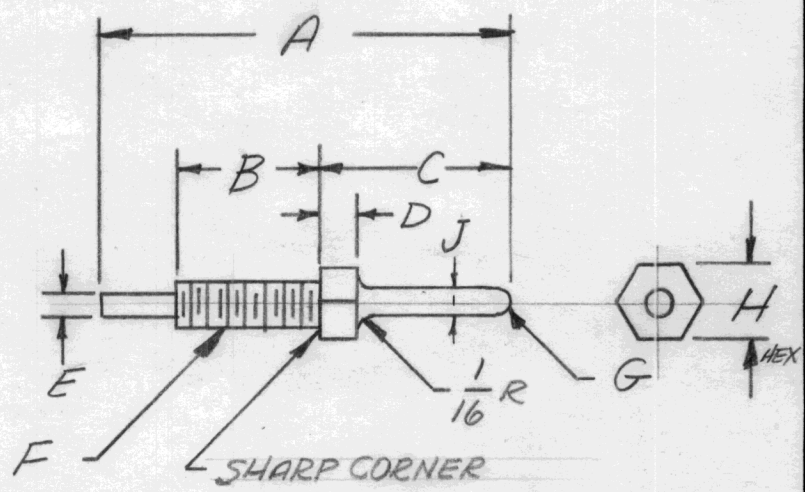


ISSUE	ITEM	CHANGED FROM	DATE	CH. NO.	DRAFTS	CHECKER	ENG. APP.	REQ.	ITEM	PART NO.	DESCRIPTION	SYMBOL				
											THE TECHNICAL MATERIEL CORP. MAMARONECK, NEW YORK SPACER, SHOULDER					
										$\frac{1}{2}$ DIA.						
										STOCK SIZE						
										SILICONE GLASS						
										MATERIAL						
										G-7	<i>M.A.F.</i> <i>Jde</i>	<i>DB</i>				
TOLERANCES			SCALE: FULL (DO NOT SCALE)								DRAWN	CHECKED	FINAL APPROVAL			
DEC. DIM. $\pm$			MAXIMUM ALLOWABLE TOLERANCES HAVE BEEN DETERMINED AND ANY DEVIATIONS WILL BE CAUSE FOR REJECTION. REMOVE ALL BURRS AND SHARP EDGES										TE-187			
FRAC. DIM. $\pm 1/64$																
ANGULAR DIM. $\pm$																
										FINISH & SPEC. NO.	ELEC. DES. APP	MECH. DES. APP				

THE CONTENTS OF THIS DRAWING ARE THE EXCLUSIVE PROPERTY OF THE TECHNICAL MATERIEL CORP. ITS UNAUTHORIZED USE OR REPRODUCTION IN WHOLE OR IN PART IS STRICTLY FORBIDDEN.

REQ. PER UNIT 240	USED ON		TE-191
	MODEL STANDARD	ASS'Y. NO.	

TMC PART NO.	A	B	C	D	E (DIA)	F (CL-2)	G RADIUS	H	J DIA.	MODEL	REQ. PER UNIT
TE-191-1	1/16	3/8	1/2	3/32	1/16	4-40	.039	3/16	.078	HFR-1/T	240

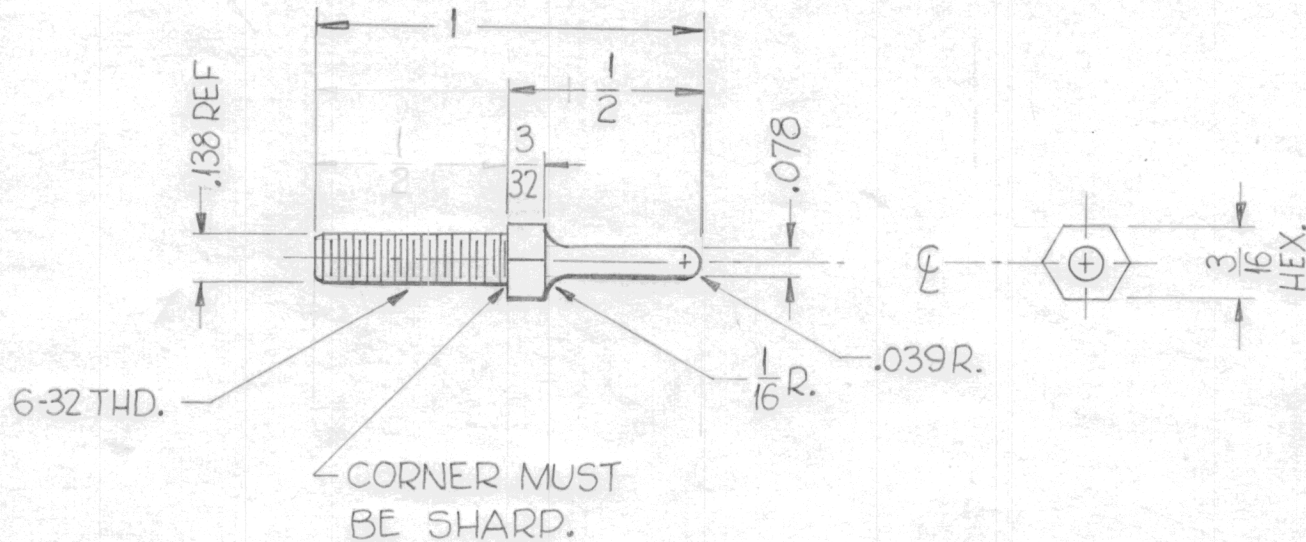


REQ.	ITEM	PART NO.	J. ANGER	DESCRIPTION	SYMBOL				
		3/16 HEX		THE TECHNICAL MATERIEL CORP.					
		STOCK SIZE		MAMARONECK, NEW YORK					
		BRASS		TERMINAL, PIN					
		MATERIAL							
SYM	DESCRIPTION	DATE	CH. NO.	DRAFTS	CHECKER	ENG. APP.			
UNLESS OTHERWISE SPECIFIED: DIMENSIONS ARE IN INCHES TOLERANCES ON FRAC. ± 1/64 DEC. ± .005 ANGLES ± 1/2°		SCALE: MAXIMUM ALLOWABLE TOLERANCES HAVE BEEN DETERMINED AND ANY DEVIATIONS WILL BE CAUSE FOR REJECTION. REMOVE ALL BURRS AND SHARP EDGES				1/2 HARD	DR	Jde	BP
		TYPE & TEMPER		HEATTREAT. SPEC.		DRAWN	CHECKED	FINAL APPROVAL	
		.0003 SILVER PLATE				J. ANGER	J. ANGER	TE-191	
		FINISH & SPEC. NO.		ELEC. DES. APP.		MECH. DES. APP.			



THE CONTENTS OF THIS DRAWING ARE THE EXCLUSIVE PROPERTY OF THE TECHNICAL MATERIEL CORP. ITS UNAUTHORIZED USE OR REPRODUCTION IN WHOLE OR IN PART IS STRICTLY FORBIDDEN.

REQ. PER UNIT	USED ON			TE-194
	MODEL	ASS'Y. NO.	DATE	
10	HFR-1/T	A-2532	5-24-62	



REQ.	ITEM	PART NO.	ANGER	DESCRIPTION	SYMBOL							
	3/16 HEX. STOCK SIZE			THE TECHNICAL MATERIEL CORP. MAMARONECK, NEW YORK								
	BRASS			TERMINAL, PIN								
SYM	DESCRIPTION	DATE	CH. NO.	DRAFTS	CHECKER	ENG. APP.	MATERIAL					
	UNLESS OTHERWISE SPECIFIED: DIMENSIONS ARE IN INCHES TOLERANCES ON FRAC. ± 1/64 DEC. ± .005 ANGLES ± 1/2°						SCALE: DOUBLE SIZE	1/2 HARD		<i>D. Mann</i>	<i>J. H.</i>	<i>BP</i>
							MAXIMUM ALLOWABLE TOLERANCES HAVE BEEN DETERMINED AND ANY DEVIATIONS WILL BE CAUSE FOR REJECTION. REMOVE ALL BURRS AND SHARP EDGES	TYPE & TEMPER .0003 SILVER PLATE-5-245	HEATTREAT.SPEC.	DRAWN	CHECKED	FINAL APPROVAL
							FINISH & SPEC. NO.		ELEC. DES. APP.	MECH. DES. APP.		TE-194

THE CONTENTS OF THIS DRAWING ARE THE EXCLUSIVE PROPERTY OF THE TECHNICAL MATERIEL CORP. ITS UNAUTHORIZED USE OR REPRODUCTION IN WHOLE OR IN PART IS STRICTLY FORBIDDEN.

REQ. PER UNIT

USED ON

MODEL

ASS'Y. NO.

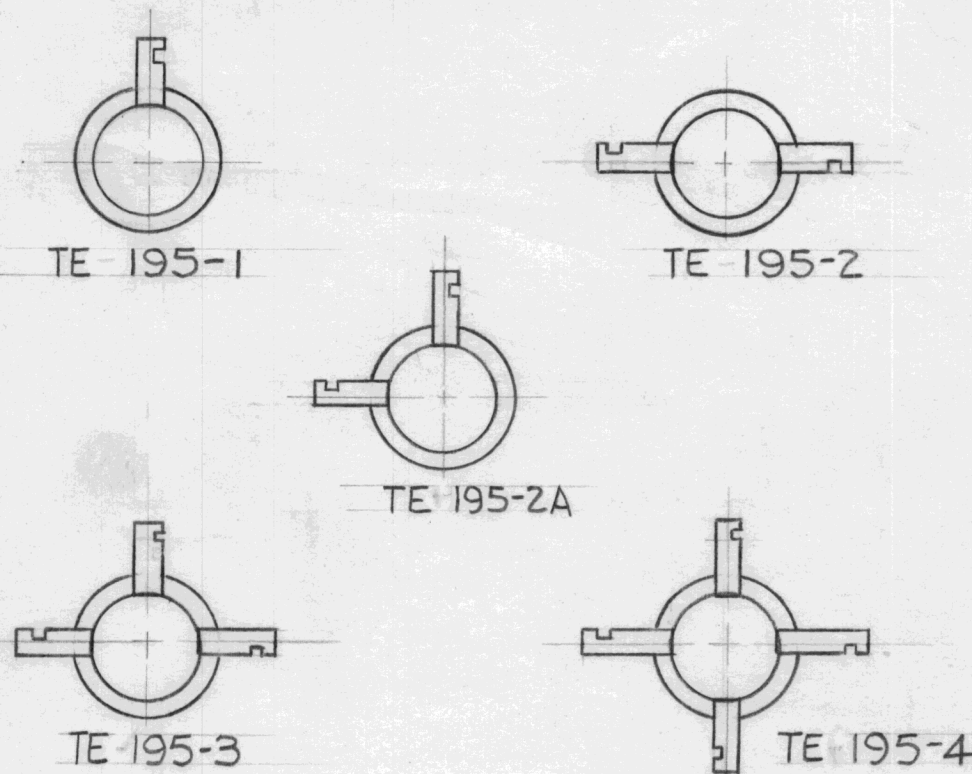
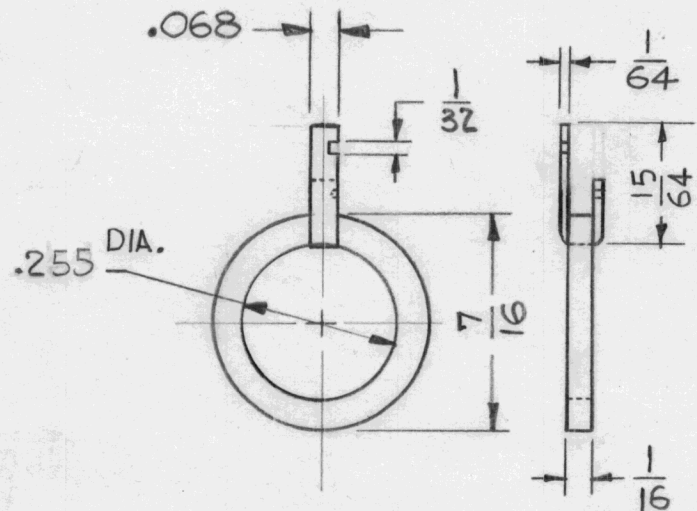
DATE

7-2-64

TE-195

D

TYPES AVAILABLE



NOTE: PURCHASE TE195-4 ONLY AND MODIFY AS REQUIRED.

CAMBRIDGE THERMIONIC CORP. PT. NO. 1696- OR EQUIV.

ID	DESCRIPTION	DATE	CH. NO.	DRAFTS	CHECKER	ENG. APP.	REQ.	ITEM	PART NO.	DESCRIPTION	SYMBOL
D	.255 DIA. WAS .263	12.2.66	17383	WHD	QC/B	QC				<b>THE TECHNICAL MATERIEL CORP.</b> MAMARONECK, NEW YORK TERMINAL COLLAR SILICONE FIBREGLAS	D
C	ADDED PURCH. NOTE	7-21-66	16591	RME	QC/B						
B	DIM. .263 WAS .255	2-5-64	10841	A.M.	T.R.						
A	DIM. .255 WAS .263	11-12-63	10363		M/T						
SYM											
UNLESS OTHERWISE SPECIFIED: DIMENSIONS ARE IN INCHES TOLERANCES ON FRAC. ± 1/64 DEC. ± .005 ANGLES ± 1/2°							SCALE: 5401-167(1696)		DRAWN: RUIZZO CHECKED: [Signature] FINAL APPROVAL: BP		
MAXIMUM ALLOWABLE TOLERANCES HAVE BEEN DETERMINED AND ANY DEVIATIONS WILL BE CAUSE FOR REJECTION. REMOVE ALL BURRS AND SHARP EDGES							TYPE & TEMPER	HEAT TREAT. SPEC.	ELEC. DES. APP. J. ANGER MECH. DES. APP.		TE-195

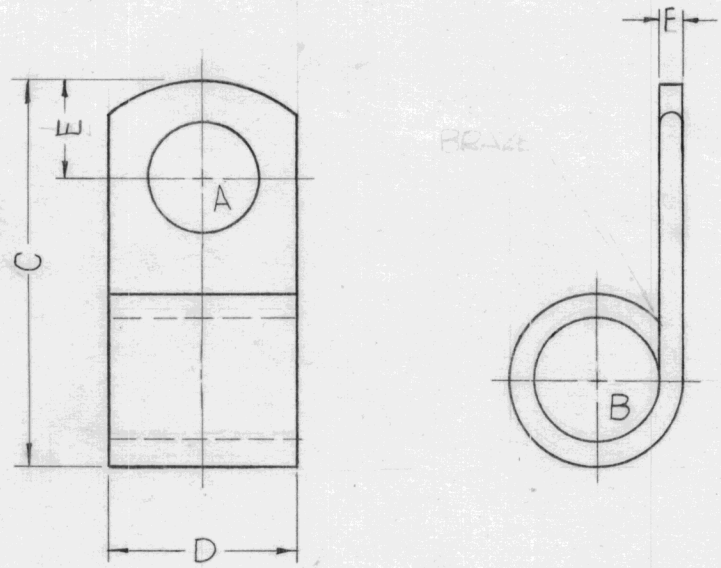


THE CONTENTS OF THIS DRAWING ARE THE EXCLUSIVE PROPERTY OF THE TECHNICAL MATERIEL CORP. ITS UNAUTHORIZED USE FOR REPRODUCTION IN WHOLE OR IN PART IS STRICTLY FORBIDDEN.

REQ. PER UNIT	USED ON		
	MODEL	ASS'Y. NO.	DATE
	STANDARD		6-21-63

TE-199

(A)



TOL. ± 1/32

TMC NO.	MFG. PART NO.	STUD SIZE A	DIMENSIONS				
			B	C	D	E	F
TE-199-1	T&E M 27530	1/2	5/8 MAX	2	1	1/2	1/8

SYMBOL		DESCRIPTION		DATE	CH. NO.	DRAFTS	CHECKER	ENG. APP.	REQ. ITEM	PART NO.	F. BUDETTI	DESCRIPTION	SYMBOL
A	O	OH CHART: A, B, C WERE HOLE DIM. (-1) PAI WAS T&E, M250; DIM. UPD'D; TOL. AD.		4-15-65	13823	2L	JCB					THE TECHNICAL MATERIEL CORP. MAMARONECK. NEW YORK	
		ORIGINAL RELEASE FOR PRODUCTION		5-13-64	O	A.M.						LUG FLAG, SOLDERLESS	
UNLESS OTHERWISE SPECIFIED DIMENSIONS ARE IN INCHES AND INCLUDE CHEMICALLY APPLIED OR PLATED FINISHES		SCALE											
DECIMALS .X ± .05 .XX ± .01 .XXX ± .005		FRACTIONS ± 1/64 ANGLES ± 0° 30'		CODE C		S401-35		ELECTRO TINNED		SRG aa RDC		ELEC. DES. APP. MECH. DES. APP.	
TOLERANCES								FINISH & SPEC. NO.		DRAWN 208		CHECKED 12/12/63	
												TE-199 (A)	