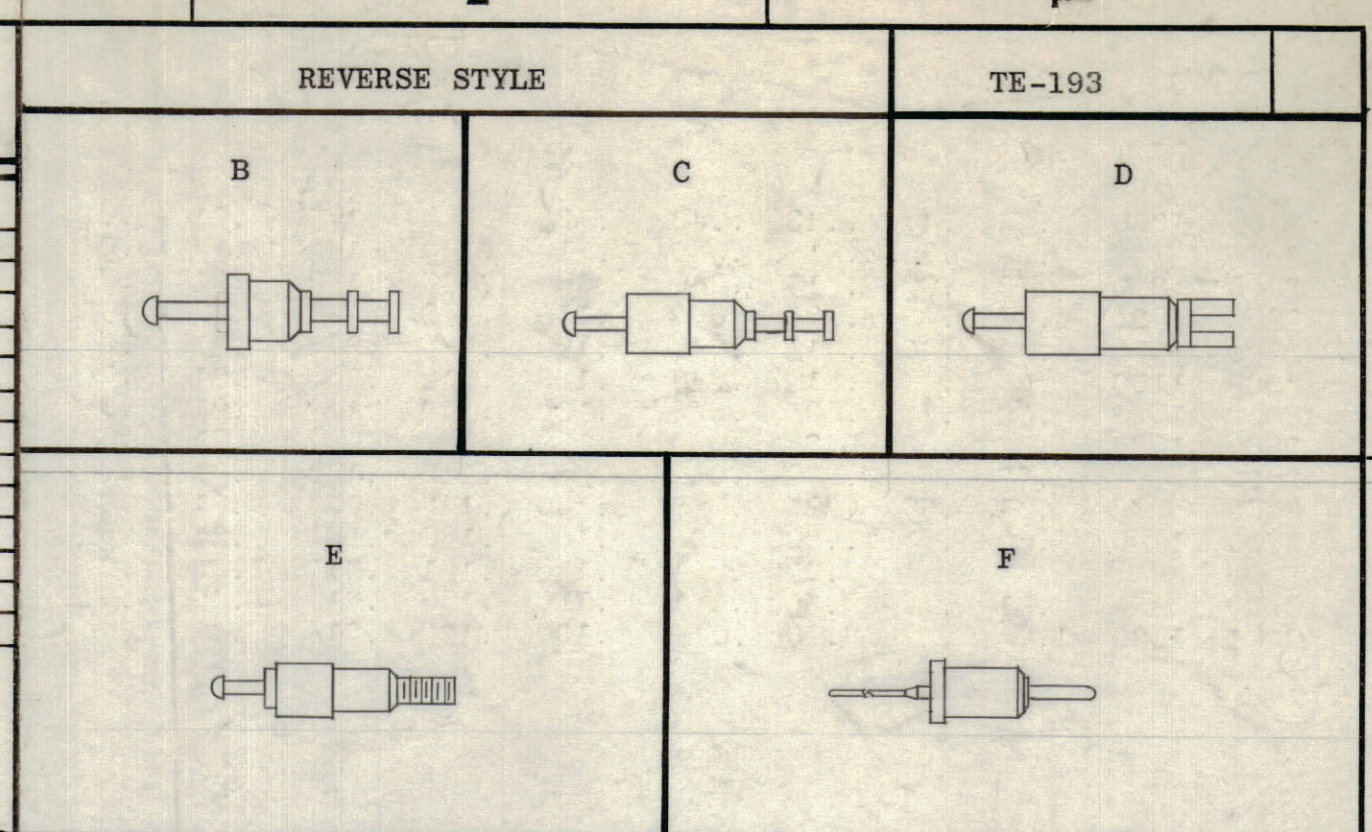


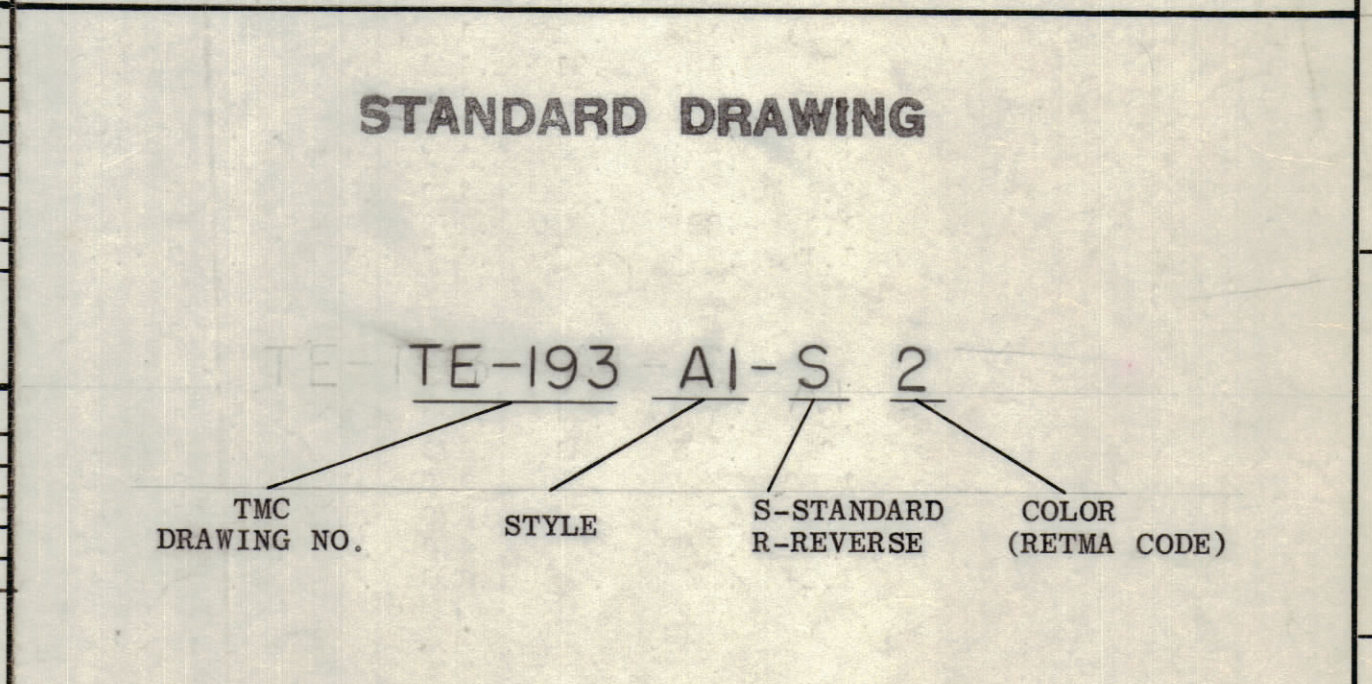
STANDARD STYLE	TMC PART NO.	MFG. "A" PART NO.	MFG. "B" PART NO.	VOLTAGE		CAP. uuf		A	B	C	D	E	F	G
				SEA LEVEL	50000 FEET	CHASSIS	THK							
				.074	.050									
	TE-193-A1	F-140	FT-SM-1L2 P60	2900	1300	.55	.47	.443	.040	.100	.148	.172	.210	.040
	TE-193-A2	F-141	FT-SM-2C6 P60	2900	765	.59	.50	.410	.050	.110	.148	.172	.147	.040
	TE-193-A3	F-150	FT-SM-1 P60	3200	890	.73	.62	.515	.040	.100	.148	.172	.210	.040
	TE-193-A4	F-151	FT-SM-2C4 P60	3200	935	.57	.48	.535	.050	.110	.148	.172	.210	.040
	TE-193-A5	F-152	FT-SM-4 P60	3200	935	.54	.46	.515	.040	.100	.179	.200	.210	.040
	TE-193-A6	F-153	FT-SM-5 P60	2980	1100	.69	.59	.515	.040	.100	.218	.250	.210	.040
	TE-193-A7	F-154	FT-SM-8 P60	3300	1060	.69	.59	.535	.040	.120	.148	.172	.210	.040
	TE-193-A8	F-155	FT-SM-9 P60	3060	1085	.57	.48	.535	.040	.132	.148	.172	.210	.040
	TE-193-A9	F-156	FT-SM-19 P60	3060	975	.63	.54	.535	.040	.160	.148	.172	.210	.040
	TE-193-A10	F-170	FT-SM-1L3 P60	3060	975	.71	.60	.725	.040	.100	.148	.172	.210	.040
	TE-193-A11	F-1110	FT-SM-1L4 P60	2700	1000	.60	.51	1.000	.040	.100	.148	.172	.210	.040
	TE-193-A12	F-1200	FT-SM-27 P60					2.000	.050	.110	.171	.218	.680	.040
	TE-193-A13	F-1250	FT-SM-10 P60	2980	955	.91	.77	2.500	.040	.100	.169	.219	.460	.040
	TE-193-A14	F-1251	FT-SM-10 L1 P60	2720	1020	1.06	.90	2.500	.040	.100	.169	.219	.460	.049
	TE-193-B1	F-240	FT-SM-1 TUR L2 P60	3300	850	.61	.52	.438	.040	.100	.148	.172	.210	.040
	TE-193-B2	F-250	FT-SM-1 TUR P60 *	3250	1020	.62	.53	.500	.040	.100	.148	.172	.210	.040
	TE-193-B3	F-251	FT-SM-1 TUR C4 P60	3250	935	.69	.59	.500	.040	.165	.148	.172	.210	.040
	TE-193-B4	F-252	FT-SM-4 TUR P60	3480	955	.46	.39	.500	.040	.100	.179	.200	.210	.040
	TE-193-B5	F-253	FT-SM-33 TUR P60	3300	955	.37	.31	.500	.040	.100	.234	.250	.210	.040
	TE-193-B6	F-254	FT-SM-2 TUR P60	3250	975	.63	.54	.531	.040	.100	.148	.172	.210	.040
	TE-193-B7	F-255	FT-SM-2 TUR C2 P60	3200	975	.54	.46	.531	.040	.125	.148	.172	.210	.040
	TE-193-B8	F-256	FT-SM-20 TUR P60	3060	1145	.50	.43	.531	.040	.100	.185	.218	.210	.040
	TE-193-B9	F-257	FT-SM-21 TUR P60	3200	975	.54	.46	.531	.040	.125	.185	.218	.210	.040
	TE-193-B10	F-258	FT-SM-26 TUR P60					.531	.040	.100	.264	.312	.210	.040
	TE-193-B11	F-260	FT-SM-22 TUR P60	3400	975	.58	.49	.609	.093	.125	.148	.172	.210	.040
	TE-193-C1	F-480	FT-990 DTUR P60					.836	.187	.165	.148	.172	.250	.040
	TE-193-C2	F-481	FT-995 DTUR P60					.836	.125	.230	.148	.172	.250	.040
	TE-193-C3	F-482	FT-1000 DTUR P60	5100	1315	.68	.58	.836	.187	.212	.171	.187	.250	.040
	TE-193-C4	F-483	FT-1050 DTUR P60					.836	.187	.212	.204	.250	.250	.040
	TE-193-C5	F-484	FT-1050 DTUR C3 P60					.836	.187	.212	.230	.250	.250	.040
	TE-193-D1	F-580	FT-1000 SL P60 *	4250	1400	.81	.69	.821	.187	.212	.171	.187	.078	.046
	TE-193-D2	F-581	FT-1000 SL 1L P60					.821	.187	.212	.171	.187	.046	.030
	TE-193-D3	F-590	FT-1500 SL P60 *	4850	1230	.81	.69	.947	.250	.275	.171	.187	.078	.046
	TE-193-D4	F-591	FT-1500 SL 1L P60					.947	.250	.275	.171	.187	.046	.030
	TE-193-D5	F-5110	FT-2000 SL P60 *					1.197	.375	.400	.171	.187	.078	.046
	TE-193-D6	F-5111	FT-2000 SL 1L P60					1.197	.375	.400	.171	.187	.046	.030
	TE-193-D7	F-5112	FT-2030 SL P60					1.197	.225	.550	.171	.187	.078	.046
	TE-193-D8	F-5113	FT-2035 SL P60					1.197	.250	.525	.171	.187	.078	.046
	TE-193-E1	F-680	FT-1000 T P60					.899	.187	.212	.171	.187	.281	4-36
	TE-193-E2	F-681	FT-1000 T1 P60					.899	.187	.212	.171	.187	.281	4-40
	TE-193-E3	F-6100	FT-1500 T P60					1.024	.250	.275	.171	.187	.281	4-36
	TE-193-E4	F-6101	FT-1500 T1 P60					1.024	.250	.275	.171	.187	.281	4-40
	TE-193-E5	F-6120	FT-2000 T P60					1.274	.375	.400	.171	.187	.281	4-36
	TE-193-E6	F-6121	FT-2000 T1 P60					1.274	.375	.400	.171	.187	.281	4-40
	TE-193-F1	F-790	FT-M-2L2 P60	3700	1060	.69	.59	.906	.046	.287	.185	.218	.250	.050
	TE-193-F2	F-7150	FT-M-2L4 P60					1.531	.046	.287	.185	.218	.250	.050
	TE-193-F3	F-7200	F-7200 P60	2980	1106	1.03	.88	2.083	.046	.287	.185	.218	.250	.050



COLOR CODE

COLOR	DIGIT	COLOR	DIGIT
Black	0	Green	5
Brown	1	Blue	6
Red	2	Violet	7
Orange	3	Gray	8
Yellow	4	White	9

- INSTALLATION PROCEDURES
- Punch or drill mounting hole approximately .012 less than body mounting diameter "D."
  - Countersink 60° included angle to "D" diameter when chassis is over .040 thick.
  - Countersink 90° included angle to "D" diameter when chassis is under .040 thick.



NOTE: 1. Add letter "R" to Mfg. Part No. for reverse construction. (RF-140 Mfg. "A") (FT-SM-1 TUR P60 R Mfg. "B")

\* Indicates available in reverse construction.

A = S-401-144  
B = S-401-148

SYM	ZONE	DESCRIPTION	DATE	CH. NO.	DRAFTS	CHECKER	ENG. APP.
UNLESS OTHERWISE SPECIFIED:							
DIMENSIONS ARE IN INCHES			SCALE				
TOLERANCES ON FRACTIONS ± 1/64			MAXIMUM ALLOWABLE TOLERANCES HAVE BEEN DETERMINED AND ANY DEVIATIONS WILL BE CAUSE FOR REJECTION. REMOVE ALL BURRS & SHARP EDGES				
DECIMALS ± .005							
ANGLES ± 1/2°							
REQ. PER UNIT		MODEL	SECTION	ASSY. NO.	DATE		
USED ON							

REQ. ITEM	PART NO.	DESCRIPTION	SYMBOL
THE TECHNICAL MATERIEL CORP. MAMARONECK, NEW YORK			
STOCK SIZE			
Insulation: Virgin Teflon		Stud: Brass	
TERMINAL, FEEDTHROUGH TEFLON INSULATED			
MATERIAL		DRAWN: W.S. CHECKED: J.L.B. FINAL APPROVAL: B.P.	
TYPE & TEMPER		HEAT TREAT. SPEC.	
Silver Plate		.0003	
FINISH & SPEC. NO.		ELEC. DES. APP. MECH. DES. APP. SHEET OF	
		TE-193	