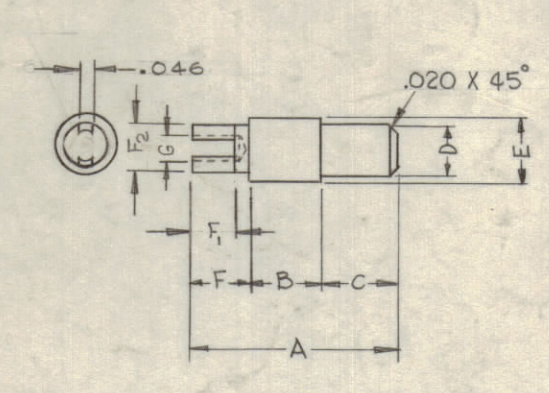
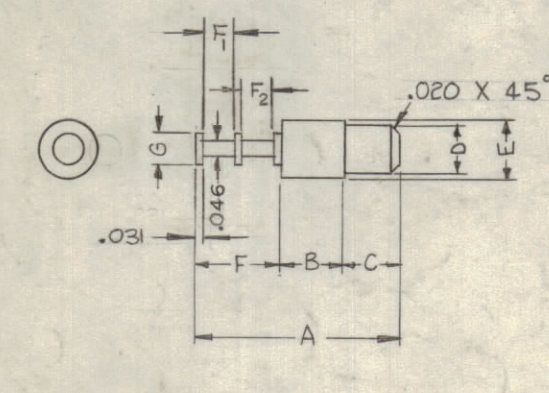
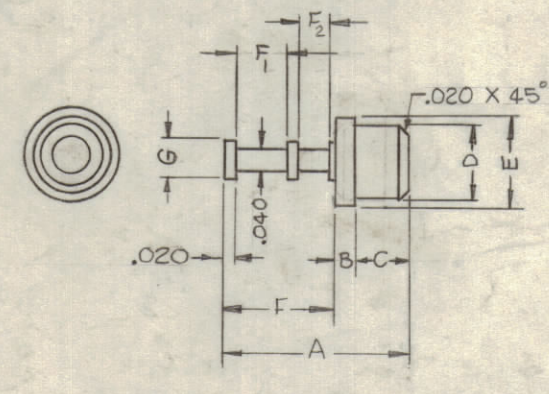


STANDARD STYLE	TMC PART NO.	MFG. "A" PART NO.	MFG. "B" PART NO.	VOLTAGE		CAPACITANCE		A	B	C	D	E	F	F1	F2	G
				SEA LEVEL	50000 FEET	uuf										
						CHASSIS THK .074	.050									
" A "	TE-192-A1	S-230	ST-SM-1TUR-P60*	2890	1020	.41	.35	.350	.040	.100	.148	.172	.210	.100	.050	.080
	TE-192-A2	S-231	ST-SM-1TUR-C2-P60	2890	935	.36	.31	.375	.040	.125	.148	.172	.210	.100	.050	.080
	TE-192-A3	S-234	ST-SM-4TUR-P60*	3230	975	.36	.31	.350	.040	.100	.179	.200	.210	.100	.050	.080
	TE-192-A4	S-235	ST-SM-21TUR-P60*	3140	1275	.36	.30	.375	.040	.125	.185	.218	.210	.100	.050	.080
	TE-192-A5	S-236	ST-SM-25TUR-P60					.334	.040	.140	.148	.172	.154	.046	.048	.093
	TE-192-A6	S-240	ST-SM-22TUR-P60	4250	1445	.45	.38	.428	.093	.125	.148	.172	.210	.100	.050	.080
	TE-192-A7	S-241	ST-SM-29TUR-P60					.455	.040	.165	.148	.172	.250	.093	.097	.093
	TE-192-A8	S-250	ST-SM-19TUR-C2-P60	2720	1060	.37	.31	.500	.040	.250	.148	.172	.210	.100	.050	.080
" B "	TE-192-B1	S-440	ST-250	4400	1445	.46	.39	.431	.125	.150	.165	.187	.156	.046	.050	.093
	TE-192-B2	S-441	ST-1000-P60	5600	1615	.47	.40	.493	.187	.150	.165	.187	.156	.046	.050	.093
	TE-192-B3	S-450	ST-250-L2-P60	4900	1615	.58	.49	.522	.125	.150	.165	.187	.250	.093	.097	.093
	TE-192-B4	S-451	ST-250-L3-P60	4250	1400	.71	.60	.556	.125	.150	.165	.187	.281	.093	.095	.125
	TE-192-B5	S-452	ST-1000-L2-P60	5600	1275	.55	.47	.584	.187	.150	.165	.187	.250	.093	.097	.093
	TE-192-B6	S-453	ST-1500-P60	6300	3060	.41	.35	.556	.250	.150	.165	.187	.156	.046	.050	.093
	TE-192-B7	S-460	ST-1000-L3-P60	5270	1615	.60	.51	.616	.187	.150	.165	.187	.281	.093	.095	.125
	TE-192-B8	S-480	ST-2000-P60	7225	2380	.30	.25	.831	.400	.150	.165	.187	.281	.093	.095	.125
	TE-192-B9	S-490	ST-2500-P60					.968	.500	.187	.215	.250	.281	.093	.095	.125
	TE-192-B10	S-4120	ST-4000-P60					1.268	.800	.187	.215	.250	.281	.093	.095	.125
" C "	TE-192-C1	S-540	ST-250-SL-P60	3740	1485	.50	.43	.478	.125	.150	.171	.187	.203	.156	.148	.078
	TE-192-C2	S-550	ST-1000-SL-P60					.540	.187	.150	.171	.187	.203	.156	.148	.078
	TE-192-C3	S-560	ST-1500-SL-P60					.603	.250	.150	.171	.187	.203	.156	.148	.078
	TE-192-C4	S-570	ST-2000-SL-P60					.753	.400	.150	.171	.187	.203	.156	.148	.078
	TE-192-C5	S-580	ST-2500-SL-P60					.890	.500	.187	.217	.250	.203	.156	.148	.078
	TE-192-C6	S-5110	ST-4000-SL-P60					1.190	.800	.187	.217	.250	.203	.156	.148	.078



REVERSE STYLE			TE-192
A	B	C	

- INSTALLATION PROCEDURE**
- Punch or drill mounting hole approximately .012 less than body diameter "D."
  - Countersink 60° included angle to "D" diameter when chassis is over .040 thick.
  - Countersink 90° included angle to "D" diameter when chassis is under .040 thick.

**COLOR CODE**

Color	Digit	Color	Digit
Black	0	Green	5
Brown	1	Blue	6
Red	2	Violet	7
Orange	3	Gray	8
Yellow	4	White	9

**STANDARD DRAWING**

TE-192 A1 S 2

TMC DRAWING NO.

STYLE AND SIZE

S-STANDARD R-REVERSE

COLOR (RETMA)

**NOTE:**

- Add "R" to manufacturers number for reverse construction.  
(S-130 R) Code A  
(R ST-SM-1TUR) Code B
- Add color code suffix for color required. (Retma)

A = S-401-144  
B = S-401-148

SYMBOL	ZONE	DESCRIPTION	DATE	CH. NO.	DRAFTS	CHECKER	ENG. APP.
		UNLESS OTHERWISE SPECIFIED:	SCALE				
		DIMENSIONS ARE IN INCHES	MAXIMUM ALLOWABLE TOLERANCES HAVE BEEN DETERMINED AND ANY DEVIATIONS WILL BE CAUSE FOR REJECTION. REMOVE ALL BURRS & SHARP EDGES				
		TOLERANCES ON					
		FRACTIONS ± 1/64	DECIMALS ± .005		ANGLES ± 1/2°		

REQ. UNIT	ITEM	PART NO.	DESCRIPTION	SYMBOL
			THE TECHNICAL MATERIEL CORP. MAMARONECK, NEW YORK	
			TERMINAL, STUD	
			TEFLON INSULATED	
			W. S. DRAWN	
			CHECKED	
			FINAL APPROVAL	
			TE-192	
			FINISH & SPEC. NO.	
			ELEC. DES. APP.	
			MECH. DES. APP.	
			SHEET	OF