

IF IT IS FOUND NECESSARY TO CHANGE ANY TOLERANCE OR OTHER DETAIL SPECIFIED ON THIS DRAWING NOTIFY THE PURCHASER PROMPTLY.

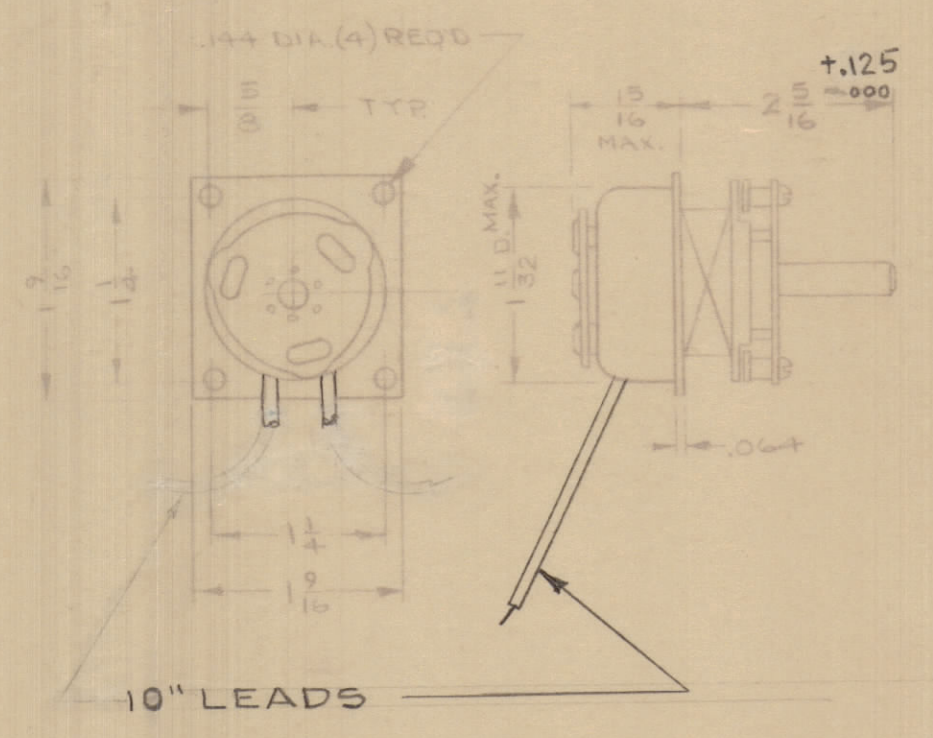
MAXIMUM ALLOWABLE TOLERANCES HAVE BEEN DETERMINED AND DEVIATIONS WILL BE CAUSE FOR REJECTION. REMOVE ALL BURRS AND SHARP EDGES.

ISSUE	CHANGED FROM	DATE	CN NO	DRAFT	CHECK	ENG APP
A	REV PER CEMN	30-5-67	235	RD		
B	REV TO CEMN	16/6/67	245	AP		

ISSUE	ITEM	CHANGE FROM	DATE	CN NO	DRAFT	CHECKER	ENG APP
2		RELEASED FOR PROD	MAR 6/67	195	RF		

REV	ITEM	PART NO	DESCRIPTION	SYMBOL

DIMENSIONS FOR REFERENCE ONLY



General Specifications

Location of Solenoid (viewed from solenoid end): CW X  
 No. of sections: 1  
 No. of positions: 12  
 Angle of throw: 30° WITH DETENT

Type Mounting: Flange X Foot  
 Solenoid Connections: WIRE LEADS

Contacts:  
 Shorting type, Sections ONE SPECIAL HOMING TAB & ONE HOMING NOTCH  
 Non-shorting, Sections  
 Silver plated Brass  
 Silver alloy X  
 Wafer material: Other: Bakelite X  
 Finishing: Comm. X 50hr. or 200hr. salt spray  
 Op. temp.: 0-100°C  
 Wafer type:

Electrical Specs.

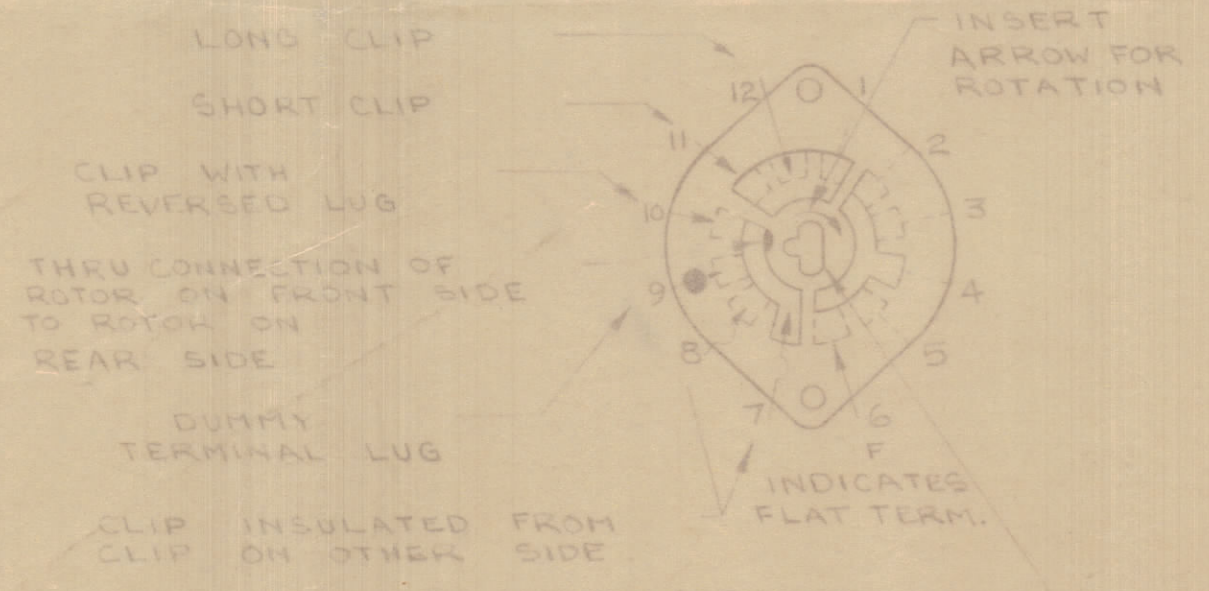
Current rating: Carry 5-7 amps resistive max. 115 VAC & 220 VAC  
 Break 2.4 volts: amp resistive max.  
 Break 11.5 volts: amp resistive max.  
 Dielectric Strength: 1000v clip to clip, 500v insulated clips back to back.

Coil Specifications

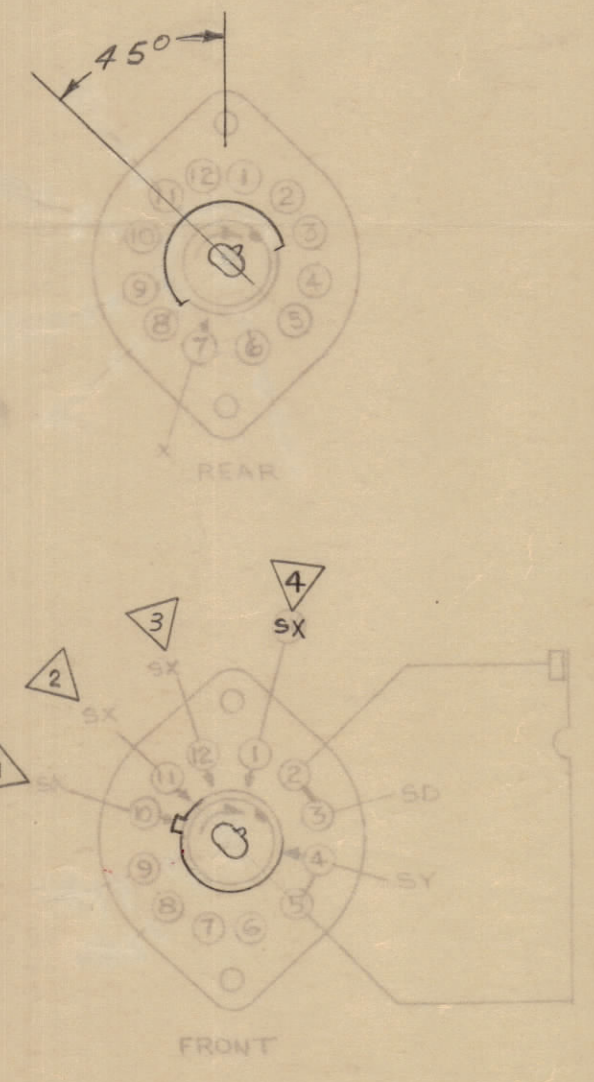
Solenoid Size 3B  
 Coil resistance @ 20° C. 195 Ω ± 10% (EACH COIL)  
 Voltage: 115 VAC OR 230 VAC RECTIFIED  
 Gross Starting Torque: 20 (0.2-0 lb inches (REF.) 2  
 Duty Cycle: 1/10 at 105VDC  
 Rotary Stroke angle: 30°  
 Dielectric Strength: 1200 VMS (COILS TO CASE FOR 5 SECONDS)  
 Dust Cover: None

Notes:

1. View wafers from solenoid end of switch.
2. Rear side of wafer viewed as if looking through wafers, from solenoid end.
3. Rotation is in direction of arrow viewed from solenoid end.
4. Wafers shown in no. 1 or first operating position.



NOTE  
 X = SHORT CLIP  
 Y = LONG CLIP  
 D = DUMMY  
 ⊗ = INSULATED CLIP  
 ⊙ = INSULATED CLIP  
 S = STRAIGHT



SZ10002 B

SYMBOLS USED IN MARKING PRINT

MFGR. 5101-281  
 MFGR NO: RS 342-HF 3

TMC (Canada) LIMITED		OTTAWA ONTARIO	
SWITCH ROTARY SOLENOID			
12 POSITION			
RPL			
DRAWN		ELEC. DES. APP.	
CHECKED		APPROVED	
CODE		DATE	
5210002		B	

TOLERANCES		SCALE NTS	
ALL DIM	FRACTIONAL DIM ± 1/32	DRILL, PUNCH, COMMERCIAL STOCK	SIZES AND MANUFACTURERS
OTHERS	AS SHOWN	TOLERANCES ARE NOT INCLUDED.	

MODEL	PART NO.	APP. NO.	DATE
	053/66		MF 23/67