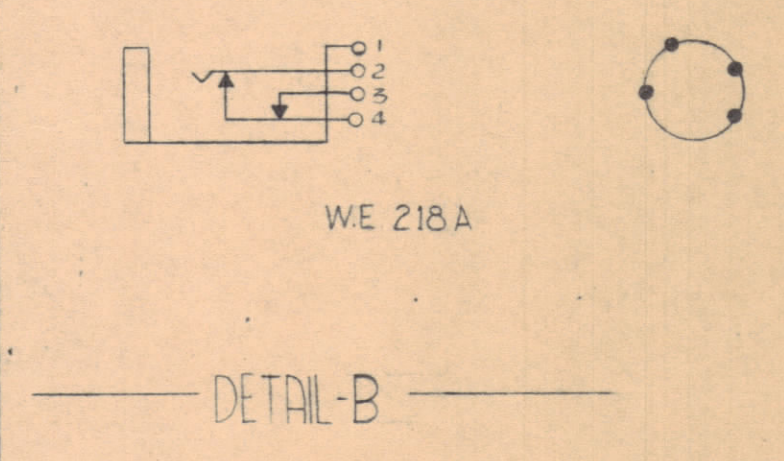
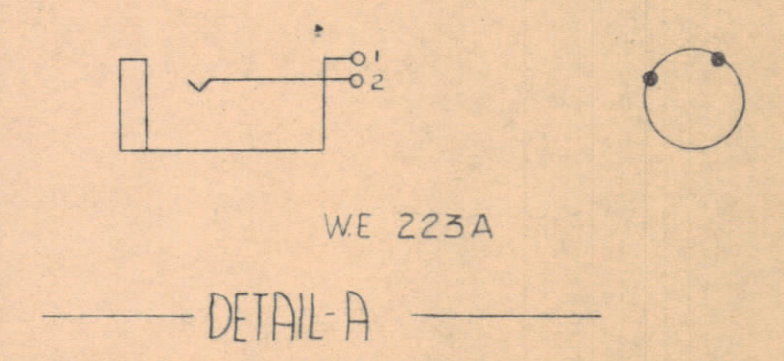


NOTES:  
 J1-31 PIN CONNECTOR AMPHENOL  
 48-00-R18-31P (MS 24254-20P)  
 P3-24 PIN PLUG AMPHENOL  
 67-06E18-24S



*Orig. in Jersey*  
 AUG 13 1962

1	AP913-L10	MOUNTING BRACKET WITH COVER, ALLEN
1	AP912	JACK MOUNTING STRIP, ALLEN
4	WE 223A	JACK, WESTERN ELECTRIC CO.
2	WE 218A	JACK, WESTERN ELECTRIC CO.
1	P3 67-06E18-24S	24 PIN PLUG, AMPHENOL
1	J1 48-00-R18-31P	31 PIN RECEPTACLE (MS-24254-20P) AMPHENOL

REQ. PER UNIT	ITEM	PART NO.	DESCRIPTION	SYMBOL
<b>THE TECHNICAL MATERIEL CORP.</b> MAMARONECK, NEW YORK				
STOCK SIZE				
WRING DIAGRAM CABINET 2-12				
MATERIAL				
S. Granfilippo				
		DRAWN		CHECKED
		TYPE & TEMPER		HEAT TREAT. SPEC.
		FINISH & SPEC. NO.		ELEC. DES. APP.
		USED ON		MECH. DES. APP.
		DATE		SY-1313
		ASS'Y. NO.		SHEET OF
		MODEL		DEFIANCE NO. 1020 38833
		SECTION		
		DATE		

SYM	ZONE	DESCRIPTION	DATE	CH. NO.	DRAFTS	CHECKER	ENG. APP.
UNLESS OTHERWISE SPECIFIED:			SCALE NONE				
DIMENSIONS ARE IN INCHES			MAXIMUM ALLOWABLE TOLERANCES HAVE BEEN DETERMINED AND ANY DEVIATIONS WILL BE CAUSE FOR REJECTION. REMOVE ALL BURRS & SHARP EDGES				
TOLERANCES ON FRACTIONS ± 1/64			DECIMALS ± .005			ANGLES ± 1/2°	