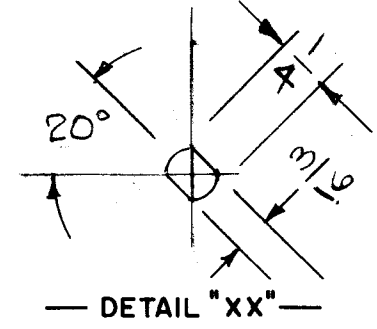


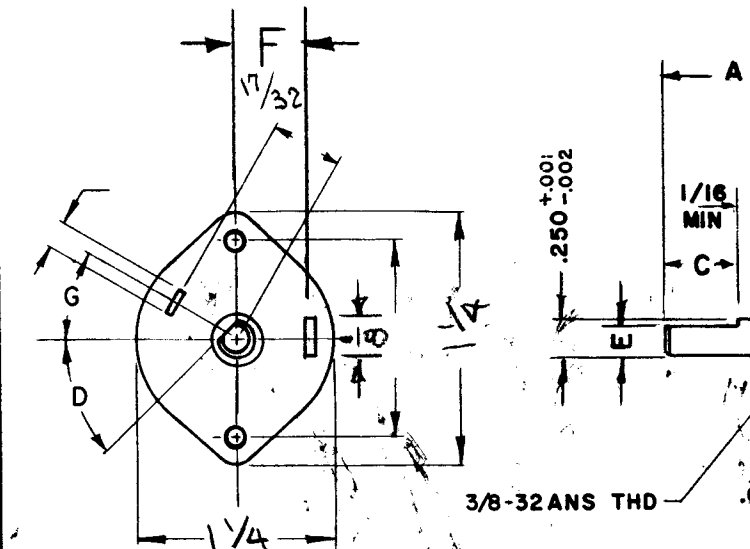
DESG.	DIMENSION	TOL.	REMARK
A	7/8	±.015	SHAFT LG. FROM MTG. SURFACE
B	3/8	±.005	BUSH. LG.
C		±.015	FLAT LG. (IF REQ.)
D		±2°	FLAT ANGLE (IF REQ.)
E		±.002	FLAT (IF REQUIRED)
F	17/32	±.010	KEY LOCATION (IF REQ.)
G			KEY LOCATION (IF REQ.)
M	3/16	±.010	
N	1/16	±.093	REAR SCR. EXT.
Q	3/16	±.031	REAR SHAFT EXT.
R	1/2		1st SEC. SPACING

TMC PART NUMBER: SW-8006 STAMP ON FRONT PLATE  
 FRONT PLATE SHAPE: ROUND  OR OBLONG   
 MECHANICAL SPECIFICATIONS:  
 NUMBER OF SECTIONS - 4  
 NUMBER OF POSITIONS - 2  
 ANGLE OF THROW - 60°  
 CONTACTS:  
 SHORTING TYPE, SECTIONS   
 NON SHORTING TYPE, SECTIONS   
 SILVER PLATED BRASS, SECTIONS   
 SILVER ALLOY, SECTIONS   
 WAFERS:  
 BAKELITE, SECTIONS   
 CERAMIC, SECTIONS   
 MYCALEX, SECTIONS  4  
 IMPREGNATION (IF REQ.)   
 FINISH REQUIREMENTS:  
 ARMY  NAVY  COMMERCIAL   
 SALT TEST (IF REQ.)   
 HARDWARE, TO BE SUPPLIED BY MANUFACTURER:  
 1 QUAN. 3/8 -32 NUTS 1/2 ACROSS FLATS  
 MATERIAL BRASS PLATING NICKEL  
 1 QUAN. INTERNAL TOOTH LOCKWASHER  
 MATERIAL BRASS PLATING NICKEL  
 ELECTRICAL SPECIFICATIONS:  
 MAXIMUM RATED VOLTAGE \_\_\_\_\_  
 MAXIMUM RATED CURRENT \_\_\_\_\_

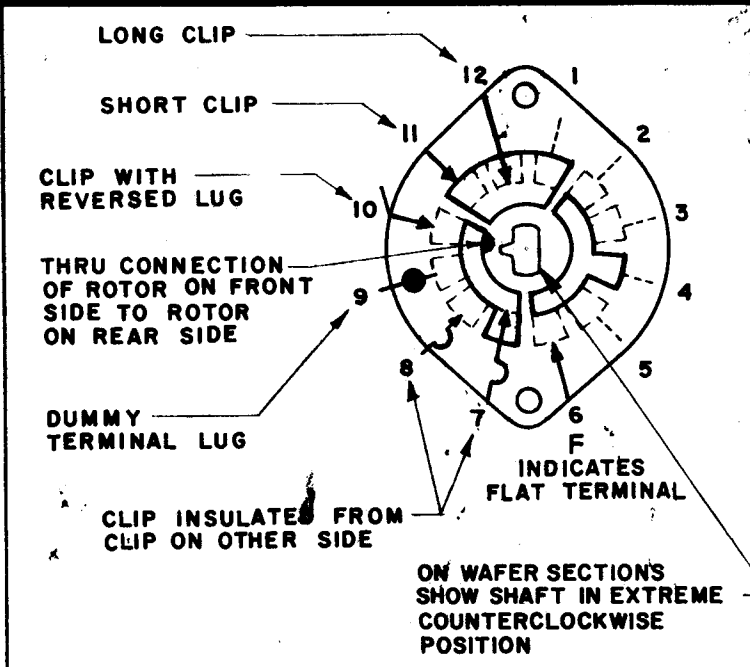
NOTE: FOR S401-13 ("F" TYPE) SWITCHES, THE SHAFT POSITION MUST BE SPECIFIED ON DETAIL "XX" BELOW.



NOTES



NOTE: OBLONG TYPE FRONT PLATE SHOWN, (SEE MECHANICAL SPECIFICATION)

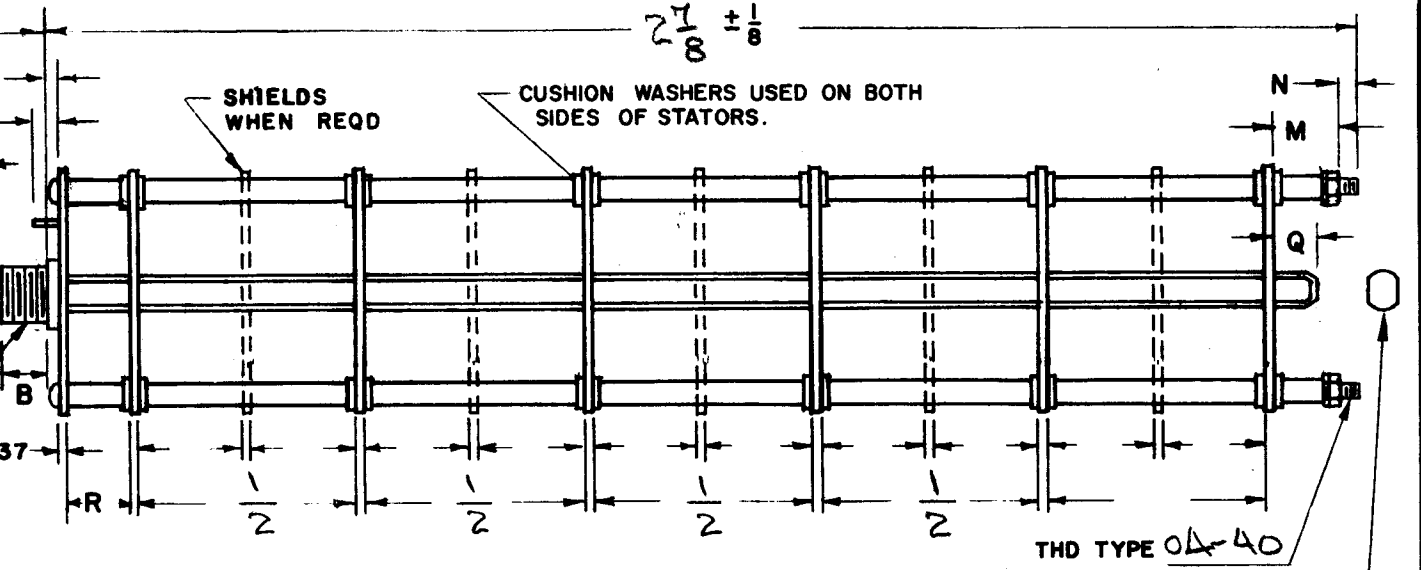


SYMBOLS USED IN MARKING PRINT

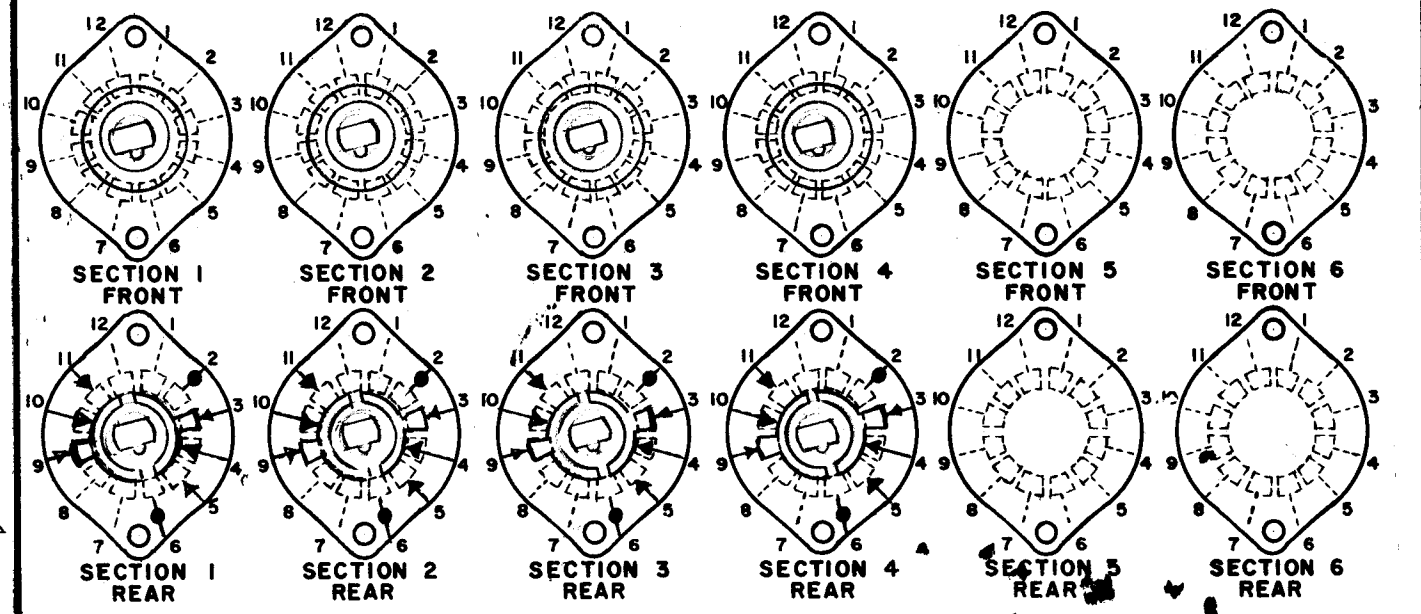
1	AX8044	
QTY./UNIT	MODEL USED ON	ASS'Y. NO.
SCALE	CODE	

THE CONTENTS OF THIS DRAWING ARE THE EXCLUSIVE PROPERTY OF THE TECHNICAL MATERIEL CORP. ITS UNAUTHORIZED USE OR REPRODUCTION IN WHOLE OR IN PART IS STRICTLY FORBIDDEN.

REVISIONS						
SYM	DESCRIPTION	DATE	E.M.N. NO.	DRAFT	CHKD	APPD
Ø	ORIGINAL RELEASE FOR PRODUCTION	5-19-69	4	GE		



FRONT AND REAR SECTIONS VIEWED FROM FRONT OR KNOB END OF SWITCH IN EXTREME COUNTERCLOCKWISE POSITION. SEE NOTE (DET. "XX")



## SWITCH, ROTARY - 12 POINT TYPE

MATERIAL		THE TECHNICAL MATERIEL CORP. MAMARONECK, NEW YORK			
FINISH		TITLE SWITCH, ROTARY			
UNLESS OTHERWISE SPECIFIED DIMENSIONS ARE IN INCHES AND INCLUDE CHEMICALLY APPLIED OR PLATED FINISHES		DRAWN CD DEAN	DATE 12-27-67	FINAL APPROV. [Signature]	DATE 5-22-69
DECIMALS .X ± .05 .XX ± .01 .XXX ± .005		ELECT. DES. [Signature]		DATE SW8006	
FRACTIONS ± 1/64 ANGLES ± 0° 30'		MECH. DES. [Signature]		DATE	
TOLERANCES		SHEET		REV. LTR.	