

DESG.	DIMENSION	TOL.	REMARK
A	7/8	±.015	SHAFT LG. FROM MTG. SURFACE
B	3/8	±.005	BUSH. LG.
C		±.015	FLAT LG. (IF REQ.)
D		±2°	FLAT ANGLE (IF REQ.)
E		±.002	FLAT (IF REQUIRED)
F	17/32	±.010	KEY LOCATION (IF REQ.)
G			KEY LOCATION (IF REQ.)
M	3/16	±.010	
N	1/16	±.093	REAR SCR. EXT.
Q	3/16	±.031	REAR SHAFT EXT.
R	5/8		1st SEC. SPACING

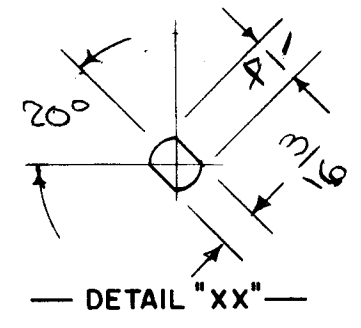
TMC PART NUMBER: SW-8005 STAMP ON FRONT PLATE
 FRONT PLATE SHAPE: ROUND OR OBLONG
 MECHANICAL SPECIFICATIONS:
 NUMBER OF SECTIONS- 2
 NUMBER OF POSITIONS- 4
 ANGLE OF THROW- 60°
 CONTACTS:
 SHORTING TYPE, SECTIONS _____
 NON SHORTING TYPE, SECTIONS
 SILVER PLATED BRASS, SECTIONS
 SILVER ALLOY, SECTIONS _____

WAFERS:
 BAKELITE, SECTIONS _____
 CERAMIC, SECTIONS _____
 MYCALEX, SECTIONS _____ TWO
 IMPREGNATION (IF REQ.) _____
 FINISH REQUIREMENTS:
 ARMY NAVY COMMERCIAL
 SALT TEST (IF REQ.) _____

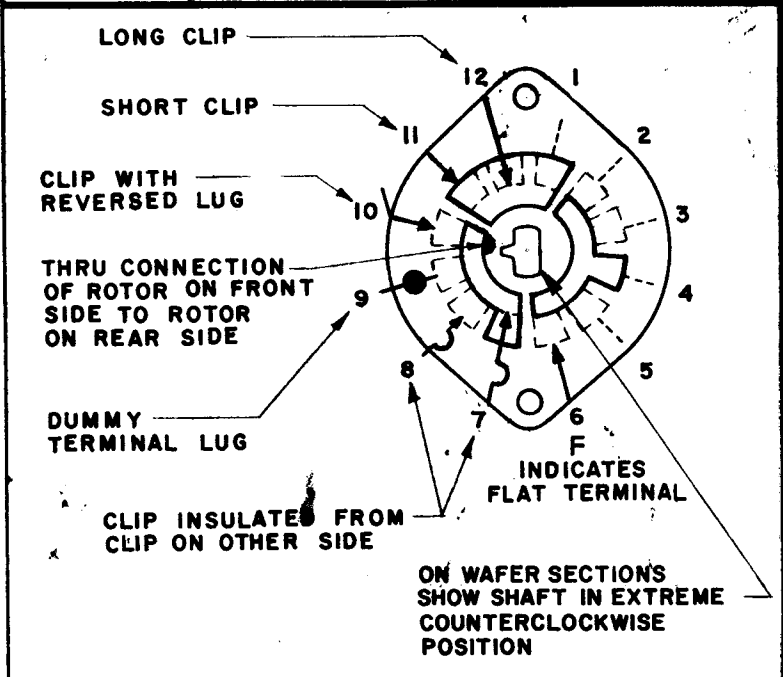
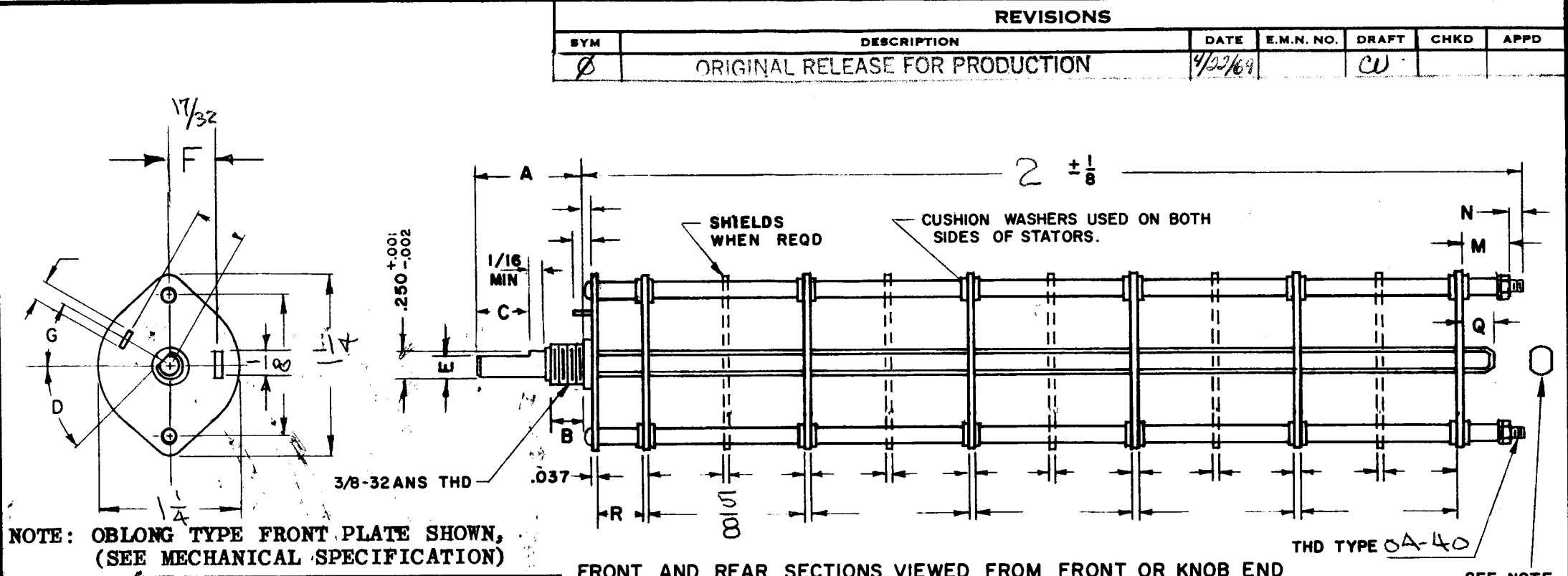
HARDWARE, TO BE SUPPLIED BY MANUFACTURER:
 1 QUAN. 3/8-32 NUTS 1/2 ACROSS FLATS
 MATERIAL BRASS PLATING NICKEL
 1 QUAN. INTERNAL TOOTH LOCKWASHER
 MATERIAL BRASS PLATING NICKEL

ELECTRICAL SPECIFICATIONS:
 MAXIMUM RATED VOLTAGE _____
 MAXIMUM RATED CURRENT _____

NOTE:
 FOR S401-13 ("F" TYPE) SWITCHES, THE SHAFT POSITION MUST BE SPECIFIED ON DETAIL "XX" BELOW.



NOTES

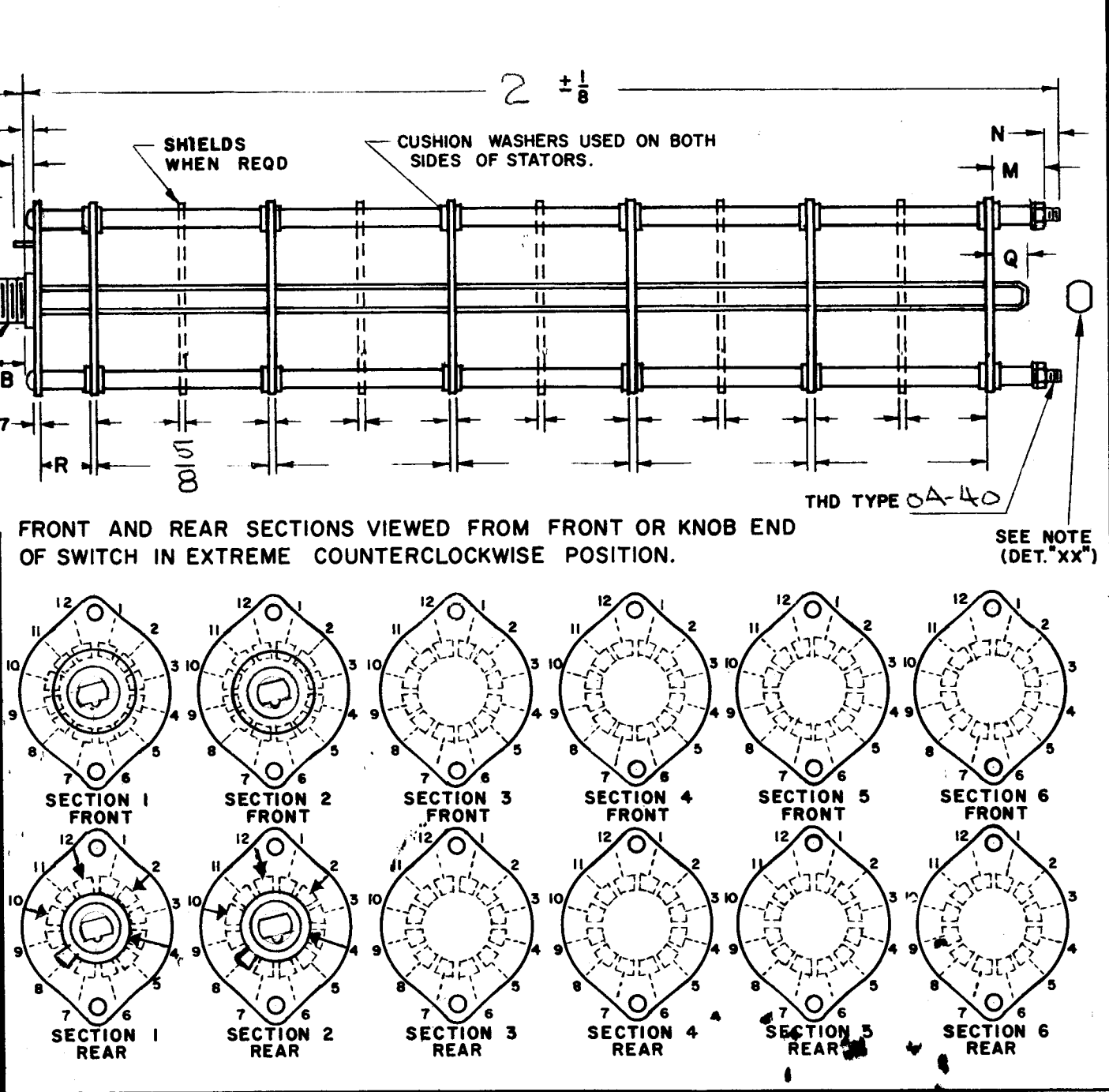


SYMBOLS USED IN MARKING PRINT

2	AX8022	
Q'TY./UNIT	MODEL USED ON	ASS'Y. NO.
SCALE	CODE	

THE CONTENTS OF THIS DRAWING ARE THE EXCLUSIVE PROPERTY OF THE TECHNICAL MATERIEL CORP. ITS UNAUTHORIZED USE OR REPRODUCTION IN WHOLE OR IN PART IS STRICTLY FORBIDDEN.

REVISIONS						
SYM	DESCRIPTION	DATE	E.M.N. NO.	DRAFT	CHKD	APPD
Ø	ORIGINAL RELEASE FOR PRODUCTION	4/22/69		CU		



SWITCH, ROTARY - 12 POINT TYPE

MATERIAL THE TECHNICAL MATERIEL CORP. MAMARONECK, NEW YORK

FINISH TITLE SWITCH, ROTARY

UNLESS OTHERWISE SPECIFIED DIMENSIONS ARE IN INCHES AND INCLUDE, CHEMICALLY APPLIED OR PLATED FINISHES	DRAWN C.D. PEAN	DATE 12-7-67	FINAL APPROVAL AM	DATE 4/22/69
DECIMALS .X ± .05 .XX ± .01 .XXX ± .005	CHECKED	DATE	DATE	DATE
FRACTIONS ± 1/64 ANGLES ± 0° 30'	ELECT. DES. PN	DATE	DATE	DATE
TOLERANCES	MECH. DES.	DATE	DATE	DATE
			SW 8005	Ø
			SHEET	REV. LTR.