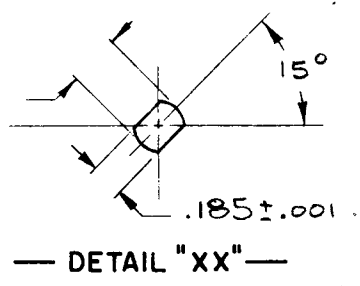


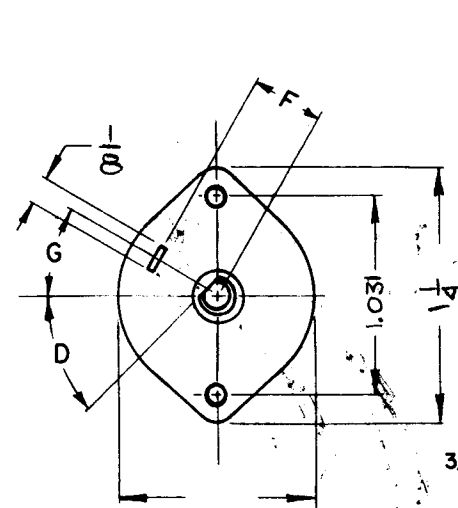
DESG.	DIMENSION	TOL.	REMARK
A	3/4	±.015	SHAFT LG. FROM MTG. SURFACE
B	1/4	±.005	BUSH. LG.
C	-	±.015	FLAT LG. (IF REQ.)
D	-	±2°	FLAT ANGLE (IF REQ.)
E	-	±.002	FLAT (IF REQUIRED)
F	17/32	±.010	KEY LOCATION (IF REQ.)
G	180°		KEY LOCATION (IF REQ.)
M	5/32	±.010	
N	1/8	±.093	REAR SCR. EXT.
Q	2 5/8	±.031	REAR SHAFT EXT.
R	.250		1st SEC. SPACING

TMC PART NUMBER: SW-572 STAMP ON FRONT PLATE
 FRONT PLATE SHAPE: ROUND OR OBLONG
 MECHANICAL SPECIFICATIONS:
 NUMBER OF SECTIONS- 3
 NUMBER OF POSITIONS- 12
 ANGLE OF THROW- 30°
 CONTACTS:
 SHORTING TYPE, SECTIONS 3
 NON SHORTING TYPE, SECTIONS
 SILVER PLATED BRASS, SECTIONS 3
 SILVER ALLOY, SECTIONS
 WAFERS:
 BAKELITE, SECTIONS 3
 CERAMIC, SECTIONS
 MYCALEX, SECTIONS
 IMPREGNATION (IF REQ.)
 FINISH REQUIREMENTS:
 ARMY NAVY COMMERCIAL ✓
 SALT TEST (IF REQ.)
 HARDWARE, TO BE SUPPLIED BY MANUFACTURER:
 1 QUAN. 3/8 -32 NUTS 1/2 ACROSS FLATS
 MATERIAL STEEL PLATING CADMIUM
 1 QUAN. 3/8 INTERNAL TOOTH LOCKWASHER
 MATERIAL STEEL PLATING CADMIUM
 ELECTRICAL SPECIFICATIONS:
 MAXIMUM RATED VOLTAGE 110VAC
 MAXIMUM RATED CURRENT 1.0 AMP BREAK
 50 AMP CARRY

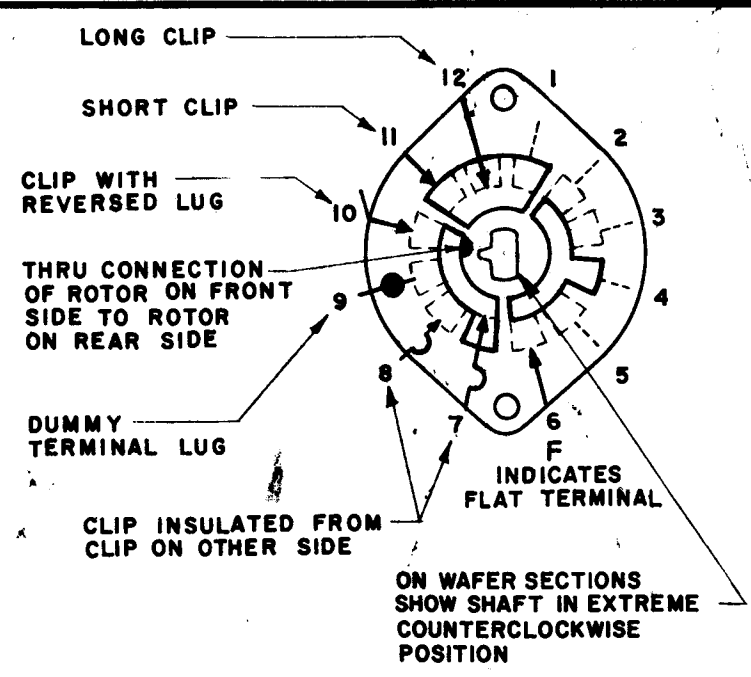
NOTE:
 FOR S401-13 ("F" TYPE) SWITCHES, THE SHAFT POSITION MUST BE SPECIFIED ON DETAIL "XX" BELOW.



NOTES



NOTE: OBLONG TYPE FRONT PLATE SHOWN, (SEE MECHANICAL SPECIFICATION)

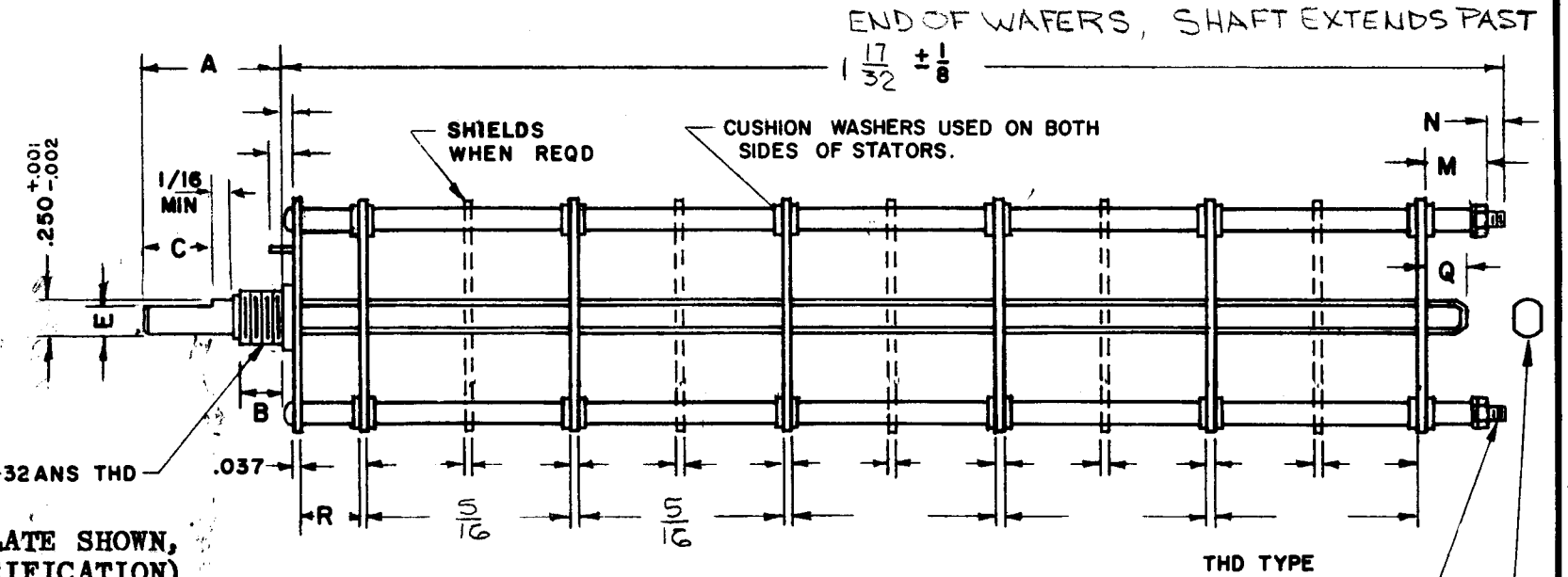


SYMBOLS USED IN MARKING PRINT

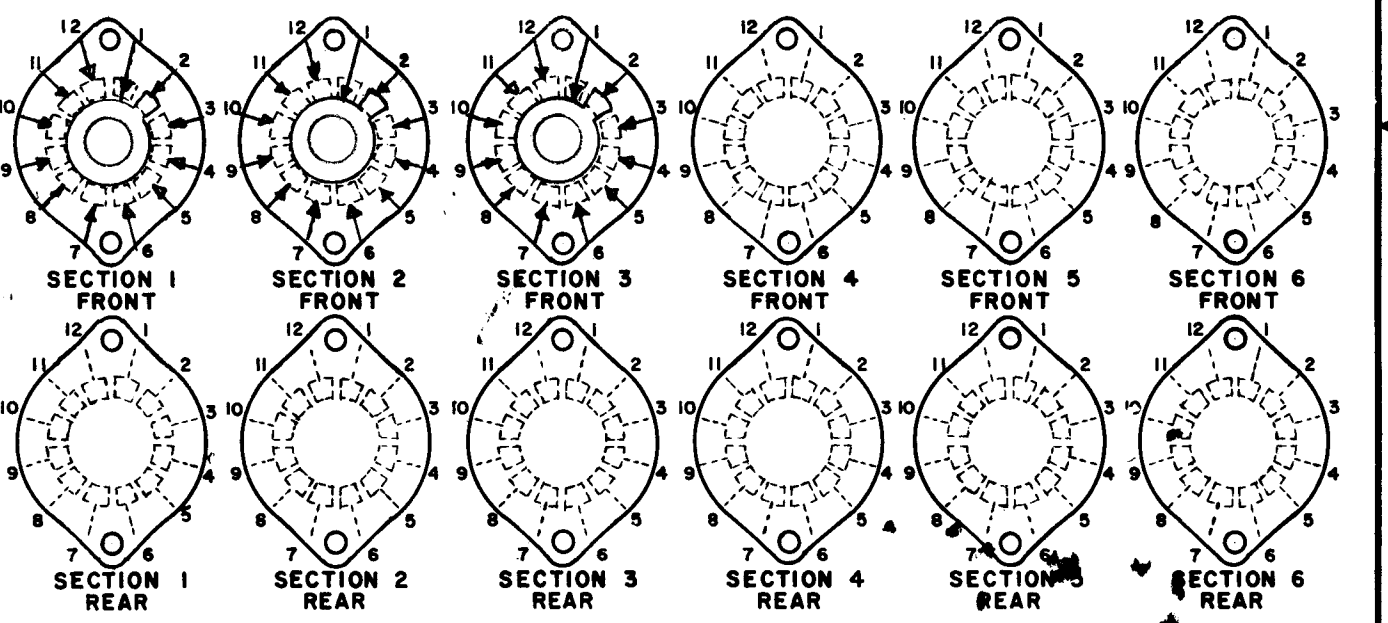
1	CHG	
QTY / UNIT	MODEL USED ON	ASS'Y NO.
APPLICATION		
	CODE	

NOTICE TO PERSONS RECEIVING THIS DRAWING
 THE TECHNICAL MATERIEL CORPORATION claims proprietary right in the material disclosed hereon. This drawing is issued in confidence for engineering information only and may not be reproduced or used to manufacture anything shown hereon without permission from THE TECHNICAL MATERIEL CORPORATION to the user. This drawing is loaned for mutual assistance and is subject to recall at any time.

REVISIONS					
ZONE	LTR	DESCRIPTION	DATE	E.M.N.NO	APPD



FRONT AND REAR SECTIONS VIEWED FROM FRONT OR KNOB END OF SWITCH IN EXTREME COUNTERCLOCKWISE POSITION. SEE NOTE (DET. "XX")



SWITCH, ROTARY - 12 POINT TYPE

UNLESS OTHERWISE SPECIFIED DIMENSIONS ARE IN INCHES AND INCLUDE CHEMICALLY APPLIED OR PLATED FINISHES	FINAL APPROVAL	DATE
DECIMALS .X ± .05 .XX ± .01 .XXX ± .005	MECH. DES.	DATE
FRACTIONS 1/64 TOLS. ANGLES 0°-30'	ELECT. DES.	DATE
MATERIAL	CHECKED	DATE
FINISH	DRAWN PH	DATE 10-31-77

THE TECHNICAL MATERIEL CORP. MAMARONECK, NEW YORK			
ROTARY SWITCH S114 MODE			
SIZE B	CODE IDENT. NO. 82679	DWG NO. SW 572	ISSUE
SCALE	SHEET		OF