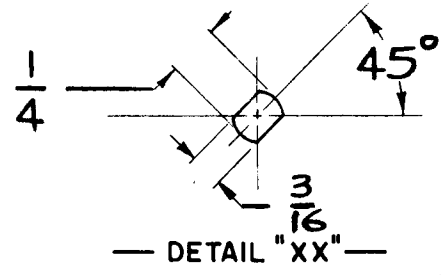


DESG.	DIMENSION	TOL.	REMARK
A	3/4	±.015	SHAFT LG. FROM MTG. SURFACE
B	3/8	±.005	BUSH. LG.
C	—	±.015	FLAT LG. (IF REQ.)
D	—	±2°	FLAT ANGLE (IF REQ.)
E	—	±.002	FLAT (IF REQUIRED)
F	—	±.010	KEY LOCATION (IF REQ.)
G	180°	—	KEY LOCATION (IF REQ.)
M	1/8	±.010	
N	1/8	±.093	REAR SCR. EXT.
Q	3/16	±.031	REAR SHAFT EXT.
R	1/4	—	1st SEC. SPACING

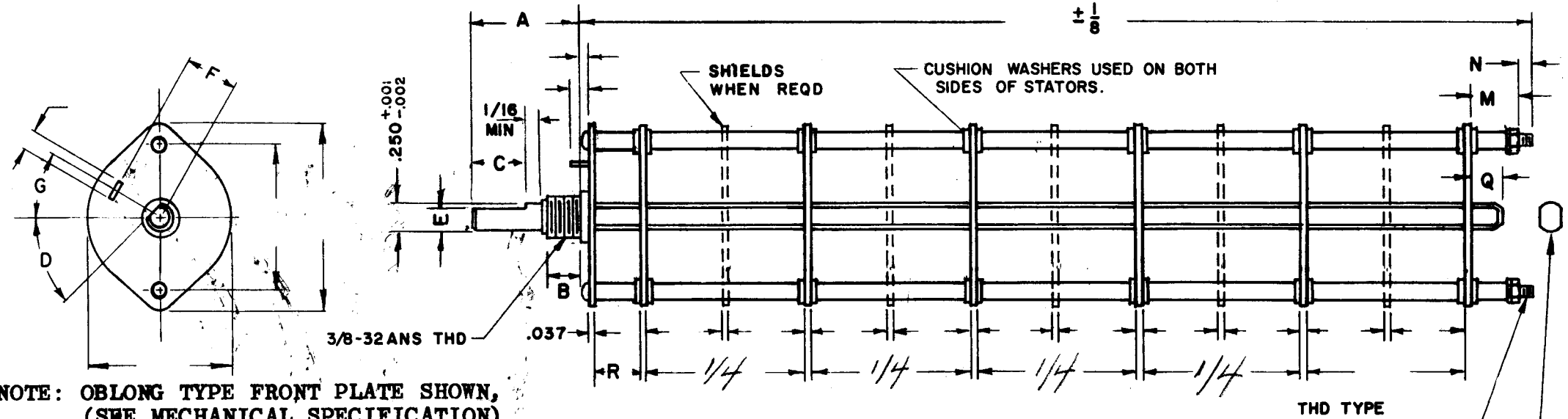
REVISIONS						
ZONE	LTR	DESCRIPTION	DATE	E.M.N.NO	DRAFT	CHKD
	Ø	ORIGINAL RELEASE	12/7/13		DV	

TMC PART NUMBER: SW- STAMP ON FRONT PLATE
FRONT PLATE SHAPE: ROUND ✓ OR OBLONG
MECHANICAL SPECIFICATIONS:
NUMBER OF SECTIONS- 5
NUMBER OF POSITIONS- 3
ANGLE OF THROW- 30°
CONTACTS:
SHORTING TYPE, SECTIONS _____
NON SHORTING TYPE, SECTIONS ALL
SILVER PLATED BRASS, SECTIONS ALL
SILVER ALLOY, SECTIONS _____
WAFERS:
BAKELITE, SECTIONS ALL
CERAMIC, SECTIONS _____
MYCALEX, SECTIONS _____
IMPREGNATION (IF REQ.) _____
FINISH REQUIREMENTS:
ARMY NAVY COMMERCIAL ✓
SALT TEST (IF REQ.) _____
HARDWARE, TO BE SUPPLIED BY MANUFACTURER:
1 QUAN. 3/8 -32 NUTS 1/2 ACROSS FLATS
MATERIAL STAINLESS PLATING PASSIVATE
1 QUAN. 3/8 INTERNAL TOOTH LOCKWASHER
MATERIAL STAINLESS PLATING PASSIVATE
ELECTRICAL SPECIFICATIONS:
MAXIMUM RATED VOLTAGE _____
MAXIMUM RATED CURRENT _____

NOTE:
FOR S401-13 ("F" TYPE) SWITCHES, THE SHAFT POSITION MUST BE SPECIFIED ON DETAIL "XX" BELOW.

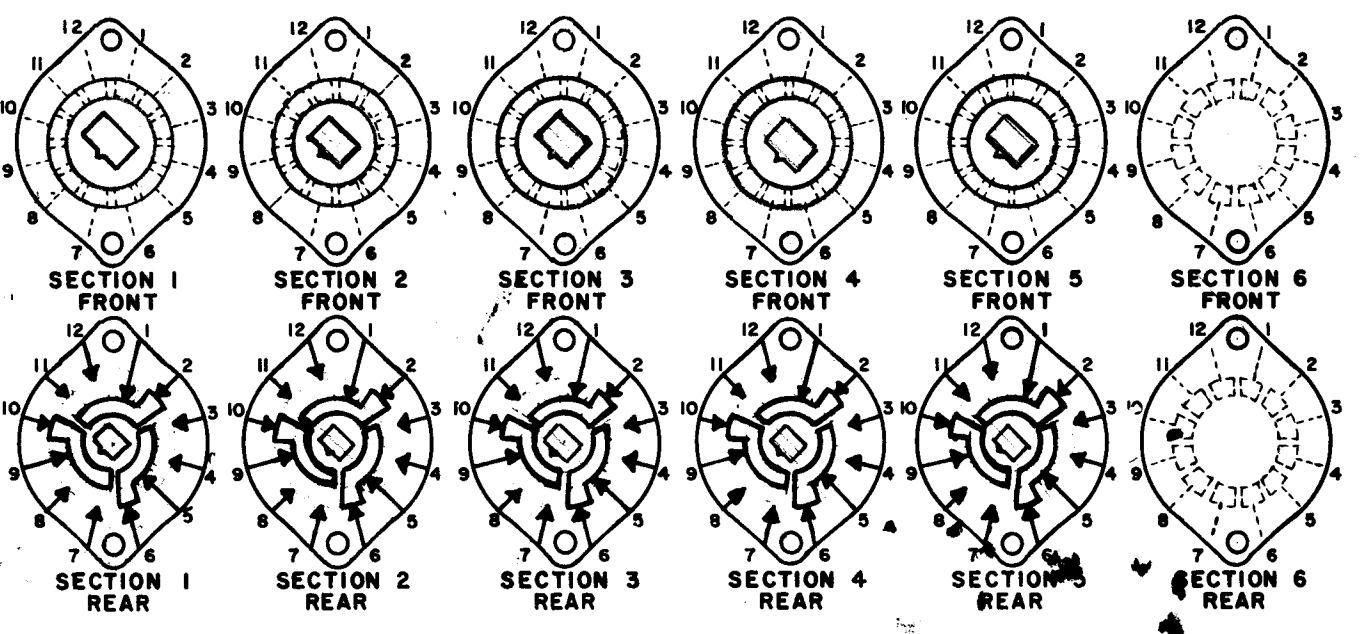
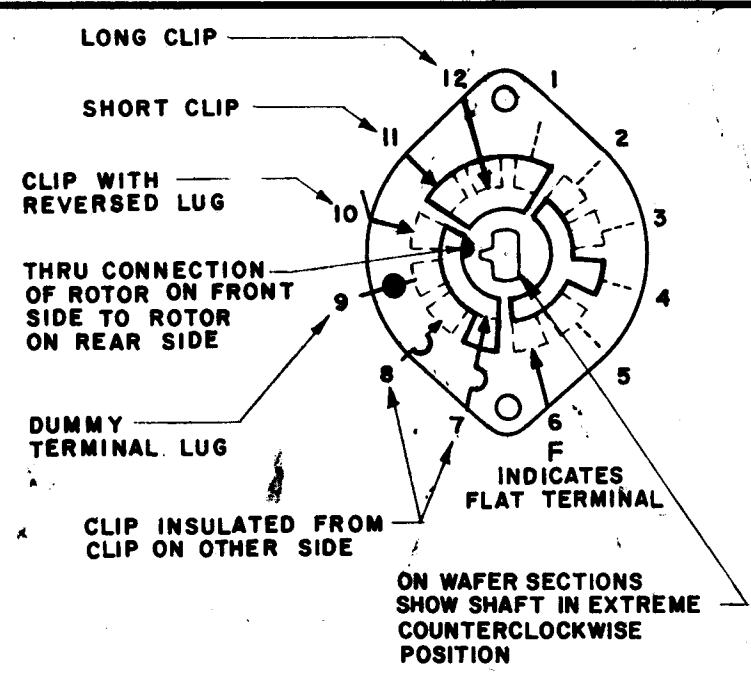


NOTES



NOTE: OBLONG TYPE FRONT PLATE SHOWN, (SEE MECHANICAL SPECIFICATION)

FRONT AND REAR SECTIONS VIEWED FROM FRONT OR KNOB END OF SWITCH IN EXTREME COUNTERCLOCKWISE POSITION. SEE NOTE (DET. "XX")



SYMBOLS USED IN MARKING PRINT

QTY 1/ UNIT	ATSA-3	ASS'Y NO.
	MODEL USED ON	
	APPLICATION	
	CODE	

NOTICE TO PERSONS RECEIVING THIS DRAWING
THE TECHNICAL MATERIEL CORPORATION claims proprietary right in the material disclosed hereon. This drawing is issued in confidence for engineering information only and may not be reproduced or used to manufacture anything shown hereon without permission from THE TECHNICAL MATERIEL CORPORATION to the user. This drawing is loaned for mutual assistance and is subject to recall at any time.

UNLESS OTHERWISE SPECIFIED DIMENSIONS ARE IN INCHES AND INCLUDE CHEMICALLY APPLIED OR PLATED FINISHES	FINAL APPROVAL	DATE
DECIMALS .X ± .05 .XX ± .01 .XXX ± .005	MECH. DES.	DATE
FRACTIONS 1/64 ANGLES 0° .30'	ELECT. DES.	DATE
MATERIAL	CHECKED	DATE
FINISH	DRAWN	DATE

THE TECHNICAL MATERIEL CORP. MAMARONECK, NEW YORK			
SWITCH, (AUTO, PRE POSITIONS, MANUAL)			
SIZE	CODE IDENT. NO.	DWG NO.	ISSUE
B	82679	SW-554	Ø
SCALE	SHEET		OF