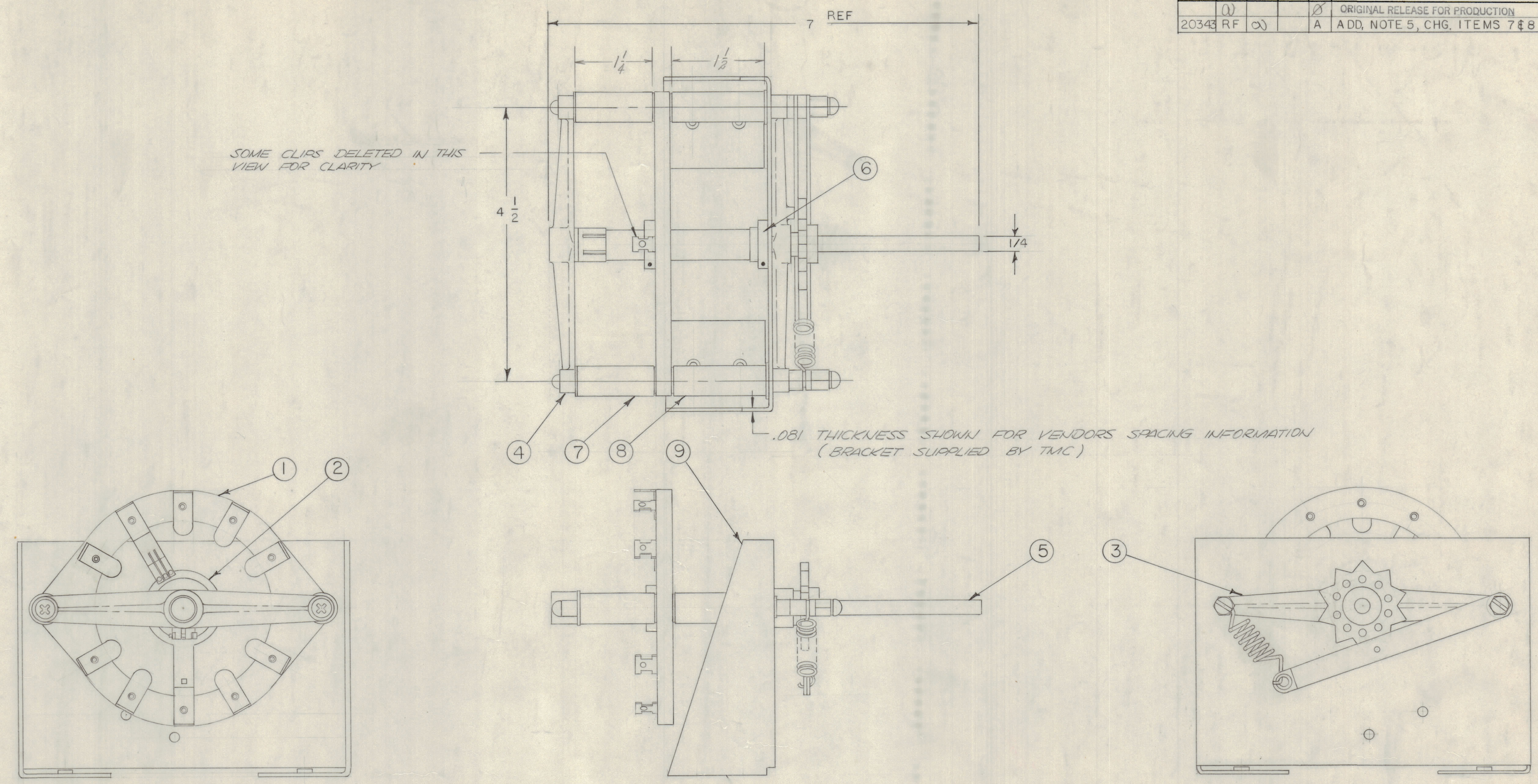


REVISIONS							
E.M.N.O	DRAFT	CHKD	ZONE	LTR	DESCRIPTION	DATE	APPROVED
	(1)				ORIGINAL RELEASE FOR PRODUCTION	3/23/71	PEL
20343	RF	(2)		A	ADD, NOTE 5, CHG. ITEMS 7 & 8 P.N.	5-5-71	PEL



- NOTES:**
- 13,000 V PEAK FLASHOVER AT 60 CPS.
 - 30 AMP CURRENT CARRYING CAPACITY.
 - CURRENT CARRYING MEMBERS SILVER PLATED.
 - COM SILVER CONTACT SHOES.
 - * VENDORS PART NUMBER

ORDER INFO: ORDER PER ITEMS; FOR SPARE PARTS
 ORDER SW 532- LESS ITEM 9 (FOR SWITCH LESS BKT)
 OR
 ORDER COMPLETE SWITCH(TMC SUPPLYING ITEM 9)

QTY. REQ.	ITEM	PART NO.	DESCRIPTION	SYMBOL
1	9	MS5245	BKT SWITCH MOUNTING	
2	8	*S14419-110	SPACER INSULATED 1 1/2*(SEE NOTE 5)	
2	7	*S14419-102	SPACER, INSULATED 1 1/4*(SEE NOTE 5)	
2	6	SW 532-6	CLAMP	
1	5	SW 532-5	SHAFT	
1	4	SW 532-4	SUPPORT BKT	
1	3	SW 532-3	DETENT, ARM & SUPPORT BKT	
1	2	SW 532-2	ROTOR MODEL 88	
1	1	SW 532-1	WAFER MODEL 88	

FINAL APPROVAL		DATE
E. BLUETTI		3/23/71

LIST OF MATERIAL		
MECH. DES. <i>[Signature]</i> DATE 3/24/71		
ELECT. DES. DATE		
CHECKED DATE		
DRAWN <i>EVANGELIST</i> DATE 3/23/71		
MATERIAL <i>S401-113 MODEL 88</i>		
FINISH		
SIZE	CODE IDENT NO.	DWG NO.
D	82679	SW 532
SCALE	SHEET OF	

BCT 10 KA		AX 700	
QTY / UNIT	MODEL USED ON	ASS'Y NO.	
APPLICATION			
CODE			
NOTICE TO PERSONS RECEIVING THIS DRAWING			
THE TECHNICAL MATERIEL CORPORATION claims proprietary right in the material disclosed hereon. This drawing is issued in confidence for engineering information only and may not be reproduced or used to manufacture anything shown herein without permission from THE TECHNICAL MATERIEL CORPORATION to the user. This drawing is loaned for mutual assistance and is subject to recall at any time.			

UNLESS OTHERWISE SPECIFIED DIMENSIONS ARE IN INCHES AND INCLUDE CHEMICALLY APPLIED OR PLATED FINISHES	
DECIMALS	FRACTIONS
.X ± .05	± 1/64
.XX ± .01	ANGLES ± 0° -30'
.XXX ± .005	