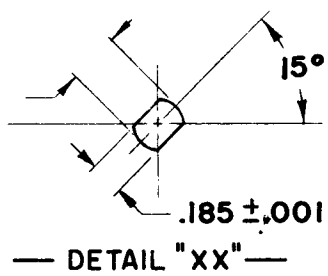


DESG.	DIMENSION	TOL.	REMARK
A	1-1/2	±.015	SHAFT LG. FROM MTG. SURFACE
B	3/8	±.005	BUSH. LG.
C		±.015	FLAT LG. (IF REQ.)
D		±2°	FLAT ANGLE (IF REQ.)
E		±.002	FLAT (IF REQUIRED)
F	17/32	±.010	KEY LOCATION (IF REQ.)
G	180°		KEY LOCATION (IF REQ.)
M	5/32	±.010	
N	1/8	±.093	REAR SCR. EXT.
Q	1/4	±.031	REAR SHAFT EXT.
R	1/4		1st SEC. SPACING

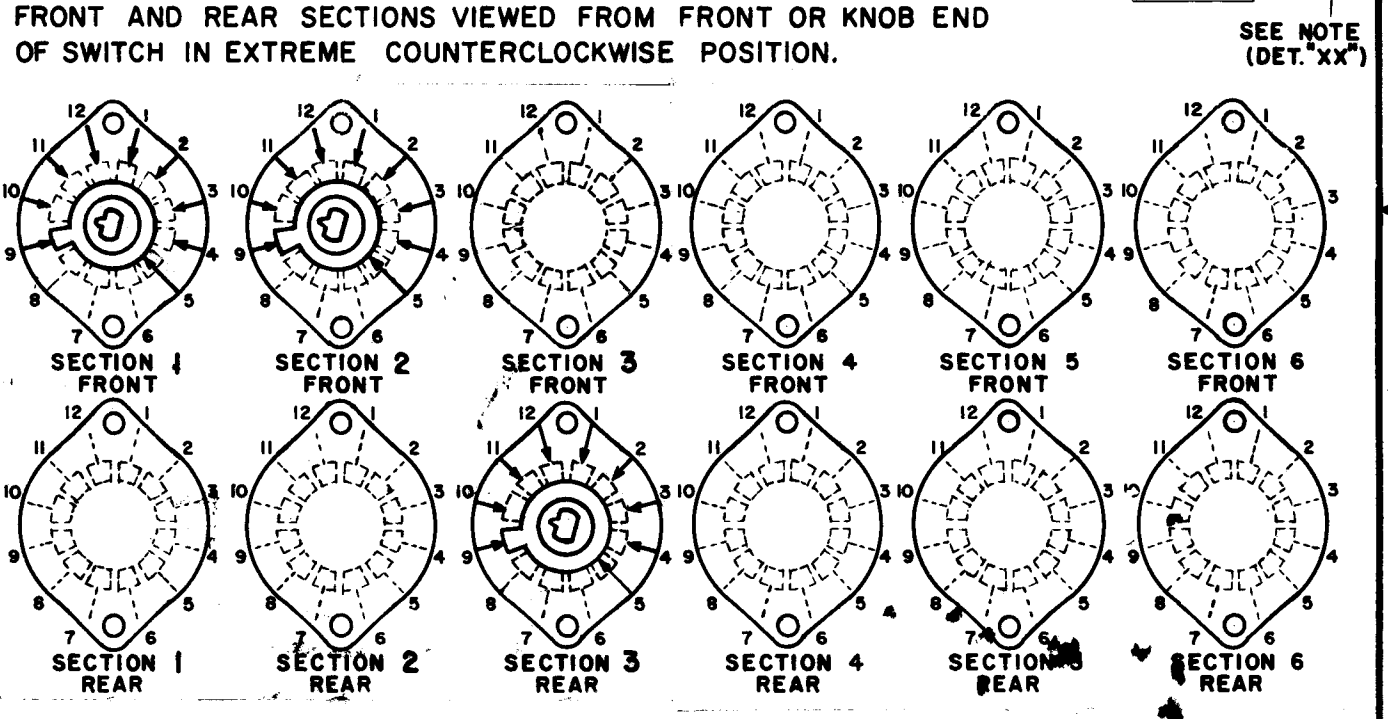
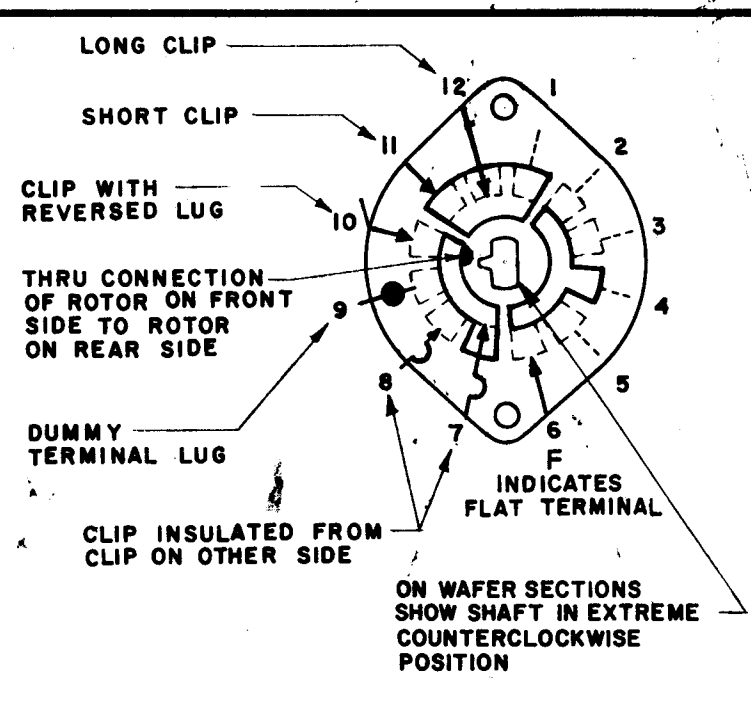
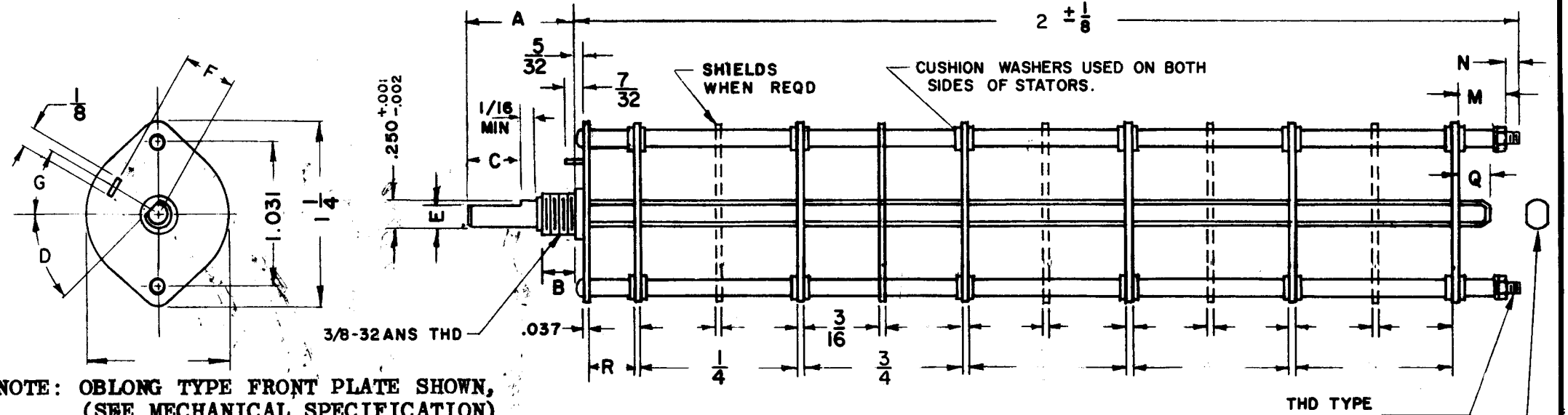
TMC PART NUMBER: SW-511 STAMP ON FRONT PLATE
FRONT PLATE SHAPE: ROUND X OR OBLONG
MECHANICAL SPECIFICATIONS:
NUMBER OF SECTIONS- 3
NUMBER OF POSITIONS- 8
ANGLE OF THROW- 30°
CONTACTS:
SHORTING TYPE, SECTIONS _____
NON SHORTING TYPE, SECTIONS ALL
SILVER PLATED BRASS, SECTIONS 1, 2, 3
SILVER ALLOY, SECTIONS 3
WAFERS:
BAKELITE, SECTIONS 1, 2, 3
CERAMIC, SECTIONS 3
MYCALEX, SECTIONS _____
IMPREGNATION (IF REQ.) _____
FINISH REQUIREMENTS:
ARMY NAVY COMMERCIAL X
SALT TEST (IF REQ.) _____
HARDWARE, TO BE SUPPLIED BY MANUFACTURER:
1 QUAN. 3/8 -32 NUTS ACROSS FLATS
MATERIAL PLATING
1 QUAN. 3/8 INTERNAL TOOTH LOCKWASHER
MATERIAL STEEL PLATING CADMIUM
ELECTRICAL SPECIFICATIONS:
MAXIMUM RATED VOLTAGE 110 VAC
MAXIMUM RATED CURRENT 1.0 AMP BREAK
1.0 AMP CARRY
NOTE:
FOR S401-13 ("F" TYPE) SWITCHES, THE SHAFT POSITION MUST BE SPECIFIED ON DETAIL "XX" BELOW.



NOTES

REVISIONS					
DESCRIPTION	DATE	E.M.N.NO	DRAFT	CHKD	APPD
X3 REV. & UPDATED	3/27/69	X3	KH		
Ø ORIG RELEASE FOR PROD	7/1/69		CV		

REVISIONS							
ZONE	LTR	DESCRIPTION	DATE	E.M.N.NO	DRAFT	CHKD	APPD
	X	EXP. RELEASE	1/14/68		K.H.		
	X1	REV. & UPDATED	1/13/69		K.H.		
	X2	1/2 DIM DELETED	1/31/69	X2			



SYMBOLS USED IN MARKING PRINT

POSE SWITCH, ROTARY - 12 POINT TYPE

1	MTRM-150	
QTY / UNIT	MODEL USED ON	ASS'Y NO.
APPLICATION		
	CODE	
NOTICE TO PERSONS RECEIVING THIS DRAWING THE TECHNICAL MATERIEL CORPORATION claims proprietary right in the material disclosed hereon. This drawing is issued in confidence for engineering information only and may not be reproduced or used to manufacture anything shown hereon without permission from THE TECHNICAL MATERIEL CORPORATION to the user. This drawing is loaned for mutual assistance and is subject to recall at any time.		
FINISH		

UNLESS OTHERWISE SPECIFIED DIMENSIONS ARE IN INCHES AND INCLUDE CHEMICALLY APPLIED OR PLATED FINISHES	FINAL APPROVAL <i>SJM</i> DATE 7/17/69
DECIMALS .X ± .05 .XX ± .01 .XXX ± .005	ELECT. DES. DATE 7/17/69
FRACTIONS 1/64 TOLS. ANGLES 0° -30'	CHECKED <i>JDO</i> DATE 7-3-69
MATERIAL	DRAWN <i>K.H.H.</i> DATE 1/14/68
FINISH	

THE TECHNICAL MATERIEL CORP. MAMARONECK, NEW YORK			
POSE SWITCH, ROTARY			
SIZE B	CODE IDENT. NO. 82679	DWG NO. SW 511	ISSUE <i>1</i>
SCALE	SHEET		OF