

FLANGE MOUNTING SECTION "A"		
DESG	DIM	REMARKS
A	3 3/4	OVERALL SHAFT LTH.
B	2 1/2	SHAFT LTH TO REAR PLATE
C	1 1/2	WIDTH CLIP TO CLIP
D	1 9/16	LTH & WTH OF FLANGE
E	1.250	HOLE MTG OF FLANGE
F	1/8	DISTANCE FRM. FLANGE TO DUST COVER

FOOT MOUNTING SECTION "B"		
DESG	DIM	REMARKS
A		OVERALL SHAFT LENGTH
B		SHAFT LENGTH TO REAR PLATE
C		WIDTH CLIP TO CLIP
F		DISTANCE FROM FRONT FOOT MTG. TO DUST COVER
H		FOOT MTG. SIDE VIEW
J		SIDE VIEW OVERALL
K		SIDE VIEW WIDTH OVERALL
G		LENGTH FOOT TO FOOT

Switch Specifications

Mechanical

Rotation of Solenoid (viewed from solenoid end): CW / CCW / X (LEFT HAND)
 No. of sections: 4
 No. of positions: 12
 Angle of throw: 30°
 Type Mounting: Flange X Foot
 Solenoid Connections: Solder lug Wire X

Contacts

COMMERCIAL SWITCH type, Sections 1
 Non-shorting, Sections 234
 Silver plated Brass
 Silver alloy X
 Wafer material: Phenolic X Other
 Finish: Comm. 50hr. X SALT SPRAY
 Opr. temp.: 0°C TO 80°C
 Wafer Type F OR EQUIV.
 Electrical Specs.

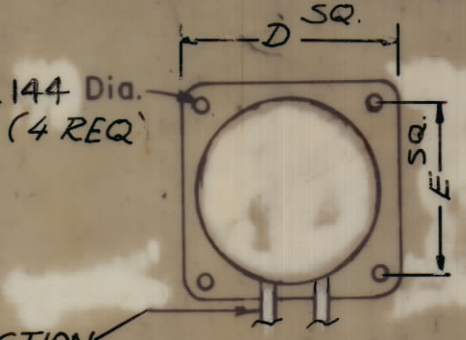
Current rating: Carry 5 amps resistive max.
 Break @ 24 volts: 2.5 amp resistive max.
 Break @ 115 volts: .5 amp resistive max.
 Dielectric Strength: 1000v clip to clip, 500v insulated clips back to back.

Coil Specifications

Solenoid Size: 3E
 Coil Resistance @ 20° C. 8.02 OHMS ± 5%
 Voltage: 28 VDC ± MIN
 Gross Starting Torque @ 20° C:
 Duty Cycle:
 Rotary Stroke Angle: 35°
 Electric Strength:
 Dust Cover: with X w/out

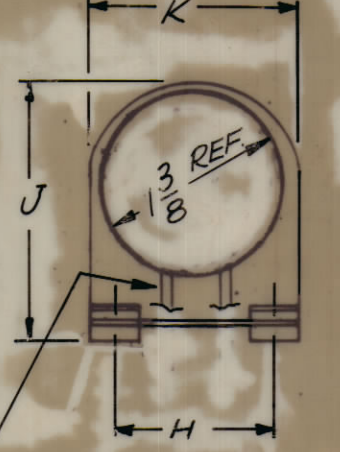
- NOTES:
- View wafers from solenoid end of switch.
 - Rear side of wafer viewed as if looking through wafers, from solenoid end.
 - Orientation of wafer is with Pin 1 in the one o'clock position as viewed from the solenoid end with solenoid connecting wires or terminals facing down.

FLANGE MTG. SECTION 'A'



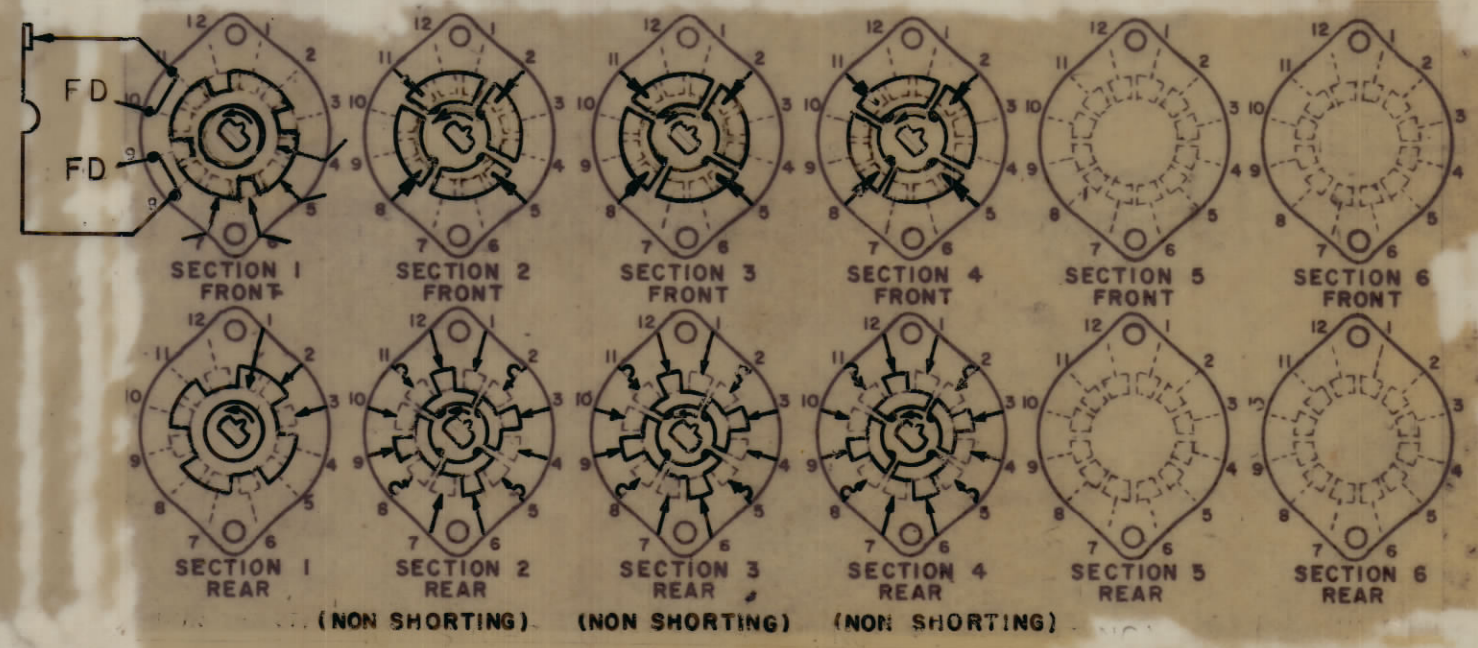
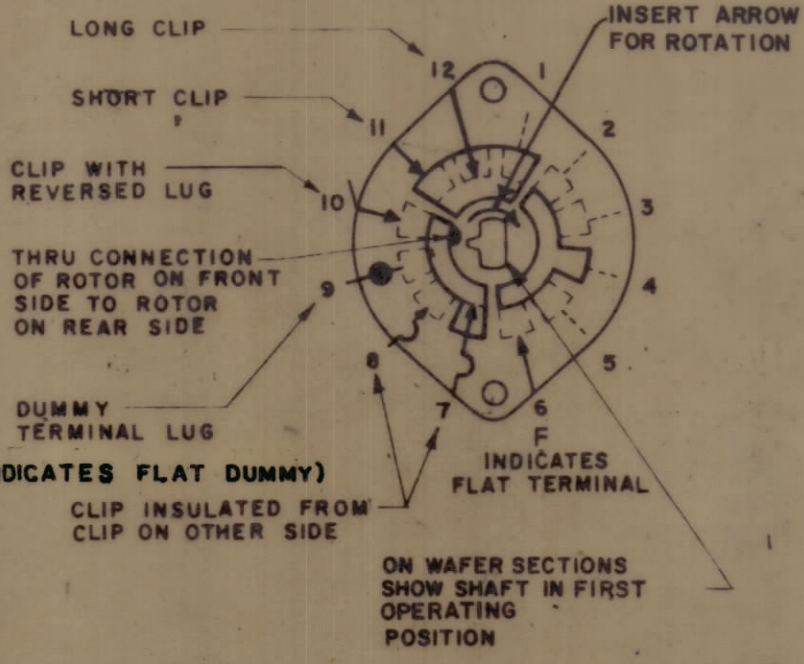
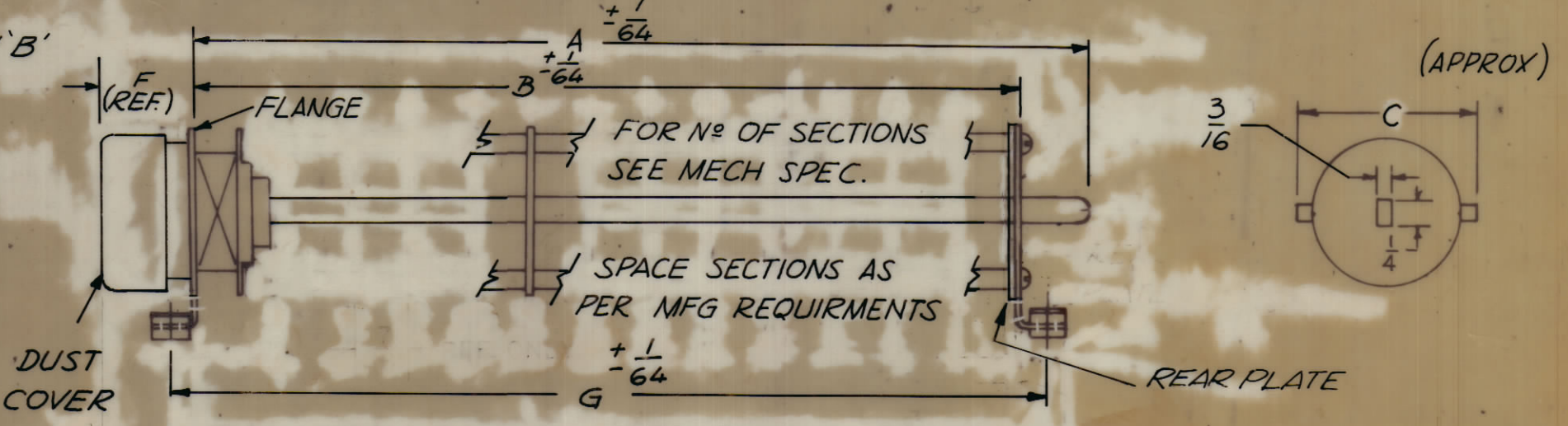
FOR TYPE OF CONNECTION WIRE OR LUG SEE MECH. SPEC.

FOOT MTG. SECTION 'B'



FOR TYPE OF CONNECTION WIRE OR LUG SEE MECH. SPEC.

REVISIONS							
ZONE	SYM	DESCRIPTION	DATE	E.M.N. NO.	DRAFT	CHKD	APPD
	X	EXP. RELEASE	11/7/68			K4	
	Ø	ORIGINAL RELEASE FOR PRODUCTION	11-15-68			K5	
	A	COMPLETELY REVISED	2-4-69	19287		GE	JEM
	B	COMPLETELY REVISED	8-22-69	19542		GE	OP
	C	FINISH WAS 100hr SALT SPRAY, FD DELET	2-23-70	19756		KD	



SYMBOLS USED IN MARKING PRINT

STANDARD DRAWING

1	HERR-4	
QTY/UNIT	MODEL USED ON	ASSY. NO.
SCALE	CODE	
DO NOT SCALE		

THE CONTENTS OF THIS DRAWING ARE THE EXCLUSIVE PROPERTY OF THE TECHNICAL MATERIEL CORP. ITS UNAUTHORIZED USE OR REPRODUCTION IN WHOLE OR IN PART IS STRICTLY FORBIDDEN.

REQ'D.	ITEM	PART NUMBER	DESCRIPTION	SYMBOL
POSE				
LIST OF MATERIAL				
MATERIAL			THE TECHNICAL MATERIEL CORP. MAMARONECK, NEW YORK	
FINISH			TITLE SWITCH, ROTARY, SOLENOID, FUNCTION 12 POSITION	
UNLESS OTHERWISE SPECIFIED DIMENSIONS ARE IN INCHES AND INCLUDE CHEMICALLY APPLIED OR PLATED FINISHES				
DRAWN		DATE	SIGNAL APPROVAL	
CHECKED		DATE	DATE	
ELECT. DES.		DATE	DATE	
MECH. DES.		DATE	DATE	
TOLERANCES			SW 506	
DECIMALS			SHEET	
FRACTIONS			REV. LTR.	
ANGLES			REV. LTR.	
± .05			REV. LTR.	
± .01			REV. LTR.	
± .005			REV. LTR.	
± 1°			REV. LTR.	