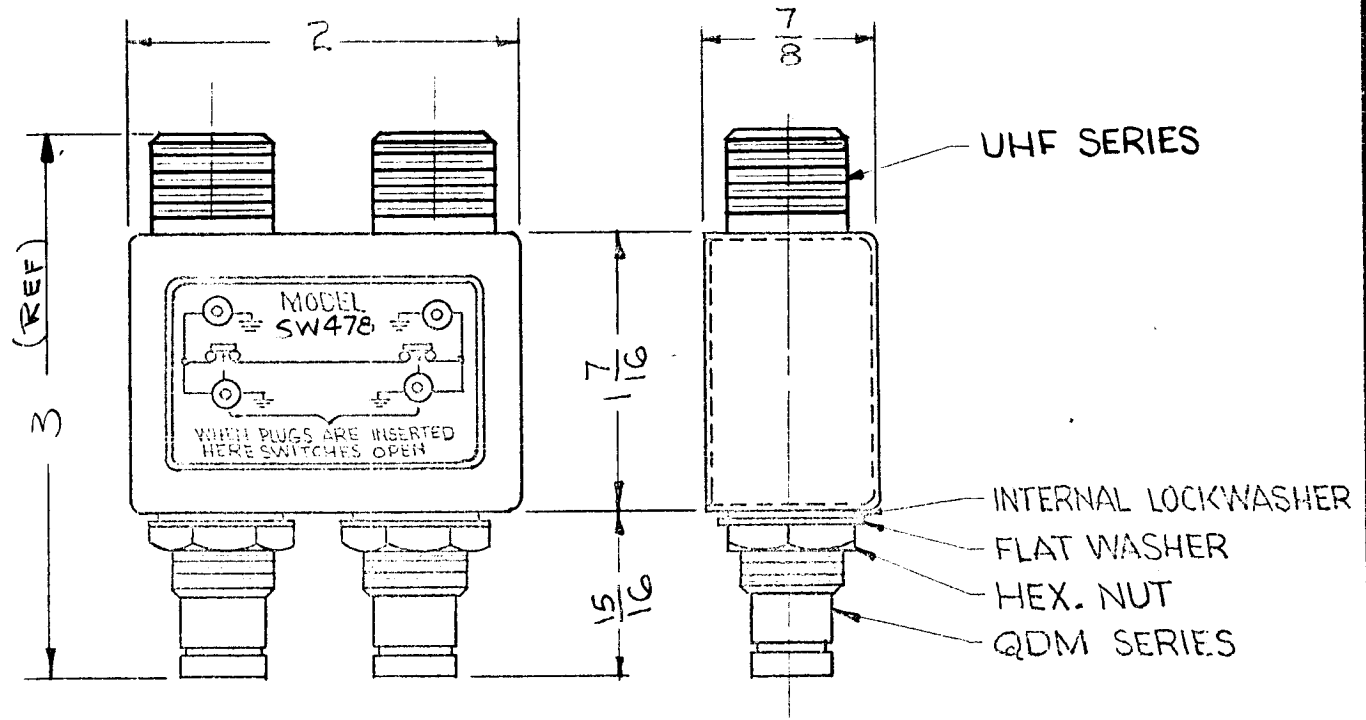


THE CONTENTS OF THIS DRAWING ARE THE EXCLUSIVE PROPERTY OF THE TECHNICAL MATERIEL CORP. ITS UNAUTHORIZED USE OR REPRCDUCTION IN WHOLE OR IN PART IS STRICTLY FORBIDDEN.

REQ. PER UNIT	USED ON			SW 478	Ø
	MODEL	ASSY. NO.	DATE		
	SW 478				



NOTES:
CASE - MATERIAL-BRASS
FINISH - S115 TMC SMOOTH
GREY ENAMEL
CONNECTORS - FINISH
BODIES - RHODIUM FLASH
CONTACTS - GOLD FLASH

NOTE: ASSIGNED PATENT NO. 2,767,267

REQ.	ITEM	PART NO.	DESCRIPTION			SYMBOL
Ø	ORIG. RELEASE FOR PROD	5/29/68	R.G.	HQ		
X	EXP. RELEASE	5/17/68	H.G.	HQ		
SYM	DESCRIPTION	DATE	CH. NO.	DRAFTS	CHECKER	ENG. APP.
UNLESS OTHERWISE SPECIFIED:		2A-				
DIMENSIONS ARE IN INCHES		MAXIMUM ALLOWABLE TOLERANCES HAVE BEEN DETERMINED AND ANY DEVIATIONS WILL BE CAUSE FOR REJECTION. REMOVE ALL BURRS AND SHARP EDGES				
TOLERANCES ON		TYPE & TEMPER HEATTREAT. SPEC.				
FRAC. ± 1/64 DEC. ± .005 ANGLES ± 1/2°		DRAWN				
		CHECKED				
		FINAL APPROVAL				
SEE NOTES		SW 478 Ø				
FINISH & SPEC. NO.		ELEC. DES. APP.		MECH. DES. APP.		