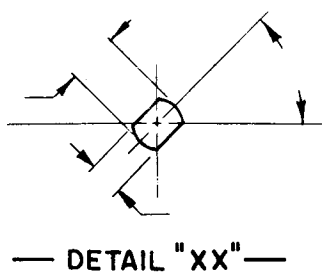


DESG.	DIMENSION	TOL.	REMARK
A	3/4	±.015	SHAFT LG. FROM MTG. SURFACE
B	3/8	±.005	BUSH. LG.
C	—	±.015	FLAT LG. (IF REQ.)
D	—	±2°	FLAT ANGLE (IF REQ.)
E	—	±.002	FLAT (IF REQUIRED)
F	—	±.010	KEY LOCATION (IF REQ.)
G	—	—	KEY LOCATION (IF REQ.)
M	1/8	±.010	
N	1/16	±.093	REAR SCR. EXT.
Q	—	±.031	REAR SHAFT EXT.
R	1/2	—	1st SEC. SPACING

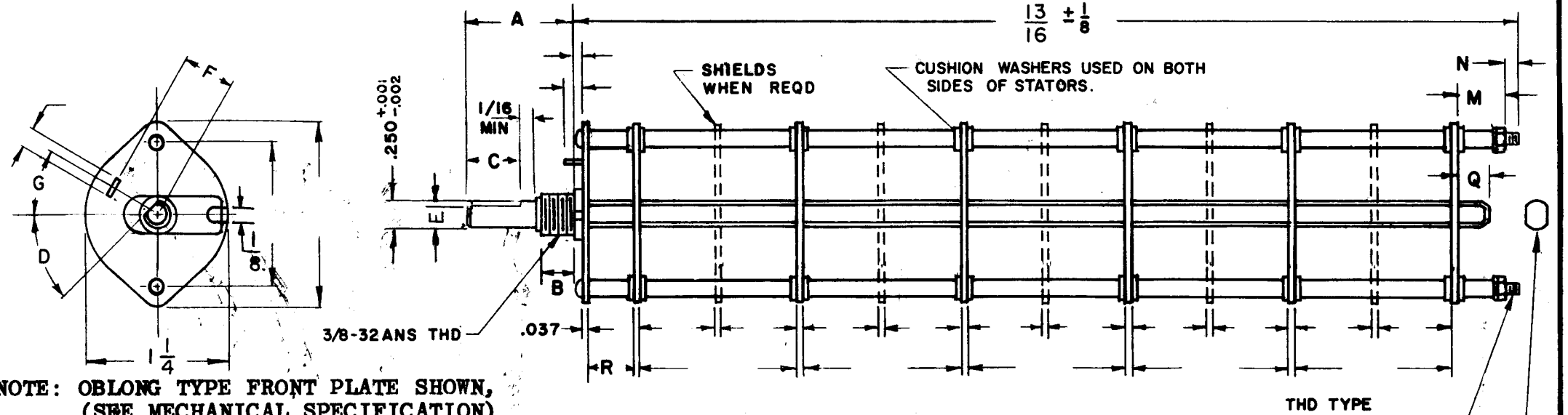
TMC PART NUMBER: SW-464 **STAMP ON FRONT PLATE**
 FRONT PLATE SHAPE: ROUND OR OBLONG
 MECHANICAL SPECIFICATIONS:
 NUMBER OF SECTIONS- 1
 NUMBER OF POSITIONS- 4
 ANGLE OF THROW- 60°
 CONTACTS:
 SHORTING TYPE, SECTIONS _____
 NON SHORTING TYPE, SECTIONS ✓
 SILVER PLATED BRASS, SECTIONS ✓
 SILVER ALLOY, SECTIONS _____
 WAFERS:
 BAKELITE, SECTIONS ✓
 CERAMIC, SECTIONS _____
 MYCALEX, SECTIONS _____
 IMPREGNATION (IF REQ.) _____
 FINISH REQUIREMENTS:
 ARMY ✓ NAVY _____ COMMERCIAL ✓
 SALT TEST (IF REQ.) _____
 HARDWARE, TO BE SUPPLIED BY MANUFACTURER:
 QUAN. — -32 NUTS — ACROSS FLATS
 MATERIAL — PLATING _____
 QUAN. — INTERNAL TOOTH LOCKWASHER
 MATERIAL — PLATING _____
 ELECTRICAL SPECIFICATIONS:
 MAXIMUM RATED VOLTAGE _____
 MAXIMUM RATED CURRENT _____

NOTE:
 FOR S401-13 ("F" TYPE) SWITCHES, THE SHAFT POSITION MUST BE SPECIFIED ON DETAIL "XX" BELOW.



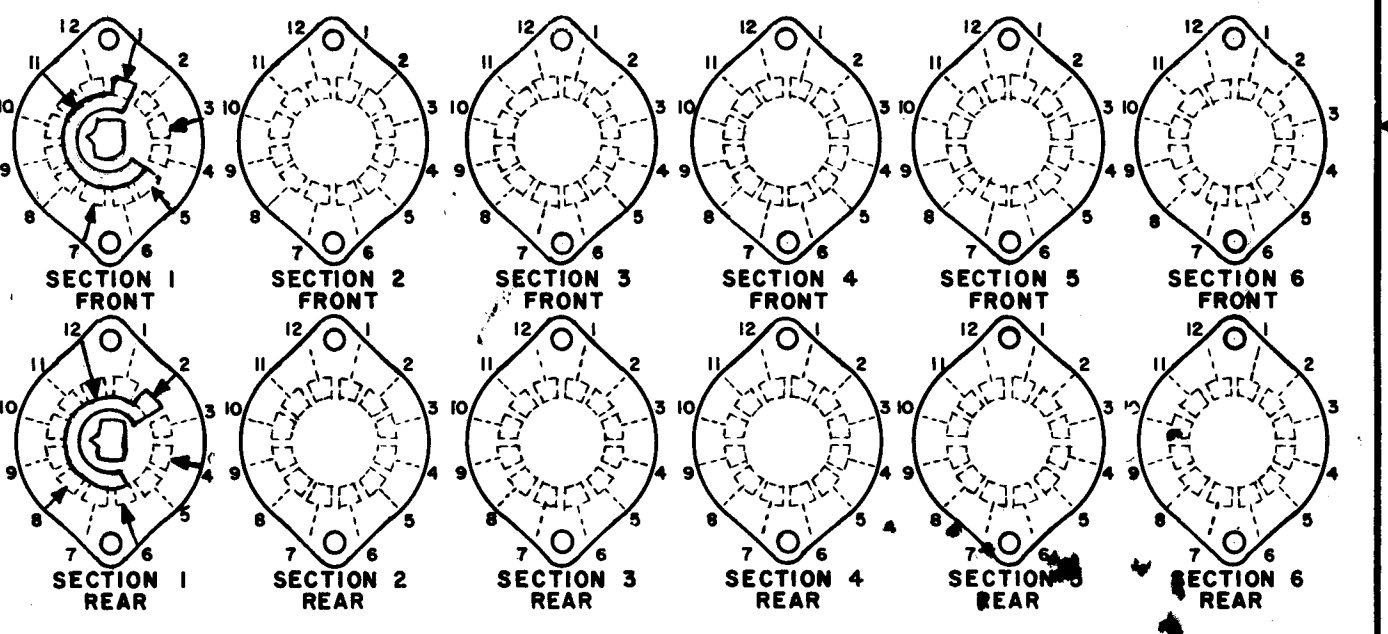
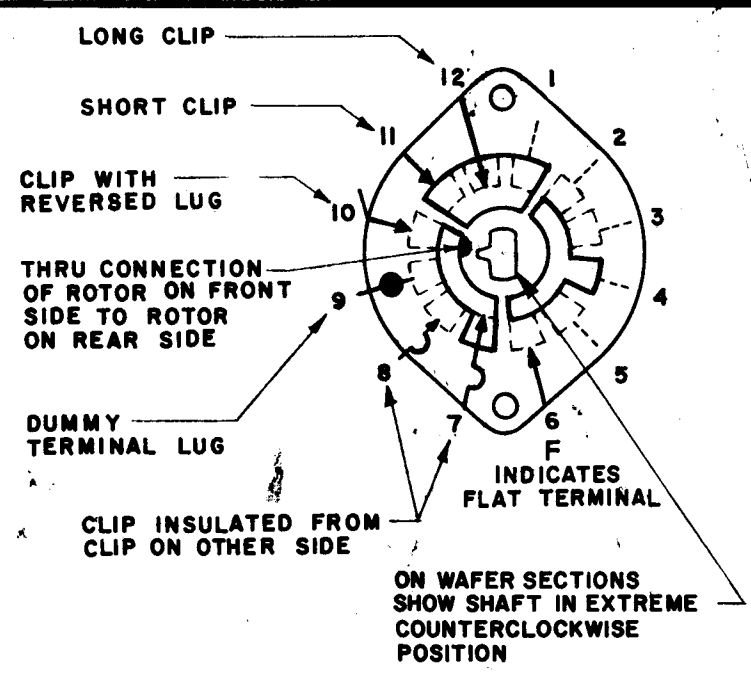
NOTES

REVISIONS						
ZONE	LTR	DESCRIPTION	DATE	E.M.N.NO	DRAFT	CHKD / APPD
	A	ADD POS. 3 (SHORT CLIP) TO SECT. 1 FR. ADD POS. 4 (SHORT CLIP) TO SECT. 2 REAR	10.21.68	19080	H.2	J. De FB



NOTE: OBLONG TYPE FRONT PLATE SHOWN, (SEE MECHANICAL SPECIFICATION)

FRONT AND REAR SECTIONS VIEWED FROM FRONT OR KNOB END OF SWITCH IN EXTREME COUNTERCLOCKWISE POSITION. SEE NOTE (DET. "XX")



SYMBOLS USED IN MARKING PRINT

SWITCH, ROTARY - 12 POINT TYPE F

BCT-10KA		UNLESS OTHERWISE SPECIFIED DIMENSIONS ARE IN INCHES AND INCLUDE CHEMICALLY APPLIED OR PLATED FINISHES		FINAL APPROVAL DATE 4/15/68		THE TECHNICAL MATERIEL CORP. MAMARONECK, NEW YORK		
QTY / UNIT	MODEL USED ON	ASS'Y NO.	DECIMALS .X ± .05 .XX ± .01 .XXX ± .005	FRACTIONS 1/64 ANGLES 0° - 30'	MECH. DES. DATE 4/15/68	F. BUDETTI		
APPLICATION			ELECT. RES. 		DATE	SWITCH, ROTARY		
CODE			MATERIAL		CHECKED DATE 4/15/68	SIZE B CODE IDENT. NO. 82679 DWG NO. SW464		
NOTICE TO PERSONS RECEIVING THIS DRAWING THE TECHNICAL MATERIEL CORPORATION claims proprietary right in the material disclosed hereon. This drawing is issued in confidence for engineering information only and may not be reproduced or used to manufacture anything shown hereon without permission from THE TECHNICAL MATERIEL CORPORATION to the user. This drawing is loaned for mutual assistance and is subject to recall at any time.			FINISH		DRAWN DATE 1.30.68	ISSUE A		
NOTES					SCALE		SHEET OF	