

DESG.	DIMENSION	TOL.	REMARK
A	1 3/8	±.015	SHAFT LG. FROM MTG. SURFACE
B	1/4	±.005	BUSH. LG.
C	—	±.015	FLAT LG. (IF REQ.)
D	—	±2°	FLAT ANGLE (IF REQ.)
E	—	±.002	FLAT (IF REQUIRED)
F	17/32	±.010	KEY LOCATION (IF REQ.)
G	180°		KEY LOCATION (IF REQ.)
M	5/32	±.010	
N	1/8	±.093	REAR SCR. EXT.
Q	11/16	±.031	REAR SHAFT EXT.
R	3/8		1st SEC. SPACING

TMC PART NUMBER: SW-441 STAMP ON FRONT PLATE  
 FRONT PLATE SHAPE: ROUND  OR OBLONG  
 MECHANICAL SPECIFICATIONS:  
 NUMBER OF SECTIONS- 2  
 NUMBER OF POSITIONS- CONTINUOUS  
 ANGLE OF THROW- 30°  
 CONTACTS:  
 SHORTING TYPE, SECTIONS 1, 2  
 NON SHORTING TYPE, SECTIONS  
 SILVER PLATED BRASS, SECTIONS 1, 2  
 SILVER ALLOY, SECTIONS

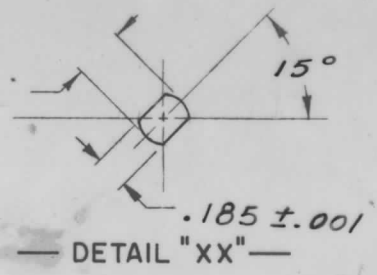
WAFERS:  
 BAKELITE, SECTIONS 2  
 CERAMIC, SECTIONS  
 MYCALEX, SECTIONS 1  
 IMPREGNATION (IF REQ.)

FINISH REQUIREMENTS:  
 ARMY NAVY COMMERCIAL   
 SALT TEST (IF REQ.)

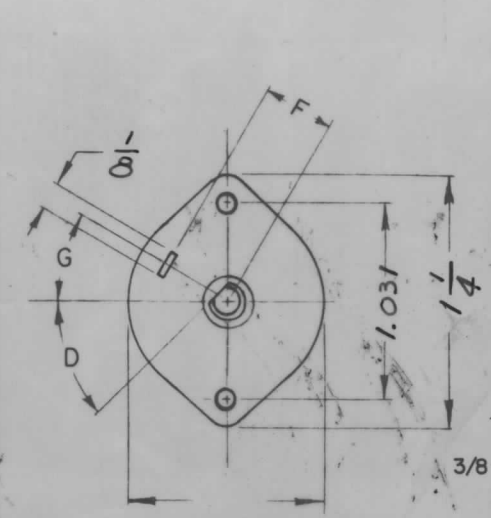
HARDWARE, TO BE SUPPLIED BY MANUFACTURER:  
 1 QUAN. 3/8 -32 NUTS ACROSS FLATS  
 MATERIAL STEEL PLATING  
 1 QUAN. 3/8 INTERNAL TOOTH LOCKWASHER  
 MATERIAL STEEL PLATING CADMIUM

ELECTRICAL SPECIFICATIONS:  
 MAXIMUM RATED VOLTAGE 110 VAC  
 MAXIMUM RATED CURRENT 1.0 AMP BREAK  
 5.0 AMP CARRY

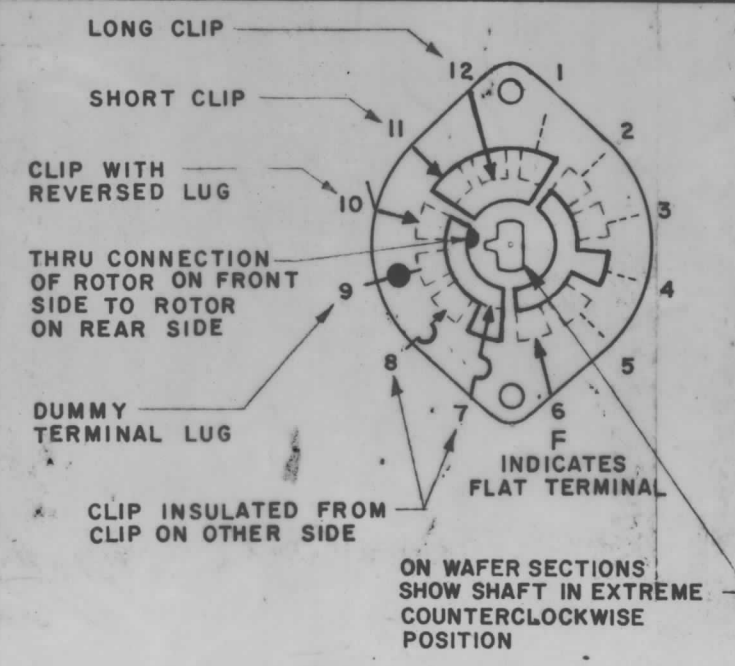
NOTE:  
 FOR S401-13 ("F" TYPE) SWITCHES, THE SHAFT POSITION MUST BE SPECIFIED ON DETAIL "XX" BELOW.



NOTES



NOTE: OBLONG TYPE FRONT PLATE SHOWN, (SEE MECHANICAL SPECIFICATION)

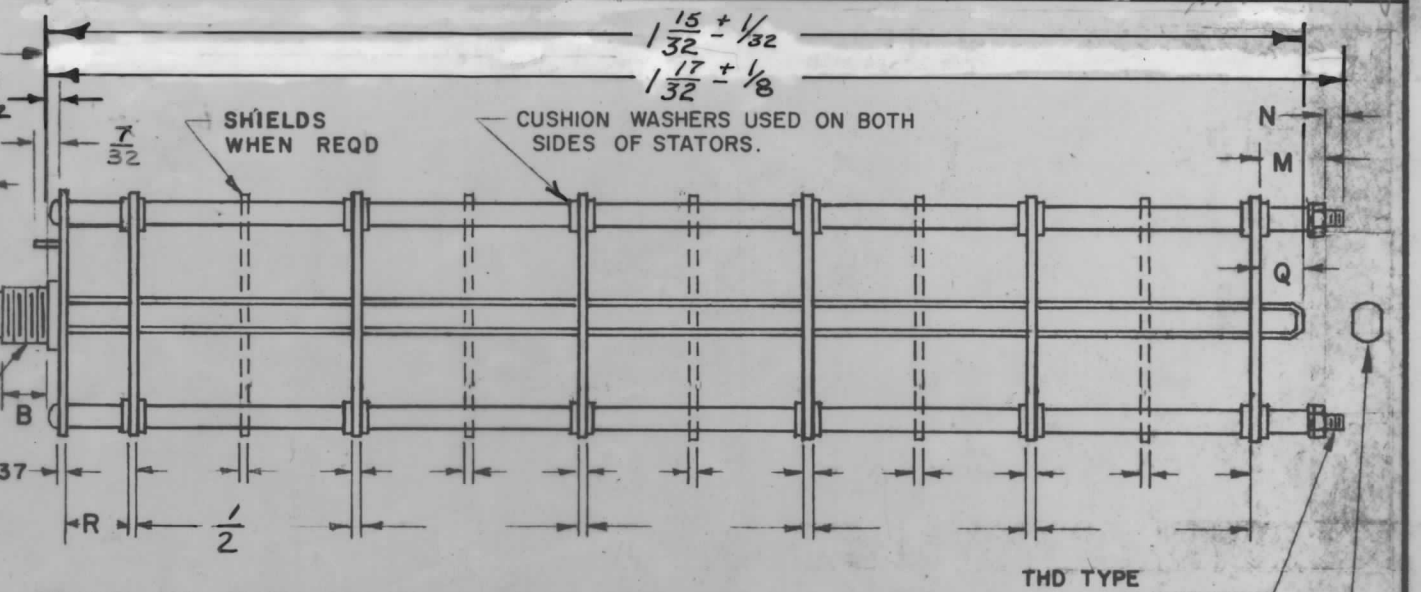


SYMBOLS USED IN MARKING PRINT

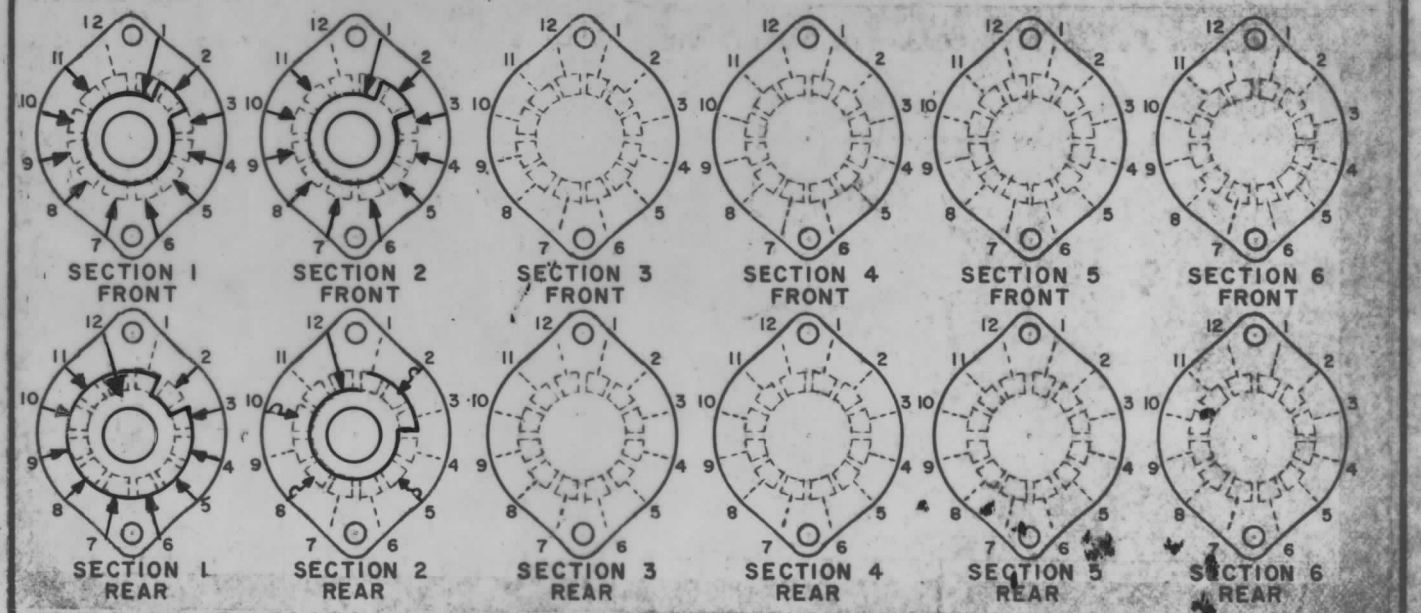
Q'TY./UNIT	MODEL USED ON	ASS'Y. NO.
1	MMX-( )	BMA1Q1
1	VOX-7	BMA111
SCALE	CODE	

THE CONTENTS OF THIS DRAWING ARE THE EXCLUSIVE PROPERTY OF THE TECHNICAL MATERIEL CORP. ITS UNAUTHORIZED USE OR REPRODUCTION IN WHOLE OR IN PART IS STRICTLY FORBIDDEN.

REVISIONS						
SYM	DESCRIPTION	DATE	E.M.N. NO.	DRAFT	CHKD	APPD
X	REVISED	1-12-67		HLA		
Ø	ORIGINAL RELEASE FOR PRODUCTION	5-3-67		G.D.L.		
A	DELE. MOD. HFSR-4 -MOD. MMX-( ) WAS MMX-1	10/26/67	C.C.	Enf		



FRONT AND REAR SECTIONS VIEWED FROM FRONT OR KNOB END OF SWITCH IN EXTREME COUNTERCLOCKWISE POSITION. SEE NOTE (DET. "XX")



SWITCH, ROTARY - 12 POINT TYPE "F"

MATERIAL		THE TECHNICAL MATERIEL CORP, MAMARONECK, NEW YORK			
FINISH		TITLE SWITCH, ROTARY 100 KHZ			
UNLESS OTHERWISE SPECIFIED DIMENSIONS ARE IN INCHES AND INCLUDE CHEMICALLY APPLIED OR PLATED FINISHES		DRAWN JL	DATE 11/3/66	FINAL APPROVAL [Signature]	
		CHECKED [Signature]	DATE 4/26/67	DATE 4/26/67	
DECIMALS .X ± .05 .XX ± .01 .XXX ± .005		ELECT. DES. DATE		DATE	
FRACTIONS ± 1/64 ANGLES ± 0° 30'		MECH. DES. DATE		DATE	
TOLERANCES		SW 441		A	
		SHEET		REV. LTR.	