

DESG.	DIMENSION	TOL.	REMARKS
A	1-29/32	MAX.	Foot mount only
B	1-3/8	1/32	Foot mount only
C	~		Flange mount only
D	~		Flange mount only
E	2-3/8	1/32	Max. over clips
F	.544	1/32	From rear plate to shaft end
G	4.055	MAX.	Total length for foot mount
H	2.837	1/32	Foot mount only
J	1-9/32	MAX.	
K	47/64	1/32	
L	1/2	1/32	Last wafer to rear plate
M	3-17/32	MAX.	Total length (to end of rear plate)
N	1-9/16	1/32	Size 3-1 5/32 Size 5-1 9/16
P	2-11/16	MAX.	FOOT MOUNT ONLY

Switch Specifications

Mechanical

Rotation of Solenoid (viewed from solenoid end): CW  CCW   
 No. of sections: 3  
 No. of positions: 12  
 Angle of throw: 30°  
 Type Mounting: Flange  Foot   
 Solenoid Connections: Solder lug  Wire

Contacts:

Notch Homing type Sections  
 Non-shorting, Sections 2 E 3  
 Silver plated Brass  
 Silver alloy

Wafer material: Phenolic  Other  wafer No. 1 epoxy glass with Kel-F. Rotor  
 Finish: Comm. 50hr. OR 100hr. salt spray. wafer 2 E 3 Kel-F.

Electrical Specs.

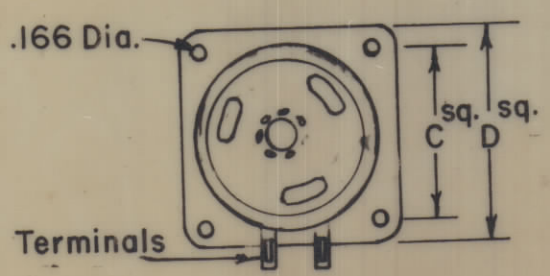
Current rating: Carry 10 amps resistive max.  
 Break @ 24 volts: 5 amp resistive max.  
 Break @ 115 volts: 1 amp resistive max.  
 Dielectric Strength: 1000v clip to clip, 500v insulated clips back to back.

Coil Specifications

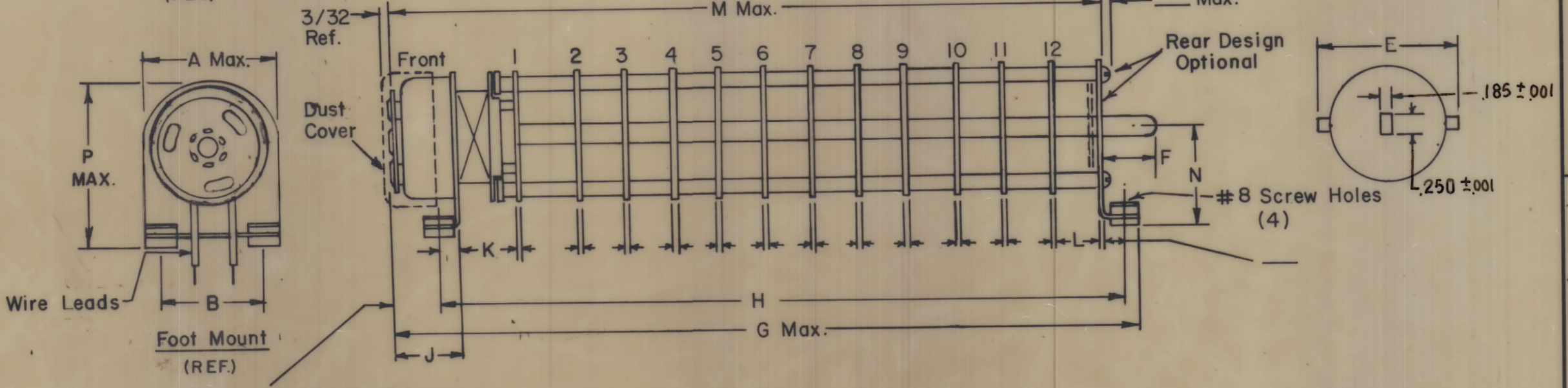
Solenoid Size: 5B  
 Coil Resistance @ 20° C.: 4.88 ± 10%  
 Voltage: 26 VDC  
 Gross Starting Torque @ 20° C: 4.1 in. lbs. AT 19.2 VDC  
 Duty Cycle: 1/10  
 Rotary Stroke Angle: 35°  
 Electric Strength: 1200 VRMS  
 Dust Cover: with  w/out

NOTES:

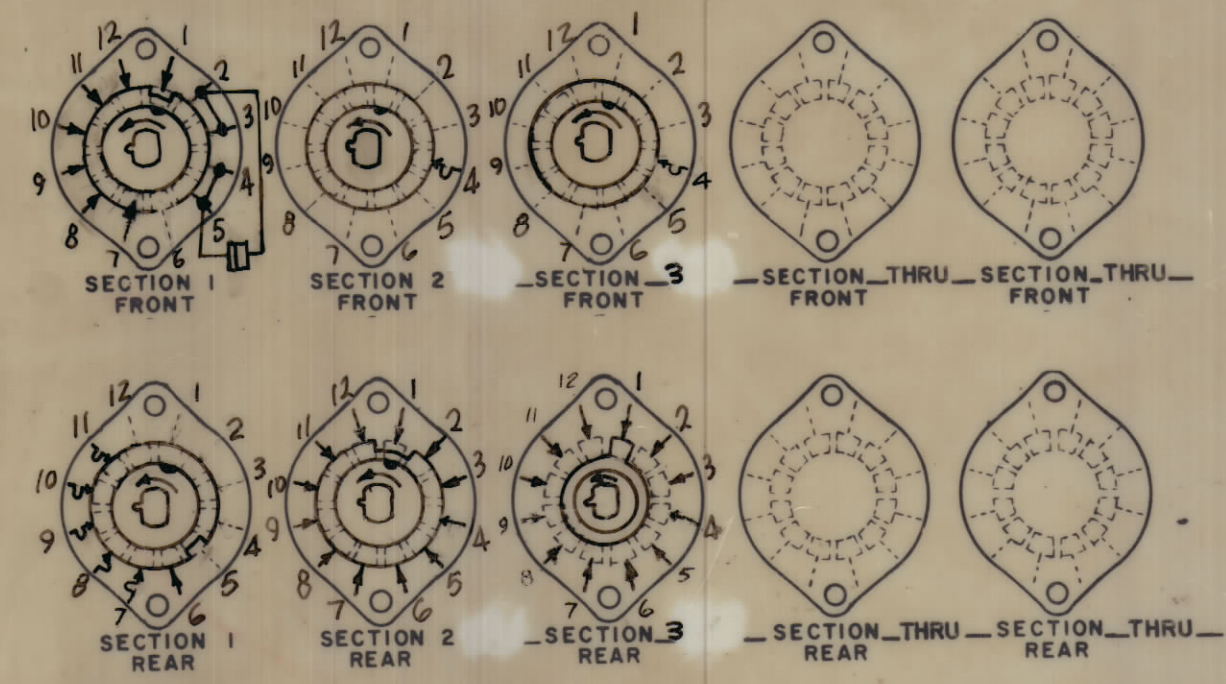
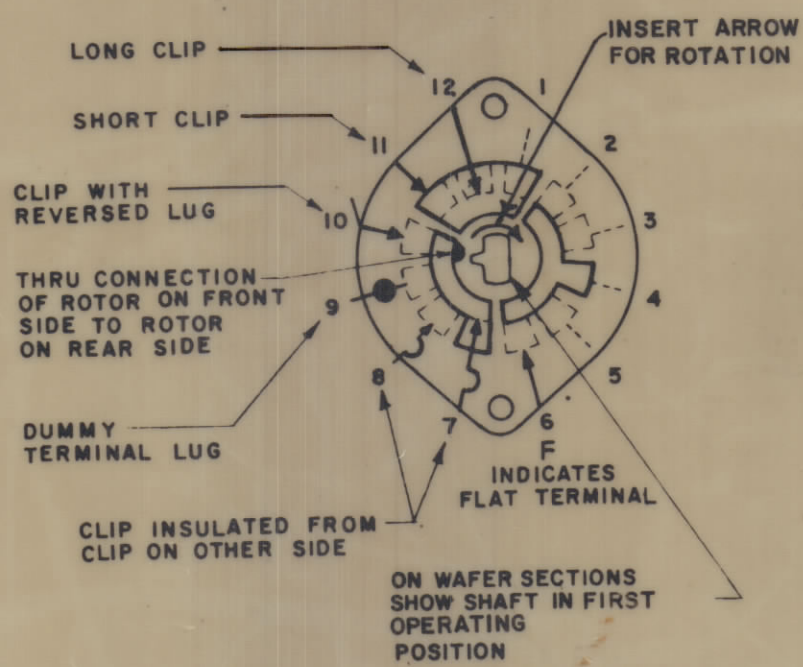
- View wafers from solenoid end of switch.
- Rear side of wafer viewed as if looking through wafers, from solenoid end.
- Orientation of wafer is with Pin 1 in the one o'clock position, as viewed from the solenoid end with solenoid connecting wires or terminals facing down.
- Rotation is in direction of arrow viewed from solenoid end.
- Wafers shown in No. 1 position.



Flange Mount (REF.)



Foot Mount (REF.)  
 Sol. Size 3-19/32 Max.  
 Sol. Size 5-15/16 Max.



SYMBOLS USED IN MARKING PRINT

REQ'D.	ITEM	PART NUMBER	DESCRIPTION	SYMBOL
F. BUDETTI LIST OF MATERIAL				
MATERIAL		THE TECHNICAL MATERIEL CORP. MAMARONECK, NEW YORK		
FINISH		TITLE SWITCH, ROTARY, SOLENOID 12 POSITION		
UNLESS OTHERWISE SPECIFIED DIMENSIONS ARE IN INCHES AND INCLUDE CHEMICALLY APPLIED OR PLATED FINISHES		DRAWN	DATE	FINAL APPROVAL
		DATE	DATE	DATE
		ELECT. DES.	DATE	DATE
		MECH. DES.	DATE	DATE
		SW 430		B
		SHEET		REV. LTR.

1 TLAA-2.5K		ASS'Y. NO.
QTY./UNIT	MODEL USED ON	
SCALE	CODE	5401-281 (128-643-001)

THE CONTENTS OF THIS DRAWING ARE THE EXCLUSIVE PROPERTY OF THE TECHNICAL MATERIEL CORP. ITS UNAUTHORIZED USE OR REPRODUCTION IN WHOLE OR IN PART IS STRICTLY FORBIDDEN.

NOTES

SW 430 B