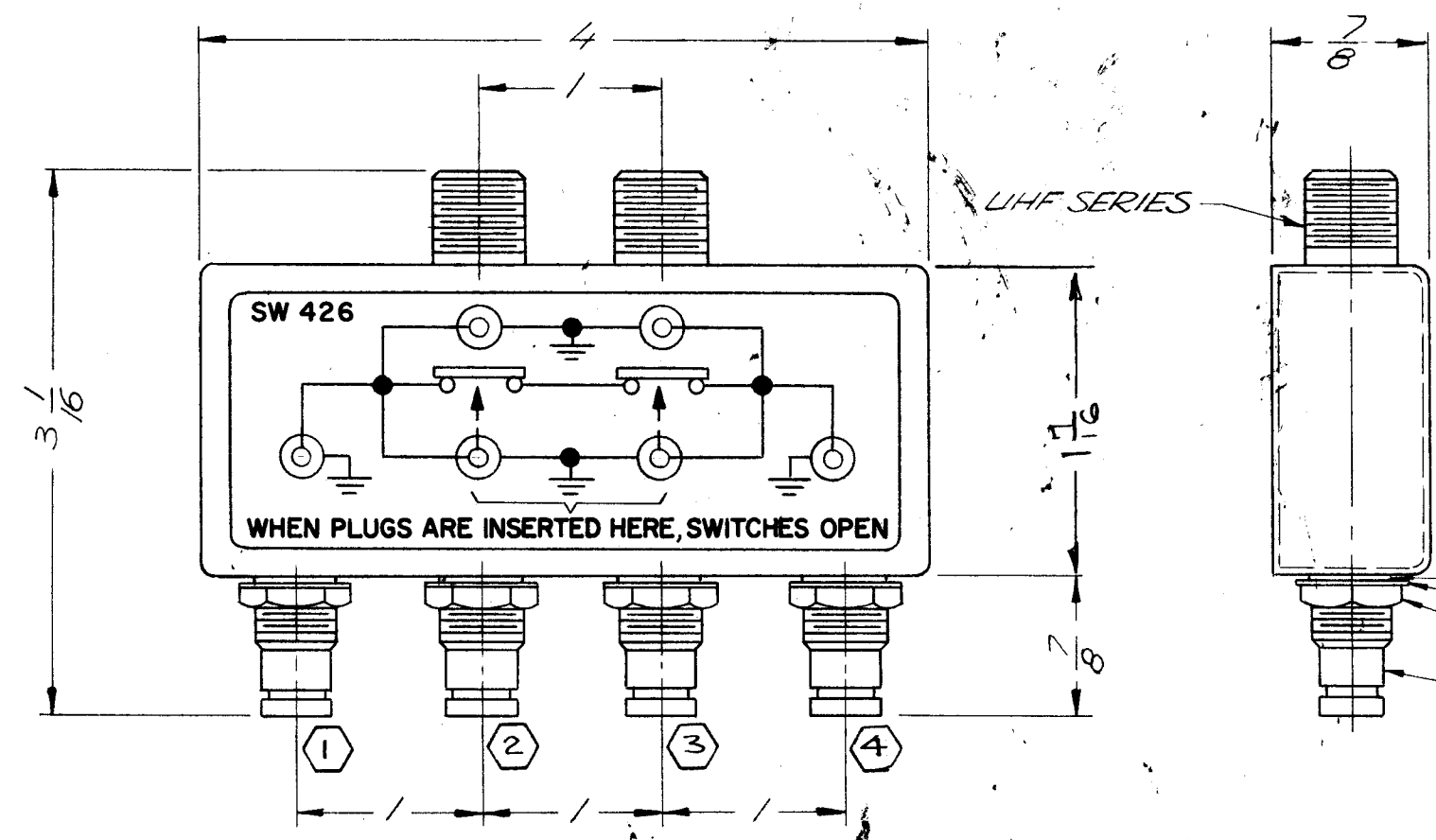


REVISIONS						
ZONE	LTR	DESCRIPTION	DATE	E.M.N.NO	DRAFT	CHKD APPD
	X	EXP. RELEASE	5/29/69	X	K.A.	[Signature]
	Ø	ORIGINAL RELEASE	6/2/69	Ø	R	[Signature]



ELECTRICAL SPECIFICATIONS:
 DUAL LHF TO QUAD QDM
 QDM 2 & 3 - SWITCHINGS
 QDM 1 & 4 - NON SWITCHING.

MECHANICAL SPECIFICATIONS:
 CASE
 MATERIAL: BRASS
 FINISH: S115 TMC SMOOTH GREY ENAM.
 CONNECTORS
 BODY FINISH: RHODIUM FLASH
 CONTACTS: GOLD FLASH

INTERNAL LOCKWASHER
 FLAT WASHER
 HEX NUT
 QDM SERIES

1	SW 426	A 4452
QTY / UNIT	MODEL USED ON	ASS'Y NO.
APPLICATION		
	CODE	2 A 4452

NOTICE TO PERSONS RECEIVING THIS DRAWING
 THE TECHNICAL MATERIEL CORPORATION claims proprietary right in the material disclosed hereon. This drawing is issued in confidence for engineering information only and may not be reproduced or used to manufacture anything shown hereon without permission from THE TECHNICAL MATERIEL CORPORATION to the user. This drawing is loaned for mutual assistance and is subject to recall at any time.

UNLESS OTHERWISE SPECIFIED DIMENSIONS ARE IN INCHES AND INCLUDE CHEMICALLY APPLIED OR PLATED FINISHES

DECIMALS	FRACTIONS
.X ± .05	1/64
.XX ± .01	TOLS. ANGLES
.XXX ± .005	0° - 30'

MATERIAL
SEE NOTES

FINISH
SEE NOTES

REQ'D	ITEM	PART NUMBER	DESCRIPTION	SYM.
	A. MARTINENGLO LIST OF MATERIAL CANADA (SKIDOGA)			
FINAL APPROVAL		DATE	THE TECHNICAL MATERIEL CORP.	
MECH. DES.		DATE	MAMARONECK, NEW YORK	
ELECT. DES.		DATE	R. F. SWITCH, BRIDGING ASSEMBLY	
CHECKED		DATE	SIZE	ISSUE
DRAWN		DATE	CODE IDENT. NO.	DWG NO.
			B	82679
			SCALE 1:1	SHEET OF
				SW 426