

DESG.	DIMENSION	TOL.	REMARK
A	.625	±.015	SHAFT LG. FROM MTG. SURFACE
B	.250	±.005	BUSH. LG.
C	1/16	±.015	FLAT LG. (IF REQ.)
D	1/16	±2°	FLAT ANGLE (IF REQ.)
E	1/16	±.002	FLAT (IF REQUIRED)
F	.531	±.010	KEY LOCATION (IF REQ.)
G	180°	±2°	KEY LOCATION (IF REQ.)
M	.187	±.010	
N	.062	±.093	REAR SCR. EXT.
Q	.187	±.031	REAR SHAFT EXT.
R	.375	±.015	1st SEC. SPACING

TMC PART NUMBER: SW-415 STAMP ON FRONT PLATE
 FRONT PLATE SHAPE: ROUND OR OBLONG

MECHANICAL SPECIFICATIONS:
 NUMBER OF SECTIONS - 2
 NUMBER OF POSITIONS - CONTINUOUS
 ANGLE OF THROW - 30°

CONTACTS:
 SHORTING TYPE, SECTIONS 1
 NON SHORTING TYPE, SECTIONS 2
 SILVER PLATED BRASS, SECTIONS 2
 SILVER ALLOY, SECTIONS 1 & 2

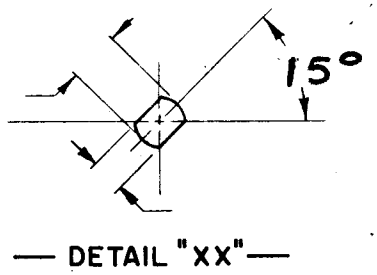
WAFERS:
 BAKELITE, SECTIONS 1 & 2
 CERAMIC, SECTIONS _____
 MYCALEX, SECTIONS _____
 IMPREGNATION (IF REQ.) _____

FINISH REQUIREMENTS:
 ARMY NAVY COMMERCIAL _____
 SALT TEST (IF REQ.) 50 HRS

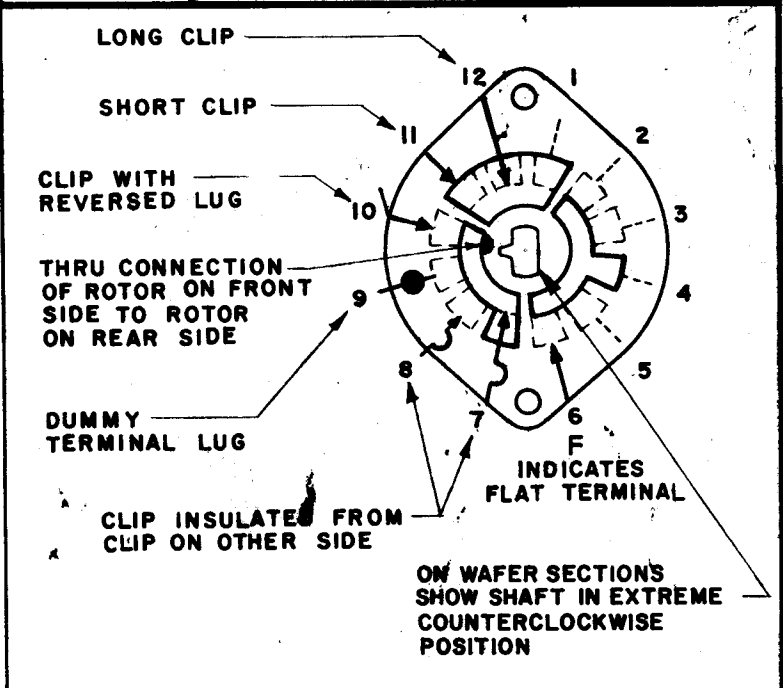
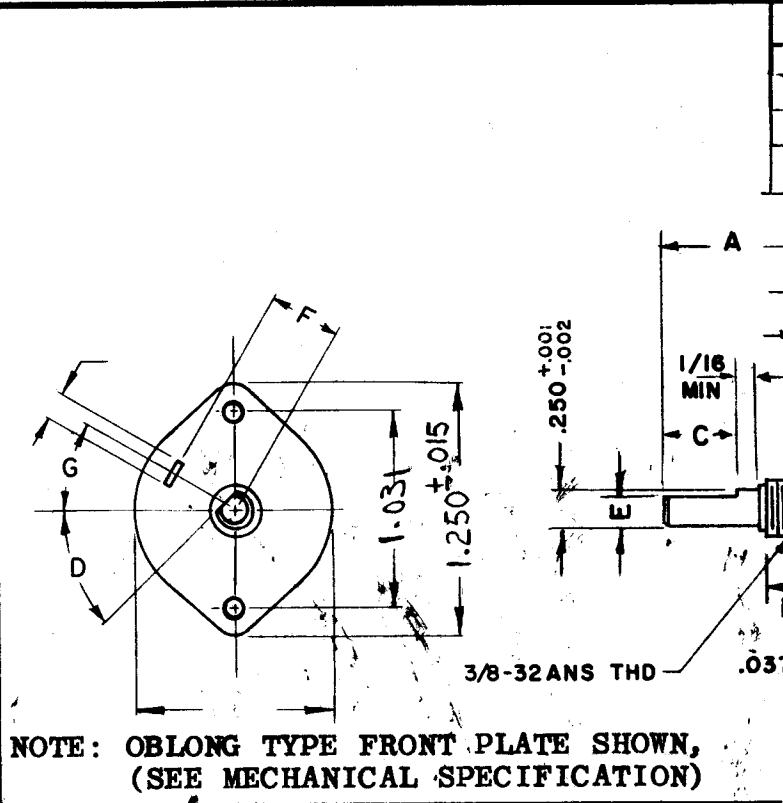
HARDWARE, TO BE SUPPLIED BY MANUFACTURER:
1 QUAN. 3/8-32 NUTS 9/16 ACROSS FLATS
 MATERIAL STEEL PLATING CADMIUM
1 QUAN. STEEL INTERNAL TOOTH LOCKWASHER
 MATERIAL STEEL PLATING CADMIUM

ELECTRICAL SPECIFICATIONS:
 MAXIMUM RATED VOLTAGE 110 VAC BREAK
 MAXIMUM RATED CURRENT 1 Amp BREAK

NOTE:
 FOR S401-13 ("F" TYPE) SWITCHES, THE SHAFT POSITION MUST BE SPECIFIED ON DETAIL "XX" BELOW.



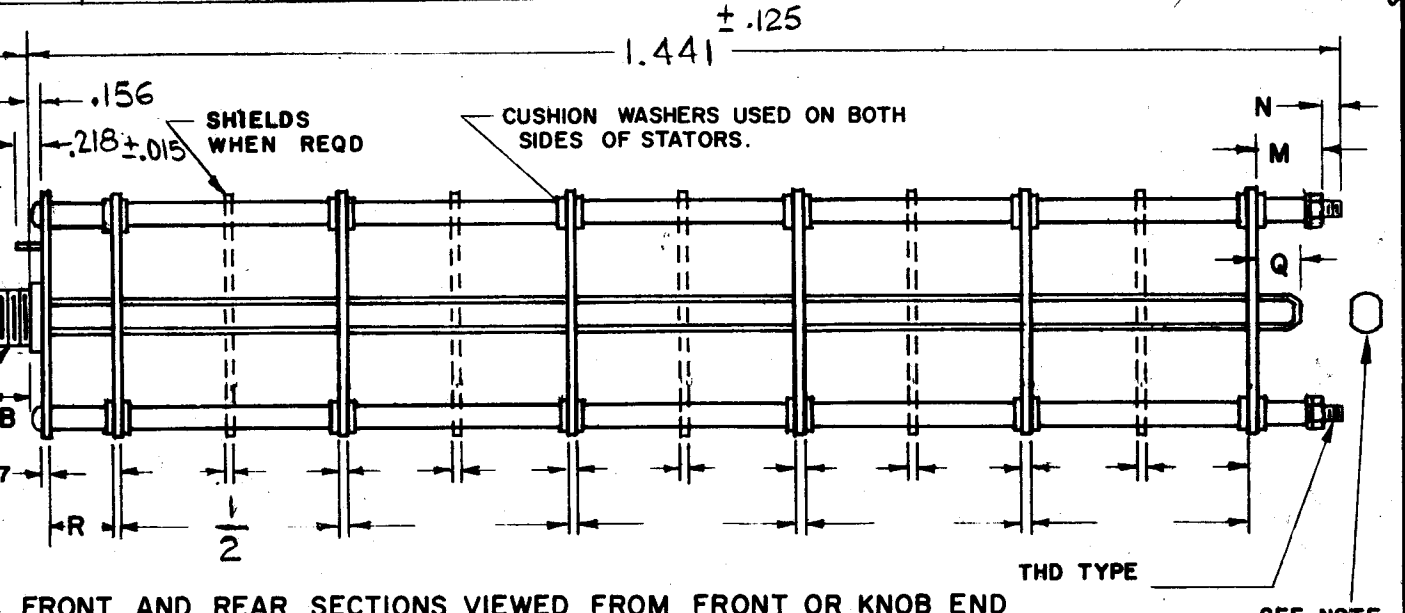
NOTES



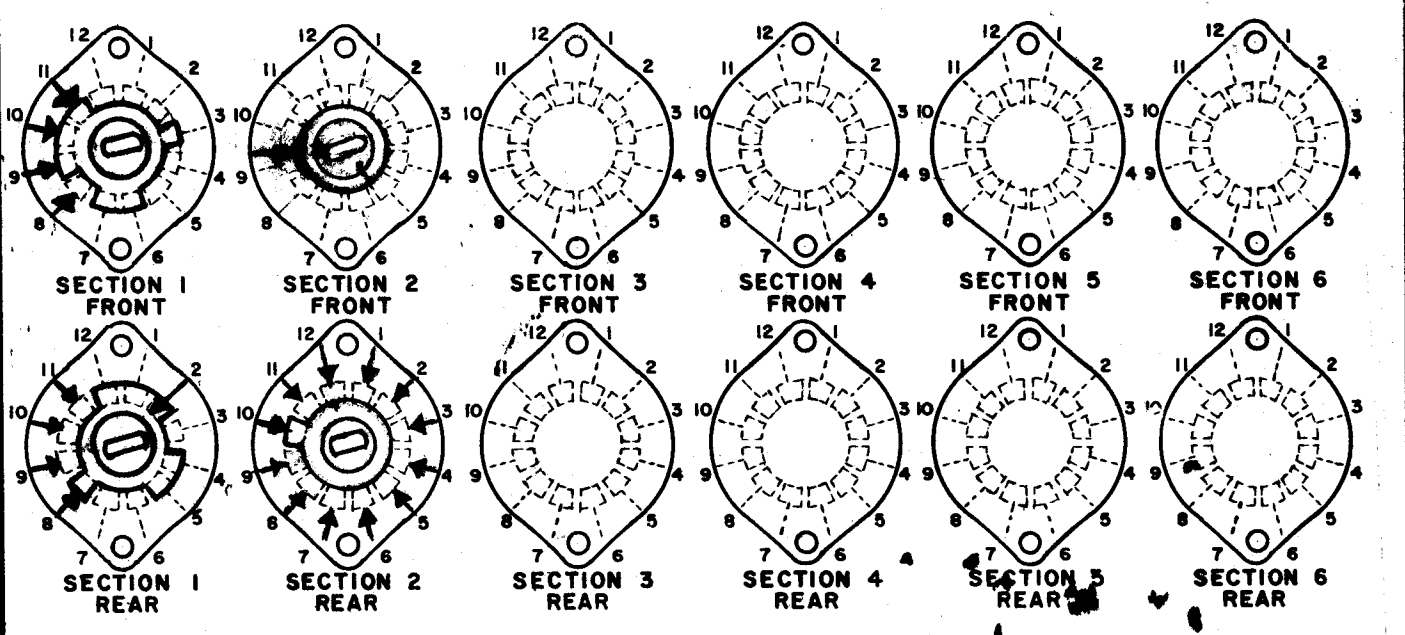
SYMBOLS USED IN MARKING PRINT

QTY./UNIT	MODEL USED ON	ASS'Y. NO.
1	LRCM	AX568
SCALE	CODE	
THE CONTENTS OF THIS DRAWING ARE THE EXCLUSIVE PROPERTY OF THE TECHNICAL MATERIEL CORP. ITS UNAUTHORIZED USE OR REPRODUCTION IN WHOLE OR IN PART IS STRICTLY FORBIDDEN.		

REVISIONS						
SYM	DESCRIPTION	DATE	E.M.N. NO.	DRAFT	CHKD	APPD
Ø	ORIGINAL RELEASE FOR PRODUCTION	1/16/66	Ø	CV		
A	CONTACTS - SECTION WERE HOMING	2.1.67	17743	ltd		
B	DIM 1.441 ± .125 WAS 31/32 ± 1/8 - DIM 2.18 ± .015 WAS .186 ± .015 DIM 1.250 ± .015 WAS 1.312 ON TOL. COLUMN. 2 ± 2° ADDED	5-12-67	18198	G.D.L		



FRONT AND REAR SECTIONS VIEWED FROM FRONT OR KNOB END OF SWITCH IN EXTREME COUNTERCLOCKWISE POSITION. SEE NOTE (DET. "XX")



SWITCH, ROTARY - 12 POINT TYPE

MATERIAL		THE TECHNICAL MATERIEL CORP. MAMARONECK, NEW YORK			
FINISH		TITLE SWITCH, ROTARY			
UNLESS OTHERWISE SPECIFIED DIMENSIONS ARE IN INCHES AND INCLUDE CHEMICALLY APPLIED OR PLATED FINISHES		DRAWN	DATE	FINAL APPROVAL	DATE
		G.B	6-6-66		
		CHECKED	DATE		
		J.H.	11/11/66		11/16/66
		ELECT. DES.	DATE		
		MECH. DES.	DATE		
DECIMALS .X ± .05 .XX ± .01 .XXX ± .005		FRACTIONS ± 1/64 ANGLES ± 0° 30'		SHEET SW415	
TOLERANCES				REV. LTR. B	