

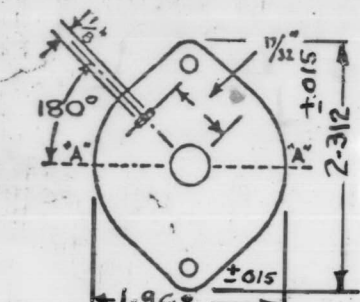
CUSTOMER'S SW413A
PART NO.

TECHNICAL MATERIAL CORP.

(L) DL
(Circle Type Desired)
3/8" x 32 A.N.S. THREAD

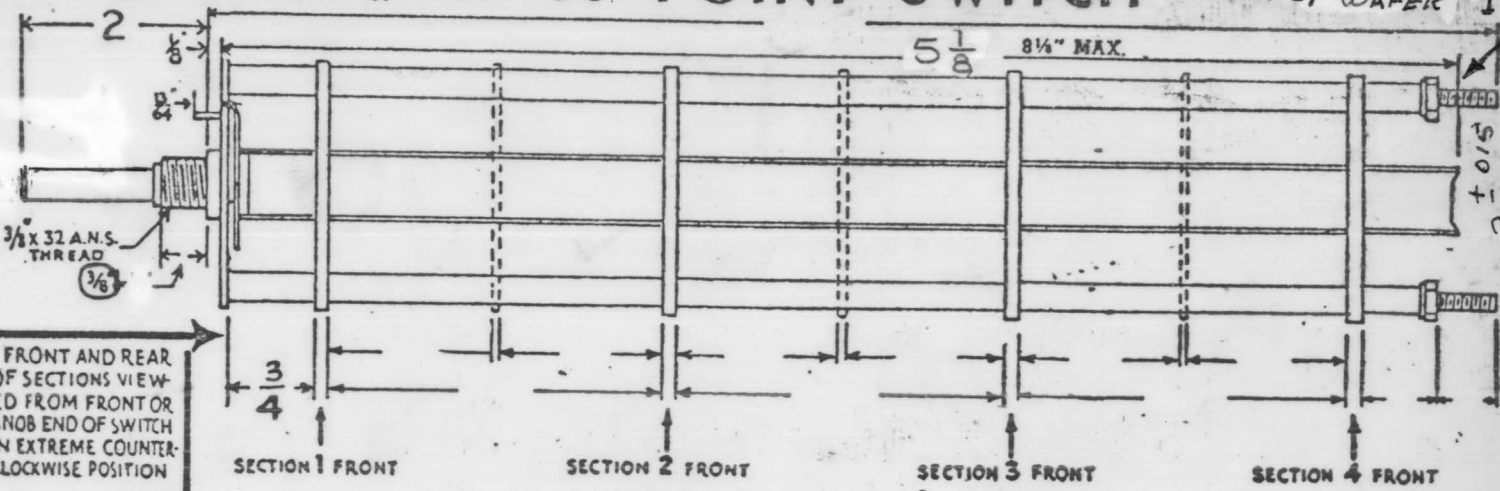
18 POINT SWITCH

NOT INSTALLED AGAINST WAFER #1



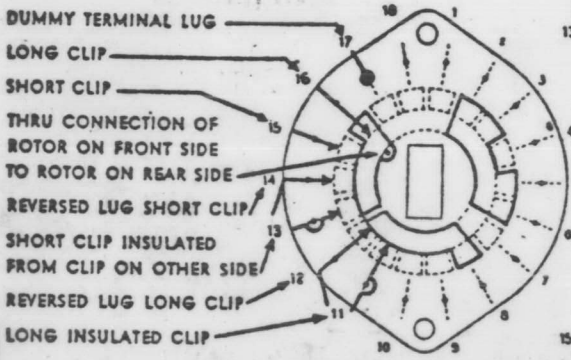
DRAW IN FLAT ON ABOVE SHAFT IN EXTREME COUNTER CLOCKWISE POSITION AND SHOW ANGLE IN REFERENCE TO LINE "A-A"

FRONT AND REAR OF SECTIONS VIEWED FROM FRONT OR KNOB END OF SWITCH IN EXTREME COUNTER-CLOCKWISE POSITION

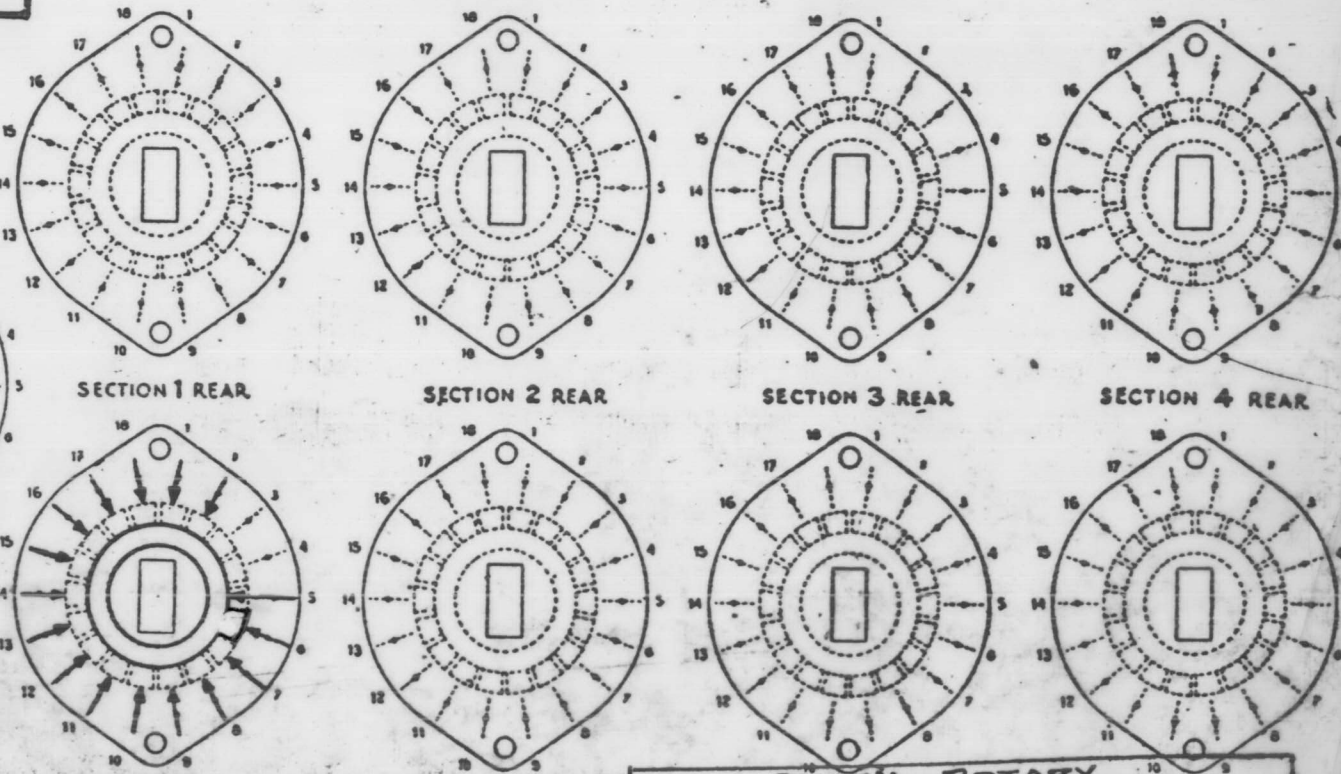


NUMBER OF SECTIONS 1
NUMBER OF POSITIONS 15

SYMBOLS USED IN MARKING PRINT



OUTLINE ROTOR BLADES AS SHOWN ABOVE WITH SWITCH IN EXTREME COUNTER-CLOCKWISE POSITION
TYPE L HAS CONTACTS MOUNTED BY A SINGLE EYELET.
SECTION IS OVAL 1 1/4" x 2 1/8"



CHECK ALL SPECIFICATIONS BELOW.

SHORTING TYPE CONTACTS NON-SHORTING
 IF NOT SPECIFIED SHORTING TYPE WILL BE SUPPLIED.
 INSULATION: 3/4" BAKELITE SPECIFY IMPREGNATION IF REQUIRED _____
 CONTACTS AND ROTORS: SILVER PLATED BRASS SOLID SILVER ALLOY IF NOT SPECIFIED SILVER PLATED BRASS WILL BE SUPPLIED.
 MOUNTING HARDWARE: SUPPLY 1 3/8" - 32 NUTS 1/2" ACROSS FLATS; MATERIAL STEEL PLATING C.A.D.
 — 3/8" INTERNAL TOOTH LOCKWASHER; MATERIAL " PLATING "
 STAMP PART NUMBER SW413 ON FRONT PLATE, YES NO

SWITCH: ROTARY
SBE-8, SBE-9, SBE-10

THE TECHNICAL MATERIAL CORPORATION
MAMARONECK, NEW YORK

DATE 5-17-66 CHKD. [Signature]
 DRAWN [Signature] APPD. [Signature]
 SHEET 1 OF 1 NO. SW413LA

REV. CHANGE	DATE	CH. NO.	CHK.	APP.
A	5/18 WAS 5/14	9/29/66	16942	QC

ML 29/18