

DESG.	DIMENSION	TOL. ±	REMARKS
A	1 61/64	1/32	Foot mount only
B	1 3/8		Foot mount only
C			Flange mount only
D			Flange mount only
E	2 3/8		Max. over clips
F	2 17/32		From rear plate to shaft end
G	6 27/32		Total length for foot mount
H	5 3/4		Foot mount only
J	1 3/16		
K	23/32		
L	3/8		Last wafer to rear plate
M	6 5/16	Y	Total length (to end of rear plate)
N	1 9/16	1/32	Size 3-1 5/32 Size 5-1 9/16

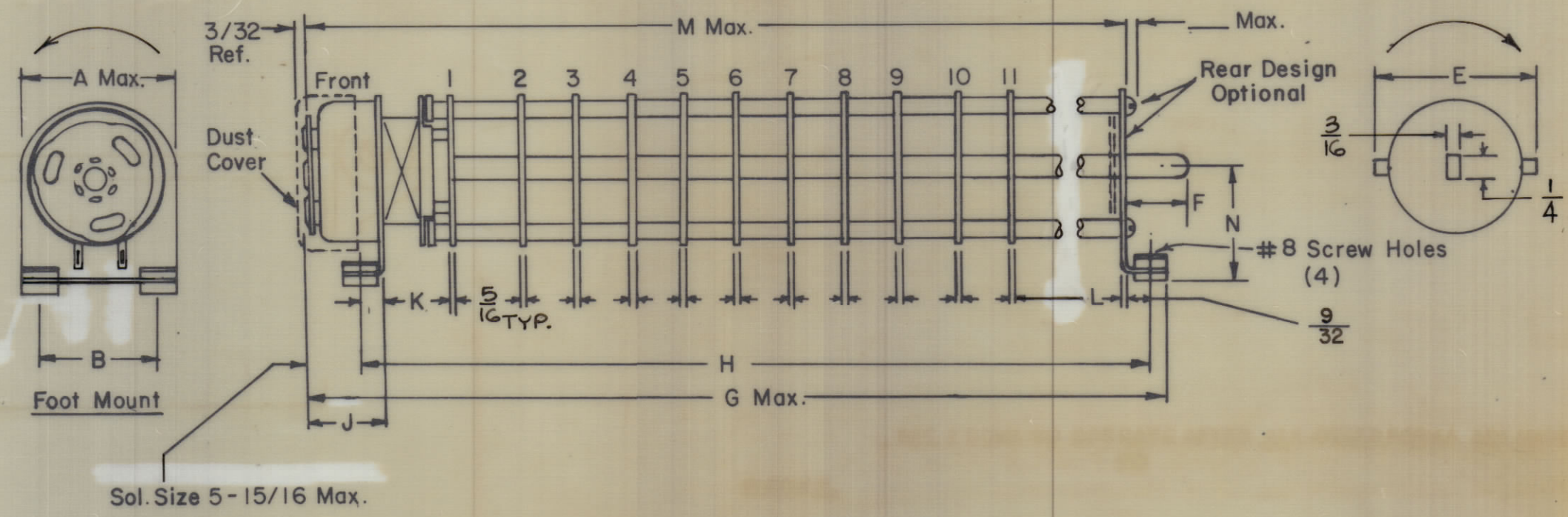
REVISIONS						
ZONE	SYM	DESCRIPTION	DATE	E.M.N. NO.	DRAFT	CHKD
	X ₁	ADD. DIMS., SWITCH & COIL SPEC.	9-8-65	X ₁	HLA	
	Ø	ORIGINAL RELEASE FOR PRODUCTION	9/9/65	Ø	ZLV	

Switch Specifications

Mechanical
 Rotation of Solenoid (viewed from solenoid end): CW ___ CCW **X**
 No. of sections: 11
 No. of positions: 12
 Angle of throw: 30°
 Type Mounting: Flange ___ Foot **X**
 Solenoid Connections: Solder lug

Contacts:
 Shorting type, Sections 1 & 2
 Non-shorting, Sections 3 THRU 11
 Silver plated Brass
 Silver alloy **X**

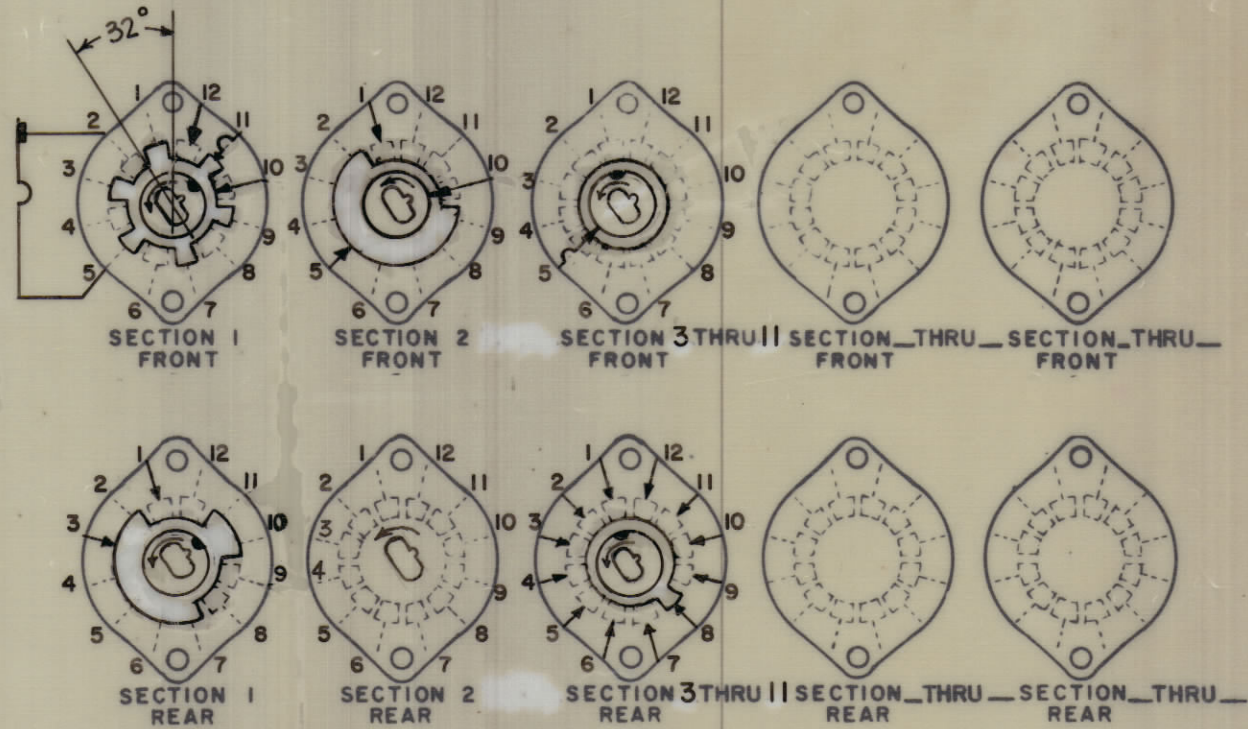
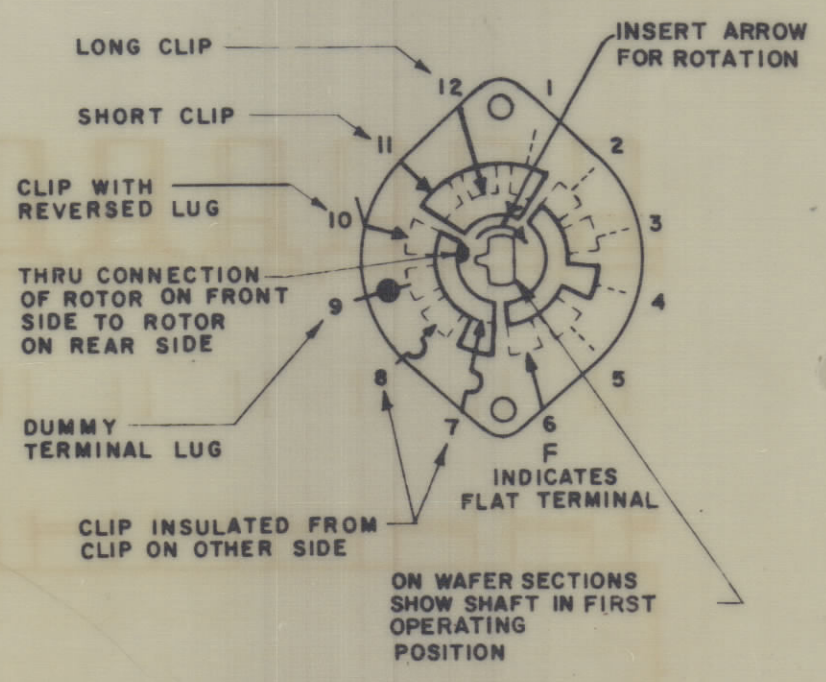
Wafer material: ___ Other BAKELITE
 Finish: Comm. **X**, 50hr. ___ OR 200hr. ___ salt spray
 Opr. temp.: 0-100° C
Wafer Type: ___
Electrical Specs.
 Current rating: Carry 10-15 amps resistive max. 115 VAC
 Break @ 24 volts: ___ amp resistive max.
 Break @ 115 volts: ___ amp resistive max.
 Dielectric Strength: 1000v clip to clip, 500v insulated clips back to back.



Coil Specifications

Solenoid Size: 5B
 Coil Resistance @ 20° C.: 107 Ω ± 10%
 Voltage: 115 VAC
 Gross Starting Torque @ 20° C.: 4.1 LB. INCHES
 Duty Cycle: 1/4 AT 95VDC
 Rotary Stroke Angle: 35°
 Electric Strength: 1200 VRMS
 Dust Cover: NONE

- NOTES:**
- View wafers from solenoid end of switch.
 - Rear side of wafer viewed as if looking through wafers, from solenoid end.
 - Orientation of wafer is with Pin 1 in the one o'clock or twelve o'clock position, according to rotation, as viewed from the solenoid end with solenoid connecting wires or terminals facing down.
 - Rotation is in direction of arrow viewed from solenoid end.
 - Wafers shown in No. 1 or first operating position.



SYMBOLS USED IN MARKING PRINT

SW408

VLRE-1		
Q'TY/UNIT	MODEL USED ON	ASS'Y. NO.
—	C	S401-281

THE CONTENTS OF THIS DRAWING ARE THE EXCLUSIVE PROPERTY OF THE TECHNICAL MATERIEL CORP. ITS UNAUTHORIZED USE OR REPRODUCTION IN WHOLE OR IN PART IS STRICTLY FORBIDDEN.

REQ'D.	ITEM	PART NUMBER	DESCRIPTION	SYMBOL
ZETENA LIST OF MATERIAL				
MATERIAL		THE TECHNICAL MATERIEL CORP. MAMARONECK, NEW YORK		
FINISH		TITLE SWITCH, ROTARY, SOLENOID 12 POSITION		
UNLESS OTHERWISE SPECIFIED DIMENSIONS ARE IN INCHES AND INCLUDE CHEMICALLY APPLIED OR PLATED FINISHES	DRAWN A. AUSTIN	DATE 8-3-65	FINAL APPROVAL <i>[Signature]</i>	DATE 9/9/65
DECIMALS .X ± .05 .XX ± .01 .XXX ± .005	CHECKED <i>[Signature]</i>	DATE 9/9/65	DATE 9/9/65	DATE 9/9/65
TOLERANCES	ELECT. DES. <i>[Signature]</i>	DATE 9-9-65	DATE 9-9-65	DATE 9-9-65
FRACTIONS ± ANGLES ± 0° 30'	MECH. DES. <i>[Signature]</i>	DATE 9-9-65	DATE 9-9-65	DATE 9-9-65
			SW408	

NOTES