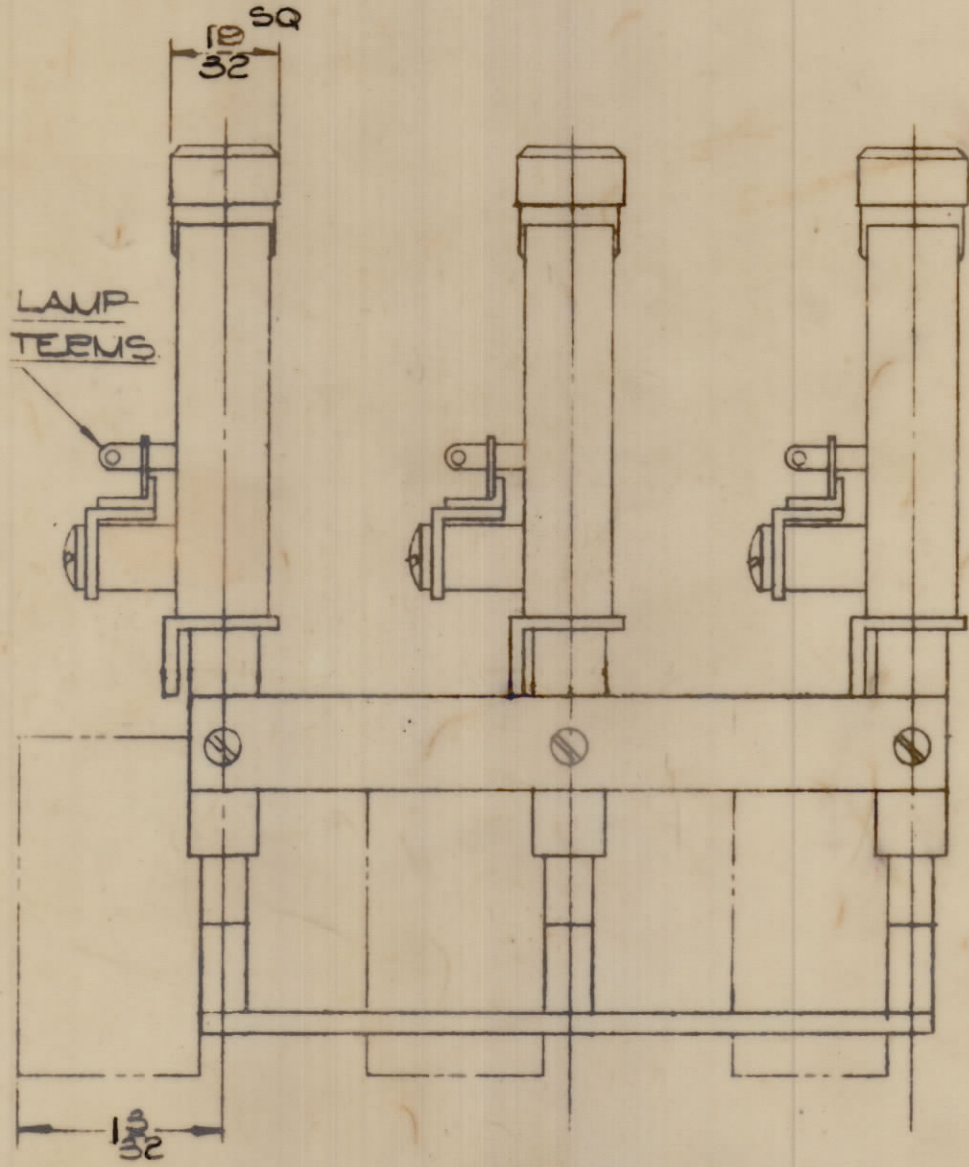
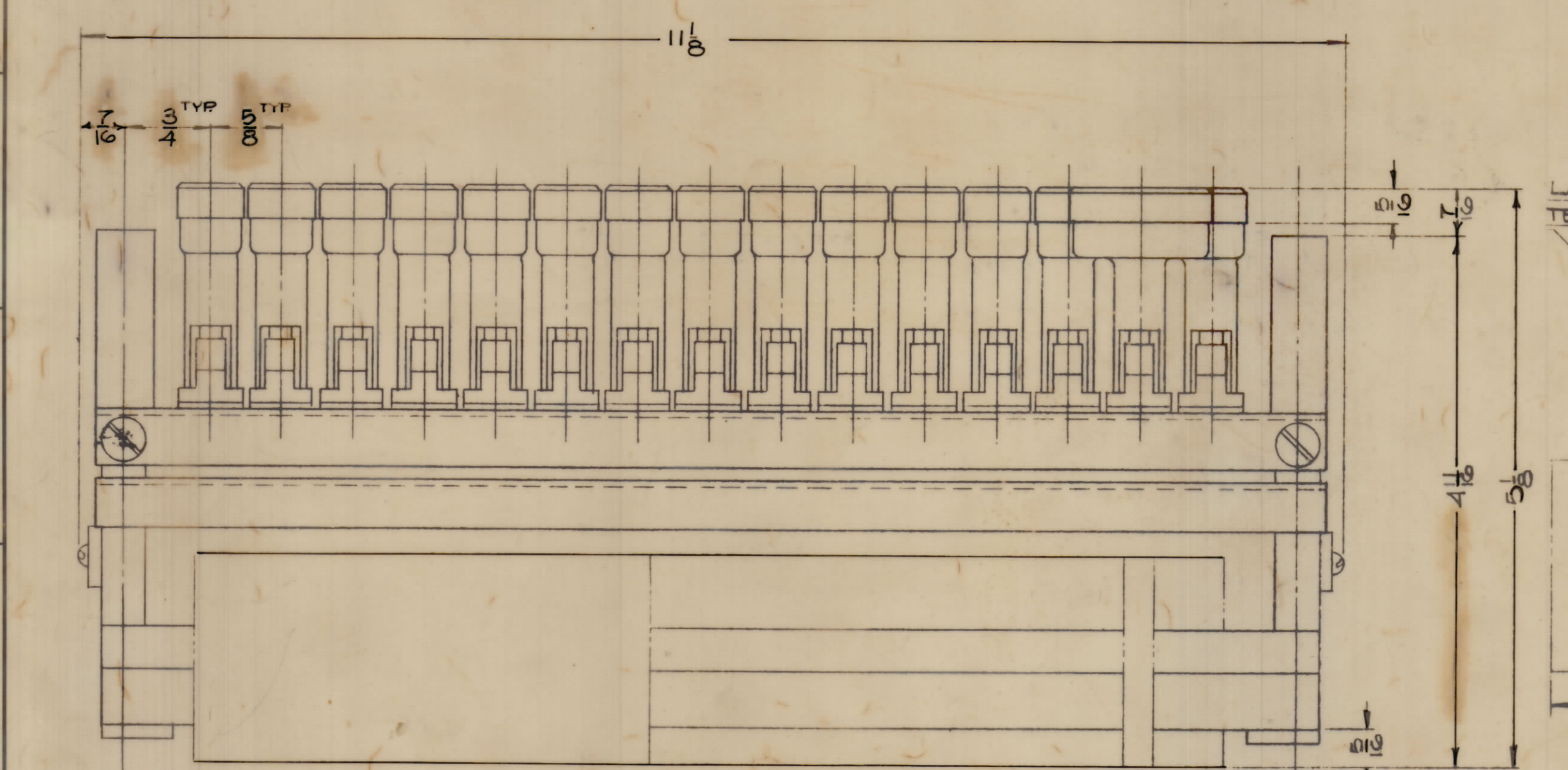
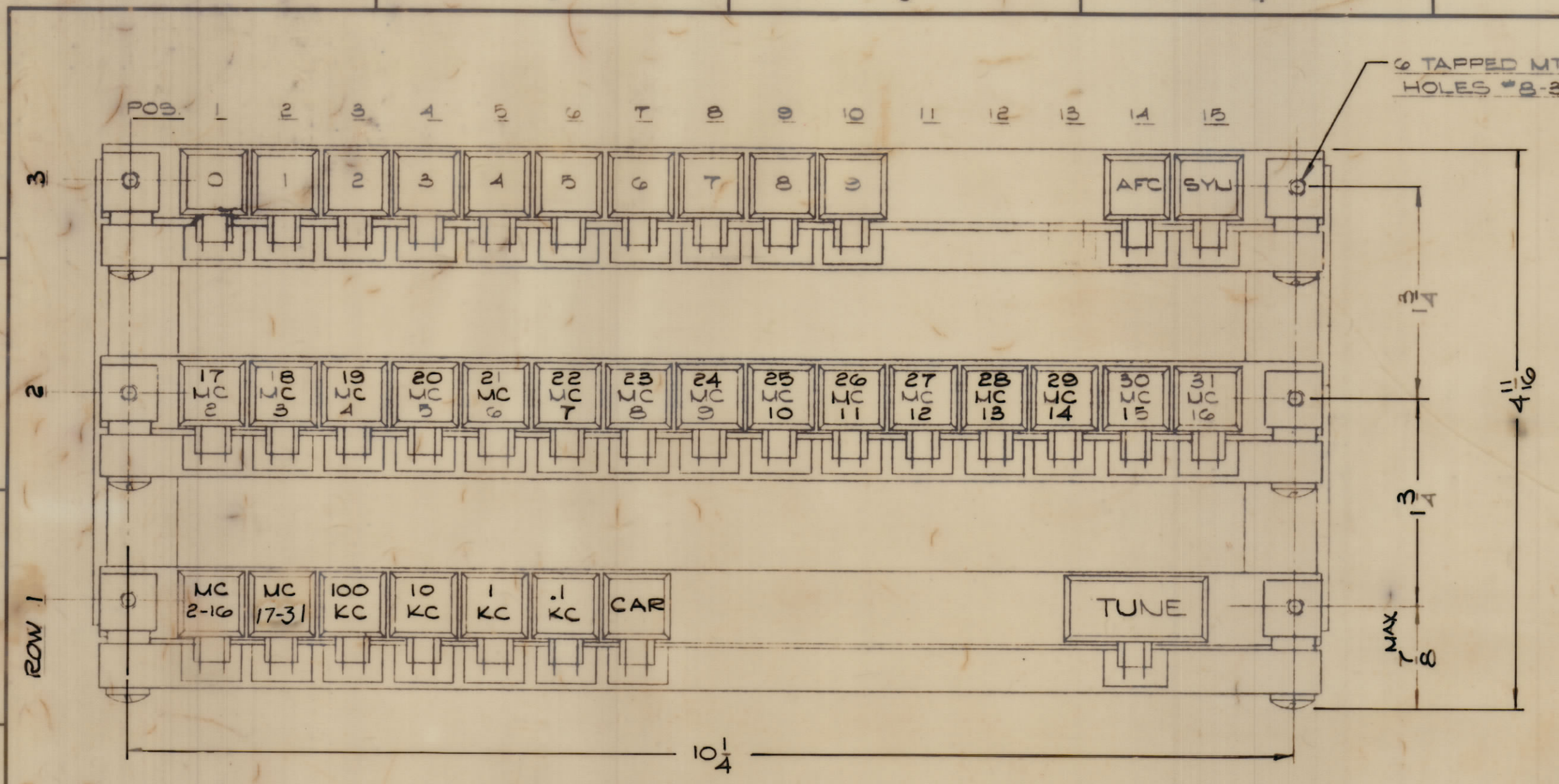


REVISIONS						
ZONE	SYM	DESCRIPTION	DATE	E.N.N. NO.	DRAFT	CHKD
		ORIGINAL RELEASE FOR PRODUCTION	7-9-65			
G2	A	NOTES REVISED	7/9/65	14805	H.V.V.	JCB
F7	B	BUTTON IN ROW 1 POS 2 WAS MC 17-21	7/9/65	15189	H.V.V.	JCB
G2		ON NOTES: ROW 2 FIRST LINE 6A WAS 4A				

**NOTES:**

- 1- CONTACTS: TOP FORM "A" @ POS. TO OPERATE AFTER OTHER FORM "A"s ARE MADE.
- ROW 1: POS. 8-13, 15 BLANK  
6A POS. 5, 5A POS. 1, 3, 6, 7.  
4A POS. 2, 4, 2A 1B POS. 14 SEC. 1
- ROW 2: 6A POS. 8, 5A POS. 6, 7, 10, 11  
4A POS. 1, 4, 5, 9, 12, 13, 3A POS. 2, 3, 14, 15 SEC. 1
- ROW 3: POS. 11, 12, 13 BLANK  
5A POS. 7-10, 4A POS. 4, 5, 6  
3A POS. 1, 2, 3, 14, 15 SEC. 1
- 2- INTERLOCK & LOCKOUT BETWEEN ROWS
- 3- BUTTONS: WHITE, POS. 14 ROW 1 RED
- 4- POS. 14 ROW 1 MOMENTARY RELEASE FOR ASSEMBLY
- 5- SWITCH SUPPLIED W/OUT LAMPS
- 6- CONTACT RATING: 3 AMP. @ 110 VAC NON-INDUCTIVE  
1 AMP @ 24 VDC
- 7- LAMP REF: BI 110 (AS REQUIRED)
- 8- SPARE BUTTON REF: LI III



REQ'D.	ITEM	PART NUMBER	DESCRIPTION	SYMBOL
EATON LIST OF MATERIAL				
MATERIAL			THE TECHNICAL MATERIEL CORP. MAMARONECK, NEW YORK	
FINISH			TITLE SWITCH ASSEMBLY PUSHBUTTON	
DRAWN H. JUSTIN		DATE 7-8-65	FINAL APPROVAL F. E. Eaton	
CHECKED JCB		DATE 7-9-65	DATE 7/9/65	
ELECT. DES. JC		DATE 7-9-65	REV. LTR. B	
MECH. DES. W. JORDAN		DATE 7/9/65	REV. LTR. B	

Q'TY./UNIT	MODEL USED ON	ASS'Y. NO.
1	RTPF-1	
SCALE	CODE	
	C	S401-365 (12 DA-7957-759)

STANDARD DRAWING

NOTES

THE CONTENTS OF THIS DRAWING ARE THE EXCLUSIVE PROPERTY OF THE TECHNICAL MATERIEL CORP. ITS UNAUTHORIZED USE OR REPRODUCTION IN WHOLE OR IN PART IS STRICTLY FORBIDDEN.

SW407 B