

STANDARD DRAWING

DESG.	DIMENSION	TOL.	REMARK
A	7/8	±.015	SHAFT LG. FROM MTG. SURFACE
B	3/8	±.005	BUSH. LG.
C	1/16	±.015	FLAT LG. (IF REQ.)
D	1/16	±2°	FLAT ANGLE (IF REQ.)
E	1/16	±.002	FLAT (IF REQUIRED)
F	.531	±.010	KEY LOCATION (IF REQ.)
G	180°		KEY LOCATION (IF REQ.)
M	.155	±.010	
N	.125	±.093	REAR SCR. EXT.
Q	.125-.187		REAR SHAFT EXT.
R	.250		1st SEC. SPACING

TMC PART NUMBER: SW-402 STAMP ON FRONT PLATE
 FRONT PLATE SHAPE: ROUND OR OBLONG ✓
 MECHANICAL SPECIFICATIONS:
 NUMBER OF SECTIONS- 4
 NUMBER OF POSITIONS- 4
 ANGLE OF THROW- 30°
 CONTACTS:
 SHORTING TYPE, SECTIONS ~~1-2-3-4~~
 NON SHORTING TYPE, SECTIONS 1-2-3-4
 SILVER PLATED BRASS, SECTIONS
 SILVER ALLOY, SECTIONS 1-2-3-4

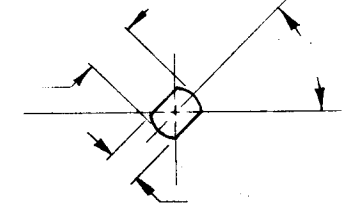
WAFERS:
 PHENOLIC, SECTIONS 1-2-3-4
 CERAMIC, SECTIONS
 MYCALEX, SECTIONS
 IMPREGNATION (IF REQ.)
 FINISH REQUIREMENTS:
 ARMY NAVY COMMERCIAL ✓
 SALT TEST (IF REQ.)

HARDWARE, TO BE SUPPLIED BY MANUFACTURER:
 1 QUAN. 3/8 -32 NUTS 1/2 ACROSS FLATS
 MATERIAL STEEL PLATING CADMIUM
 1 QUAN. 3/8 INTERNAL TOOTH LOCKWASHER
 MATERIAL STEEL PLATING CADMIUM

ELECTRICAL SPECIFICATIONS:
 MAXIMUM RATED VOLTAGE 28V.DC/110V AC
 MAXIMUM RATED CURRENT 2 AMPS/1.0 AMP BREAK
 5 AMPS CARRY

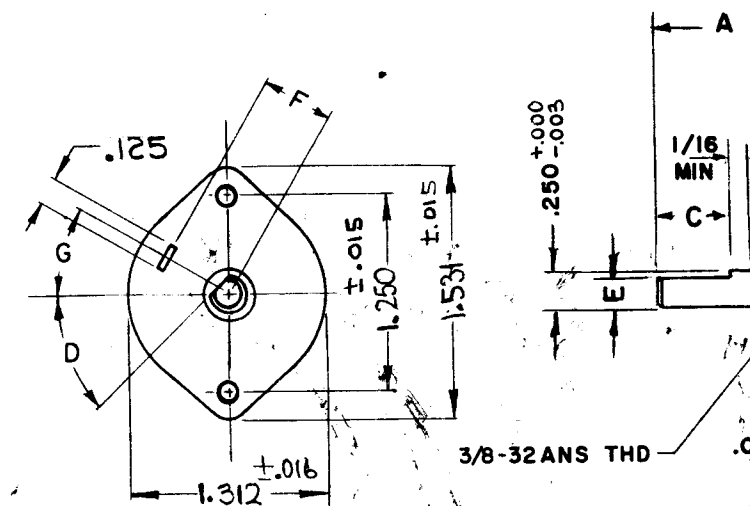
NOTE:
 FOR S401-13 ("F" TYPE) SWITCHES, THE SHAFT POSITION MUST BE SPECIFIED ON DETAIL "XX" BELOW.

SWITCH TYPE: J

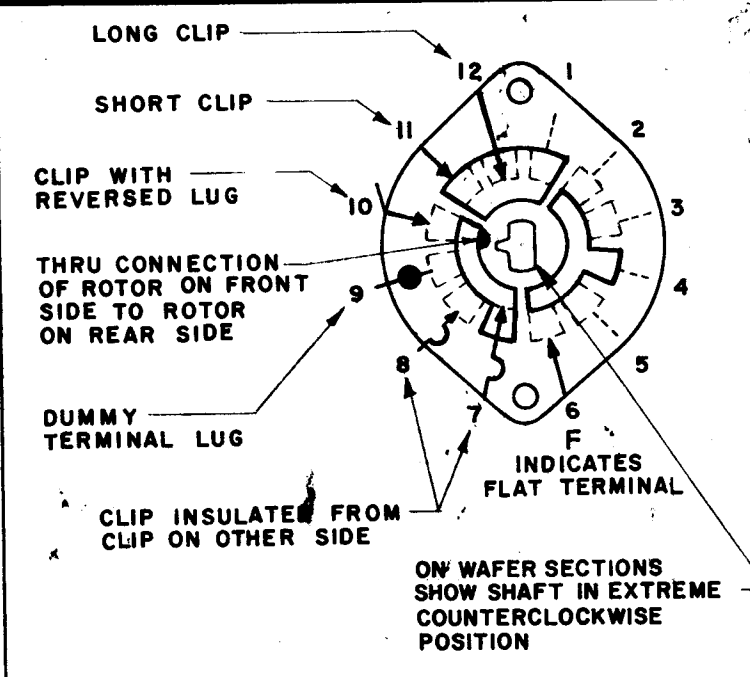


— DETAIL "XX" —

NOTES



NOTE: OBLONG TYPE FRONT PLATE SHOWN, (SEE MECHANICAL SPECIFICATION)

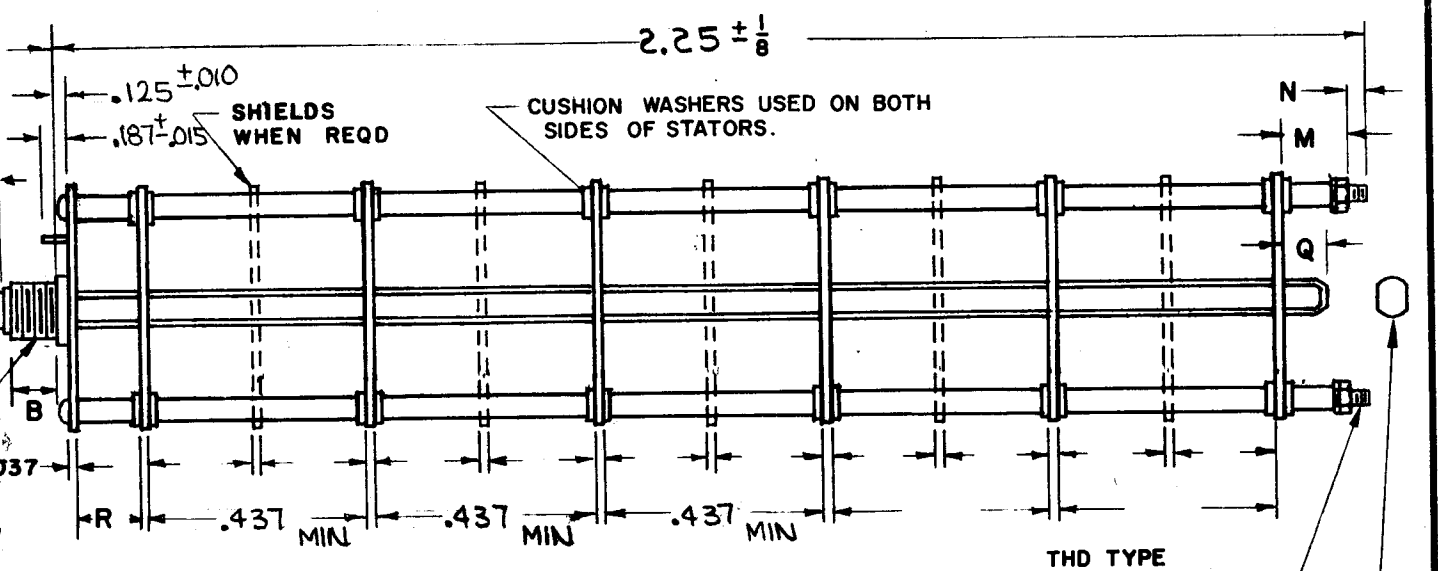


SYMBOLS USED IN MARKING PRINT

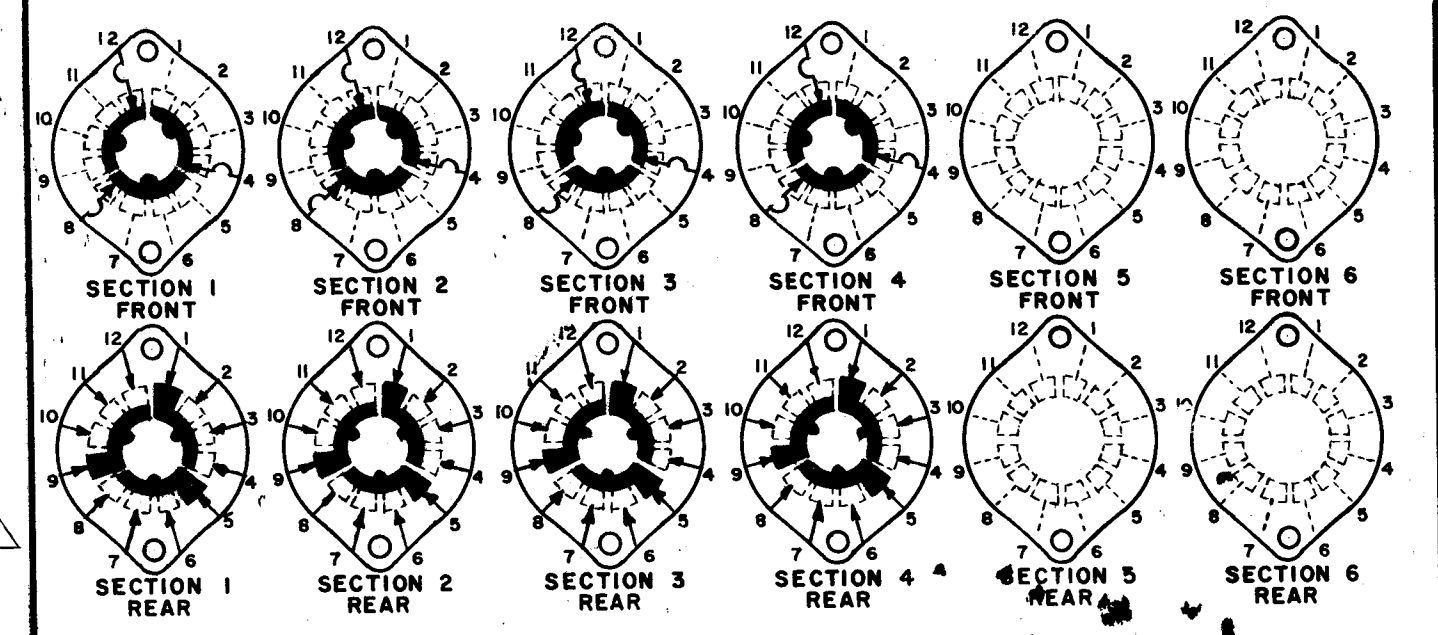
1	RTDA-1	
Q'TY./UNIT	MODEL USED ON	ASS'Y. NO.
SCALE	CODE	S401-13

THE CONTENTS OF THIS DRAWING ARE THE EXCLUSIVE PROPERTY OF THE TECHNICAL MATERIEL CORP. ITS UNAUTHORIZED USE OR REPRODUCTION IN WHOLE OR IN PART IS STRICTLY FORBIDDEN.

REVISIONS						
SYM	DESCRIPTION	DATE	E.M.N. NO.	DRAFT	CHKD	APPD
X1	1.562 WAS 1.031, 1.875 WAS 1.250	6-10-65		JC		W.J.
Ø	ORIGINAL RELEASE FOR PROD	12/20/65				MA
A	DIMENSIONS REVISED	11-1-66	17117	WJS		JC



FRONT AND REAR SECTIONS VIEWED FROM FRONT OR KNOB END OF SWITCH IN EXTREME COUNTERCLOCKWISE POSITION. SEE NOTE (DET. "XX")



SWITCH, ROTARY - 12 POINT TYPE

MATERIAL	THE TECHNICAL MATERIEL CORP. MAMARONECK, NEW YORK			
FINISH	TITLE SWITCH, ROTARY			
UNLESS OTHERWISE SPECIFIED DIMENSIONS ARE IN INCHES AND INCLUDE CHEMICALLY APPLIED OR PLATED FINISHES	DRAWN	DATE	FINAL APPROVAL	DATE
	CHECKED	DATE		
DECIMALS .X ± .05 .XX ± .01 .XXX ± .005	ELECT. DES.	DATE	SW402	A
FRACTIONS ± 1/64 ANGLES ± 0° 30'	MECH. DES.	DATE		REV. LTR.

M/L J. MUNFORD 12-17-65