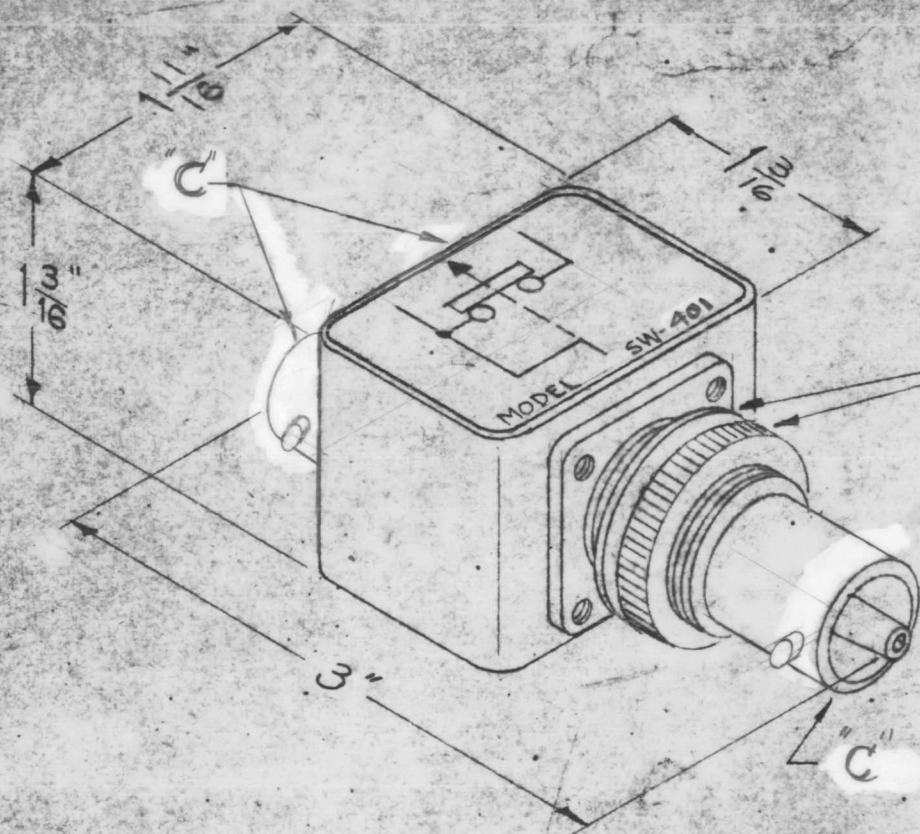


REQ. PER UNIT	USED ON		SW-401 \emptyset
	MODEL	ASSY. NO.	
	SW-401		8-26-65



SHOULDER STRAIGHT
 KNURLED
 MTG. NUT &
 INT. LOCKWASHER

NOTES:

- 1-CASE-MATERIAL-BRASS
 FINISH-SHS TMC SMOOTH
 GRAY ENAMEL.
- 2-CONNECTORS FINISH;
 BODIES-RHODIUM FLASH
 CONTACTS-GOLD FLASH
- 3-FOR MOUNTING - 13/16 DIA
 HOLE REQ.
- 4-MAX. PANEL THICKNESS 3/16

Assigned
 PATENT No. 2,767,267

							REQ. ITEM	PART NO.	DESCRIPTION	SYMBOL		
							//		THE TECHNICAL MATERIEL CORP. MAMARONECK, NEW YORK			
							STOCK SIZE					
							SEE NOTES		SWITCH, R.F., DUAL "C" to SINGLE QDS			
							MATERIAL					
							//	//	*	all	1/1/65	
TOLERANCES							SCALE: 2A-4342		DRAWN		CHECKED	FINAL APPROVAL
DEC. DIM. ± FRAC. DIM. ± ANGULAR DIM. ±							MAXIMUM ALLOWABLE TOLERANCES HAVE BEEN DETERMINED AND ANY DEVIATIONS WILL BE CAUSE FOR REJECTION. REMOVE ALL BURRS AND SHARP EDGES		TYPE & TEMPER		HEAT TREAT, SPEC.	
							SEE NOTES		DRAWN		CHECKED	FINAL APPROVAL
							FINISH & SPEC. NO.		ELEC. DES. APP.		MECH. DES. APP.	SW-401 \emptyset