

DESG.	DIMENSION	TOL.	REMARKS
A	1 11/32 MAX.		Foot mount only
B	13/16		Foot mount only
C			Flange mount only
D			Flange mount only
E	1 21/32		Max. over clips
F	3/4	1/32	From rear plate to shaft end
G			Total length for foot mount
H	1.548	1/32	Foot mount only
J			
K	21/32		
L			Last wafer to rear plate
M	2 1/2 MAX.		Total length (to end of rear plate)
N	1 5/32		Size 3-1 5/32 Size 5-1 9/16

REVISIONS						
ZONE	SYM	DESCRIPTION	DATE	E.M.N. NO.	DRAFT	CHKD
	X	DUST COVER REMOVED, NOTE D REVISED	7/28/65	H		
	Ø	ORIGINAL RELEASE FOR PRODUCTION	8/2/65			
	A	UNUSED WAFERS DELETED. FRONT VIEW PICT. NOW ROUND CONFIG. ON DIM. CHT. "A" WAS 1 5/16" "A" WAS 2 3/16". "B" WAS 5/32, "B" WAS 7/64. 7.402 10%, @ 26 VDC, NOTES ADDED	10/1/65	14942	H.V.	
	B	SEC. 1, 2 & 3 POS. 6 & 7 FRONT REV.	10.4.67	18537	H.G.	

Switch Specifications

Mechanical

Rotation of Solenoid (viewed from solenoid end): CCW ✓

No. of sections: 3
No. of positions: 12
Angle of throw: 30°

Type Mounting: Foot ✓
Solenoid Connections: Solder lug ✓

Contacts:
CONTROL type, Sections 1 (NOTCH HOMING)
Non-shorting, Sections 2 & 3

Silver alloy ✓
Wafer material: Phenolic ✓
Finish: Comm. ✓
Opr. temp.: 0°C to +50°C
Wafer Type: F
Electrical Specs.

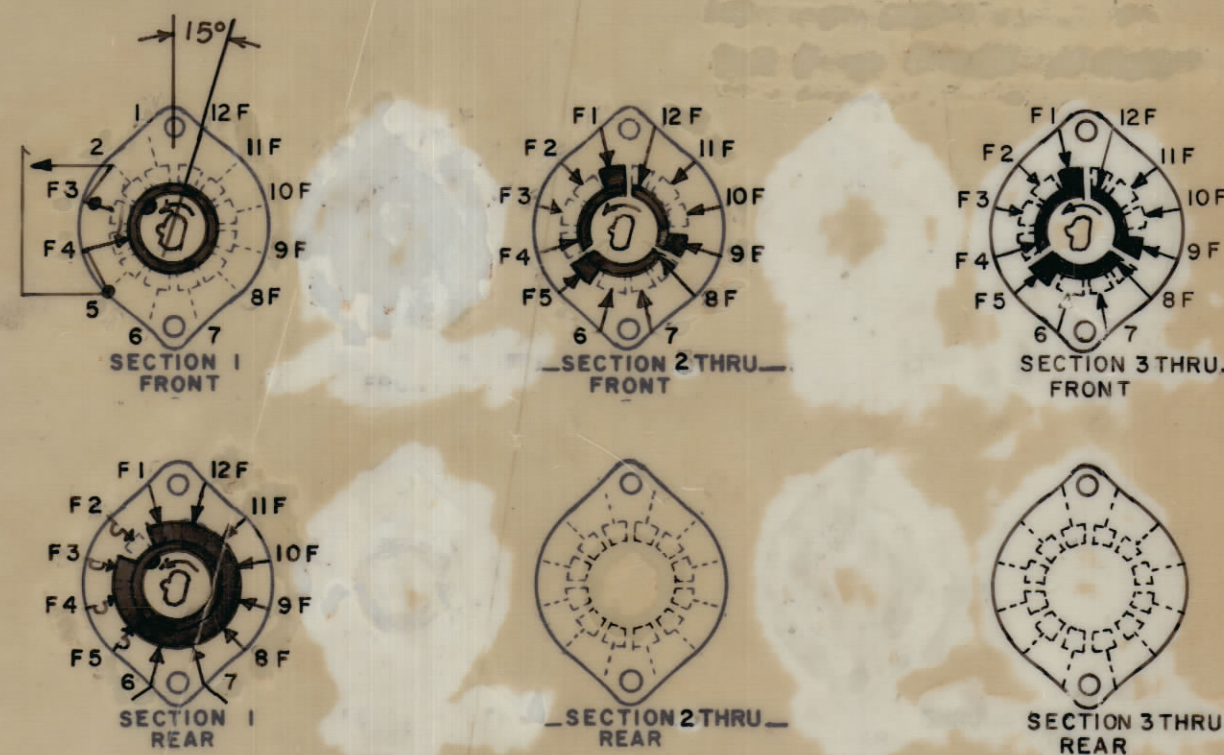
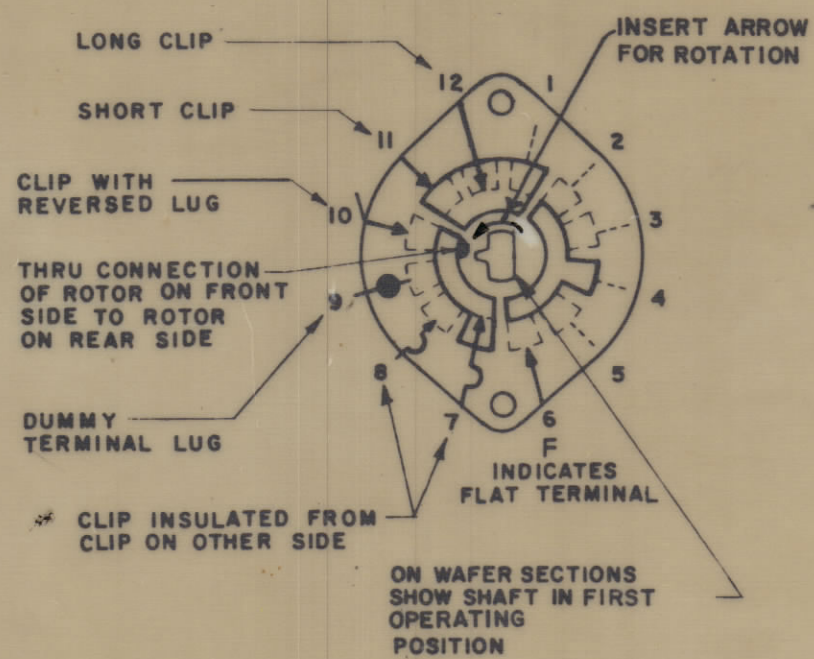
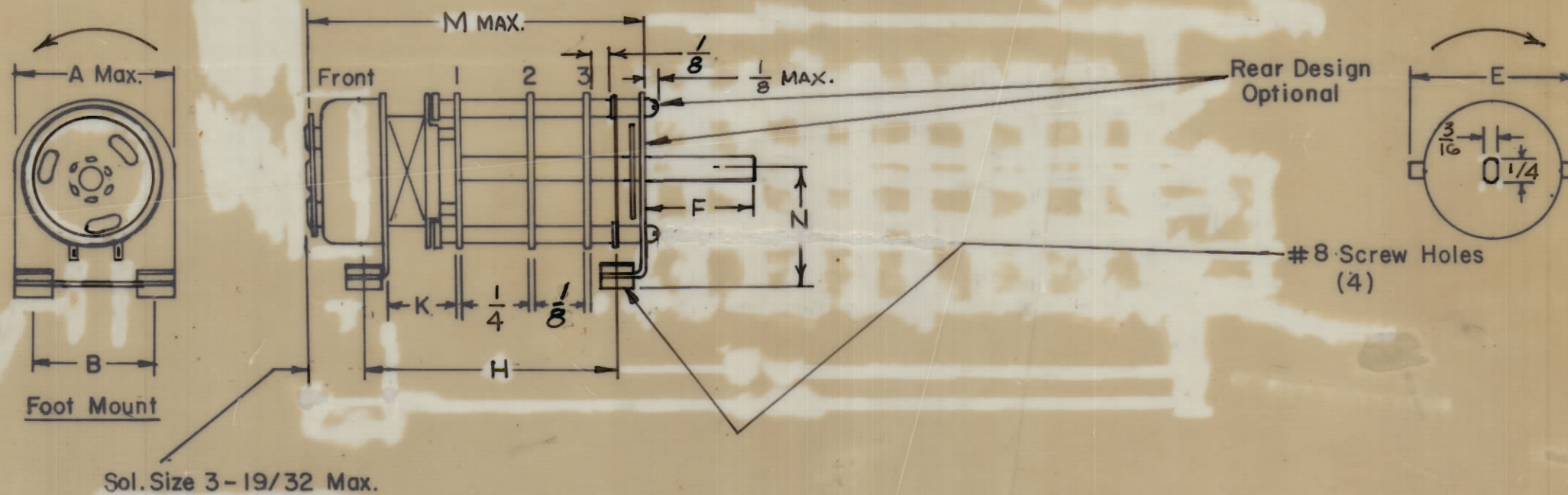
Current rating: Carry 5 amps resistive max.
Break @ 24 volts: 2 amp resistive max.
Break @ 115 volts: 1 amp resistive max.
Dielectric Strength: 1000v clip to clip, 500v insulated clips back to back.

Coil Specifications

Solenoid Size: 3B
Coil Resistance @ 20° C.: 7.40 ± 10%
Voltage: 24 To 30VDC
Gross Starting Torque @ 20° C.: 2 LB. IN. @ 26VDC
Duty Cycle: 1/10
Rotary Stroke Angle: 35°
Electric Strength: 1200 VRMS
Dust Cover: w/out ✓

NOTES:

- View wafers from solenoid end of switch. WITH SOLENOID TERMINALS FACE DOWN
- Rear side of wafer viewed as if looking through wafers, from solenoid end.
- Rotation is in direction of arrow viewed from solenoid end.
- Wafers shown in No. 1 or first operating position.
- SECTIONS 1, 2 & 3, PINS 6 & 7 ARE CLIPS WITH LUGS BENT TOWARDS SOLENOID.



SYMBOLS USED IN MARKING PRINT

REQ'D.	ITEM	PART NUMBER	DESCRIPTION	SYMBOL
LIST OF MATERIAL				
MATERIAL		THE TECHNICAL MATERIEL CORP. MAMARONECK, NEW YORK		
FINISH		TITLE SWITCH, ROTARY, SOLENOID 12 POSITION		
UNLESS OTHERWISE SPECIFIED DIMENSIONS ARE IN INCHES AND INCLUDE CHEMICALLY APPLIED OR PLATED FINISHES		DRAWN H. AUSTIN	DATE 7-14-65	FINAL APPROVAL DATE 8/12/65
DECIMALS X ± .05 XX ± .01 XXX ± .005	TOLERANCES	FRACTIONS ± 1/64 ANGLES	ELECT. DES. MECH. DES.	DATE 8/2/65
SW 399				B

MCGA	
QTY./UNIT	MODEL USED ON
SCALE	CODE
	C 3401-
ASSY. NO.	
THE CONTENTS OF THIS DRAWING ARE THE EXCLUSIVE PROPERTY OF THE TECHNICAL MATERIEL CORP. ITS UNAUTHORIZED USE OR REPRODUCTION IN WHOLE OR IN PART IS STRICTLY FORBIDDEN.	

NOTES

SW 399 B