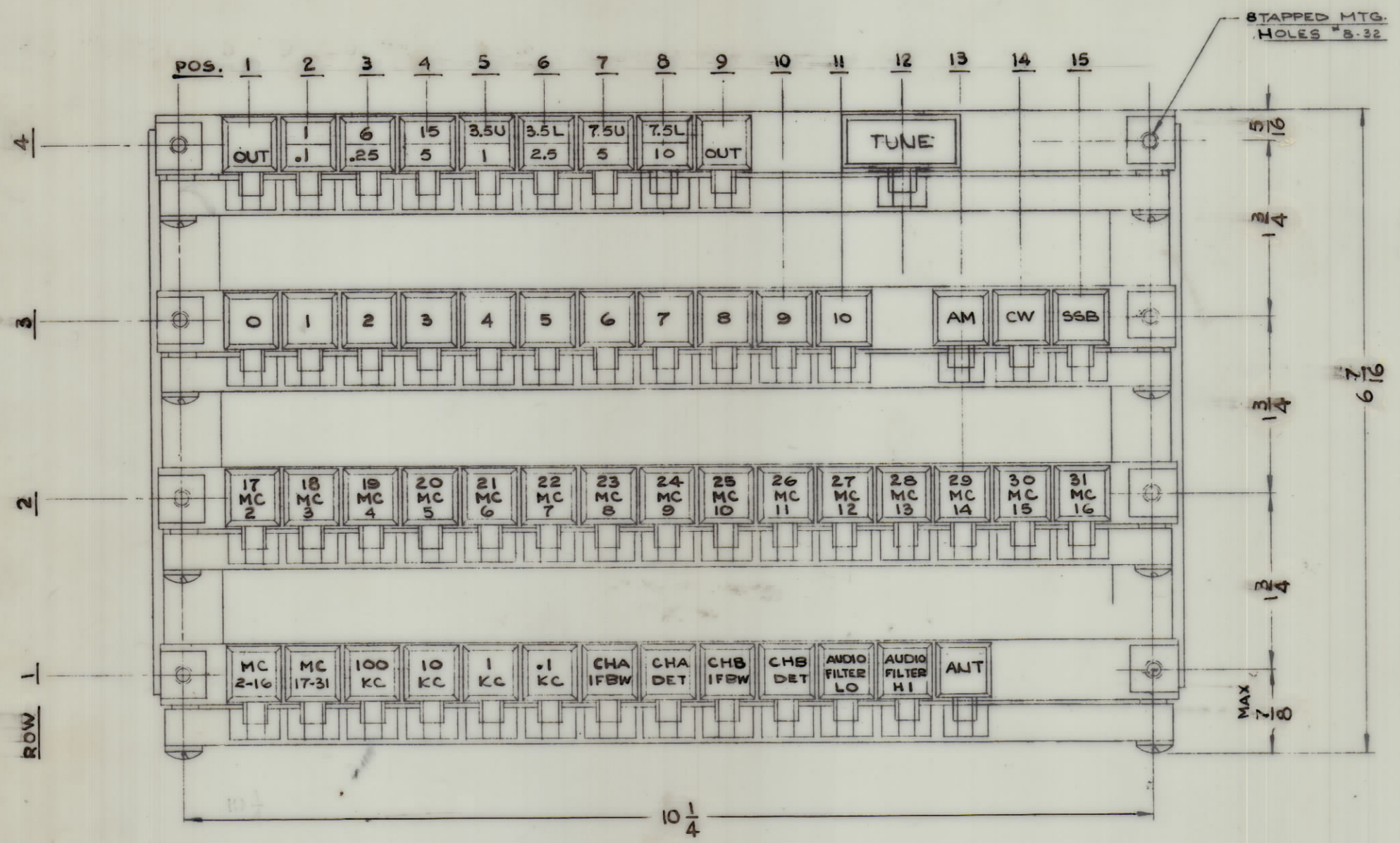


REVISIONS							
ZONE	SYM	DESCRIPTION	DATE	E.M.N. NO.	DRAFT	CHKD	APPD
	XI	NOTE # 6 ADDED	5/13/65	-M-	HCA		
	Ø	ORIGINAL RELEASE FOR PRODUCTION	5/13/65	-M-	HCA		
	A	CONTACT RATING - SPARE BUTTON - MFG. CODE ADDED	6/18/65	14-298	D.V.V.	JCB	gc

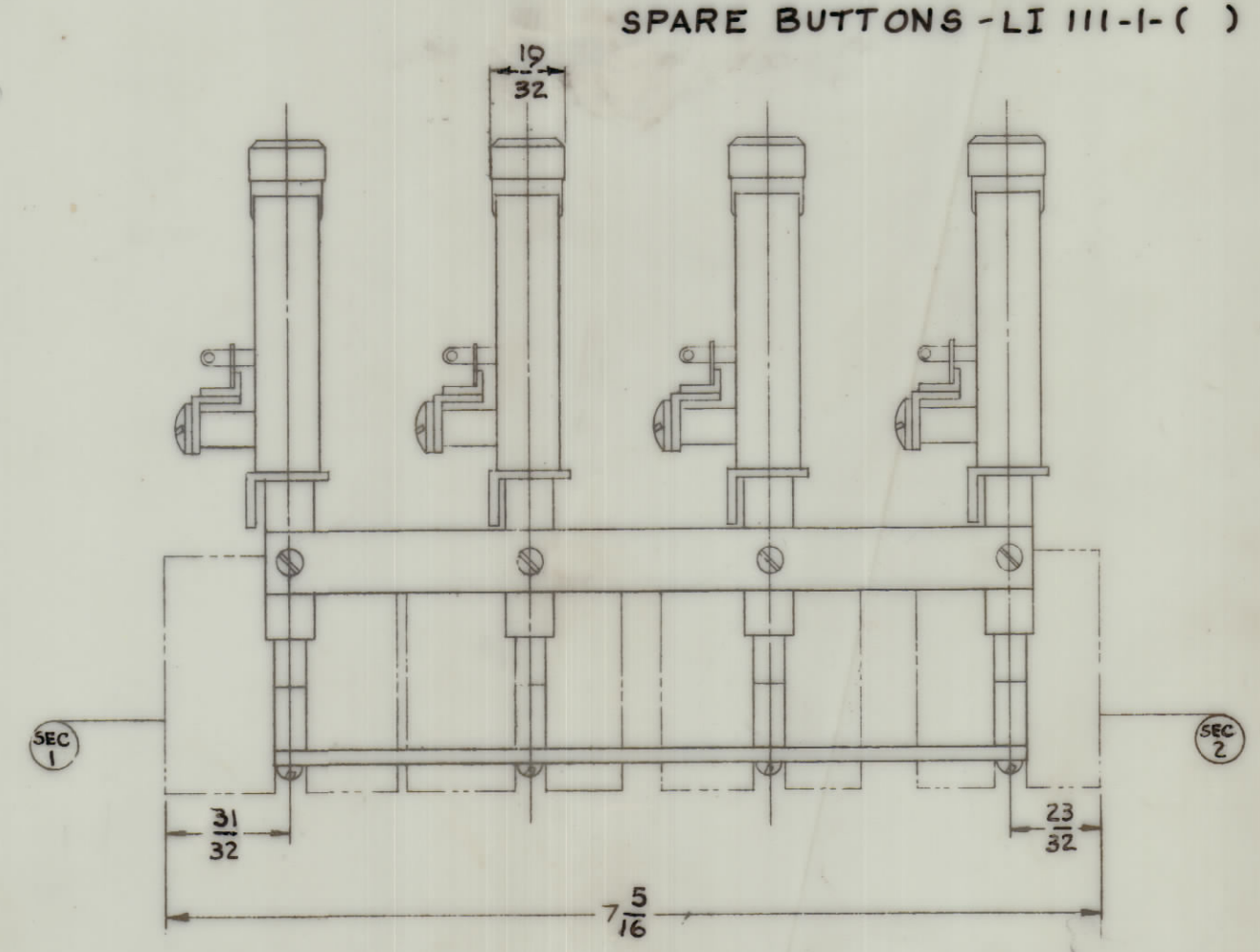
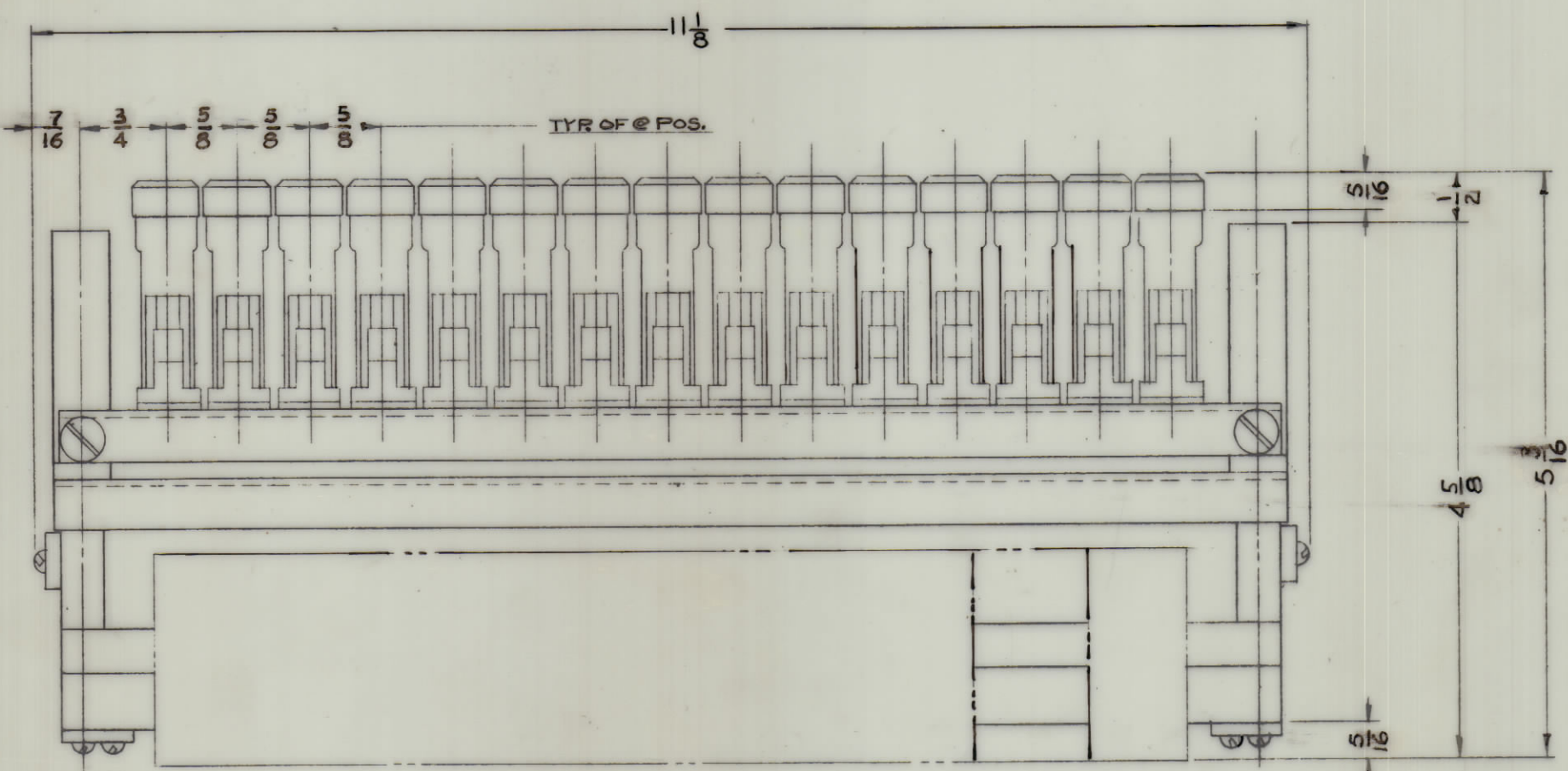


NOTES :

1 - CONTACTS : ROW 1 POS. 14, 15 BLANK  
 3A POS. 1-13 SEC. 2  
 4A POS. 5, 7, 11, 3A POS. 3, 6, 8, 10, 13  
 2A POS. 1, 4, 9, 12, 1A POS. 2 SEC. 1  
ROW 2  
 2A @ POS 3 SEC. 2  
 4A POS. 8, 3A POS. 6, 7, 10, 11  
 2A POS. 1, 4, 5, 9, 12, 13, 1A POS. 2, 3, 14, 15 SEC. 1  
ROW 3 POS. 12 BLANK  
 2A POS. 1, 2, 3, 4, 5, 6, 7, 8, 9, 10, 11, 13, 14, 15 SEC. 2  
 3A POS. 7, 8, 9, 10, 2A POS 4, 5, 6, 11  
 1A POS. 1, 2, 3, 13, 14, 15 SEC. 11  
ROW 4 POS. 10, 11, 13, 14, 15 BLANK  
 2A POS. 1-9, 1A POS 12 SEC. 2  
 3A POS. 8, 9, 2A POS. 5, 6, 7, 1A POS. 1, 2, 3, 4, 1A 18 POS. 12 SEC. 1

2-LOCKOUT 4 INTERLOCK BETWEEN ROWS  
 3- BUTTONS : WHITE TRANSLUCENT, POS. 12, ROW 4 DOUBLE RED TRANSLUCENT  
 4-TOP FORM "A" @ POS. SEC 2 TO OPERATE AFTER OTHER FORM "A'S ARE MADE  
 5. POS. 12, ROW 4 MOMENTARY ACTION (MUST RELEASE ANY PREVIOUS DEPRESSED BUTTON)  
 6- CONTACTS ON DEPRESSED BUTTON MUST BREAK BEFORE CONTACTS ON BUTTON BEING PUSHED MAKE.

CONTACT RATING: 3A @ 115VAC, NON INDUCTIVE. SWITCH SUPPLIED WITHOUT LAMPS. USE BI 110 PER REQ. VOLTAGE.



SW 395  
A

REQ'D.	ITEM	PART NUMBER	DESCRIPTION	SYMBOL
<b>EATON LIST OF MATERIAL</b>				
MATERIAL			<b>THE TECHNICAL MATERIEL CORP.</b> MAMARONECK, NEW YORK	
FINISH			TITLE <b>SWITCH ASSEMBLY</b>	
UNLESS OTHERWISE SPECIFIED DIMENSIONS ARE IN INCHES AND INCLUDE CHEMICALLY APPLIED OR PLATED FINISHES				
DECIMALS .X ± .05 .XX ± .01 .XXX ± .005	TOLERANCES		FRACTIONS ± 1/64 ANGLES ± 0° 30'	DRAWN HCA CHECKED JCB ELECT. DES. JCB MECH. DES. DATE 4-13-65 DATE 5/13/65 DATE DATE SHEET REV. LTR. A
Q'TY./UNIT SCALE #			MODEL USED ON <b>RTPE-1</b> ASS'Y. NO. <b>S401-365 (12DA-7477-759)</b>	
THE CONTENTS OF THIS DRAWING ARE THE EXCLUSIVE PROPERTY OF THE TECHNICAL MATERIEL CORP. ITS UNAUTHORIZED USE OR REPRODUCTION IN WHOLE OR IN PART IS STRICTLY FORBIDDEN.				

NOTES