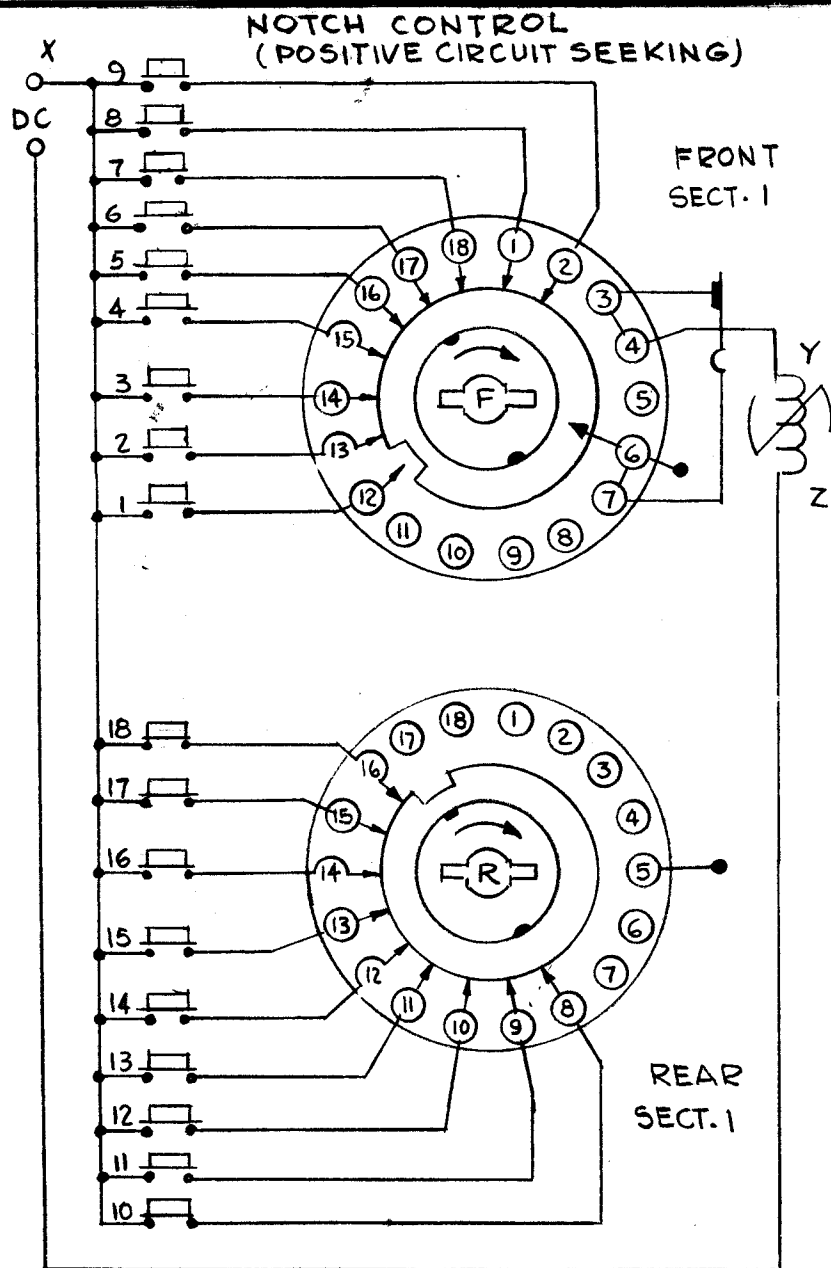
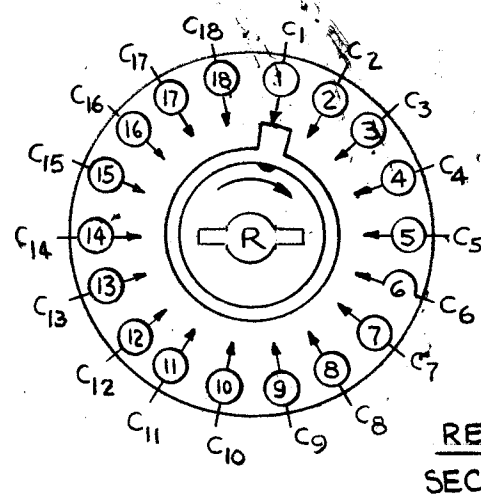
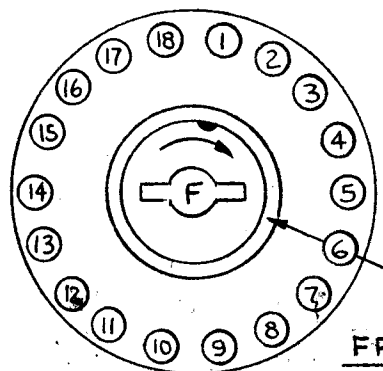


STANDARD DRAWING



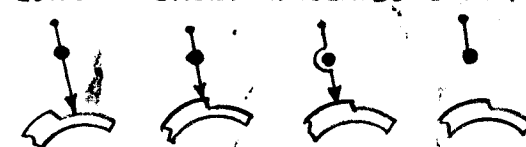
1PI8T LOAD CIRCUIT DECK



NOTE:
SECTIONS
3 THRU 10
SAME AS
SECT. 2

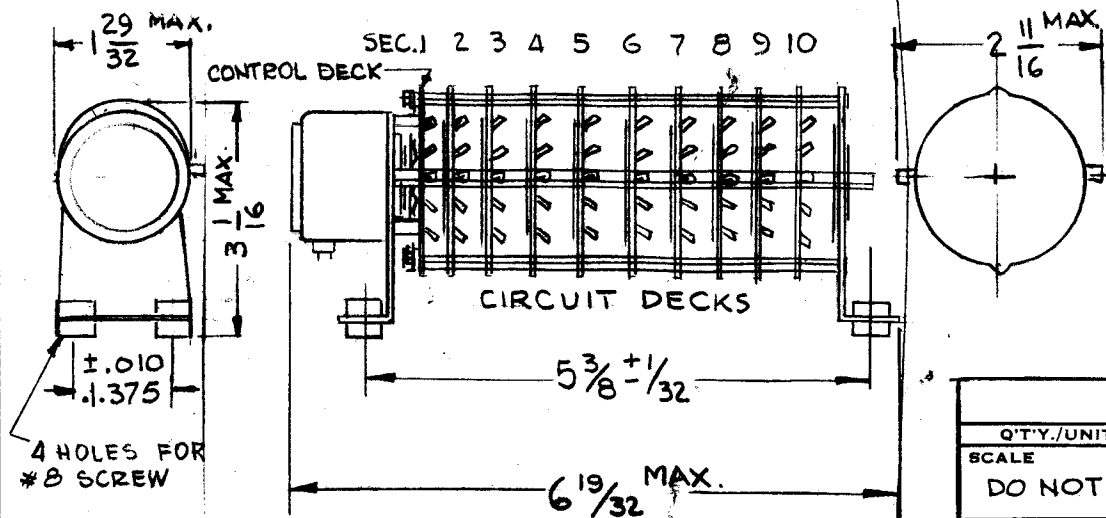
CLIP DESIGNATIONS

LONG SHORT INSULATED DUMMY



STANDARD (NO DESIGNATION (60 BEND))

THRU CONNECTION



NOTES

Q'TY./UNIT		MODEL USED ON		ASS'Y. NO.
SCALE		CODE	S401-231 (250-479-244)	
DO NOT SCALE		C		

THE CONTENTS OF THIS DRAWING ARE THE EXCLUSIVE PROPERTY OF THE TECHNICAL MATERIEL CORP. ITS UNAUTHORIZED USE OR REPRODUCTION IN WHOLE OR IN PART IS STRICTLY FORBIDDEN.

B
SW 390

REVISIONS

SYM	DESCRIPTION	DATE	E.M.N. NO.	DRAFT	CHKD	APPD
Ø	ORIGINAL RELEASE FOR PRODUCTION	4/25/65				
A	10TH DECK ADDED; PICT SECT 2 NOTE WAS "3 THRU 8, 1PI8T DECKS PLUS CNTRL CKT DECK" ADDED TO MECH. NOTES	5/18/66	16265	WPO	JPB	JC
B	ON FRONT SECT. 1, TERM'S 13 & 15 WERE REQ.; ADDED WIPER TERM. 6; ON REAR SECT. 1 TERM'S 12, 14 & 16 WERE REQ.; TERM. 5 WAS "NO TERM."	6/15/66	16400	JL	JPB	JC

SPECIFICATIONS

MECHANICAL

NO. OF SECTIONS: 9 1PI8T DECKS PLUS 1 CONTROL CKT DECK
 NO. OF POSITIONS: 18
 ANGLE OF THROW: 20°
 CONTACT MATERIAL: SOLID SILVER ALLOY
 CONTACT TYPE: SECTION 1 SPECIAL, SECT. 2 THRU 9 NON SHORTING
 WAFER MATERIAL: BAKELITE
 FINISH: 50 HOUR SALT SPRAY
 OPERATING TEMP.: -55°C TO +80°C

ELECTRICAL

CURRENT RATING: CARRY 10 TO 15 AMPS RES. MAXIMUM
 BREAK @24VDC: 5 AMPS RES. MAXIMUM
 BREAK @115VDC: 1 AMP RES. MAXIMUM
 DIELECTRIC STRENGTH: 1000V, CLIP TO CLIP, 500V INSULATED BACK TO BACK CLIPS.

COIL SPECIFICATIONS:

SOLENOID SIZE: 5B
 COIL RES.: @20°C: 8.10±10%
 VOLTAGE: 28VDC ±10%
 MAXIMUM COIL TEMPERATURE: 120°C
 COIL TO CASE DIELECTRIC TEST: 1200 VRMS

- NOTE:
- VIEW WAFERS FROM SOLENOID END OF SWITCH.
 - REAR SIDE IS VIEWED AS IF LOOKING THROUGH WAFER, FROM SOLENOID END.
 - ORIENTATION OF WAFER IS WITH PIN 1 IN THE ONE O'CLOCK POSITION AS VIEWED FROM THE SOLENOID END WITH SOLENOID CONNECTING WIRES OR TERMINALS FACING DOWN.
 - ROTATION IN DIRECTION OF ARROW VIEWED FROM SOLENOID END.
 - WAFERS SHOWN IN NO. 1 POSITION.

REQ'D.	ITEM	PART NUMBER	DESCRIPTION	SYMBOL
--------	------	-------------	-------------	--------

F. BUDETTI LIST OF MATERIAL

MATERIAL

FINISH

THE TECHNICAL MATERIEL CORP.
MAMARONECK, NEW YORK

TITLE

SWITCH, ROTARY, SOLENOID

UNLESS OTHERWISE SPECIFIED DIMENSIONS ARE IN INCHES AND INCLUDE CHEMICALLY APPLIED OR PLATED FINISHES		DRAWN	DATE	FINAL APPROVAL	DATE
DECIMALS		HB	5-1-65	[Signature]	5/21/65
TOLERANCES		CHECKED	5/25/65		SW 390
.X ± .05		ELECT. DES.	DATE	[Signature]	
.XX ± .01		MECH. DES.	5/25/65		SHEET
.XXX ± .005					