

B
SW 380

REVISIONS						
SYM	DESCRIPTION	DATE	E.M.N. NO.	DRAFT	CHKD	APPD
Ø	ORIGINAL RELEASE FOR PRODUCTION	4/19/65	Ø	Ø		
A	JUMPER 2, 3, 4, 5, D TO PIN 2, VIEW OF SHAFT ADDED CONNECTIONS OF PINS 2 & 5 DELETED. 8, 9, 10, 11, ARE INSULATOR TYPE PIN 4 WAS X PIN 2 IS INSULATOR, 5 AMPS WAS 5 TO 10 AMPS. 2 AMPS WAS 5 AMPS.	7/24/65	14507	A.V.V.	JCB	MM
B	REVISED ROTATION DIRECTION; ADDED "F" TO X ON SECT. 1 & 2 FRONT; ADDED .031 TO .786 DIM.; 2 3/8 DIM. WAS 1 3/8 MAX. SECT. 1 FRONT & REAR REVISED	2/17/66	15788	JL	JCB	J

- NOTE: 1. VIEW WAFERS FROM SOLENOID END OF SWITCH.
 2. REAR SIDE IS VIEWED AS IF LOOKING THROUGH WAFER, FROM SOLENOID END.
 3. ORIENTATION OF WAFER IS WITH PIN 1 IN THE ONE O'CLOCK POSITION AS VIEWED FROM THE SOLENOID END WITH CONNECTING WIRES OR TERMINALS FACING DOWN.
 4. ROTATION IN DIRECTION OF ARROW VIEWED FROM SOLENOID END.
 5. WAFERS SHOWN IN No. 1 POSITION.

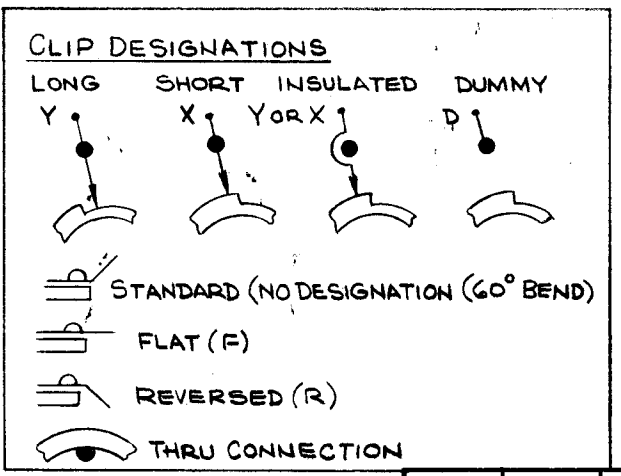
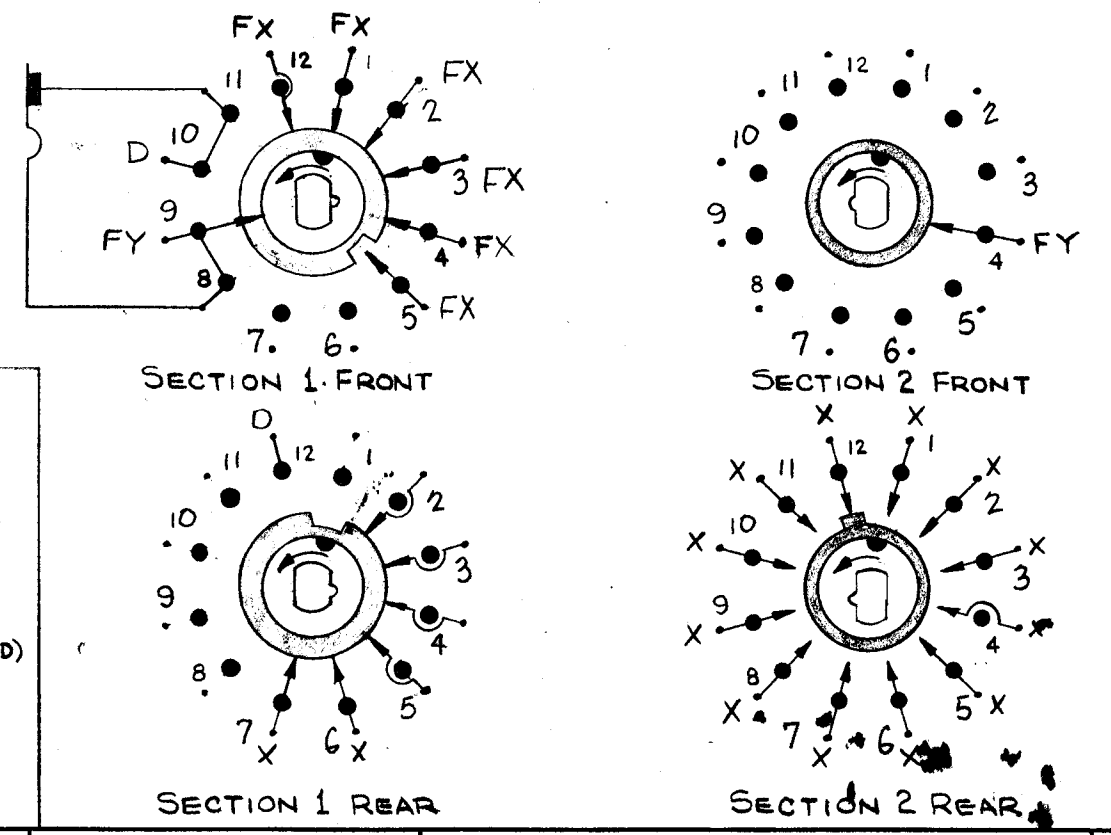
SWITCH SPECIFICATIONS

- MECHANICAL**
- NO. OF SECTIONS : 2
 - NO. OF POSITIONS : 12
 - ANGLE OF THROW : 30°
 - CONTACT MATERIAL : SOLID SILVER ALLOY
 - CONTACT TYPE : SECT. 1 SPECIAL, SECT. 2 NON-SHORTING
 - WAFER MATERIAL : BAKELITE
 - FINISH : 50 HOUR SALT SPRAY
 - OPERATING TEMP. : -55°C TO 80°C

- ELECTRICAL**
- CURRENT RATING: CARRY: 5 AMPS RESISTIVE MAX.
 - BREAK @ 24 VDC: 2 AMPS RESISTIVE MAX.
 - BREAK @ 115 VDC: 1 AMP. RESISTIVE MAX.

COIL SPECIFICATIONS

- SOLENOID SIZE : G S
- COIL RESISTANCE @ 20°C : 93.7 Ω ± 5%
- VOLTAGE : 115 VDC
- GROSS STARTING TORQUE FOR 1/5 DUTY CYCLE AND 35° STROKE - 13 POUND INCHES @ 20°C COIL TEMP.
- DIELECTRIC STRENGTH : 1200 VRMS



REQ'D.	ITEM	PART NUMBER	DESCRIPTION	SYMBOL
POSE LIST OF MATERIAL				
MATERIAL			THE TECHNICAL MATERIEL CORP. MAMARONECK, NEW YORK	
FINISH			TITLE SWITCH, ROTARY, SOLENOID	
UNLESS OTHERWISE SPECIFIED DIMENSIONS ARE IN INCHES AND INCLUDE CHEMICALLY APPLIED OR PLATED FINISHES			DRAWN H. AUSTIN CHECKED JCB ELECT. DES. J MECH. DES. J	DATE 3-10-65 DATE 3-10-65 DATE 4/19/65
DECIMALS .X ± .05 .XX ± .01 .XXX ± .005			FINAL APPROVAL SW 380 SHEET	
FRACTIONS ± 1/64 ANGLES ± 0° 30'			DATE 4/19/65 REV. LTR. B	

NOTES

THE CONTENTS OF THIS DRAWING ARE THE EXCLUSIVE PROPERTY OF THE TECHNICAL MATERIEL CORP. ITS UNAUTHORIZED USE OR REPRODUCTION IN WHOLE OR IN PART IS STRICTLY FORBIDDEN.

KIT FOR TTR-10	
Q'TY./UNIT	MODEL USED ON
SCALE	ASSY. NO.
CODE C	5401-281
	126604-001