

TMC PART NO.	MFRS. PART NO.	NUMBERS OF DECKS	NO. OF POLES PER DECK	CONT. TYPE	SHAFT STYLE	DIMENSIONS		NUMBER OF POSITIONS PER POLE
						A	B	
SW375-1	42A36-02-2-5N	2	2	NON SHORT	FLATTED	1.371	.062	5
SW375-2	42A36-02-2-3N	2	2	NON SHORT	FLATTED	1.371	.062	3

REVISIONS					
SYM	DESCRIPTION	DATE	E.M.N. NO.	DRAFT	CHKD APPD
X	EXP. RELEASE	10-27-64		G.D.L.	
Ø	ORIGINAL RELEASE FOR PRODUCTION	12-8-64	Ø	9.7.	
A	ON CHART MFRS. P/No FOR SW375-1 & 2 CLARIFIED	10-20-66	17069	G.D.L.	82 Jc
B	CHG. 20-80 OUNCE IN. TO 20-96 OUNCE IN.	12-7-70	20146	GE	W P.E.H.

SW 375

**SPECIFICATIONS**

**CURRENT RATING:** TO MAKE AND BREAK THE FOLLOWING LOADS:  
 1 AMP, 115V AC RESISTIVE; 1 AMP, 6-28V DC RESISTIVE; 1/4 AMP, 115V AC INDUCTIVE; 1/50 AMP, 115V DC INDUCTIVE; 1/10 AMP, 6-28DC INDUCTIVE; 1/10 AMP, 115V DC RESISTIVE; TO CARRY 5 AMPS CONTINUOUS.

**CONTACT RESISTANCE:** .003 OHMS INITIAL. AFTER 25,000 CYCLES OF OPERATION .020 OHMS, MAX. TYPICAL VALUES ARE IN THE RANGE OF .010 OHMS.

**INSULATION RESISTANCE:** 50,000 MEGOHMS MINIMUM (INITIALLY).

**VOLTAGE BREAKDOWN:** 1,000v AC.

**LIFE EXPECTANCY:** 100,000 OPERATIONS NORMALLY.

**STOP STRENGTH:** 15 POUND-INCHES MINIMUM.

**ROTATIONAL TORQUE:** .005 OUNCE-INCHES.

**SHAFT FLAT ORIENTATION:** FLAT OPPOSITE CONTACTING POSITION OF POLE #1 (SEE CIRCUIT DIAGRAM)

**MATERIALS AND FINISHES**

**SWITCH BASES:** MOLDED MELAMINE THERMOSETTING PLASTIC PER MIL-M-14, TYPE CMG.

**COVER, DECK SEPARATORS, END PLATE, AND ROTOR MOUNTING PLATE:** MOLDED PHENOLIC PER MIL-M-14, TYPE CFG.

**MOUNTING BUSHING AND NUTS:** BRASS, CADMIUM PLATED PER QQ-P-416 CLASS 2, TYPE II.

**RETAINING RINGS, THROUGH BOLTS, SHAFT EXTENSION, STOP WASHERS, STOP ARM, THRUST WASHERS, DETENT BALLS, COVER-PLATE, AND REAR SUPPORT PLATE:** 302 STAINLESS STEEL.

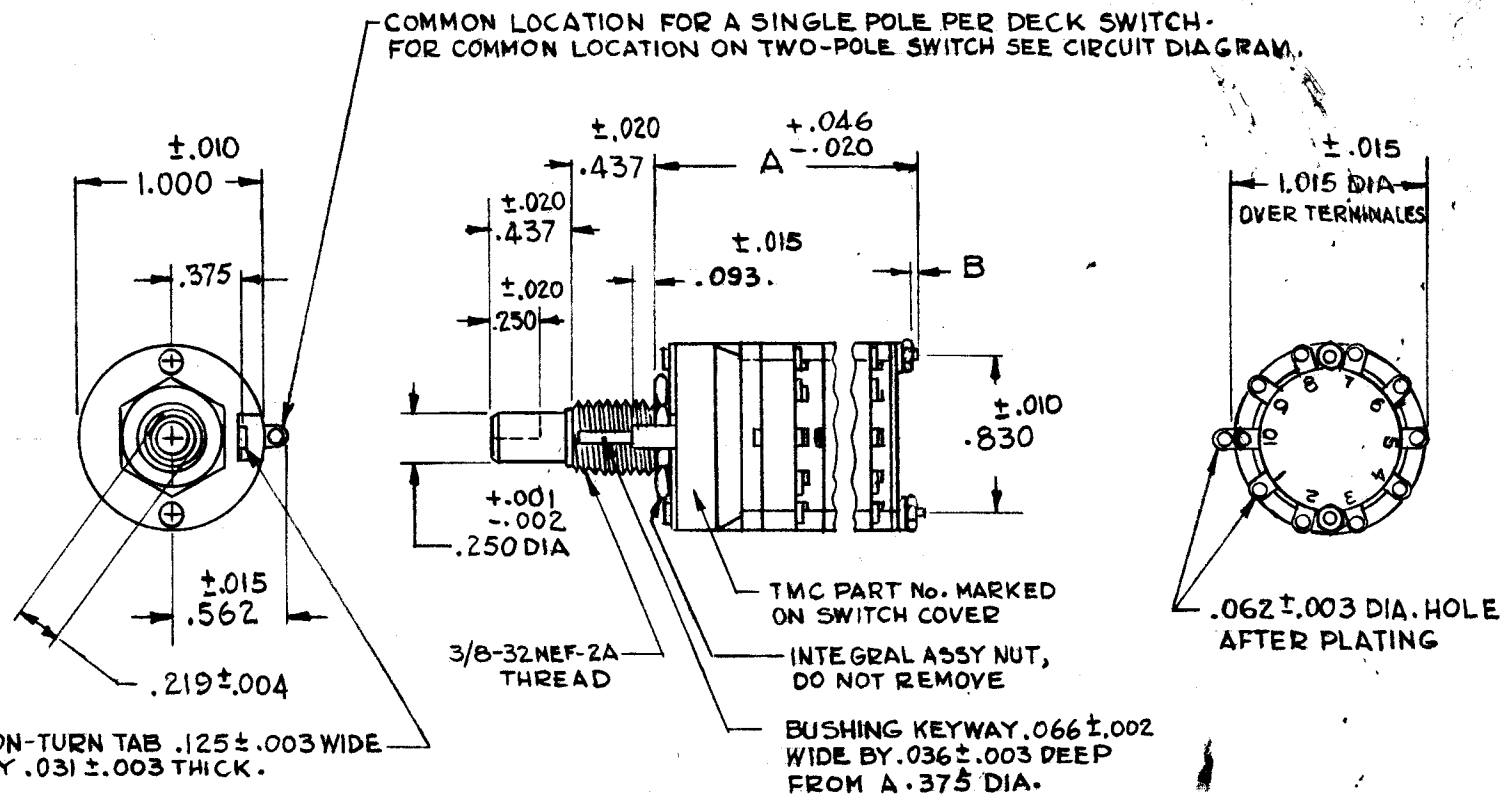
**SHAFT:** 303 STAINLESS STEEL, PASSIVATED.

**DETENT SPRINGS:** TINNED MUSIC WIRE.

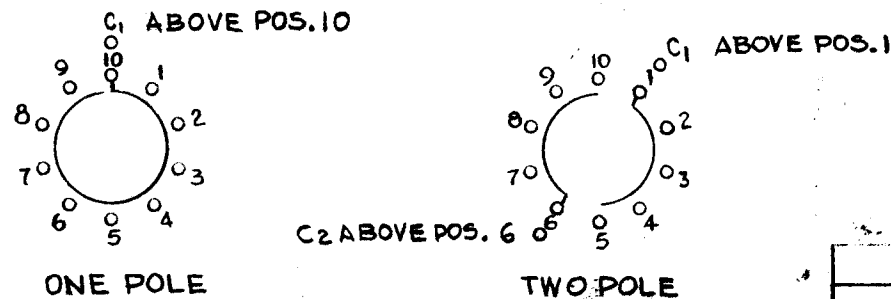
**TERMINALS, (EXCEPT COMMON):** BRASS, LEAD-TIN PLATED AND FUSED.

**ROTOR CONTACT:** SILVER ALLOY.

**STATOR (BASE) CONTACTS:** BRASS WITH SPECIAL SILVER PLATE OF .0003" MIN. THK.  
**COMMON PLATE, INCLUDING SOLDER LUG:** BRASS, SILVER PLATED .0003" TO .0005" THK.



**CIRCUIT DIAGRAM**



MOUNTING HARDWARE SUPPLIED BY VENDOR

**NOTES**

STE - 1		
SME - 1		
Q'TY./UNIT	MODEL USED ON	ASS'Y. NO.
SCALE 1:1	CODE C	S401-239
THE CONTENTS OF THIS DRAWING ARE THE EXCLUSIVE PROPERTY OF THE TECHNICAL MATERIEL CORP. ITS UNAUTHORIZED USE OR REPRODUCTION IN WHOLE OR IN PART IS STRICTLY FORBIDDEN.		

MATERIAL	SEE SPEC.	THE TECHNICAL MATERIEL CORP. MAMARONECK, NEW YORK			
FINISH	SEE SPEC.	TITLE ROTARY SWITCH			
UNLESS OTHERWISE SPECIFIED DIMENSIONS ARE IN INCHES AND INCLUDE CHEMICALLY APPLIED OR PLATED FINISHES	DRAWN	G.D.L.	DATE	10-27-64	FINAL APPROVAL RAC
	CHECKED	@	DATE	11-4-64	
DECIMALS .X ± .05 .XX ± .01 .XXX ± .005	ELECT. DES.	T.A.	DATE	11-13-64	SW 375
	MECH. DES.		DATE		
TOLERANCES					FRACTIONS ± 1/64 ANGLES ± 0° 30'
SHEET					REV. LTR. B