

SW373 A

REVISIONS					
SYM	DESCRIPTION	DATE	E.M.N. NO.	DRAFT	CHKD APPD
X	EXPER. RELEASE	11-18-64	X	<i>[Signature]</i>	
Ø	ORIGINAL RELEASE FOR PRODUCTION	12-7-64	Ø	9%	
A	PICT: 17/32 ± 1/32 WAS 1/2 ± 1/32; COIL SPECS: 5.00 WAS 6.65; ON FRONT SECT. PICT: #4 CONTACT SYM. DELE.	4/20-65	13814	2%	<i>[Signature]</i>

SWITCH SPECIFICATIONS

MECHANICAL:
 NUMBER OF SECTIONS: 1
 NUMBER OF POSITIONS: 12
 ANGLE OF THROW: 30°
 CONTACT MATERIAL: SOLID SILVER ALLOY
 WAFER MATERIAL: PHENOLIC
 FINISH: 50 HOUR SALT SPRAY

ELECTRICAL SPECIFICATIONS
 CURRENT RATING: CARRY 5 AMPS.; BREAK AMPS. RESISTIVE MAX.- 2.5 AMPS @ 24V DC ; .5 AMPS @ 115V DC.
 DIELECTRIC STRENGTH: 1000V CLIP TO CLIP;
 500V INSULATED BACK TO BACK.CLIP.

COIL SPECIFICATIONS

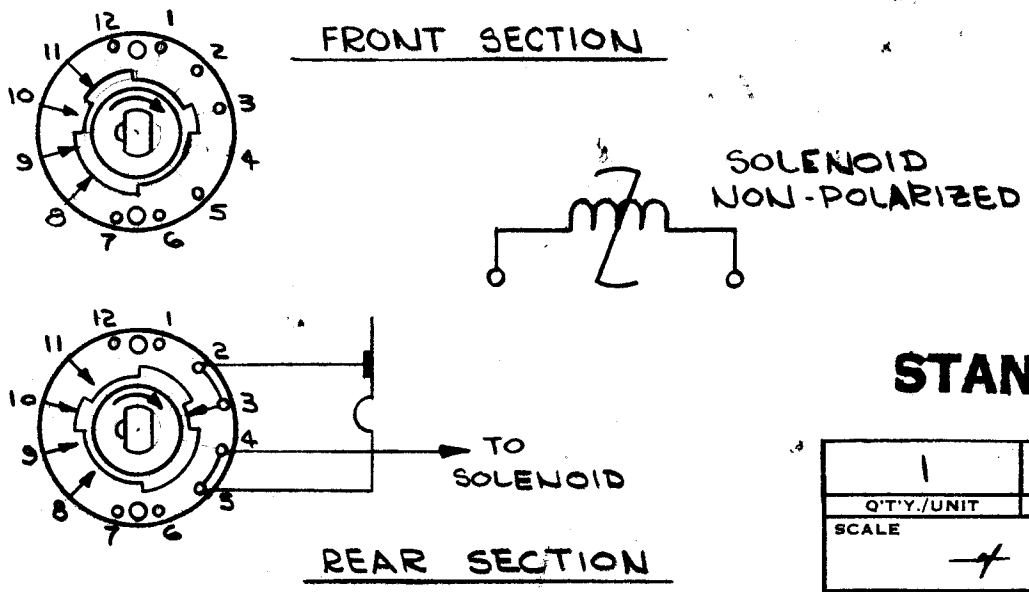
1- SOLENOID SIZE: 5B
 2- COIL RESISTANCE AT 20° C: 107 OHMS
 3- VOLTAGE: 115V DC
 4- GROSS STARTING TORQUE FOR 1/10 DUTY CYCLE AND 35° STROKE: 5.00 POUND-INCHES.

NOTE:

- 1- VIEW DECKS FROM SHAFT END OF SWITCH.
- 2- REAR SIDE IS VIEWED AS IF LOOKING THROUGH DECK, FROM SHAFT END.
- 3- ON FRONT DECK, PINS # 8 THRU # 11, ARE INTER CONNECTER TO REAR DECK.
- 4- ROTORS ARE ISOLATED FROM EACH OTHER.
- 5- ROTORS SHOWN IN #1 POSITION.

NOTE: CON'T.

- 6- ROTATION IN DIRECTION OF ARROW, VIEWED FROM SHAFT END



STANDARD DRAWING

1	TPC-11	ABS'Y. NO.
Q'TY./UNIT	MODEL USED ON	
SCALE	CODE	#124649-001 5401-281

THE CONTENTS OF THIS DRAWING ARE THE EXCLUSIVE PROPERTY OF THE TECHNICAL MATERIEL CORP. ITS UNAUTHORIZED USE OR REPRODUCTION IN WHOLE OR IN PART IS STRICTLY FORBIDDEN.

REQ'D.	ITEM	PART NUMBER	DESCRIPTION	SYMBOL
AALTONEN LIST OF MATERIAL				
MATERIAL			THE TECHNICAL MATERIEL CORP. MAMARONECK, NEW YORK	
FINISH			TITLE SWITCH - SOLENOID, ROTARY	
UNLESS OTHERWISE SPECIFIED DIMENSIONS ARE IN INCHES AND INCLUDE CHEMICALLY APPLIED OR PLATED FINISHES		DRAWN <i>[Signature]</i> CHECKED <i>[Signature]</i> DATE 11-30-64	FINAL APPROVAL <i>[Signature]</i> DATE 11/30/64	DATE
DECIMALS .X ± .05 .XX ± .01 .XXX ± .005	TOLERANCES	FRACTIONS ± 1/64 ANGLES ± 0° 30'	ELECT. DES. <i>[Signature]</i> MECH. DES. <i>[Signature]</i> DATE	SHEET SW373 A

NOTES