

DESG.	DIMENSION	TOL.	REMARK
A	1	±.015	SHAFT LG. FROM MTG. SURFACE
B	3/8	±.005	BUSH. LG.
C	1/2	±.015	FLAT LG. (IF REQ.)
D	30°	±2°	FLAT ANGLE (IF REQ.)
E	7/32	±.002	FLAT (IF REQUIRED)
F	17/32	±.010	KEY LOCATION (IF REQ.)
G	15°		KEY LOCATION (IF REQ.)
M	5/32	±.010	
N	1/8	±.093	REAR SCR. EXT.
Q	1/8	±.031	REAR SHAFT EXT.
R	9/32		1st SEC. SPACING

TMC PART NUMBER: SW-367 STAMP ON FRONT PLATE
 FRONT PLATE SHAPE: ROUND OR OBLONG ✓

MECHANICAL SPECIFICATIONS:
 NUMBER OF SECTIONS- 3
 NUMBER OF POSITIONS- 12
 ANGLE OF THROW- 30°

CONTACTS:
 SHORTING TYPE, SECTIONS 1, 2 & 3
 NON SHORTING TYPE, SECTIONS NONE
 SILVER PLATED BRASS, SECTIONS
 SILVER ALLOY, SECTIONS 3

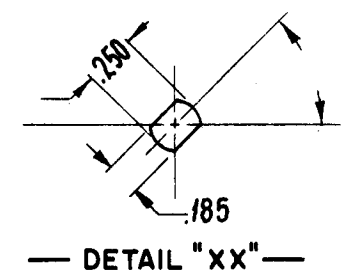
WAFERS:
 BAKELITE, SECTIONS
 CERAMIC, SECTIONS 3
 MYCALEX, SECTIONS
 IMPREGNATION (IF REQ.)

FINISH REQUIREMENTS:
 ARMY NAVY ✓ COMMERCIAL
 SALT TEST (IF REQ.)

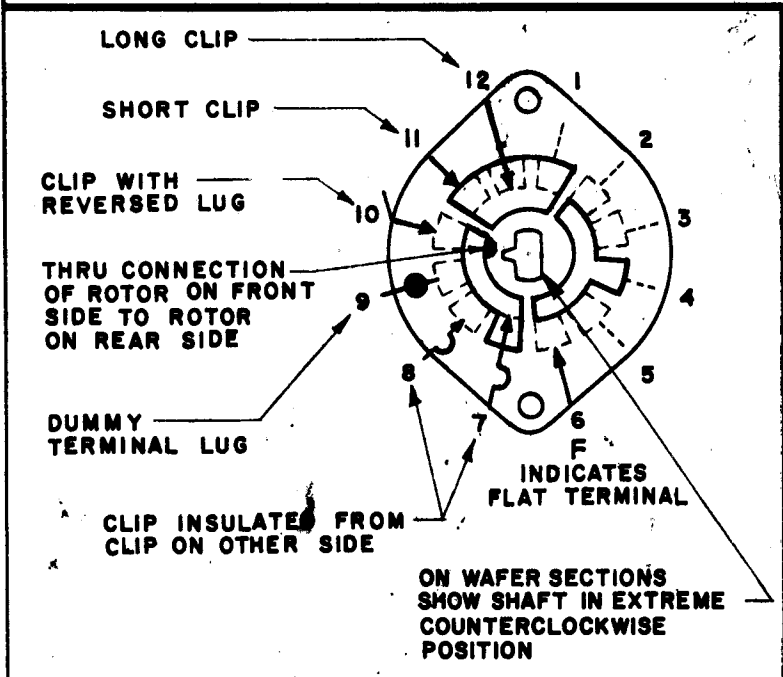
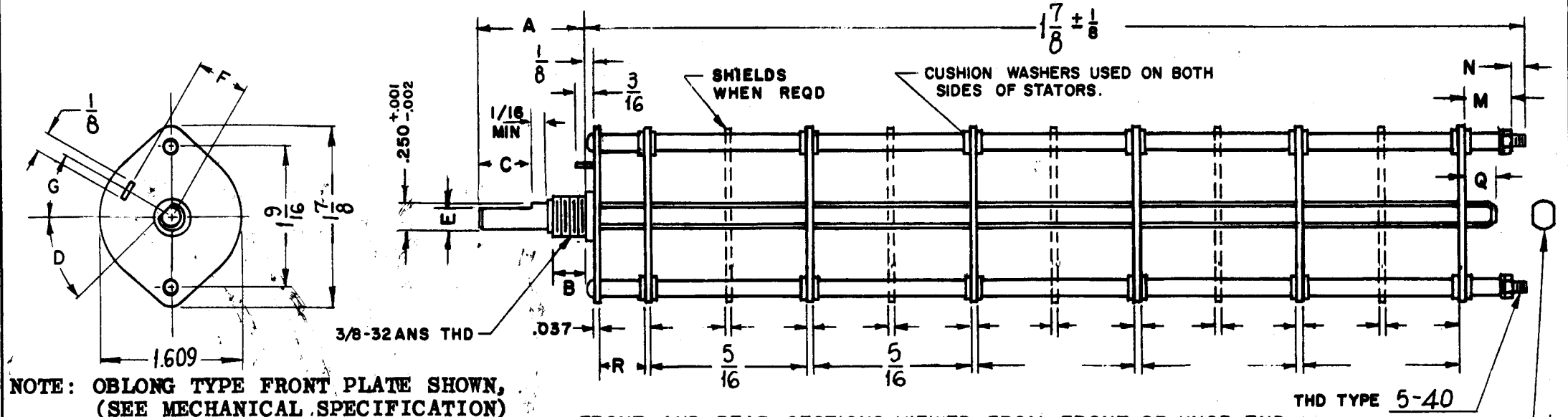
HARDWARE, TO BE SUPPLIED BY MANUFACTURER:
 1 QUAN. 3/8 -32 NUTS 1/2 ACROSS FLATS
 MATERIAL BRASS PLATING NICKEL
 1 QUAN. 3/8 INTERNAL TOOTH LOCKWASHER
 MATERIAL BRASS PLATING NICKEL

ELECTRICAL SPECIFICATIONS:
 MAXIMUM RATED VOLTAGE 1000
 MAXIMUM RATED CURRENT 200 MA

NOTE:
 FOR S401-13 ("F" TYPE) SWITCHES, THE SHAFT POSITION MUST BE SPECIFIED ON DETAIL "XX" BELOW.



NOTES



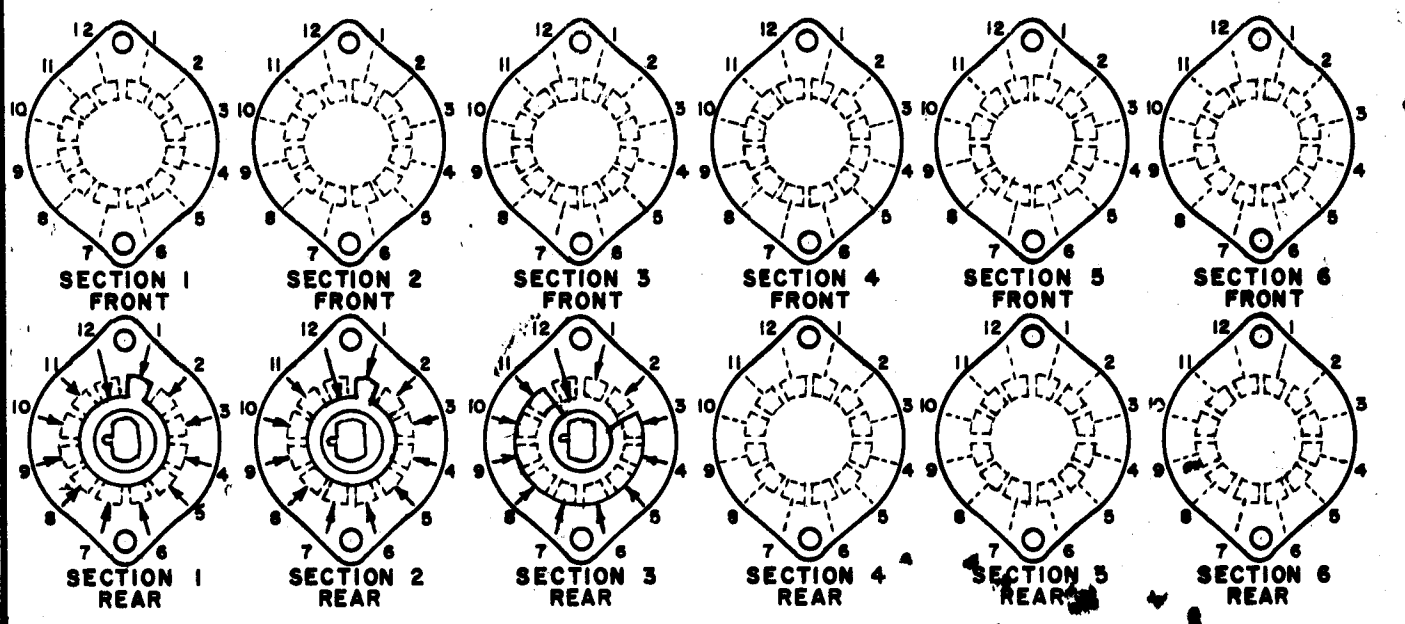
SYMBOLS USED IN MARKING, PRINT

1	RFTA-1	
Q'TY./UNIT	MODEL USED ON	ASS'Y. NO.
SCALE	CODE	
	C	

THE CONTENTS OF THIS DRAWING ARE THE EXCLUSIVE PROPERTY OF THE TECHNICAL MATERIEL CORP. ITS UNAUTHORIZED USE OR REPRODUCTION IN WHOLE OR IN PART IS STRICTLY FORBIDDEN.

REVISIONS						
SYM	DESCRIPTION	DATE	E.M.N. NO.	DRAFT	CHKD	APPD
X	EXP. RELEASE	1-27-65	X	SRG		
X	SHORTING TYPE SECT. WAS 1, NON SHORTING WERE 2	8-2-65	X2	SRG		
Ø	ORIGINAL RELEASE	5-6-66	Ø	HLA		

FRONT AND REAR SECTIONS VIEWED FROM FRONT OR KNOB END OF SWITCH IN EXTREME COUNTERCLOCKWISE POSITION. SEE NOTE (DET. "XX")



SWITCH, ROTARY - 12 POINT TYPE

MATERIAL	SEE DRAWING	THE TECHNICAL MATERIEL CORP. MAMARONECK, NEW YORK			
FINISH	SEE DRAWING	TITLE SWITCH, ROTARY			
UNLESS OTHERWISE SPECIFIED DIMENSIONS ARE IN INCHES AND INCLUDE CHEMICALLY APPLIED OR PLATED FINISHES	DRAWN SRG	DATE 1-27-65	FINAL APPROVAL	DATE 5/6/66	
	CHECKED	DATE			
	ELECT. DES. aa	DATE 5-6-66	SW367		
	MECH. DES.	DATE			
DECIMALS .X ± .08 .XX ± .01 .XXX ± .008	TOLERANCES	FRACTIONS ± 1/64 ANGLES ± 0° 30'	SHEET		REV. LTR.