

| DESG. | DIMENSION | TOL. | REMARK |
|-------|----------------|-------|-----------------------------|
| A | 4-5/16 | ±.015 | SHAFT LG. FROM MTG. SURFACE |
| B | 3/8 | ±.005 | BUSH. LG. |
| C | ROUND | ±.015 | FLAT LG. (IF REQ.) |
| D | 1/4 | ±2° | FLAT ANGLE (IF REQ.) |
| E | 1/4 | ±.002 | FLAT (IF REQUIRED) |
| F | 3/8 | ±.010 | KEY LOCATION (IF REQ.) |
| G | 180° | | KEY LOCATION (IF REQ.) |
| M | 1/4 | ±.010 | |
| N | 1/4 | ±.093 | REAR SCR. EXT. |
| Q | 1/4 | ±.031 | REAR SHAFT EXT. |
| R | 5/16 | | 1st SEC. SPACING |

TMC PART NUMBER: SW-363 STAMP ON FRONT PLATE
 FRONT PLATE SHAPE: ROUND OR OBLONG X
 MECHANICAL SPECIFICATIONS: NO STOP, ROTATION 360°
 NUMBER OF SECTIONS - 4
 NUMBER OF POSITIONS - 5
 ANGLE OF THROW - 30°

CONTACTS:
 SHORTING TYPE, SECTIONS _____
 NON SHORTING TYPE, SECTIONS 4
 SILVER PLATED BRASS, SECTIONS _____
 SILVER ALLOY, SECTIONS 4

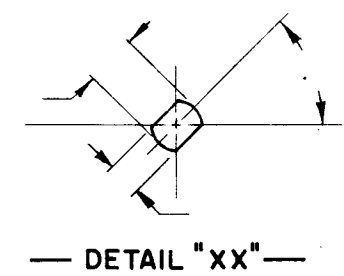
WAFERS: SILICON GLASS 4-SECTIONS
 ROTOR: KELF 4 SECTIONS
 CERAMIC, SECTIONS _____
 MYCALEX, SECTIONS _____
 IMPREGNATION (IF REQ.) _____

FINISH REQUIREMENTS:
 ARMY _____ NAVY _____ COMMERCIAL X
 SALT TEST (IF REQ.) _____

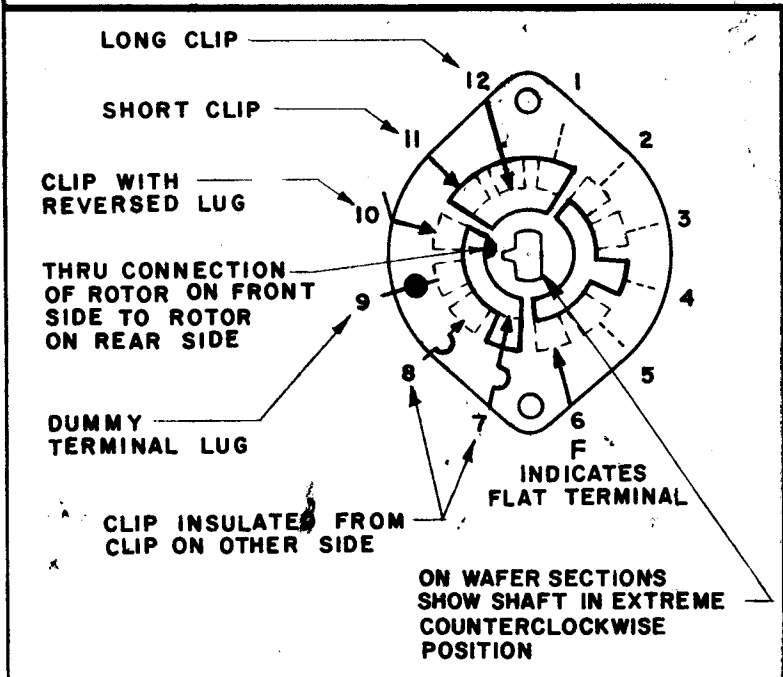
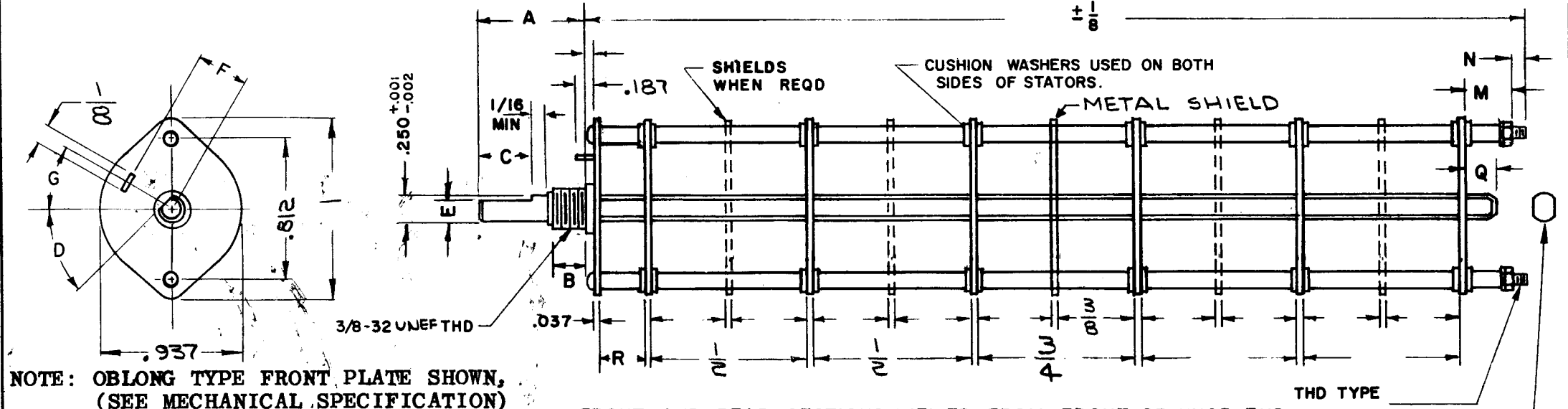
HARDWARE, TO BE SUPPLIED BY MANUFACTURER:
1 QUAN. 3/8 -32 NUTS 1/2 ACROSS FLATS
 MATERIAL STEEL PLATING CADMIUM
1 QUAN. 3/8 INTERNAL TOOTH LOCKWASHER
 MATERIAL STEEL PLATING CADMIUM

ELECTRICAL SPECIFICATIONS:
 MAXIMUM RATED VOLTAGE _____
 MAXIMUM RATED CURRENT _____

NOTE:
 CONSTRUCTION BOLTED
 FOR S401-13 ("F" TYPE) SWITCHES, THE SHAFT POSITION MUST BE SPECIFIED ON DETAIL "XX" BELOW.



NOTES



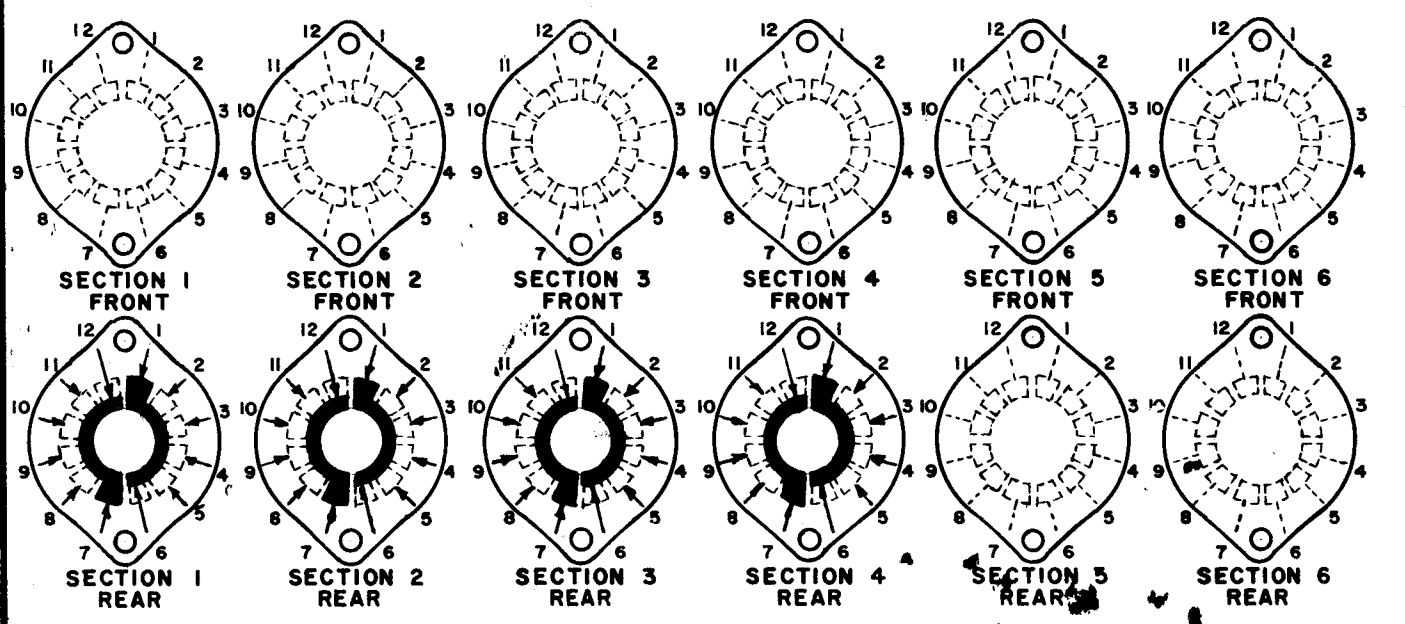
SYMBOLS USED IN MARKING PRINT

| | | | | |
|------------|--|---------------|---------|------------|
| Q'TY./UNIT | | MODEL USED ON | | ASS'Y. NO. |
| SCALE | | CODE | S401-13 | |
| | | C | | |

THE CONTENTS OF THIS DRAWING ARE THE EXCLUSIVE PROPERTY OF THE TECHNICAL MATERIEL CORP. ITS UNAUTHORIZED USE OR REPRODUCTION IN WHOLE OR IN PART IS STRICTLY FORBIDDEN.

| REVISIONS | | | | | | |
|-----------|---------------------------------|---------|------------|-------|------|------|
| SYM | DESCRIPTION | DATE | E.M.N. NO. | DRAFT | CHKD | APPD |
| X | EXPER. RELEASE | 8.20.64 | X | | | |
| Ø | ORIGINAL RELEASE FOR PRODUCTION | 8.21.64 | | | | |

FRONT AND REAR SECTIONS VIEWED FROM FRONT OR KNOB END OF SWITCH IN EXTREME COUNTERCLOCKWISE POSITION. SEE NOTE (DET. "XX")



SWITCH, ROTARY - 12 POINT TYPE - A

| | | | | | |
|---|--|---|----------------|--|-----------|
| MATERIAL | THE TECHNICAL MATERIEL CORP. GELLMAN MAMARONECK, NEW YORK | | | | |
| FINISH | TITLE SWITCH, ROTARY BAND | | | | |
| UNLESS OTHERWISE SPECIFIED DIMENSIONS ARE IN INCHES AND INCLUDE CHEMICALLY APPLIED OR PLATED FINISHES | DRAWN | DATE | FINAL APPROVAL | | DATE |
| | CHECKED | DATE | RC | | |
| DECIMALS .X ± .05 .XX ± .01 .XXX ± .005 | TOLERANCES | FRACTIONS ± 1/64 ANGLES ± 0° 30' | SW363 | | Ø |
| | | | SHEET | | REV. LTR. |