

DESG.	DIMENSION	TOL.	REMARK
A	1-3/16	±.015	SHAFT LG. FROM MTG. SURFACE
B	3/8	±.005	BUSH. LG.
C	ROUND	±.015	FLAT LG. (IF REQ.)
D	—	±2°	FLAT ANGLE (IF REQ.)
E	—	±.002	FLAT (IF REQUIRED)
F	3/8	±.010	KEY LOCATION (IF REQ.)
G	180°		KEY LOCATION (IF REQ.)
M	1/4	±.010	
N	1/4	±.093	REAR SCR. EXT.
Q	1/4	±.031	REAR SHAFT EXT.
R	5/16		1st SEC. SPACING

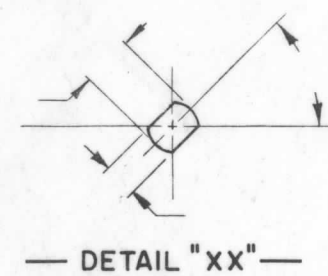
TMC PART NUMBER: SW-362 STAMP ON FRONT PLATE
 FRONT PLATE SHAPE: ROUND OR OBLONG X
 MECHANICAL SPECIFICATIONS: NO STOP, ROTATION 360°
 NUMBER OF SECTIONS - 1
 NUMBER OF POSITIONS - 3
 ANGLE OF THROW - 30°

CONTACTS:
 SHORTING TYPE, SECTIONS _____
 NON SHORTING TYPE, SECTIONS 1
 SILVER PLATED BRASS, SECTIONS _____
 SILVER ALLOY, SECTIONS 1
 WAFERS: SILICON GLASS, 1 SECTION
 ROTOR: KELF, 1 SECTION
 CERAMIC, SECTIONS _____
 MYCALEX, SECTIONS _____
 IMPREGNATION (IF REQ.) _____

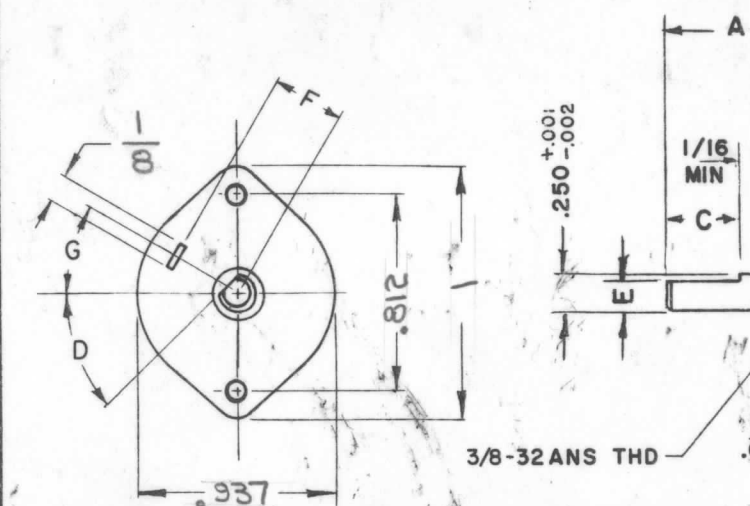
FINISH REQUIREMENTS:
 ARMY _____ NAVY _____ COMMERCIAL X
 SALT TEST (IF REQ.) _____
 HARDWARE, TO BE SUPPLIED BY MANUFACTURER:
 1 QUAN. 3/8 -32 NUTS 1/2 ACROSS FLATS
 MATERIAL STEEL PLATING CADMIUM
 1 QUAN. 3/8 INTERNAL TOOTH LOCKWASHER
 MATERIAL STEEL PLATING CADMIUM

ELECTRICAL SPECIFICATIONS:
 MAXIMUM RATED VOLTAGE _____
 MAXIMUM RATED CURRENT _____
 CONSTRUCTION BOLTED

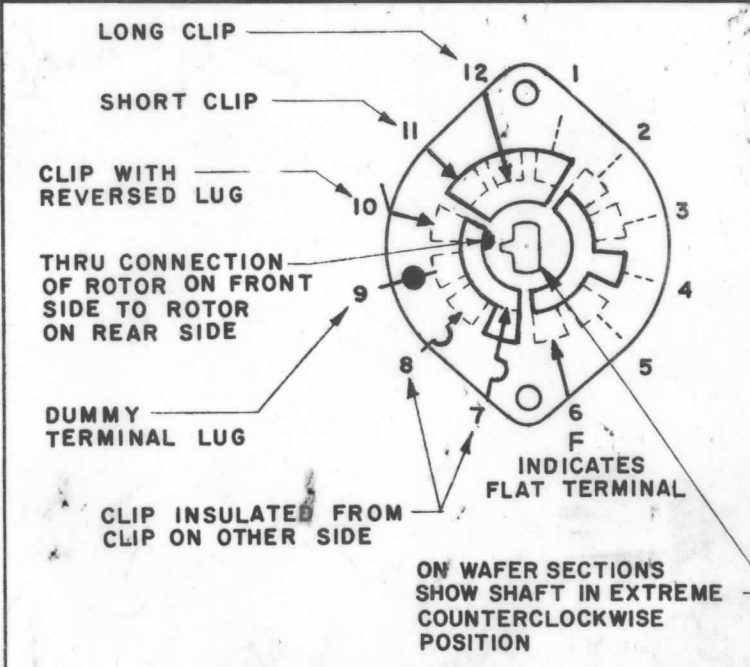
NOTE:
 FOR S401-13 ("F" TYPE) SWITCHES, THE SHAFT POSITION MUST BE SPECIFIED ON DETAIL "XX" BELOW.



NOTES



NOTE: OBLONG TYPE FRONT PLATE SHOWN, (SEE MECHANICAL SPECIFICATION)

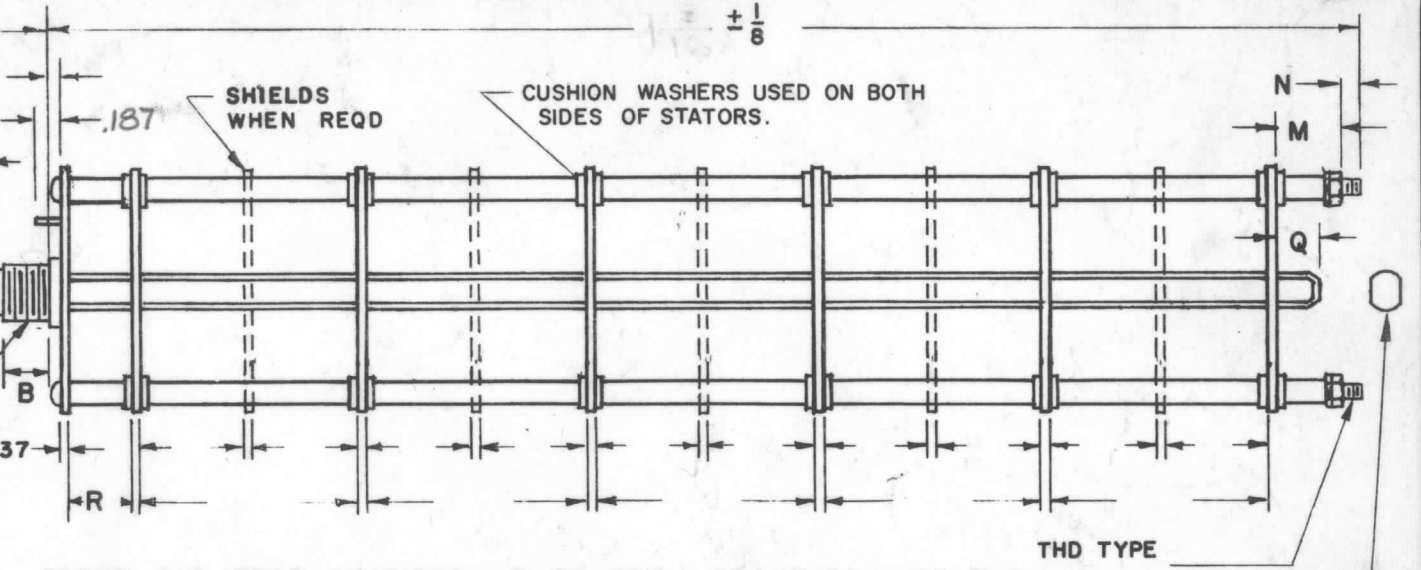


SYMBOLS USED IN MARKING PRINT

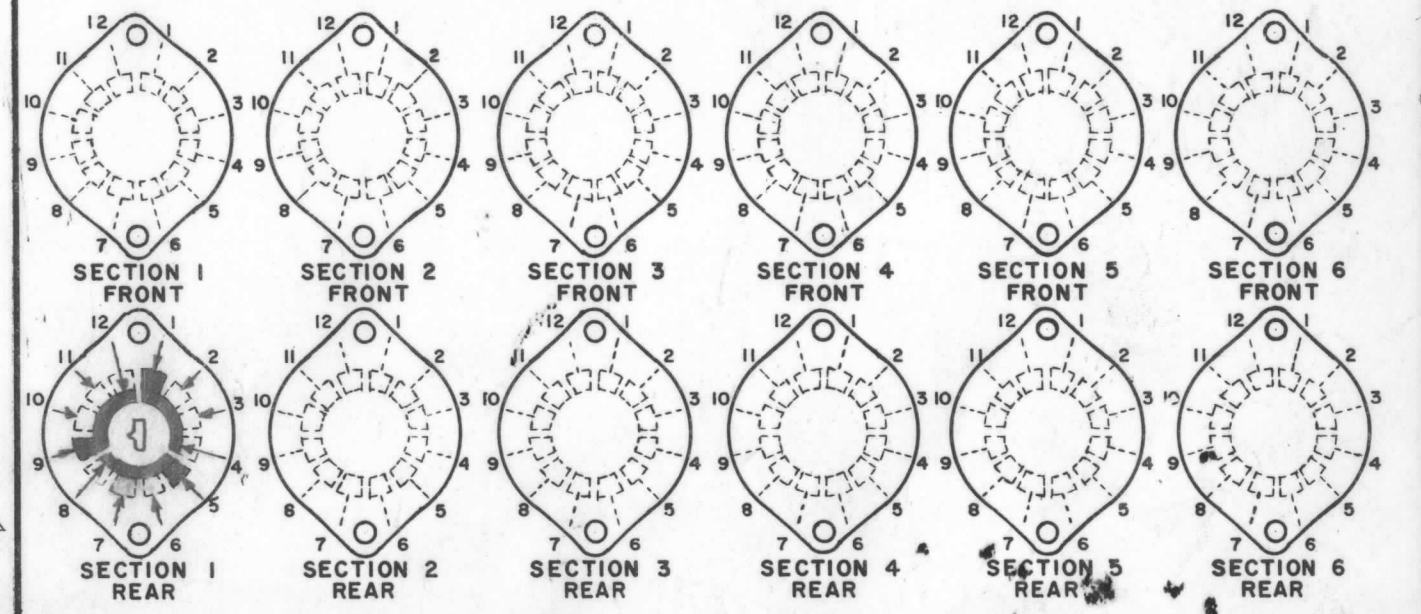
QTY./UNIT	MODEL USED ON	ASS'Y. NO.
SCALE	CODE	
	C	S401-13

THE CONTENTS OF THIS DRAWING ARE THE EXCLUSIVE PROPERTY OF THE TECHNICAL MATERIEL CORP. ITS UNAUTHORIZED USE OR REPRODUCTION IN WHOLE OR IN PART IS STRICTLY FORBIDDEN.

REVISIONS						
SYM	DESCRIPTION	DATE	E.M.N. NO.	DRAFT	CHKD	APPD
X	EXPER. RELEASE	8-20-64	X			
Ø	ORIGINAL RELEASE FOR PRODUCTION	8-21-64				
A	SECTION 1 REAR: WIPER LENGTHS INCREASED ON PINS 4 & 8; 1 LUG ADDED NEAR PIN 9.	1-11-65	13265			



FRONT AND REAR SECTIONS VIEWED FROM FRONT OR KNOB END OF SWITCH IN EXTREME COUNTERCLOCKWISE POSITION. SEE NOTE (DET. "XX")



SWITCH, ROTARY - 12 POINT TYPE - A

MATERIAL	THE TECHNICAL MATERIEL CORP. GELMAN MAMARONECK, NEW YORK			
FINISH	TITLE SWITCH, ROTARY MODE			
UNLESS OTHERWISE SPECIFIED DIMENSIONS ARE IN INCHES AND INCLUDE CHEMICALLY APPLIED OR PLATED FINISHES	DRAWN	DATE	FINAL APPROVAL	DATE
		8-20-64		
DECIMALS .X ± .05 .XX ± .01 .XXX ± .005	CHECKED	DATE		
TOLERANCES		8-20-64		
FRACTIONS ± 1/64 ANGLES ± 0° 30'	ELECT. DES.	DATE		
	MECH. DES.	DATE		
		8-20-64		
			SW 362	A
			SHEET	REV. LTR.

DESG.	DIMENSION	TOL.	REMARK
A	1-3/16	±.015	SHAFT LG. FROM MTG. SURFACE
B	3/8	±.005	BUSH. LG.
C	ROUND	±.015	FLAT LG. (IF REQ.)
D	—	±2°	FLAT ANGLE (IF REQ.)
E	—	±.002	FLAT (IF REQUIRED)
F	3/8	±.010	KEY LOCATION (IF REQ.)
G	180°		KEY LOCATION (IF REQ.)
M	1/4	±.010	
N	1/4	±.093	REAR SCR. EXT.
Q	1/4	±.031	REAR SHAFT EXT.
R	5/16		1st SEC. SPACING

TMC PART NUMBER: SW-362 STAMP ON FRONT PLATE
 FRONT PLATE SHAPE: ROUND OR OBLONG X
 MECHANICAL SPECIFICATIONS: NO STOP, ROTATION 360°
 NUMBER OF SECTIONS- 1
 NUMBER OF POSITIONS- 3
 ANGLE OF THROW- 30°

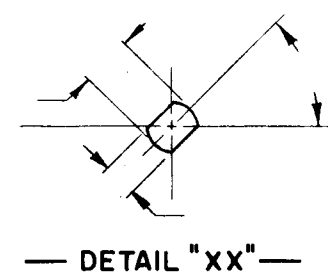
CONTACTS:
 SHORTING TYPE, SECTIONS _____
 NON SHORTING TYPE, SECTIONS 1
 SILVER PLATED BRASS, SECTIONS _____
 SILVER ALLOY, SECTIONS 1
 WAFERS: SILICON GLASS, 1 SECTION
 ROTOR: KELF, 1 SECTION
 CERAMIC, SECTIONS _____
 MYCALEX, SECTIONS _____
 IMPREGNATION (IF REQ.) _____

FINISH REQUIREMENTS:
 ARMY _____ NAVY _____ COMMERCIAL X
 SALT TEST (IF REQ.) _____

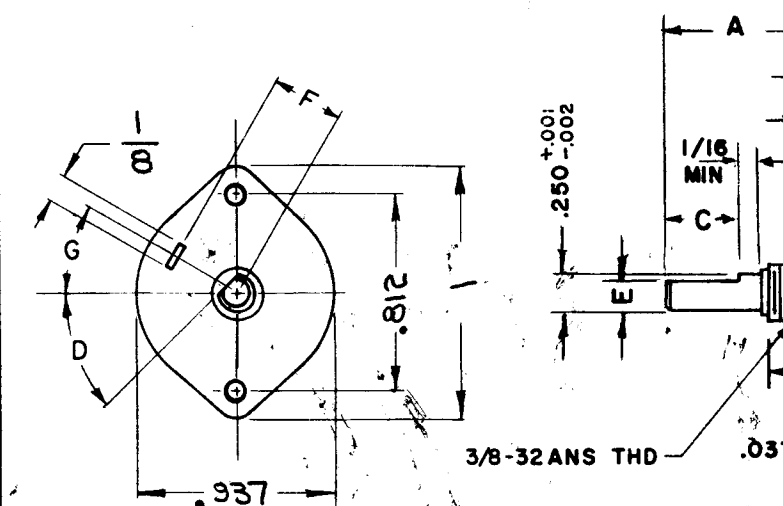
HARDWARE, TO BE SUPPLIED BY MANUFACTURER:
 1 QUAN. 3/8 -32 NUTS 1/2 ACROSS FLATS
 MATERIAL STEEL PLATING CADMIUM
 1 QUAN. 3/8 INTERNAL TOOTH LOCKWASHER
 MATERIAL STEEL PLATING CADMIUM

ELECTRICAL SPECIFICATIONS:
 MAXIMUM RATED VOLTAGE _____
 MAXIMUM RATED CURRENT _____
 CONSTRUCTION BOLTED

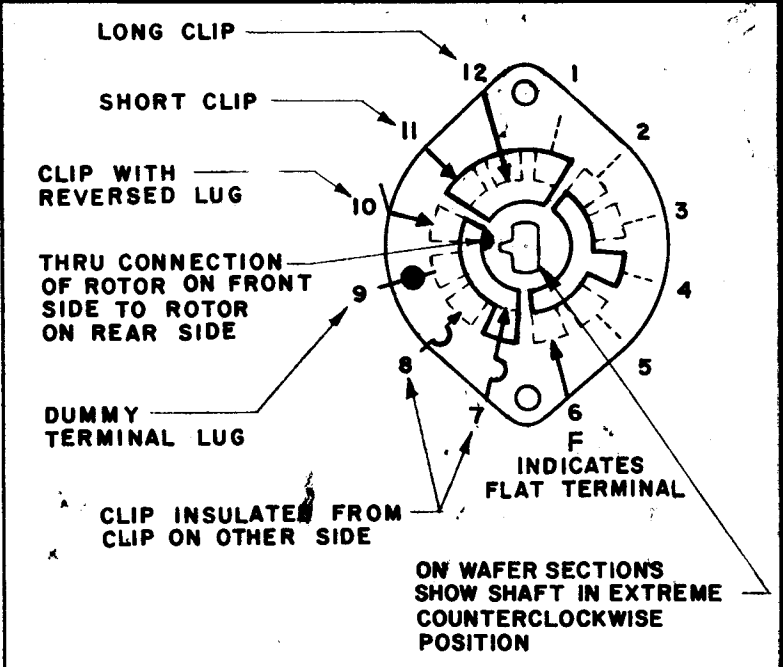
NOTE:
 FOR S401-13 ("F" TYPE) SWITCHES, THE SHAFT POSITION MUST BE SPECIFIED ON DETAIL "XX" BELOW.



NOTES



NOTE: OBLONG TYPE FRONT PLATE SHOWN, (SEE MECHANICAL SPECIFICATION)

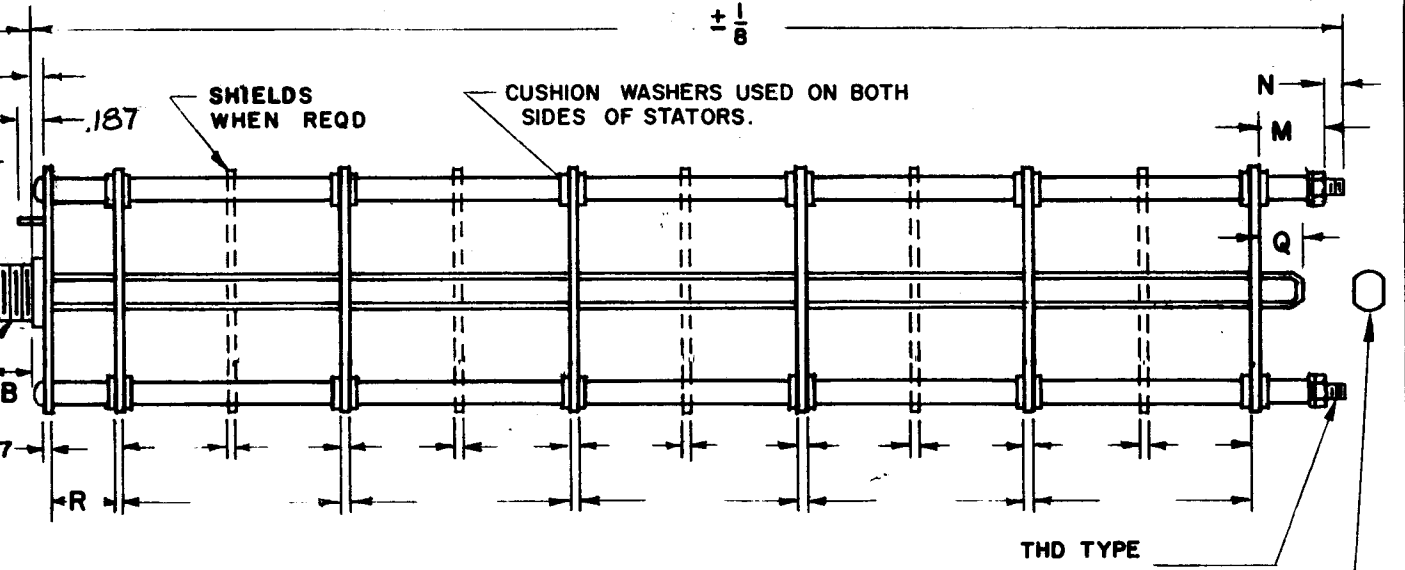


SYMBOLS USED IN MARKING PRINT

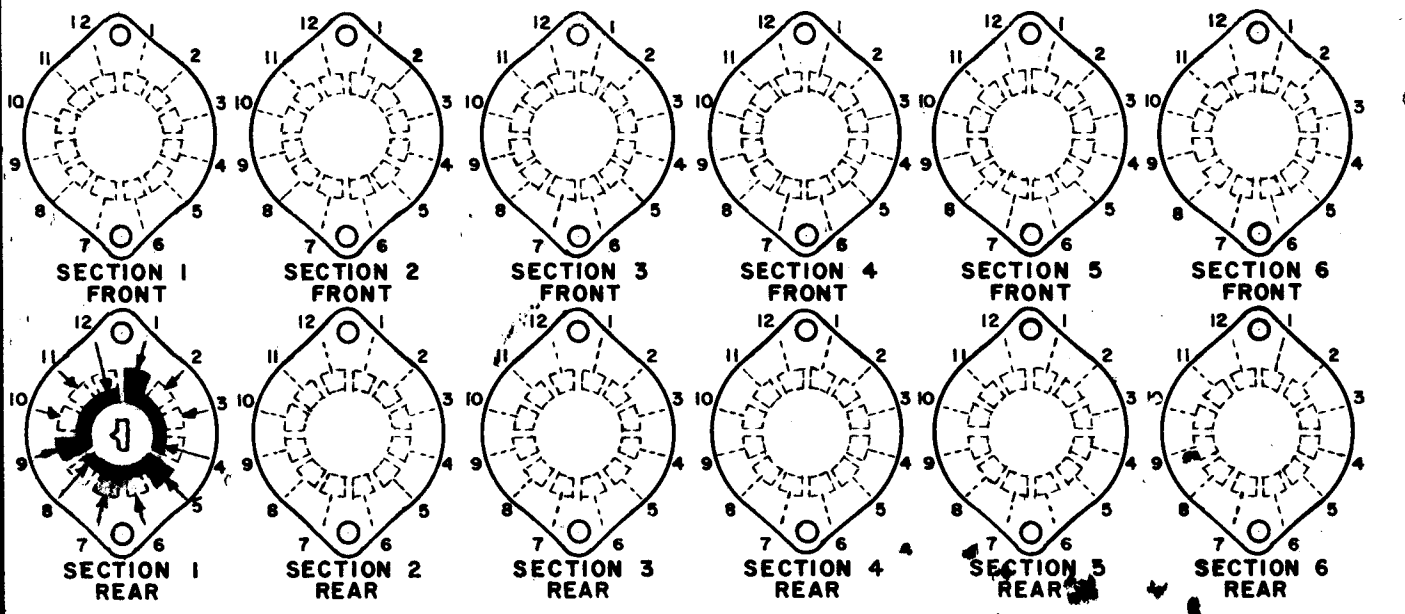
QTY./UNIT	MODEL USED ON	ASS'Y. NO.
SCALE	CODE	
	C	S401-13

THE CONTENTS OF THIS DRAWING ARE THE EXCLUSIVE PROPERTY OF THE TECHNICAL MATERIEL CORP. ITS UNAUTHORIZED USE OR REPRODUCTION IN WHOLE OR IN PART IS STRICTLY FORBIDDEN.

REVISIONS					
SYM	DESCRIPTION	DATE	E.M.N. NO.	DRAFT	CHKD
X	EXPER. RELEASE	8.20.64	X		
Ø	ORIGINAL RELEASE FOR PRODUCTION	8.21.64			
A	SECTION 1 REAR: WIPER LENGTHS INCREASED ON PINS 4 & 8; 1 LUG ADDED NEAR PIN 9.	1.11.65	13265	9.2.	



FRONT AND REAR SECTIONS VIEWED FROM FRONT OR KNOB END OF SWITCH IN EXTREME COUNTERCLOCKWISE POSITION. SEE NOTE (DET. "XX")



SWITCH, ROTARY - 12 POINT TYPE - A

MATERIAL	THE TECHNICAL MATERIEL CORP. GELLMAN MAMARONECK, NEW YORK			
FINISH	TITLE SWITCH, ROTARY MODE			
UNLESS OTHERWISE SPECIFIED DIMENSIONS ARE IN INCHES AND INCLUDE CHEMICALLY APPLIED OR PLATED FINISHES	DRAWN	DATE	FINAL APPROVAL	
	CHECKED	DATE	DATE	
DECIMALS	ANGLES	DATE	DATE	
.X ± .05	± 1/64	8-20-64	8-20-64	
.XX ± .01	ANGLES	DATE	DATE	
.XXX ± .005	± 0° 30'	8-20-64	8-20-64	
ELECT. DES.			SW 362	
MECH. DES.			A	
SHEET			REV. LTR.	