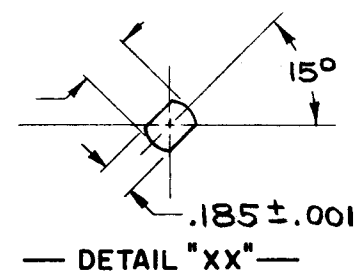


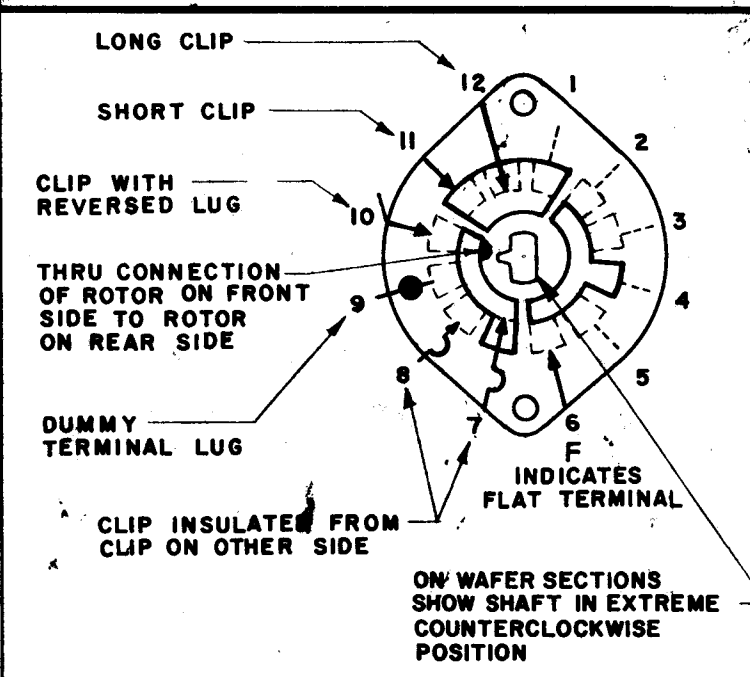
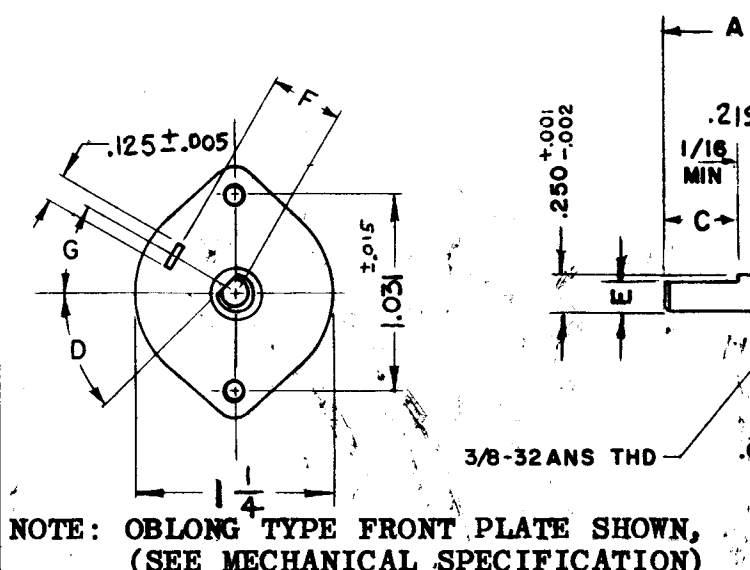
DESG.	DIMENSION	TOL.	REMARK
A	.812	±.015	SHAFT LG. FROM MTG. SURFACE
B	.375	±.005	BUSH. LG.
C	—	±.015	FLAT LG. (IF REQ.)
D	—	±2°	FLAT ANGLE (IF REQ.)
E	—	±.002	FLAT (IF REQUIRED)
F	.531	±.010	KEY LOCATION (IF REQ.)
G	180°		KEY LOCATION (IF REQ.)
M	.155	±.010	
N	.156	±.093	REAR SCR. EXT.
Q	.125	±.031	REAR SHAFT EXT.
R	.500		1st SEC. SPACING

TMC PART NUMBER: SW-343 STAMP ON FRONT PLATE
FRONT PLATE SHAPE: ROUND ✓ OR OBLONG
MECHANICAL SPECIFICATIONS:
NUMBER OF SECTIONS- 2
NUMBER OF POSITIONS- 3
ANGLE OF THROW- 30°
CONTACTS:
SHORTING TYPE, SECTIONS —
NON SHORTING TYPE, SECTIONS 2
SILVER PLATED BRASS, SECTIONS 2
SILVER ALLOY, SECTIONS —
WAFERS:
BAKELITE, SECTIONS 2
CERAMIC, SECTIONS —
MYCALEX, SECTIONS —
IMPREGNATION (IF REQ.) —
FINISH REQUIREMENTS:
ARMY NAVY ✓ COMMERCIAL
SALT TEST (IF REQ.) 200hr.
HARDWARE, TO BE SUPPLIED BY MANUFACTURER:
1 QUAN. 3/8 -32 NUTS 3/8 ACROSS FLATS
MATERIAL ST. STEEL PLATING
1 QUAN. 3/8 INTERNAL TOOTH LOCKWASHER
MATERIAL ST. STEEL PLATING
ELECTRICAL SPECIFICATIONS:
MAXIMUM RATED VOLTAGE
MAXIMUM RATED CURRENT

NOTE:
FOR S401-13 ("F" TYPE) SWITCHES, THE SHAFT POSITION MUST BE SPECIFIED ON DETAIL "XX" BELOW.



NOTES

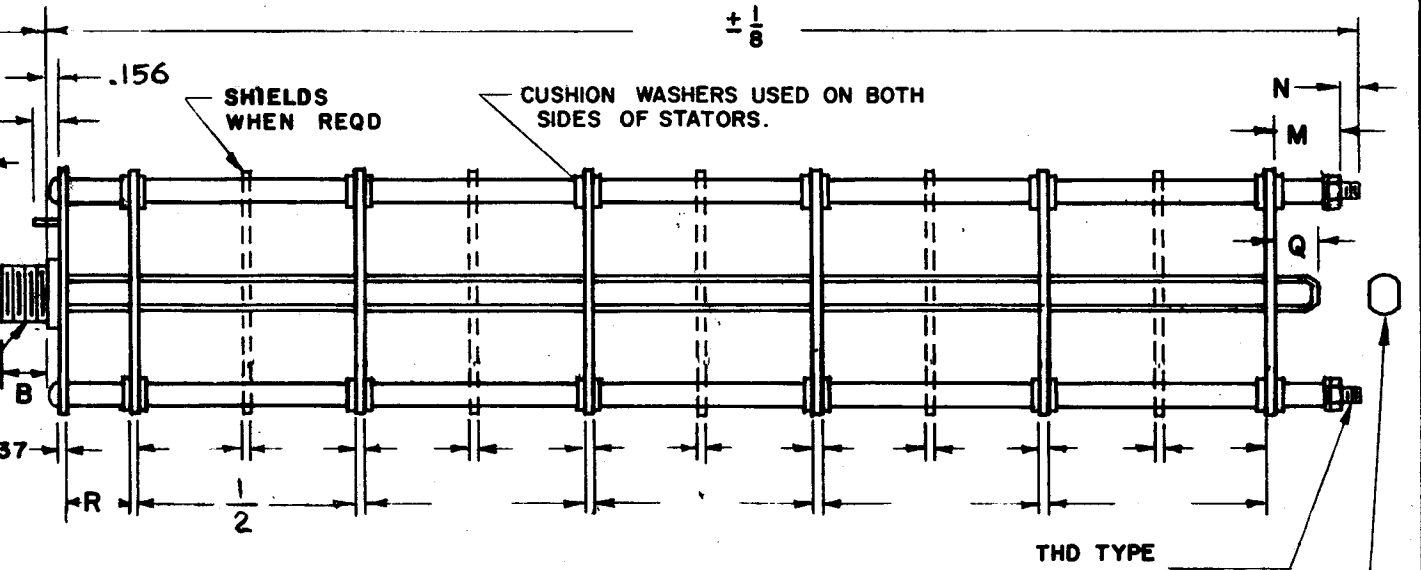


SYMBOLS USED IN MARKING PRINT

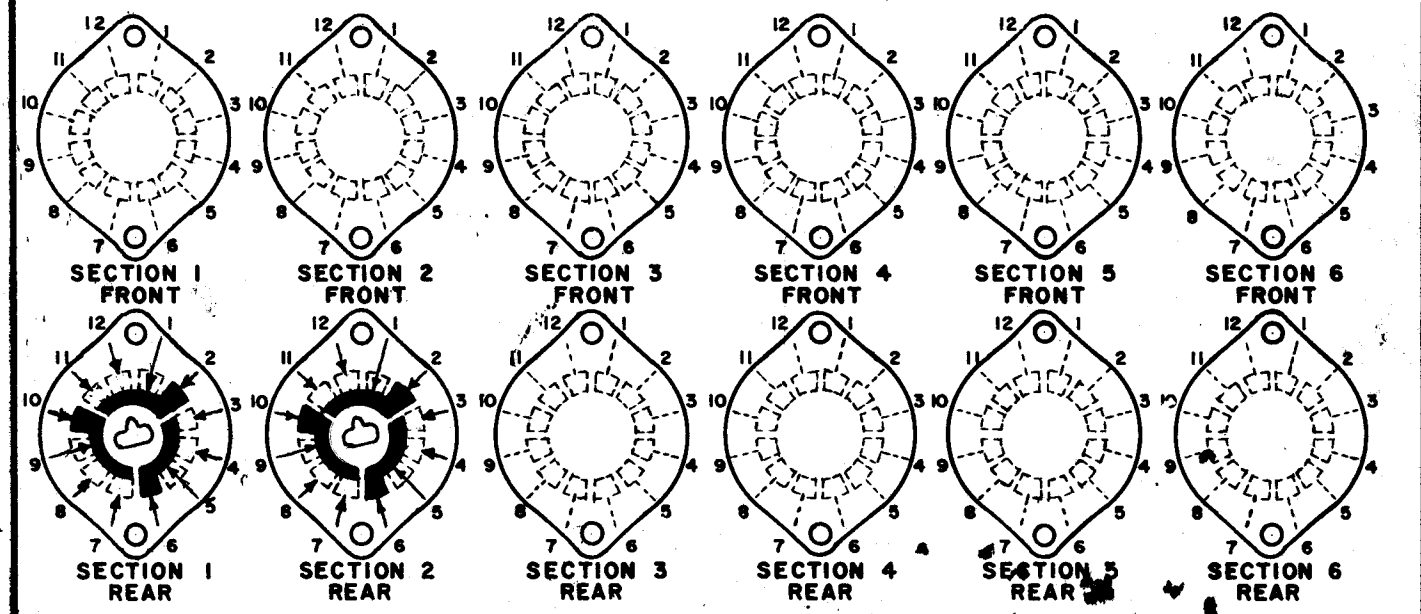
1	MCG-1	
QTY./UNIT	MODEL USED ON	ASSY. NO.
SCALE —	CODE C	S401-13

THE CONTENTS OF THIS DRAWING ARE THE EXCLUSIVE PROPERTY OF THE TECHNICAL MATERIEL CORP. ITS UNAUTHORIZED USE OR REPRODUCTION IN WHOLE OR IN PART IS STRICTLY FORBIDDEN.

REVISIONS						
SYM	DESCRIPTION	DATE	E.M.N. NO.	DRAFT	CHKD	APPD
0	ORIGINAL RELEASE FOR PRODUCTION	4-13-64	0	A.M.	@	
A	SPECS. & DIMS UPDATED	10.14.64	12649	WJB	@	yc



FRONT AND REAR SECTIONS VIEWED FROM FRONT OR KNOB END OF SWITCH IN EXTREME COUNTERCLOCKWISE POSITION. SEE NOTE (DET. "XX")



SWITCH, ROTARY - 12 POINT TYPE

MATERIAL	THE TECHNICAL MATERIEL CORP. AALTONEN MAMARONECK, NEW YORK			
FINISH	TITLE SWITCH, ROTARY			
UNLESS OTHERWISE SPECIFIED DIMENSIONS ARE IN INCHES AND INCLUDE CHEMICALLY APPLIED OR PLATED FINISHES	DRAWN WJB	DATE 2-25-64	FINAL APPROVAL	DATE 4/20/64
DECIMALS .X ± .05 .XX ± .01 .XXX ± .005	CHECKED @	DATE 4-2-64	SW-343	A
FRACTIONS ± 1/64 ANGLES ± 0° 30'	ELECT. DES. ASG	DATE 4/2/64		
TOLERANCES	MECH. DES. RGP	DATE 4/20/64		