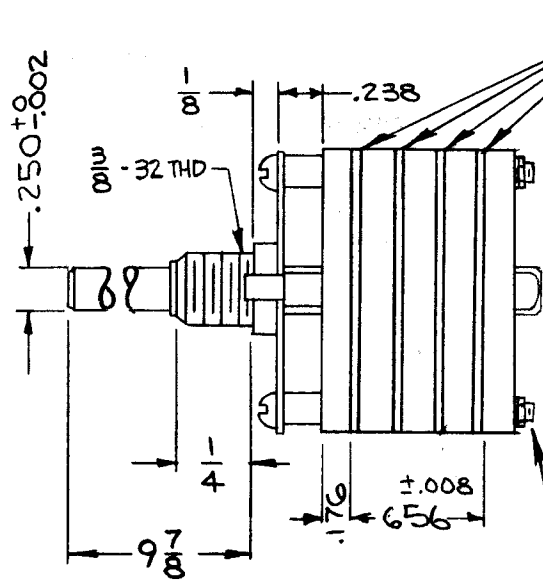
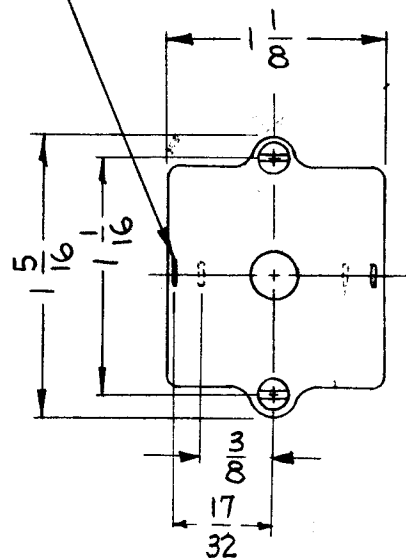


STANDARD POSITION,  
ALL OTHERS OPTIONAL.  
SHOW POSITION  
DESIRED IN SOLID BLACK.

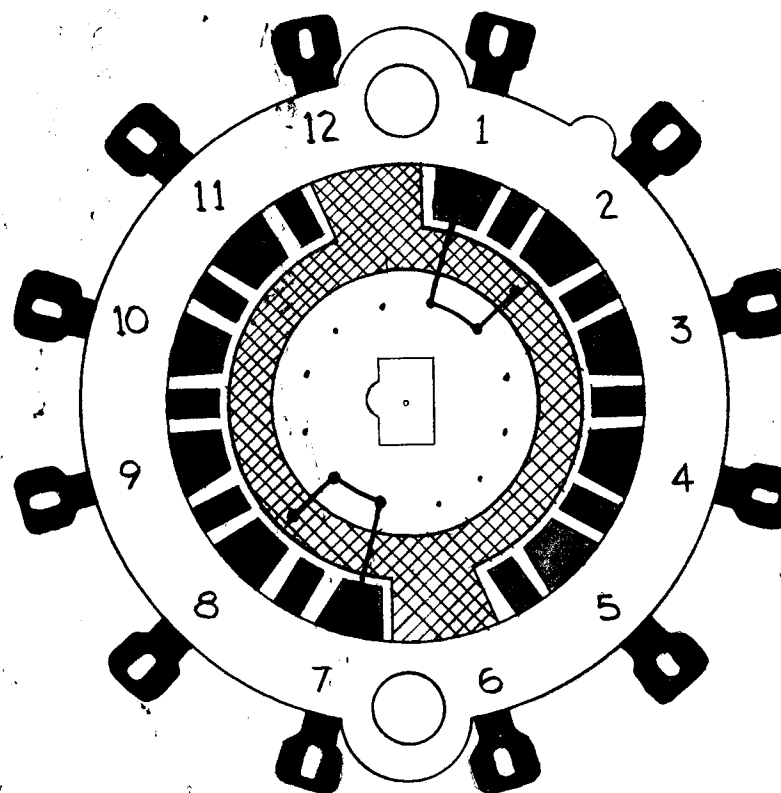


SHIELDS BETWEEN  
WAFERS

4-40 MACHINE SCREW  
WITH #4 INTERNAL  
TOOTH LOCKWASHER.

#4-40 NUT  
& L' WASHER

SW-338



NOTE:  
1. SECTIONS 2, 3, 4 & 5 ARE  
THE SAME AS SECT. 1

SECTION 1

TMC PART NO: SW-338 (STAMP ON FRONT PLATE)  
TOTAL NO. OF POSITIONS: 5  
TOTAL NO. OF SECTIONS: 5  
ANGLE OF THROW: 30°  
CONTACTS & ROTORS: SHORTING \_\_\_\_\_, NON SHORTING   
MATERIAL & FINISHES

METAL PARTS: STEEL, CADMIUM PLATE & IRIDITE  
SHAFT: STEEL, CADMIUM PLATE & IRIDITE  
BUSHING: STEEL, CADMIUM PLATE & IRIDITE  
STATOR CONTACTS & TERMINALS: BRASS, DENSELY SILVER PLATED  
ROTOR CONTACTS: SILVER-BRASS LAMINATED OVER-LAY; SILVER PLATED  
ROTOR INSULATION MATERIAL: NYLON

STATOR INSULATION MATERIAL: GLASS REINFORCED ALKYD, GRAY.

FINISH REQUIREMENTS:

COMMERCIAL: \_\_\_\_\_ MILITARY: \_\_\_\_\_

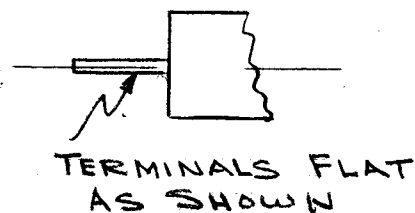
SALT SPRAY: 50 HR.  20 HR. \_\_\_\_\_

HARDWARE SUPPLIED:

NUTS 3/8-32, 1/2 ACROSS FLATS, 3/32 THICK, BRASS, NICKEL PLATED

3/8 INT. LOCKWASHER 11/16 OD X 1/32 THICK, BRONZE, NICKEL PLATED

SPECIAL INSTRUCTIONS: STOPS



1	TTR-10	A-2773
Q'TY./UNIT	MODEL USED ON	ASS'Y. NO.
SCALE NONE	CODE C	S401-175

THE CONTENTS OF THIS DRAWING ARE THE EXCLUSIVE PROPERTY OF THE TECHNICAL MATERIEL CORP. ITS UNAUTHORIZED USE OR REPRODUCTION IN WHOLE OR IN PART IS STRICTLY FORBIDDEN.

REQ'D.	ITEM	PART NUMBER	DESCRIPTION	SYMBOL
KOHN LIST OF MATERIEL E 3037-41				
MATERIAL			THE TECHNICAL MATERIEL CORP. MAMARONECK, NEW YORK	
FINISH			TITLE SWITCH, ROTARY	
UNLESS OTHERWISE SPECIFIED DIMENSIONS ARE IN INCHES AND INCLUDE CHEMICALLY APPLIED OR PLATED FINISHES			DRAWN <i>R. Kohn</i> DATE 9-11-63 CHECKED <i>De</i> DATE 9-16-63 ELECT. DES. RON KOHN DATE 9-18-63 MECH. DES. RON KOHN DATE 9-18-63	FINAL APPROVAL <i>BP</i> DATE SW-338 SHEET REV. LTR.
DECIMALS	TOLERANCES		FRACTIONS	
.X ± .05			± 1/64	
.XX ± .01			ANGLES	
.XXX ± .005			± 0° 30'	

NOTES