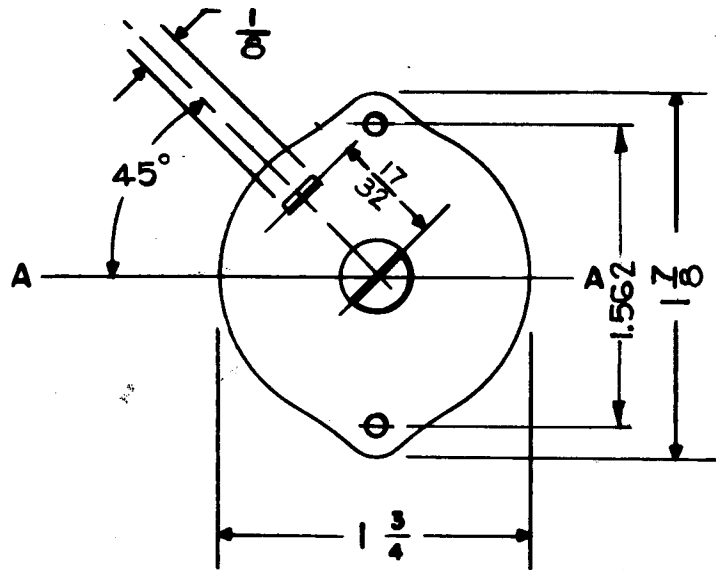
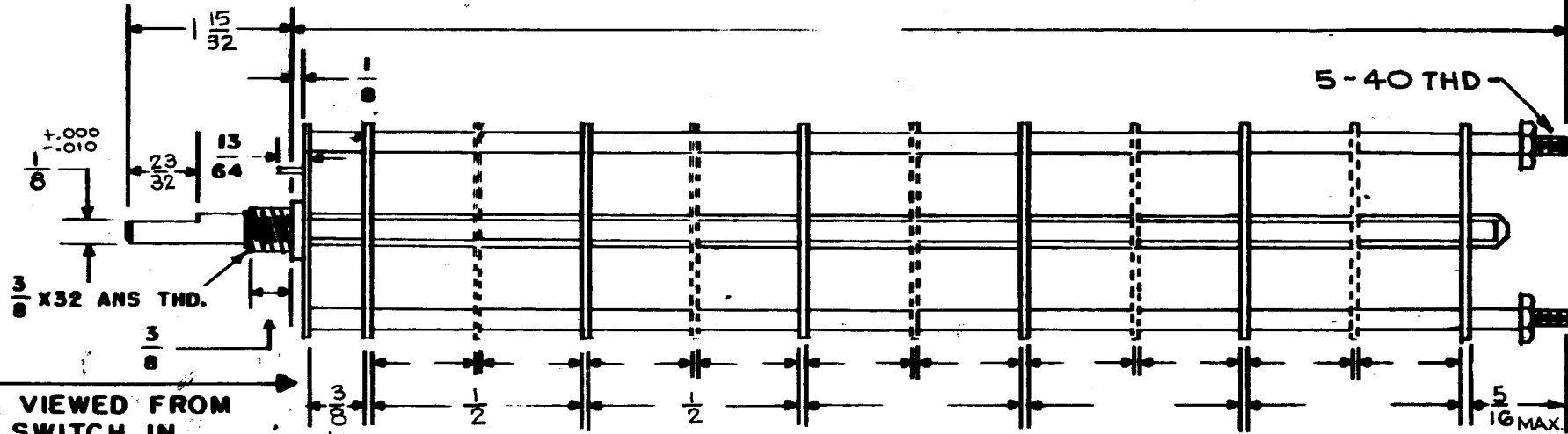


SW-334 A



FRONT & REAR SECTIONS VIEWED FROM FRONT OR KNOB END OF SWITCH IN EXTREME COUNTER CLOCKWISE POSITION



DRAW IN FLAT ON ABOVE SHAFT IN EXTREME COUNTER CLOCKWISE POSITION AND SHOW ANGLE IN REFERENCE TO LINE A-A

NUMBER OF SECTIONS 3
 NUMBER OF POSITIONS 4
 ANGLE OF THROW 30° (30° OR 60°)

PART NUMBER SW-334
 STAMP ON FRONT PLATE YES NO

CONTACTS & ROTORS: (IF NOT SPECIFIED, SHORTING TYPE WILL BE SUPPLIED)
 SHORTING NON SHORTING

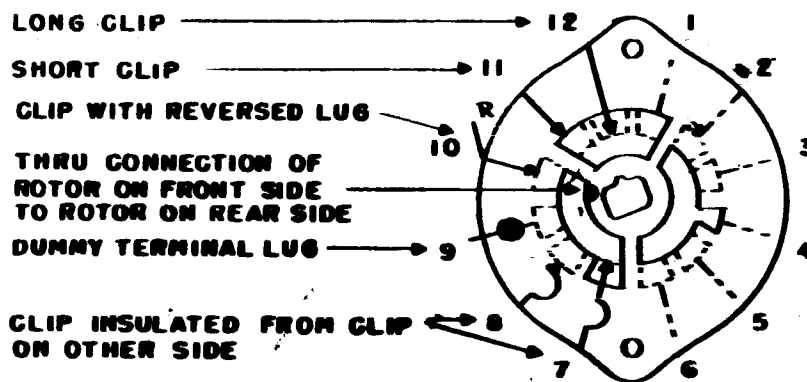
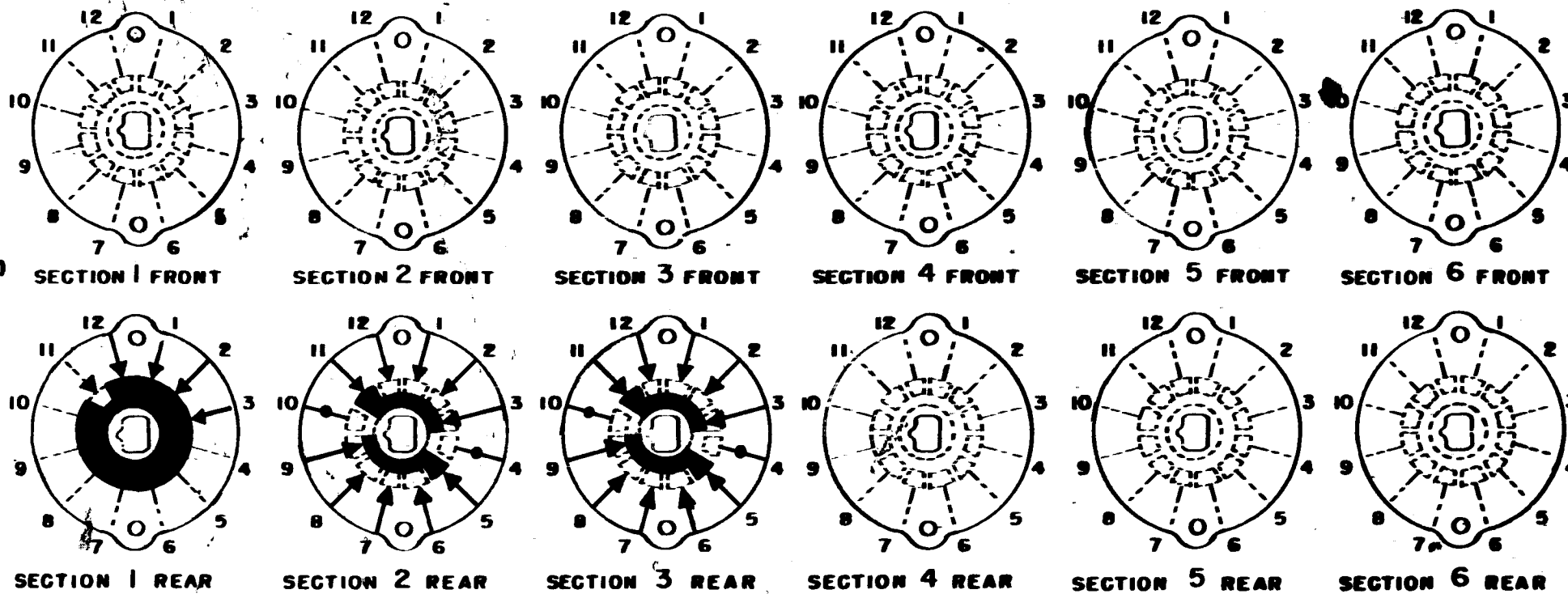
MATERIAL: (IF NOT SPECIFIED, SILVER PLATED BRASS WILL BE SUPPLIED)
 SILVER PLATED BRASS SILVER ALLOY

INSULATION: BAKELITE CERAMIC
 SPECIFY IMPREGNATION IF REQUIRED _____

FINISH REQUIREMENTS: COMMERCIAL ARMY NAVY
 SALT TEST (IF ANY GIVE DETAILS) _____

HARDWARE: SUPPLY
2 3/8-32 NUTS 1/2 ACROS FLATS MAT. BRASS PLATING NICKEL
3/8 INT TOOTH LOCKWASHERS MAT. _____ PLATING _____

SPECIAL INSTRUCTIONS: NO STOPS, FULL ROTATION THRU 360°



TYPE - H **(HC)** DH DHC QH
 QDH QHC QDHC
 (CIRCLE DESIRED TYPE)

SYMBOLS USED IN MARKING PRINT →

A	ON SPECIAL INSTRUCT: FULL ROTATION...ADD	12-15-64	13125	9R	(Signature)	(Signature)
SYM	DESCRIPTION	DATE	CH. NO.	DRAFTS	CHECKER	ENG. APP.
UNLESS OTHERWISE SPECIFIED:		SCALE: SA01-13		A		
DIMENSIONS ARE IN INCHES		MAXIMUM ALLOWABLE TOLERANCES HAVE BEEN DETERMINED AND ANY DEVIATIONS WILL BE CAUSE FOR REJECTION. REMOVE ALL BURRS AND SHARP EDGES				
TOLERANCES ON FRACTIONS ± 1/64 DECIMALS ± .005 ANGLES ± 1/2°		1 TTR-10				
		MODEL		SECTION		ASS'Y. NO. AX-418
		REQ. PER UNIT		DATE		

REQ. ITEM	PART NO.	R.KOHN	DESCRIPTION	E 3037-28	SYMBOL
STOCK SIZE		THE TECHNICAL MATERIEL CORP., MAMARONECK, NEW YORK			
MATERIAL		SWITCH, ROTARY			
TYPE & TEMPER		HEAT TREAT. SPEC.	DRAWN	CHECKER	FINAL APPROVAL
FINISH & SPEC. NO.		ELEC. DES. APP.	MECH. DES. APP.	SW-334 A	