

THE CONTENTS OF THIS DRAWING ARE THE EXCLUSIVE PROPERTY OF THE TECHNICAL MATERIEL CORP. ITS UNAUTHORIZED USE OR REPRODUCTION IN WHOLE OR IN PART IS STRICTLY FORBIDDEN.

REQ. PER UNIT

MODEL

USED ON

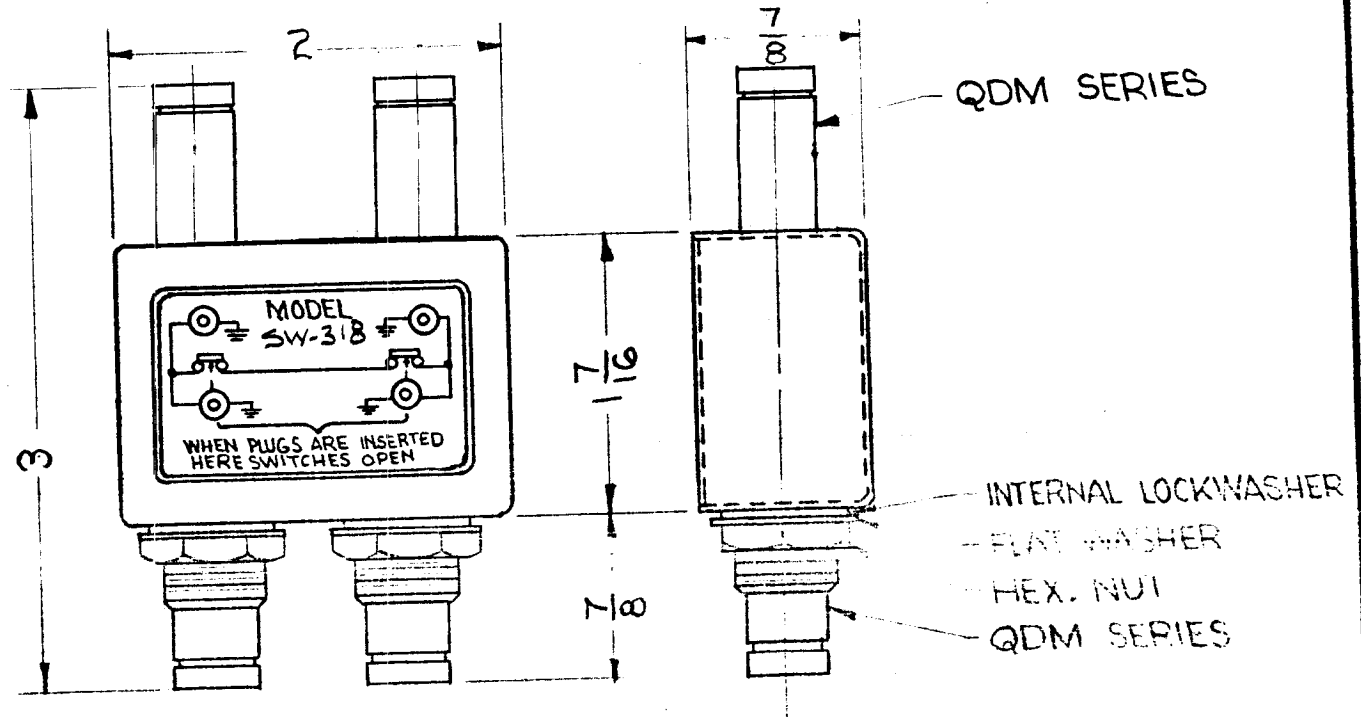
ASS'Y. NO.

DATE

SW-318

6-6-62

SW-318 | A



NOTES:
CASE - MATERIAL-BRASS
FINISH-SI15 TMC SMOOTH
GREY ENAMEL
CONNECTORS - FINISH
BODIES-RHODIUM FLASH
CONTACTS-GOLD FLASH

NOTE: ASSIGNED PATENT NO. 2,767,267

REQ.	ITEM	PART NO.	DESCRIPTION	SYMBOL
			THE TECHNICAL MATERIEL CORP. MAMARONECK, NEW YORK	
			STOCK SIZE	
			SEE NOTES	
			MATERIAL	
			TYPE & TEMPER	
			HEAT TREAT. SPEC.	
			DRAWN	
			CHECKED	
			FINAL APPROVAL	
			SW 318	A

A PATENT NOTE ADDED 9/30/65 14846 *[Signature]*

BYM DESCRIPTION DATE CH. NO. DRAFTS CHECKER ENG. APP.

UNLESS OTHERWISE SPECIFIED:
DIMENSIONS ARE IN INCHES
TOLERANCES ON

2A-2520

MAXIMUM ALLOWABLE TOLERANCES HAVE BEEN DETERMINED AND ANY DEVIATIONS WILL BE CAUSE FOR REJECTION.

ANGLES ± 1/2°