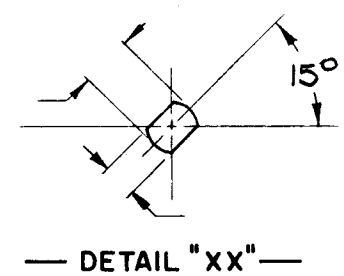


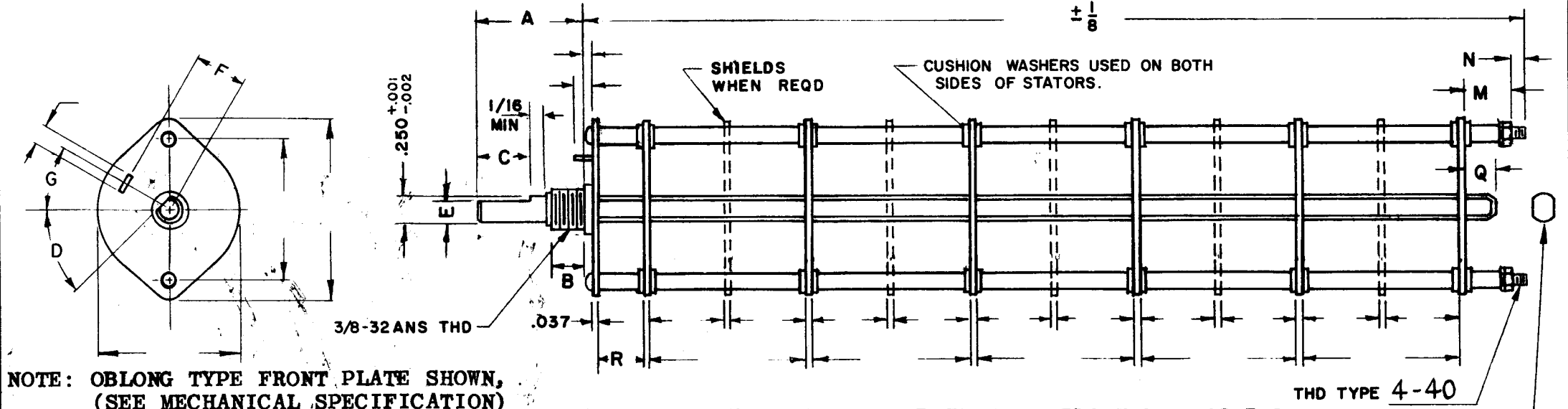
DESG.	DIMENSION	TOL.	REMARK
A	2 1/4"	±.015	SHAFT LG. FROM MTG. SURFACE
B	3/8"	±.005	BUSH. LG.
C	N.A.	±.015	FLAT LG. (IF REQ.)
D	N.A.	±2°	FLAT ANGLE (IF REQ.)
E	N.A.	±.002	FLAT (IF REQUIRED)
F	17/32"	±.010	KEY LOCATION (IF REQ.)
G	0°		KEY LOCATION (IF REQ.)
M	0"	±.010	
N	1/16"	±.093	REAR SCR. EXT.
Q	1/16"	±.031	REAR SHAFT EXT.
R	3/8"		1st SEC. SPACING

TMC PART NUMBER: SW-315 STAMP ON FRONT PLATE
FRONT PLATE SHAPE: ROUND OR OBLONG X
MECHANICAL SPECIFICATIONS:
NUMBER OF SECTIONS- 2
NUMBER OF POSITIONS- 12
ANGLE OF THROW- 30°
CONTACTS:
SHORTING TYPE, SECTIONS _____
NON SHORTING TYPE, SECTIONS 1 AND 2
SILVER PLATED BRASS, SECTIONS _____
SILVER ALLOY, SECTIONS 1 AND 2
WAFERS:
BAKELITE, SECTIONS _____
CERAMIC, SECTIONS _____
MYCALEX, SECTIONS 1 AND 2
IMPREGNATION (IF REQ.) _____
FINISH REQUIREMENTS:
ARMY NAVY COMMERCIAL _____
SALT TEST (IF REQ.) _____
HARDWARE, TO BE SUPPLIED BY MANUFACTURER:
1 QUAN. 3/8 -32 NUTS 9/16" ACROSS FLATS
MATERIAL BRASS PLATING CADMIUM
1 QUAN. INTERNAL TOOTH LOCKWASHER
MATERIAL BRONZE PLATING CADMIUM
ELECTRICAL SPECIFICATIONS:
MAXIMUM RATED VOLTAGE _____
MAXIMUM RATED CURRENT _____

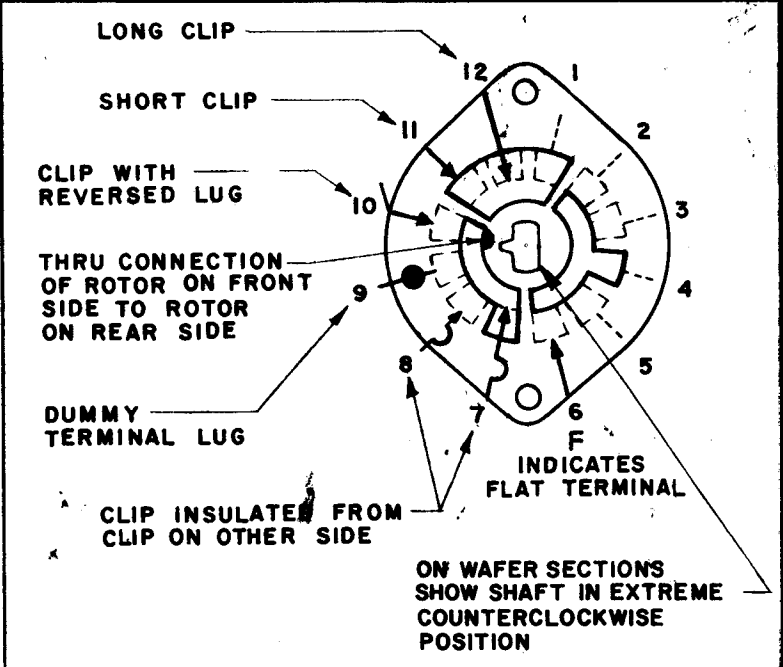
NOTE:
FOR S401-13 ("F" TYPE) SWITCHES, THE SHAFT POSITION MUST BE SPECIFIED ON DETAIL "XX" BELOW.



NOTES



NOTE: OBLONG TYPE FRONT PLATE SHOWN, (SEE MECHANICAL SPECIFICATION)



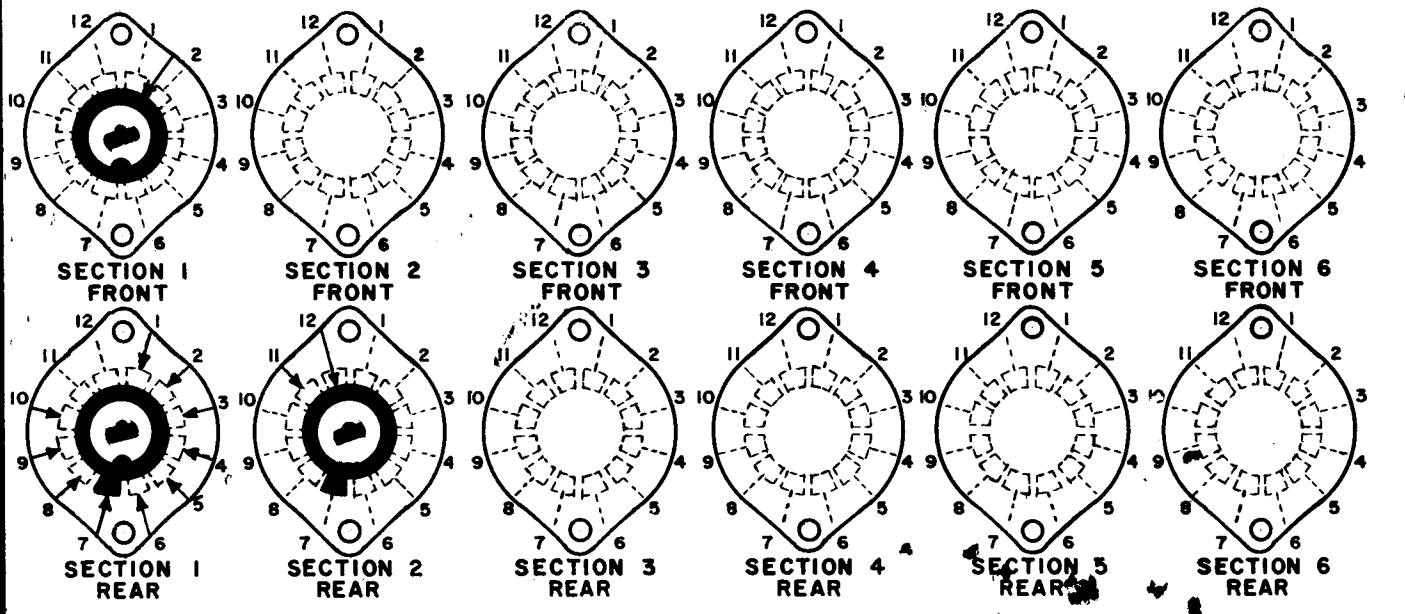
SYMBOLS USED IN MARKING PRINT

QTY./UNIT	MODEL USED ON	ASS'Y. NO.
SCALE	CODE	
	A	

THE CONTENTS OF THIS DRAWING ARE THE EXCLUSIVE PROPERTY OF THE TECHNICAL MATERIEL CORP. ITS UNAUTHORIZED USE OR REPRODUCTION IN WHOLE OR IN PART IS STRICTLY FORBIDDEN.

REVISIONS						
SYM	DESCRIPTION	DATE	E.M.N. NO.	DRAFT	CHKD	APPD
A	REVISED & REDRAWN COMPLETELY	10.6.64	12537	WPS		

FRONT AND REAR SECTIONS VIEWED FROM FRONT OR KNOB END OF SWITCH IN EXTREME COUNTERCLOCKWISE POSITION. SEE NOTE (DET. "XX")



SWITCH, ROTARY - 12 POINT TYPE "F"

MATERIAL	THE TECHNICAL MATERIEL CORP. MAMARONECK, NEW YORK			
FINISH	TITLE SWITCH, ROTARY			
UNLESS OTHERWISE SPECIFIED DIMENSIONS ARE IN INCHES AND INCLUDE CHEMICALLY APPLIED OR PLATED FINISHES	DRAWN	DATE	FINAL APPROVAL	DATE
	CHECKED	DATE		
DECIMALS .X ± .05 .XX ± .01 .XXX ± .005	TOLERANCES	FRACTIONS ± 1/64 ANGLES ± 0° 30'	ELECT. DES.	DATE
			MECH. DES.	DATE
			SW 315	A
			SHEET	REV. LTR.