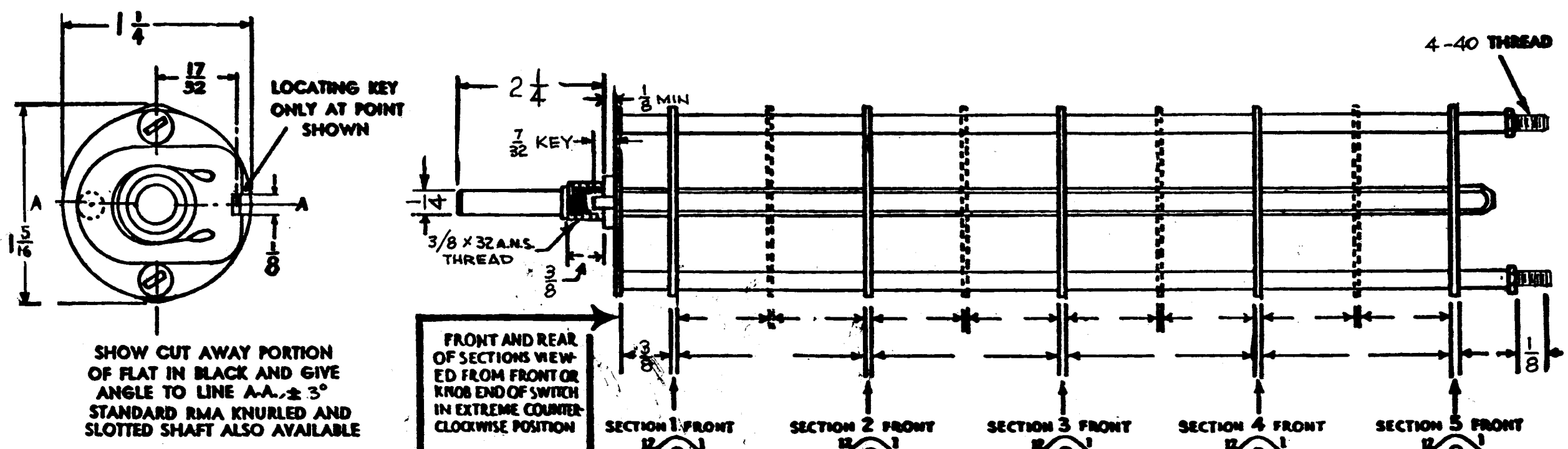
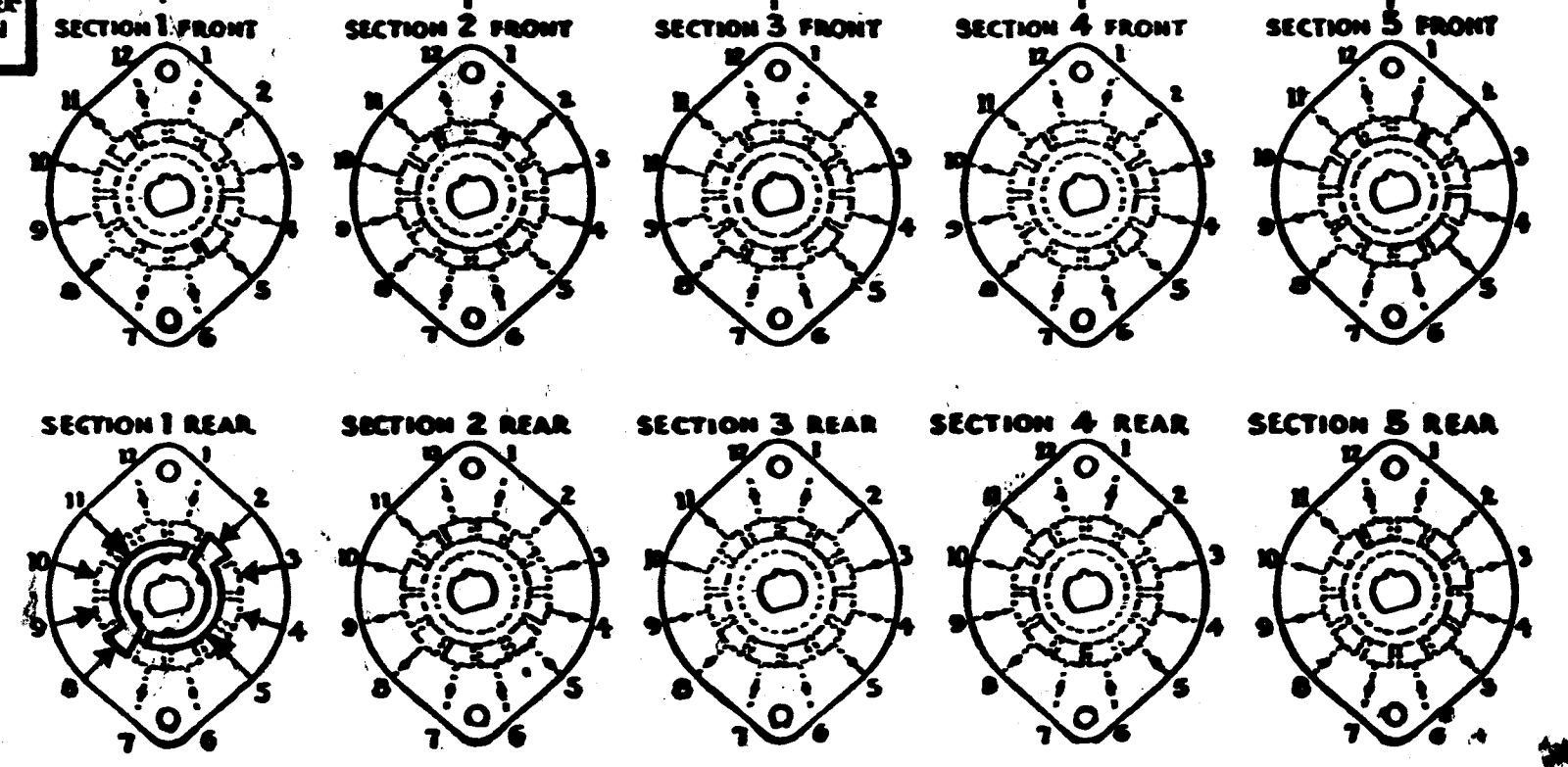
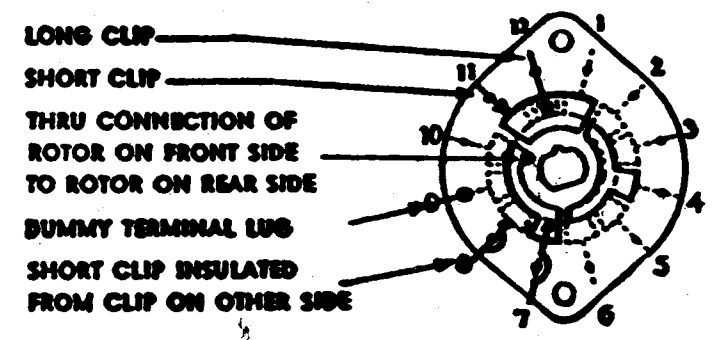


SW-314



NUMBER OF SECTIONS 1
 NUMBER OF POSITIONS 3
 ANGLE OF THROW 30°

SYMBOLS USED IN MARKING PRINT



OUTLINE ROTOR BLADES AS SHOWN ABOVE WITH SWITCH IN EXTREME COUNTER-CLOCKWISE POSITION

CUSTOMER NOTES

TYPE "F"

SYM	DESCRIPTION	DATE	CH. NO.	DRAFTS	CHECKER	ENG. APP.
UNLESS OTHERWISE SPECIFIED:		SCALE: S 401-13				
DIMENSIONS ARE IN INCHES		MAXIMUM ALLOWABLE TOLERANCES HAVE BEEN DETERMINED AND ANY DEVIATIONS WILL BE CAUSE FOR REJECTION. REMOVE ALL BURRS AND SHARP EDGES				
TOLERANCES ON FRACTIONS ± 1/64		DECIMALS ± .005		ANGLES ± 1/2°		

SPECIFICATIONS

SHORTING TYPE CONTACTS NON-SHORTING IF NOT SPECIFIED SHORTING TYPE WILL BE SUPPLIED.
 INSULATION: 1/16" BAKELITE 1/16" NY CALEX SPECIFY IMPREGNATION IF REQUIRED.
 FINISH REQUIREMENTS: COMMERCIAL ARMY NAVY SALT TEST (IF ANY GIVE DETAILS).
 CONTACTS AND ROTORS: SILVER PLATED BRASS SOLID SILVER ALLOY IF NOT SPECIFIED SILVER PLATED BRASS WILL BE SUPPLIED.
 MOUNTING HARDWARE: SUPPLY..... 3/8" - 32 NUTS..... ACROSS FLATS; INTERNAL..... PLATING.....
 STAMP PART NUMBER SW-314 (Number) ON FRONT PLATE, YES NO

REQ. PER UNIT	MODEL	SECTION	ASS'Y. NO.	DATE
1	TRX-1			
USED ON				

REQ. ITEM	PART NO.	GELLMAN	DESCRIPTION	SYMBOL
STOCK SIZE		THE TECHNICAL MATERIEL CORP., MAMARONECK, NEW YORK		
MATERIAL		SWITCH, ROTARY		
TYPE & TEMPER	HEAT TREAT. SPEC.	DRAWN	CHECKER	FINAL APPROVAL
FINISH & SPEC. NO.		ELEC. DES. APP.	MECH. DES. APP.	SW-314