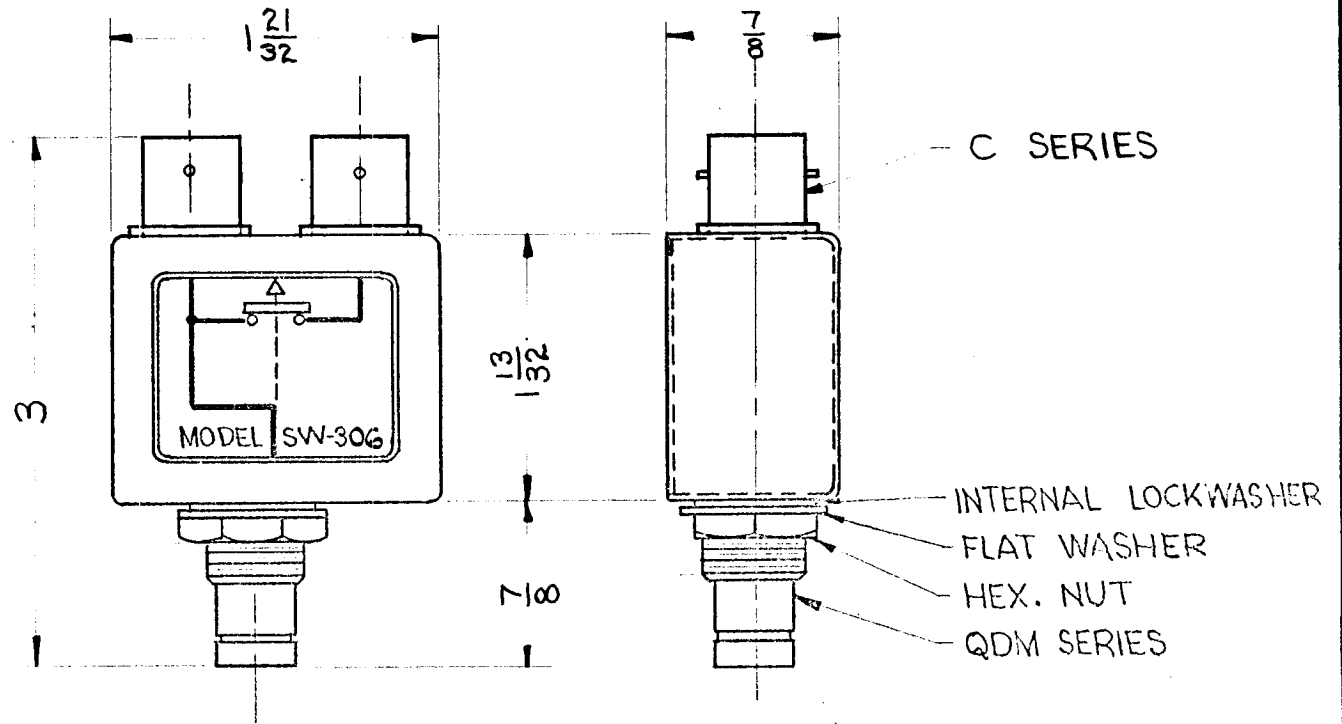


THE CONTENTS OF THIS DRAWING ARE THE EXCLUSIVE PROPERTY OF THE TECHNICAL MATERIEL CORP. ITS UNAUTHORIZED USE OR REPRODUCTION IN WHOLE OR IN PART IS STRICTLY FORBIDDEN.

REQ. PER UNIT	USED ON			SW-306 A
	MODEL	ASS'Y. NO.	DATE	
	SW-306			



NOTES:
CASE - MATERIAL - BRASS
FINISH: S115 TMC SMOOTH
GREY ENAMEL
CONNECTORS FINISH -
BODIES - RHODIUM FLASH
CONTACTS - GOLD FLASH

NOTE: ASSIGNED PATENT NO. 2,767,267

REQ.	ITEM	PART NO.	DESCRIPTION			SYMBOL
			THE TECHNICAL MATERIEL CORP. MAMARONECK, NEW YORK			
			STOCK SIZE			
A	PATENT NOTE ADDED	9/29/65 14846	F.V.	QOB	MM	SEE NOTES
			MATERIAL			
			TYPE & TEMPER			
			HEAT TREAT. SPEC.			
			DRAWN			
			CHECKED			
			FINAL APPROVAL			
			FINISH & SPEC. NO.			
			ELEC. DES. APP.			
			MECH. DES. APP.			

UNLESS OTHERWISE SPECIFIED:
DIMENSIONS ARE IN INCHES
TOLERANCES ON
FRAC. $\pm 1/64$ DEC. $\pm .005$ ANGLES $\pm 1/2^\circ$

2A-2457
MAXIMUM ALLOWABLE TOLERANCES HAVE BEEN DETERMINED AND ANY DEVIATIONS WILL BE CAUSE FOR REJECTION.
REMOVE ALL BURRS AND SHARP EDGES

R. Junction
6-5-62
J. De
SW-306 A