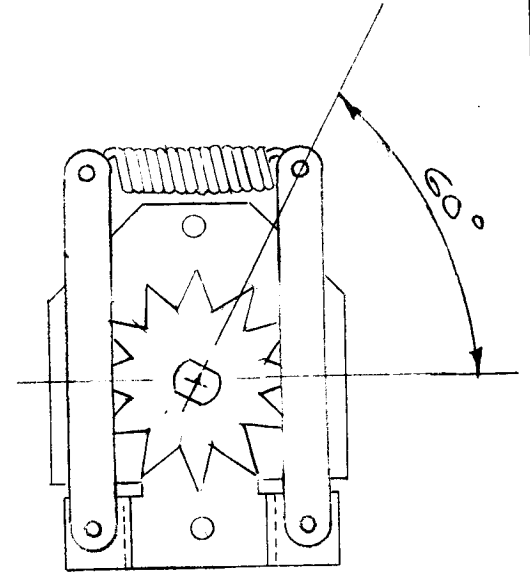
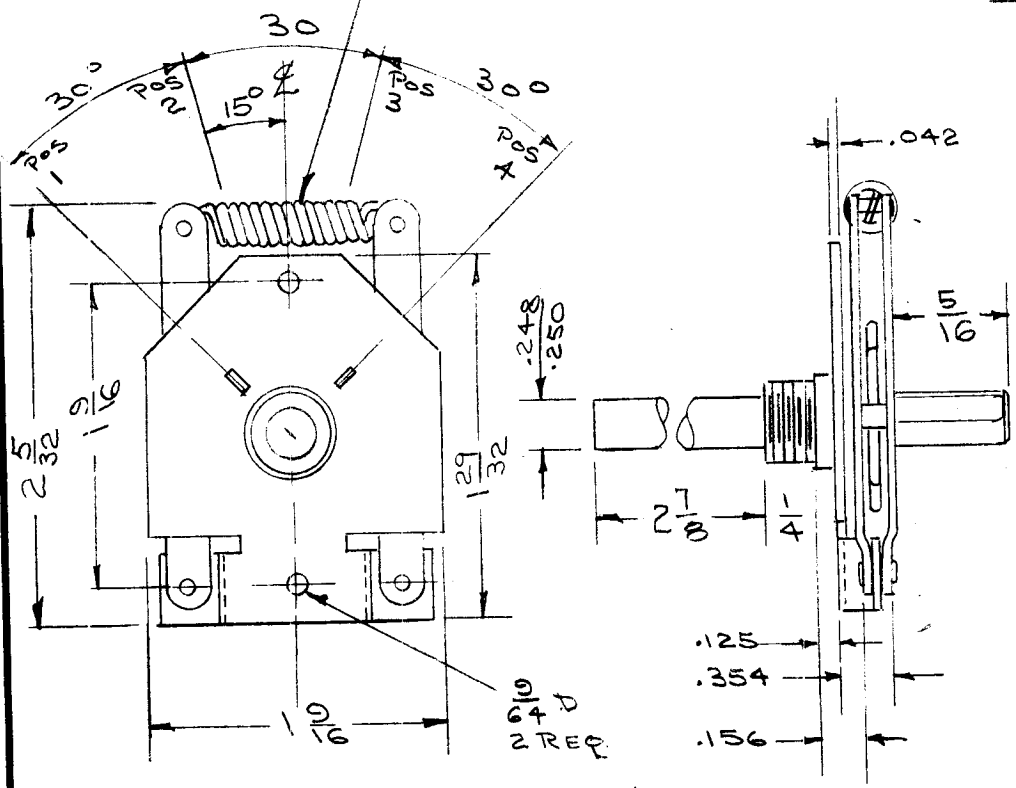


NOTES:  
CENTRALAB SPRING  
NO. P-4759

REQ. PER UNIT	USED ON		
	MODEL	ASS'Y. NO.	DATE
1	SBE-1	A-1396	
1	SBE-2	A-1516	5-5-58
1	SBE-3	AP-100	11-30-59

SW-201 E



NOTE  
WHEN INDEX IS IN POSITION 1  
FLAT ON REAR SHAFT MUST  
BE IN POS. SHOWN

NOTE  
POSITIONS - 4  
STOPS - 30° INDEX

REF: CENTRALAB TYPE G INDEX

E	1	CENTRALAB SPRING # WAS P5185	4/30/58	5	JAE	1/2/6	JAE
D	1	CENTRALAB SPRING No. Added	4/3/58	4	JAE		JAE
C	1	2 7/8 Shaft Length was 3/4	1 1/2/57	3	KB	JAE	QPB
B	1	Shaft length was 3 7/8 Front - 1/2 Rear	8/29/57	2	KB	2B	QPB
A	1	Flat on Rear Shaft was 45°	7/15/57	1	JAE	2B	QPB
ISSUE	ITEM	CHANGED FROM	DATE	CH. NO.	DRAFTS	CHECKER	ENG. APP.

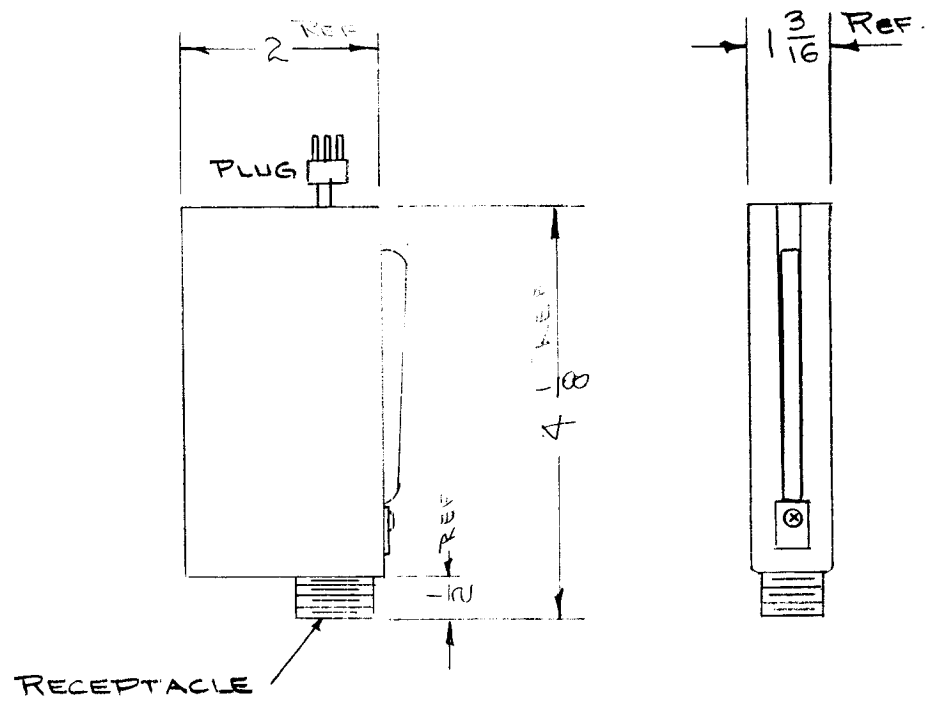
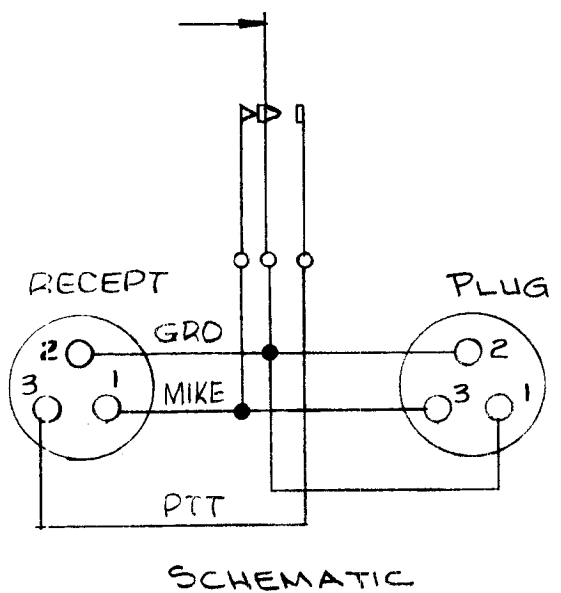
REQ. ITEM	PART NO.	DESCRIPTION	SYMBOL
		THE TECHNICAL MATERIEL CORP. MAMARONECK, NEW YORK	
		STOCK SIZE	
		SWITCH, INDEX	
		MODEL SBE	
		MATERIAL	
		TYPE & TEMPER	
		HEAT TREAT. SPEC.	
		DRAWN	
		CHECKED	
		FINISH & SPEC. NO.	
		ELEC. DES. APP.	
		MECH. DES. APP.	
		FINAL APPROVAL	

TOLERANCES  
DEC. DIM. ±  
FRAC. DIM. ±  
ANGULAR DIM. ±

SCALE:  
MAXIMUM ALLOWABLE TOLERANCES HAVE BEEN DETERMINED AND ANY DEVIATIONS WILL BE CAUSE FOR REJECTION.  
REMOVE ALL BURRS AND SHARP EDGES

S105 CADMIUM PLATE  
DRAWN: QB  
CHECKED: QPB  
FINAL APPROVAL: SW-201 E

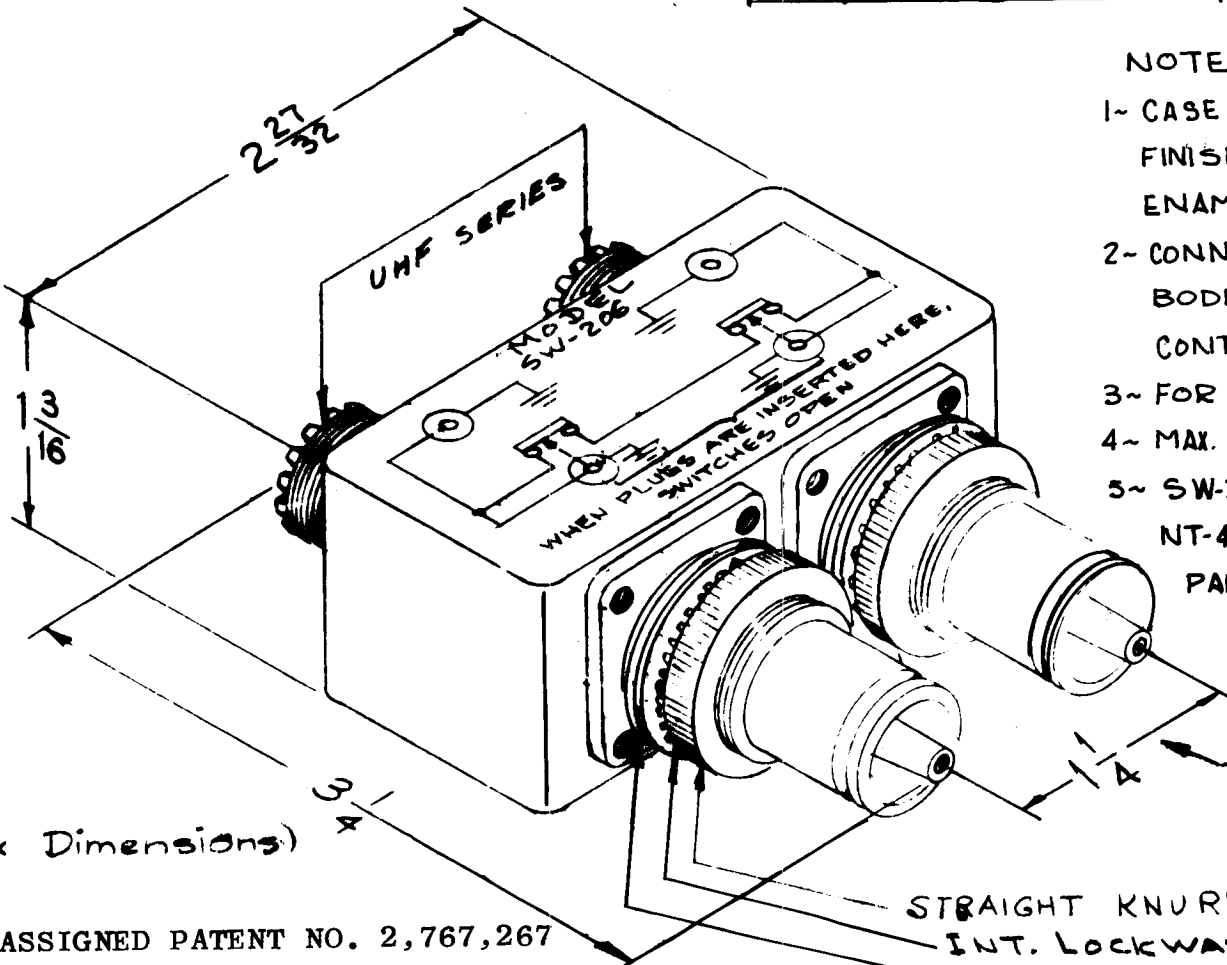
REQ. PER UNIT	USED ON			SW-204	A
	MODEL	ASS'Y. NO.	DATE		
1	MK-103	SW-205	10-16-57		



REF: SHURE # A88A

REQ. ITEM	PART NO.	DESCRIPTION	SYMBOL
		THE TECHNICAL MATERIEL CORP. MAMARONECK, NEW YORK	
		SWITCH, MICROPHONE (GRIP TO TALK)	
A		SCHMATIC REVISED 12.2.66 (17381) WND [Signature]	
ISSUE ITEM	CHANGED FROM	DATE	CH. NO. DRAFTS CHECKER ENG. APP.
TOLERANCES		SCALE:	
DEC. DIM. ± FRAC. DIM. ± ANGULAR DIM. ±		MAXIMUM ALLOWABLE TOLERANCES HAVE BEEN DETERMINED AND ANY DEVIATIONS WILL BE CAUSE FOR REJECTION. REMOVE ALL BURRS AND SHARP EDGES	
TYPE & TEMPER		HEAT TREAT. SPEC.	DRAWN
SATIN CHROME			CHECKED
FINISH & SPEC. NO.		ELEC. DES. APP.	MECH. DES. APP.
			SW-204 A

REP. VISIT	USED ON			SW-206	E
	MODEL	ASSEMBY NO.	DATE		
11	SPP-3		12-23-57		
12	SPP-10		4-23-59		



NOTES:

- 1- CASE - MATERIAL - BRASS  
FINISH - S115 TMC SMOOTH GRAY ENAMEL.
- 2- CONNECTORS FINISH:  
BODIES - RHODIUM FLASH.  
CONTACTS - GOLDFLASH.
- 3- FOR MOUNTING - 13/16 DIA. HOLES
- 4- MAX. PANEL THICKNESS - 3/16
- 5- SW-206 REPLACES 2 NAVY TYPE NT-491388 PART OF NAVY TYPE PANEL SB-932/U.

(Approx Dimensions)

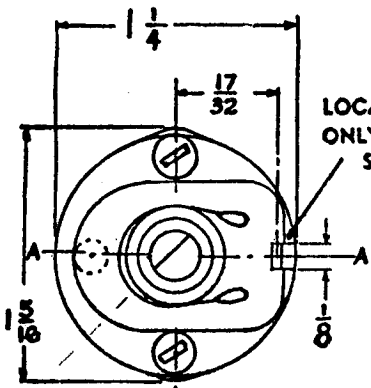
NOTE: ASSIGNED PATENT NO. 2,767,267

REQ. ITEM	PART NO.	DESCRIPTION	SYMBOL
		THE TECHNICAL MATERIEL CORP. MAMARONECK, NEW YORK	
		SWITCH, RF	
		DUAL UHF      DUAL QDS.	
E		PATENT NOTE ADDED 9/29/65 14846 H.V. [Signature]	
D	2	NOTES ADDED 2-28-63 8214 [Signature]	
D	1	PICTORIAL CLARIFIED	
ISSUE	ITEM	CHANGED FROM	DATE
		2A-1489	
		MAXIMUM ALLOWABLE TOLERANCES HAVE BEEN DETERMINED AND ANY DEVIATIONS WILL BE CAUSE FOR REJECTION. REMOVE ALL BURRS AND SHARP EDGES	
		TYPE & TEMPER [Signature]	DRAWN
		FINISH & SPEC. NO.	CHECKED
		ELEC. DES. APP.	MECH. DES. APP.
			APPROVAL
			SW-206 E

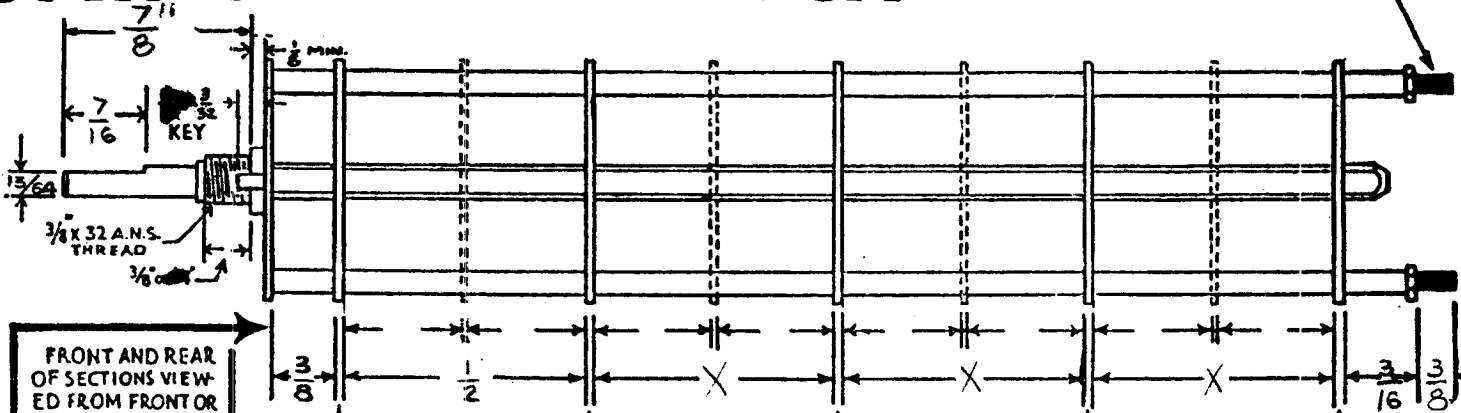
ATS CONTROL MODEL  
SW-208-A  
4-40 THREAD

# OAK TYPE F SWITCH

CUSTOMER The Technical Material Corporation CUSTOMERS SW-208-208  
OAK MFG. CO. 1260 CLYBOURN AVE., CHICAGO 10, ILL.



LOCATING KEY ONLY AT POINT SHOWN

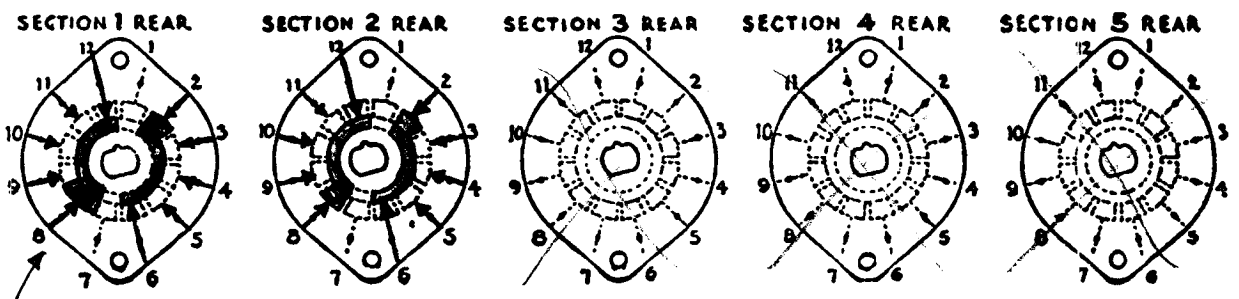
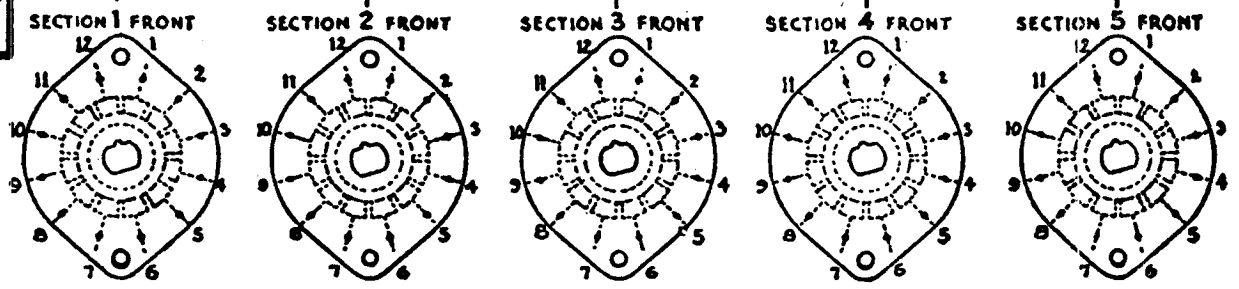
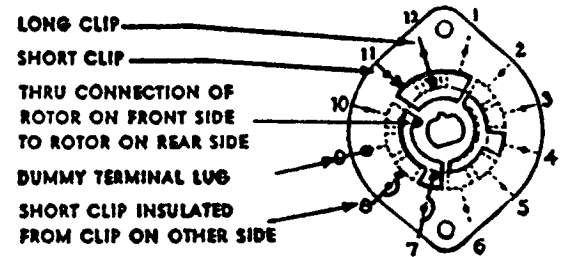


SHOW CUT AWAY PORTION OF FLAT IN BLACK AND GIVE ANGLE TO LINE A-A, ± 3° STANDARD RMA KNURLED AND SLOTTED SHAFT ALSO AVAILABLE

FRONT AND REAR OF SECTIONS VIEWED FROM FRONT OR KNOB END OF SWITCH IN EXTREME COUNTER-CLOCKWISE POSITION

NUMBER OF SECTIONS  $\frac{2}{4}$   
NUMBER OF POSITIONS  $\frac{2}{4}$   
ANGLE OF THROW  $\frac{30}{(30^\circ \text{ OR } 60^\circ)}$

### SYMBOLS USED IN MARKING PRINT



OUTLINE ROTOR BLADES AS SHOWN ABOVE WITH SWITCH IN EXTREME COUNTER-CLOCKWISE POSITION

SHORTING CONTACT

*All others are non-shorting*

CUSTOMER NOTES

### SPECIFICATIONS

SHORTING TYPE CONTACTS  NON-SHORTING  IF NOT SPECIFIED SHORTING TYPE WILL BE SUPPLIED.  
INSULATION:  $\frac{1}{16}$  BAKELITE   $\frac{1}{8}$  MYCALEX  SPECIFY IMPREGNATION IF REQUIRED.  
FINISH REQUIREMENTS: COMMERCIAL  ARMY  NAVY  SALT TEST (IF ANY GIVE DETAILS).  
CONTACTS AND ROTORS: SILVER PLATED BRASS  SOLID SILVER ALLOY  IF NOT SPECIFIED SILVER PLATED BRASS WILL BE SUPPLIED.  
MOUNTING HARDWARE: SUPPLY  $\frac{1}{8}$ " . 32 NUTS  $\frac{1}{2}$ " ACROSS FLATS; MATERIAL brass PLATING Nickel  
 $\frac{1}{8}$ " INTERNAL TOOTH LOCKWASHER; MATERIAL brass PLATING Nickel  
STAMP PART NUMBER SW-208 ON FRONT PLATE, YES  NO

SWITCH, ROTARY MODEL ATS-MCU-2	
THE TECHNICAL MATERIAL CORPORATION MAMARONECK, NEW YORK	
DATE <u>1-17-58</u>	CHKD. <u>SPF</u>
DRAWN <u>[Signature]</u>	APPD. <u>[Signature]</u> <u>AJT</u>
SHEET <u>OF</u>	NO. <u>SW-208</u> <u>A</u>

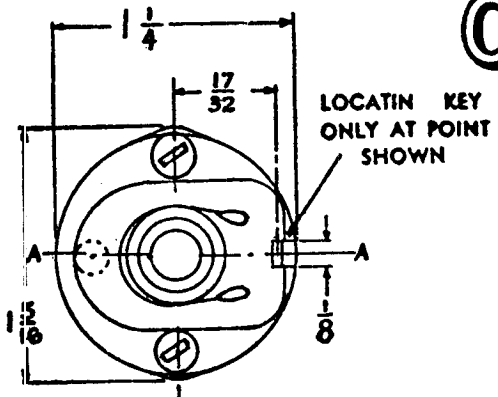
DATE 1-17-58



CUSTOMER'S SW-209-A  
PART NO.

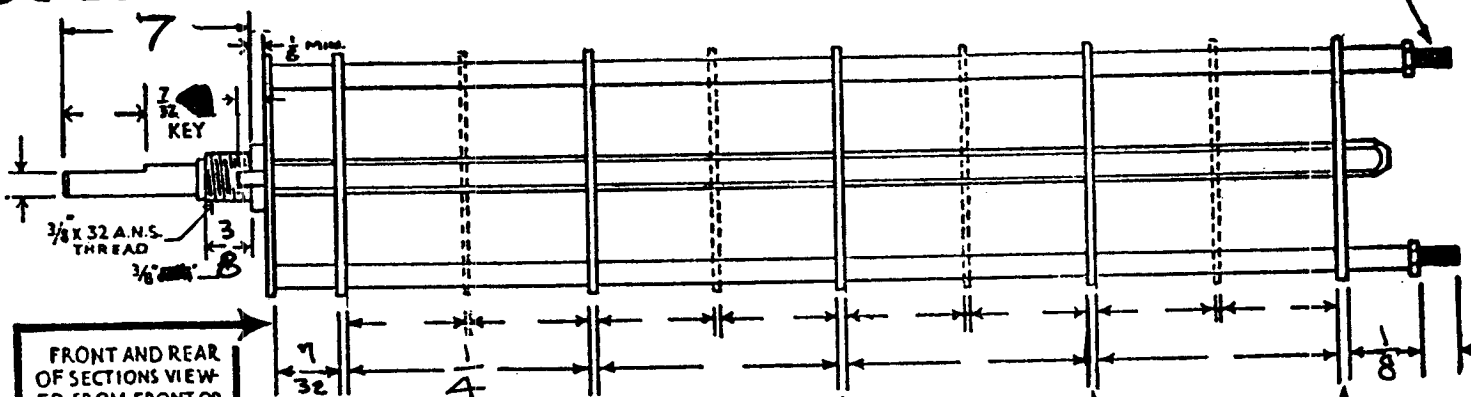
SW-209

# OAK TYPE F SWITCH



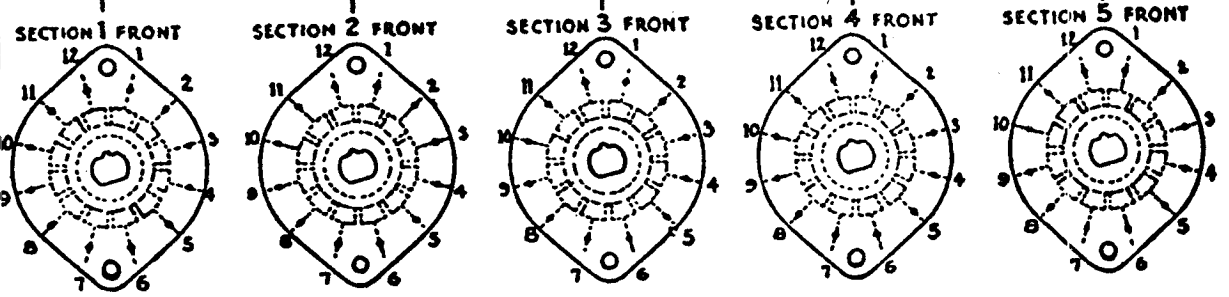
LOCATE KEY ONLY AT POINT SHOWN

SHOW CUT AWAY PORTION OF FLAT IN BLACK AND GIVE ANGLE TO LINE A-A.  $\pm 3^\circ$  STANDARD RMA KNURLED AND SLOTTED SHAFT ALSO AVAILABLE

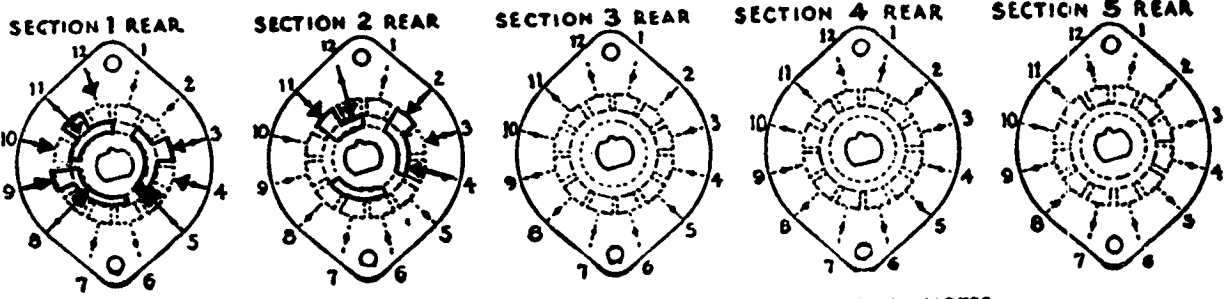
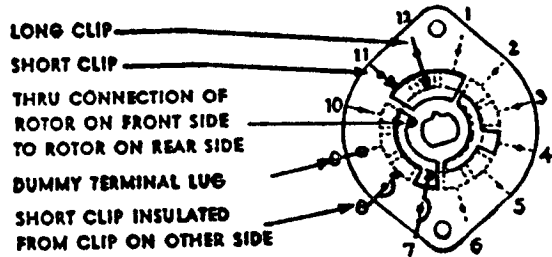


FRONT AND REAR OF SECTIONS VIEWED FROM FRONT OR KNOB END OF SWITCH IN EXTREME COUNTER-CLOCKWISE POSITION

NUMBER OF SECTIONS  $\frac{2}{2}$   
NUMBER OF POSITIONS  $\frac{2}{2}$   
ANGLE OF THROW  $30^\circ$  ( $30^\circ$  ~~OR~~  $10^\circ$ )



### SYMBOLS USED IN MARKING PRINT



### CUSTOMER NOTES

OUTLINE ROTOR BLADES AS SHOWN ABOVE WITH SWITCH IN EXTREME COUNTER-CLOCKWISE POSITION

### SPECIFICATIONS

SHORTING TYPE CONTACTS  NON-SHORTING  IF NOT SPECIFIED SHORTING TYPE WILL BE SUPPLIED.  
INSULATION:  $\frac{1}{16}$ " BAKELITE ;  $\frac{1}{8}$ " MYCALEX  SPECIFY IMPREGNATION IF REQUIRED  
FINISH REQUIREMENTS: COMMERCIAL ; ARMY ; NAVY ; SALT TEST (IF ANY GIVE DETAILS)  
CONTACTS AND ROTORS: SILVER PLATED BRASS ; SOLID SILVER ALLOY ; IF NOT SPECIFIED SILVER PLATED BRASS WILL BE SUPPLIED.  
MOUNTING HARDWARE: SUPPLY  $\frac{3}{8}$ " .32 NUTS \_\_\_\_\_ ACROSS FLATS; MATERIAL \_\_\_\_\_ PLATING \_\_\_\_\_  
 $\frac{3}{8}$ " INTERNAL TOOTH LOCKWASHER; MATERIAL \_\_\_\_\_ PLATING \_\_\_\_\_

STAMP PART NUMBER SW-209-A NON FRONT PLATE, YES  NO   
(NUMBER)

SWITCH, ROTARY SSB S204		Model GPT-750 (RTF)	
THE TECHNICAL MATERIAL CORPORATION			
MAMARONECK, NEW YORK			
DATE	1-31-58	CHD.	<i>[Signature]</i>
DRAWN	<i>[Signature]</i>	A-PD.	<i>[Signature]</i>
SHEET	OF	NO	SW-209   A

DATE \_\_\_\_\_

CUSTOMER

OAK MFG. CO.

1260 CLYBURN AVE, CHICAGO 10, ILL

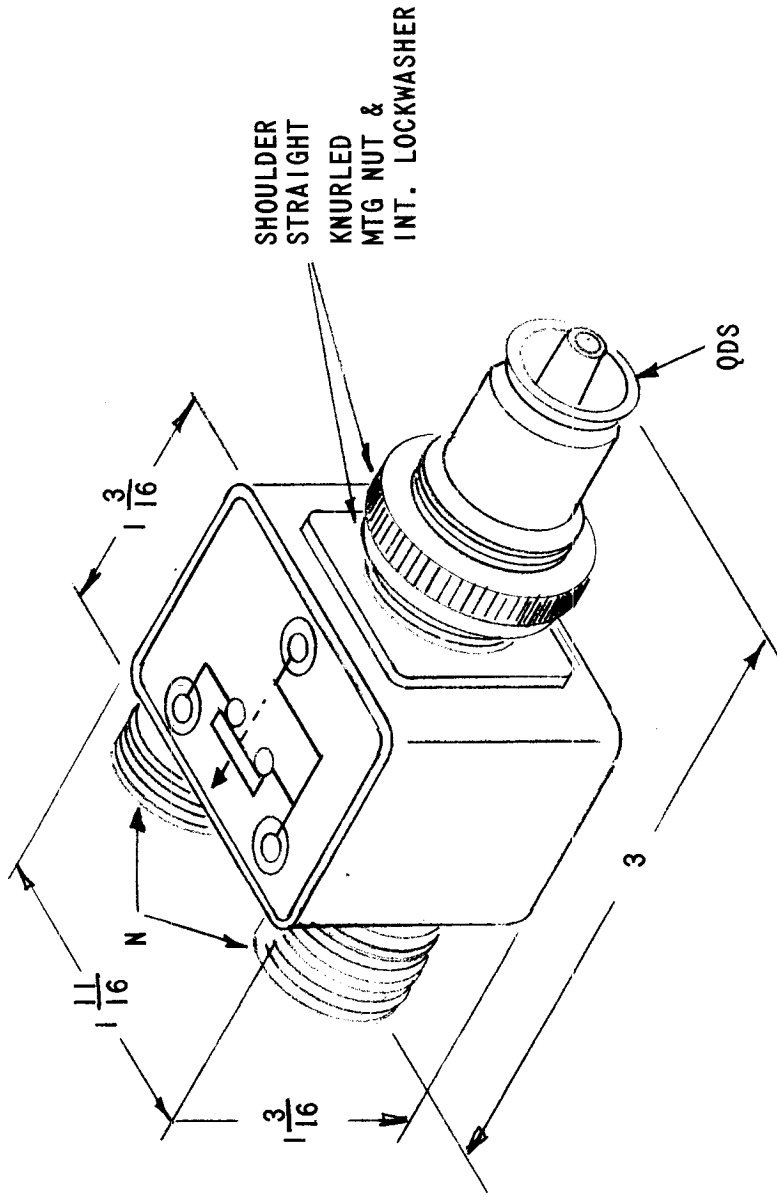


# APPLICATION

QTY	MODEL USED ON	ASS'Y NO.	LTR	DESCRIPTION	DATE	E.M.N. NO	DRAFT	CHKD	APPD
	SW211		X	EXPERIMENTAL RELEASE	9/11/68		C.V.		<i>CM</i>
			Ø	ORIG. RELEASE FOR PROD.	9-16-68	Ø	R.G.		<i>JL</i>

# REVISIONS

QTY	MODEL USED ON	ASS'Y NO.	LTR	DESCRIPTION	DATE	E.M.N. NO	DRAFT	CHKD	APPD
	SW211		X	EXPERIMENTAL RELEASE	9/11/68		C.V.		<i>CM</i>
			Ø	ORIG. RELEASE FOR PROD.	9-16-68	Ø	R.G.		<i>JL</i>



## NOTES:

1. CASE - MATERIAL: BRASS  
FINISH: S115 TMC SMOOTH GRAY ENAMEL
2. CONNECTORS FINISH:  
BODIES: RHODIUM FLASH  
CONTACTS: GOLD FLASH
3. FOR MOUNTING: 13/16 DIA HOLE REQ
4. MAX PANEL THICKNESS: 3/16

UNLESS OTHERWISE SPECIFIED  
DIMENSIONS ARE IN INCHES  
AND INCLUDE CHEMICALLY APPLIED  
OR PLATED FINISHES

DECIMALS FRACTIONS  
.X ± .05 1/64  
.XX ± .01 ANGLES  
.XXX ± .005 0°-30'

MATERIAL

FINISH

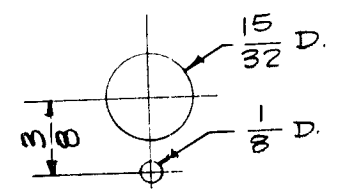
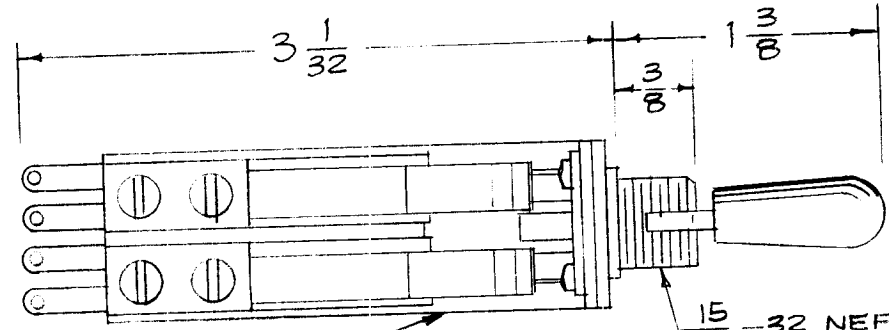
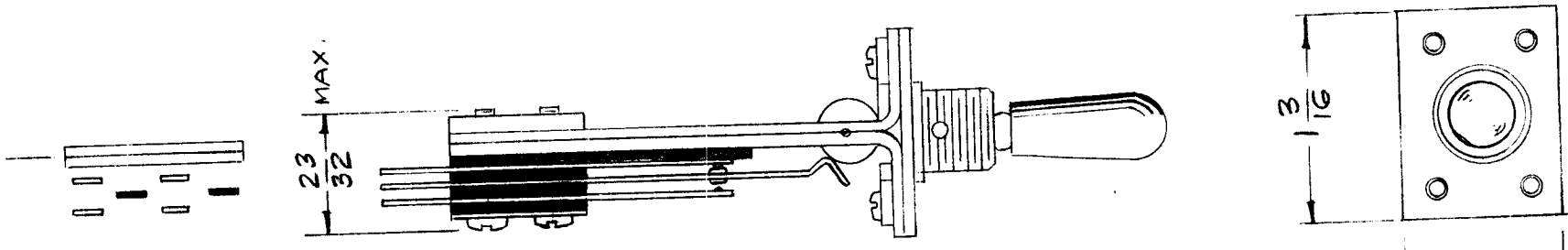
2A4749

**NOTICE TO PERSONS RECEIVING THIS DRAWING**  
THE TECHNICAL MATERIEL CORPORATION claims proprietary right in the material disclosed herein. This drawing is issued in confidence for engineering information only and may not be reproduced or used to manufacture anything shown herein without permission from THE TECHNICAL MATERIEL CORPORATION to the user. This drawing is loaned for mutual assistance and is subject to recall at any time.

REQ'D	ITEM	PART NUMBER	DESCRIPTION	SYM.
LIST OF MATERIAL				
THE TECHNICAL MATERIEL CORP. MAMARONECK, NEW YORK				
SWITCH, RF DUAL N TO SINGLE QDS				
FINAL APPROVAL	<i>[Signature]</i>	DATE	9-16-68	
MECH. DES.		DATE		
ELECT. DES.		DATE		
CHECKED	<i>[Signature]</i>	DATE	9/12/68	
DRAWN	<i>[Signature]</i>	DATE	9/12/68	
SIZE	A	CODE IDENT. NO.	82679	DWG NO.
SCALE				SHEET
				OF
				ISSUE

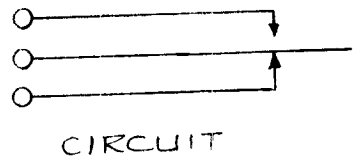


REQ. PER UNIT	USED ON			SW-212	B
	MODEL	ASS'Y. NO.	DATE		
2	AT5-MCU		2-5-58		



METAL STAMP TMC PART No. 32  
15-32 NEF THD.

ON LEG  
MFG. WILL SUPPLY ONE Hex Nut - 9/16" across flats - 15/32-32 THD, 1/16" THK, and one Non-Turn Washer

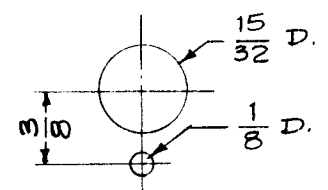
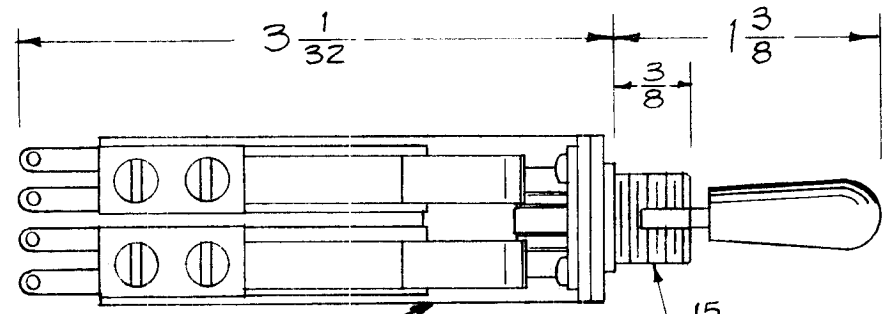
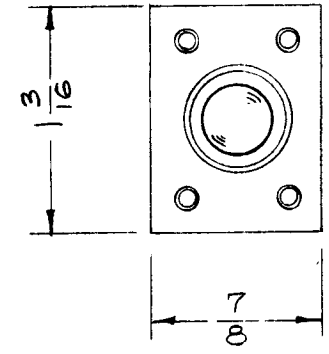
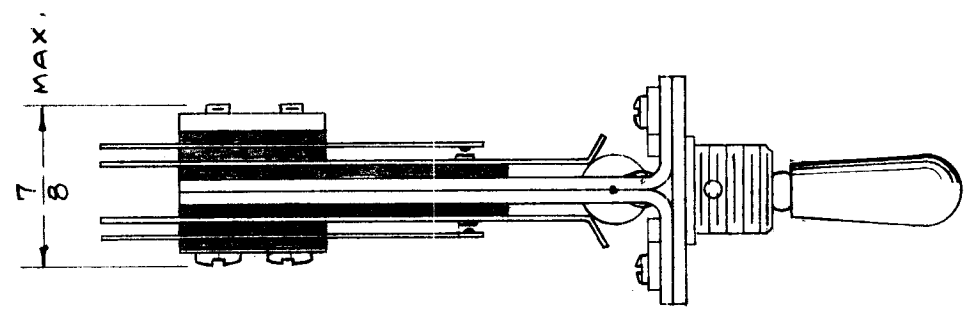
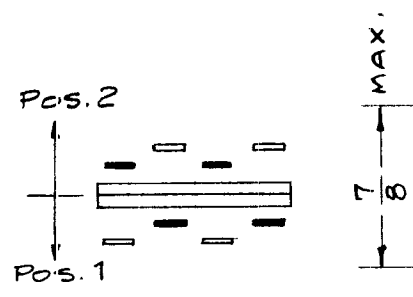


REF-SWITCHCRAFT, INC. # 16006

								REQ. ITEM	PART NO.	DESCRIPTION	SYMBOL	
								✓		<b>THE TECHNICAL MATERIEL CORP.</b> MAMARONECK, NEW YORK SWITCH, LEVER, 2 POS. NON-LOCKING		
									STOCK SIZE			
								✓				
									MATERIAL			
B	1	TMC #PT.No. RELOCATED	4/5/58	2	ONE				46 2/5/58	AD		
A	1	METAL STAMP ADDED	3/5/58	1	16							
ISSUE	ITEM	CHANGED FROM	DATE	CH. NO.	DRAFTS	CHECKER	ENG. APP.					
TOLERANCES			SCALE:									
DEC. DIM. ±			MAXIMUM ALLOWABLE TOLERANCES HAVE BEEN DETERMINED AND ANY DEVIATIONS WILL BE CAUSE FOR REJECTION.									
FRAC. DIM. ±			REMOVE ALL BURRS AND SHARP EDGES									
ANGULAR DIM. ±												
								TYPE & TEMPER	HEAT TREAT. SPEC.	DRAWN	CHECKED	FINAL APPROVAL
										YAA	AD	SW-212
								FINISH & SPEC. NO.		ELEC. DES. APP.	MECH. DES. APP.	B

REQ. PER UNIT	USED ON		
	MODEL	ASSY. NO.	DATE
1	ATS-MCU		2-5-58
1	ATS-MCU-2		6-8-59

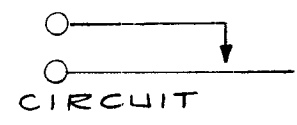
SW-213 B



METAL STAMP TMC PART No. ON LEG  
15/32 - 32 NEF THD.

MOUNTING DETAIL  
(For Non-Turn Washer)

MFG. Will Supply one Hex Nut - 9/16" across Flats - 15/32 - 32 Thd, 1/16" THK, and one Non-Turn Washer



CIRCUIT  
TWO IN POS. 1  
TWO IN POS. 2

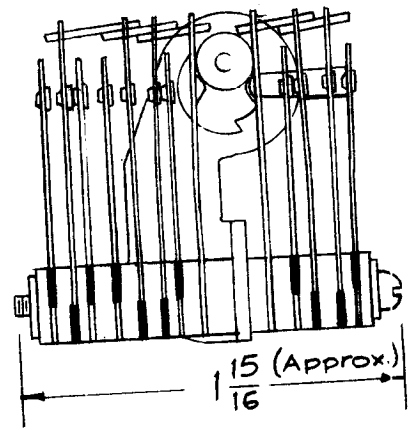
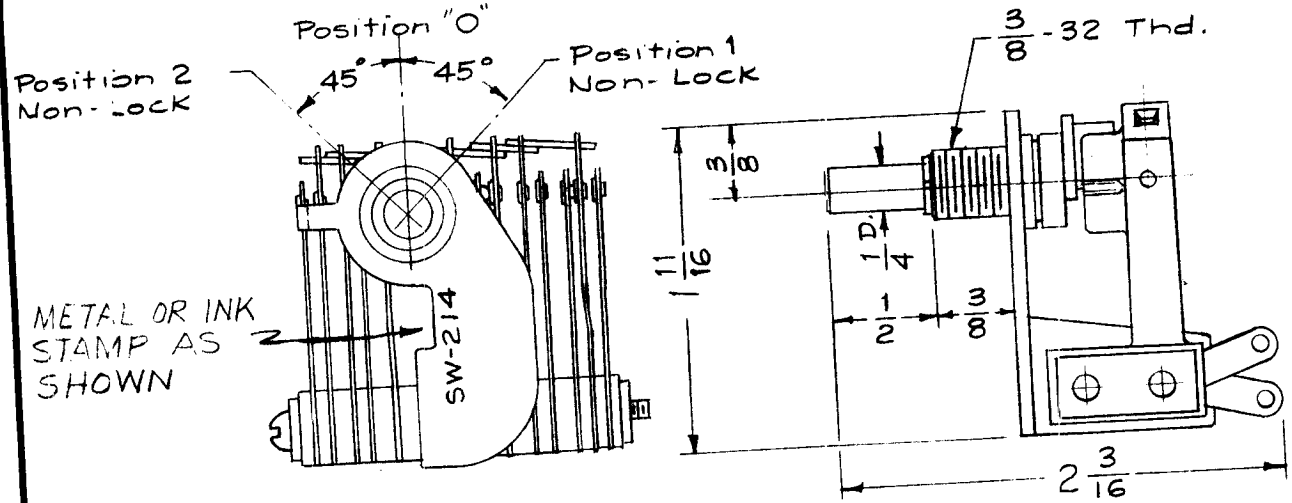
REF- SWITCHCRAFT, INC. #16038

REQ.	ITEM	PART NO.	DESCRIPTION				SYMBOL
			THE TECHNICAL MATERIEL CORP. MAMARONECK. NEW YORK				
B	1	TMC PART No. RELOCATED	6/5/58	2	ENC	ah	SWITCH, LEVER, 3 POS. NON-LOCKING
A	1	METAL STAMP ADDED	3/5/58	1	16	ah	
ISSUE	ITEM	CHANGED FROM	DATE	CH. NO.	DRAFTS	CHECKER	ENG. APP.
TOLERANCES			SCALE: FULL				
DEC. DIM. ±			MAXIMUM ALLOWABLE TOLERANCES HAVE BEEN DETERMINED AND ANY DEVIATIONS WILL BE CAUSE FOR REJECTION. REMOVE ALL BURRS AND SHARP EDGES				
FRAC. DIM. ±							
ANGULAR DIM. ±							
TYPE & TEMPER		HEAT TREAT. SPEC.	DRAWN		CHECKED	FINAL APPROVAL	
FINISH & SPEC. NO.		ELEC. DES. APP.		MECH. DES. APP.		SW-213 B	

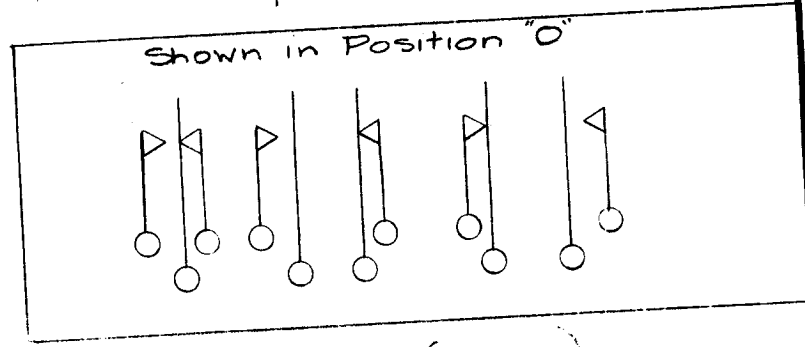
**Note:**

- The following items to be supplied by Mfa.
- 1 each flat washer - 9/16 O.D., 3/8 I.D., .040 Thk.
- 1 each Internal lockwasher - 9/16 O.D., 3/8 I.D., .025 Thk.
- 1 each Hex. Nut - 3/8-32 Thds., 1/2 across flats, 3/32 Thk.

REQ. PER UNIT	USED ON		DATE	SW-214	A
	MODEL	ASS'Y. NO.			
	1	ATS-MCU			
	ATS-MCU-2	7-8-59			



- Specifications:**
- Contacts - Silver, 1/8" Diam., Rated at 3 Amp.
  - Springs - Phosphor Bronze, Nickel Silver Plate
  - Frame - Steel, Nickel Plate
  - Bushing - Brass
  - Positions - Three (As Shown)



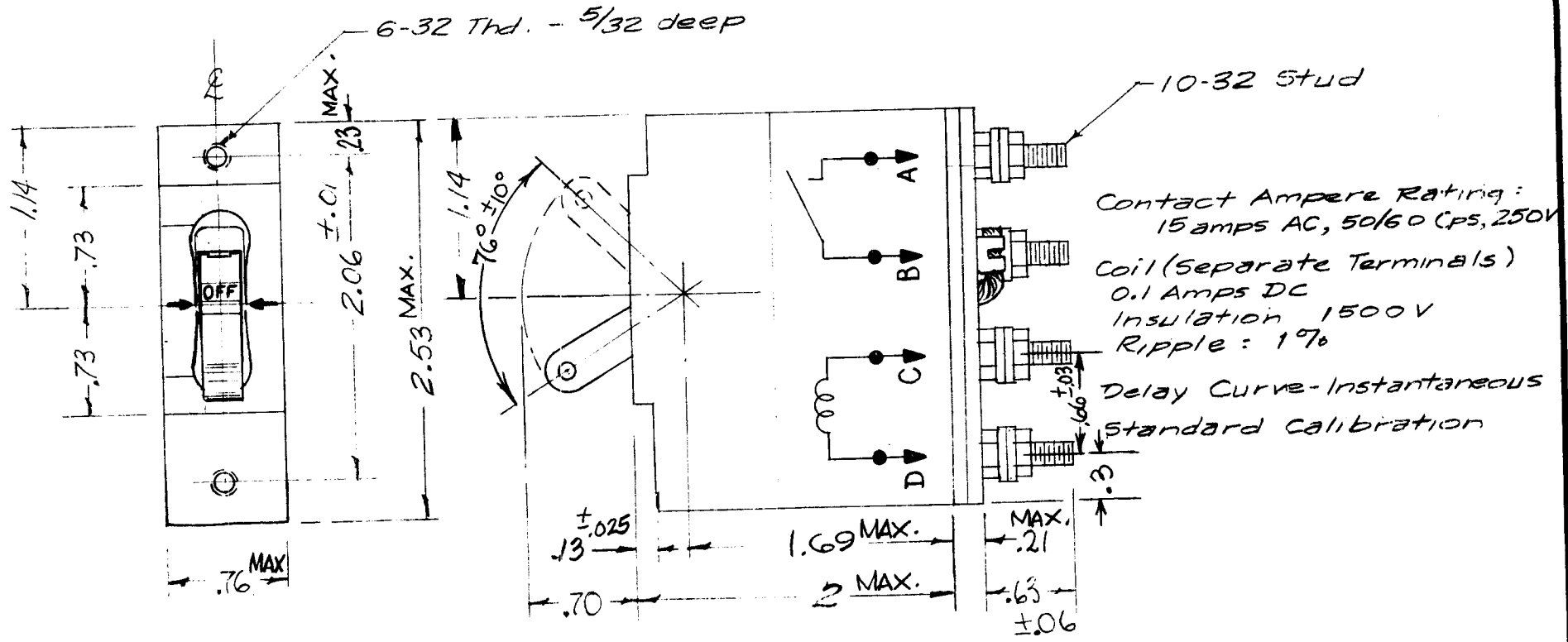
REF: MOSSMAN - No. 4403 Z1 (TMC)

REQ. ITEM						PART NO.		DESCRIPTION		SYMBOL
								THE TECHNICAL MATERIEL CORP.		
								MAMARONECK, NEW YORK		
								SWITCH, TURN		
								(3 Position, Non-Locking)		
								16 3/5/58		
								DRAWN		
								CHECKED		
								FINAL APPROVAL		
								SW-214		A
								ELEC. DES. APP.		
								MECH. DES. APP.		
								FINISH & SPEC. N .		

DEC. DIM. ±  
FRAC. DIM. ±  
ANGULAR DIM. ±

SCALE:  
MAXIMUM ALLOWABLE TOLERANCES HAVE BEEN DETERMINED AND ANY DEVIATIONS WILL BE CAUSE FOR REJECTION.  
REMOVE ALL BURRS AND SHARP EDGES

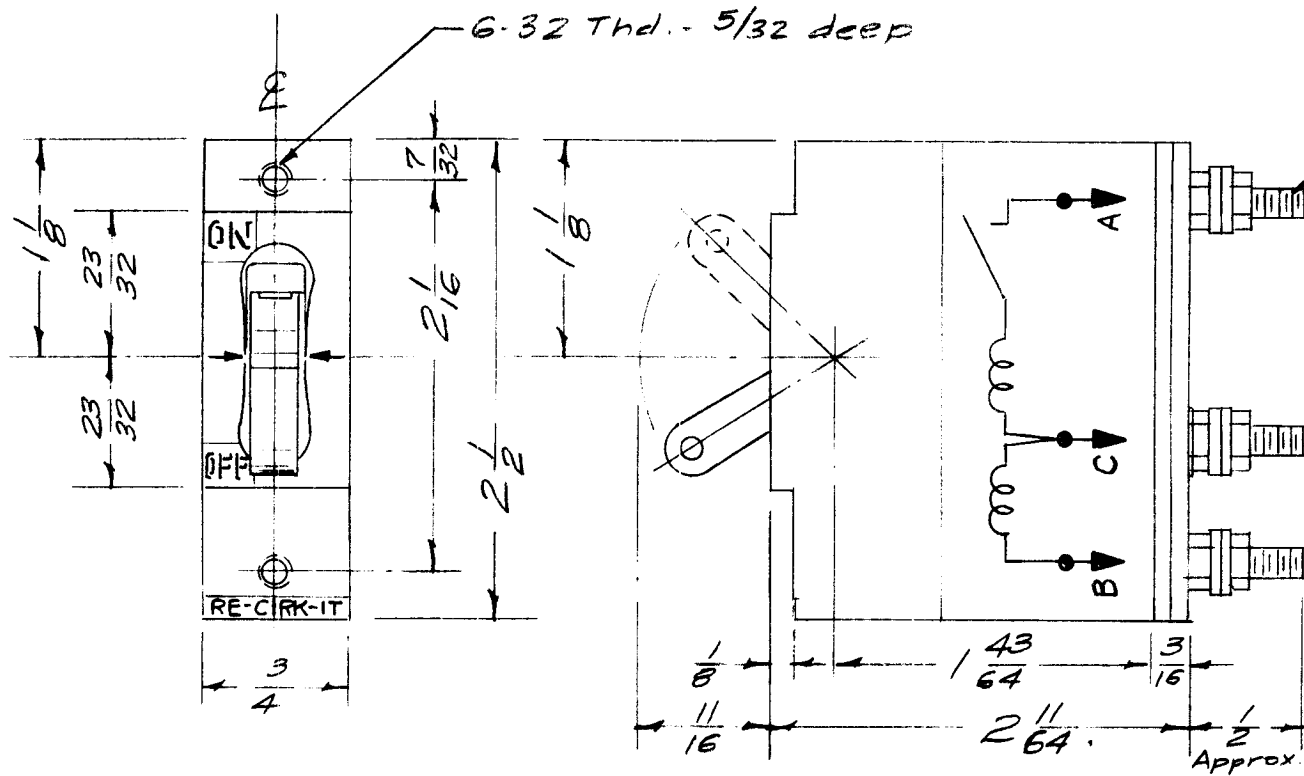
REQ. PER UNIT	USED ON			SW 215	D
	MODEL	S/N	DATE		
1	PSP-350		7-15-58		
1	RTP-2	CB6001	9-23-58		



S401-450 (APLB-DC-0.1A-D50)  
S401-58 (PAM12RSK MGC)

ISSUE	ITEM	CHANGED FROM	DATE	CH. NO.	DRAFTS	CHECKER	ENG. APP.	REQ. ITEM	PART NO.	DESCRIPTION	SYMBOL	
D		GEN'L REV. DIMS; ADD MER	7-20-67	18399	NLR	JFK	EFM			THE TECHNICAL MATERIEL CORP. MAMARONECK, NEW YORK CIRCUIT BREAKER		
C		DIM REVISED 'ON' & 'OFF' DEL.	6-20-66	16430	WFO	JCB	JC					
B	1	S401-58 NO WAS PAM12RSK	8-30-60	2875	CY	JCB						
A	1	ON SPEC. INSULATION VOLTAGE WAS 2500V	12/1/58	495	ANC	JFK						
TOLERANCES			SCALE:									
DEC. DIM. ±.015			MAXIMUM ALLOWABLE TOLERANCES HAVE BEEN DETERMINED AND ANY DEVIATIONS WILL BE CAUSE FOR REJECTION.									
FRAC. DIM. ± 1/64			REMOVE ALL BURRS AND SHARP EDGES									
ANGULAR DIM. ± 1/2°												
								TYPE & TEMPER	HEAT TREAT. SPEC.	DRAWN	CHECKED	FINAL APPROVAL
								16/15/58	JFK	AJJ		
								FINISH & SPEC. NO.	ELEC. DES. APP.	MECH. DES. APP.	SW 215	D

REQ. PER UNIT	USED ON			SW-216	E
	MODEL	ASS'Y. NO.	DATE		
1	PSP. 350		7-15-58		



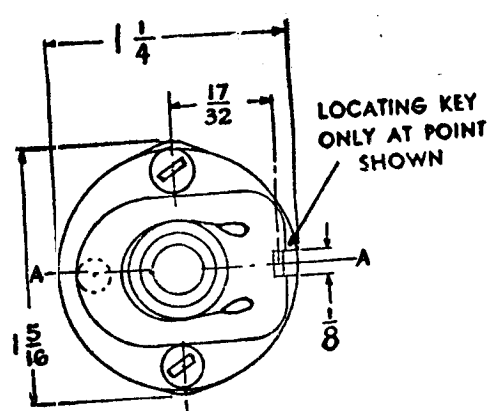
Overload:  
 5 amp at 230V  
 10 amp at 115V  
 MAX. OPER. VOLT.:  
 230V 50/60 CPS  
 DELAY CURVE 5  
 Standard Calibration.

REF - HEINEMANN NO. AM12DRK

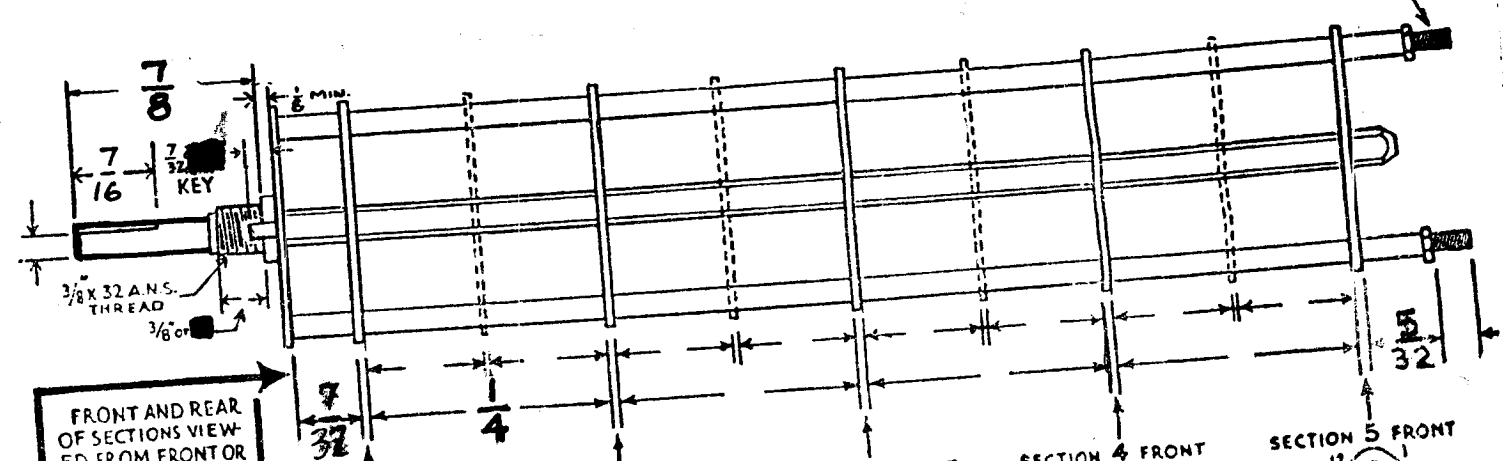
REQ. ITEM	PART NO.	DESCRIPTION	SYMBOL										
		<b>THE TECHNICAL MATERIEL CORP.</b> MAMARONECK, NEW YORK											
STOCK SIZE		CIRCUIT BREAKER											
MATERIAL													
TOLERANCES		SCALE:											
DEC. DIM. ±		MAXIMUM ALLOWABLE TOLERANCES HAVE BEEN DETERMINED AND ANY DEVIATIONS WILL BE CAUSE FOR REJECTION.											
FRAC. DIM. ±		REMOVE ALL BURRS AND SHARP EDGES											
ANGULAR DIM. ±													
ISSUE	ITEM	CHANGED FROM	DATE	CH. NO.	DRAFTS	CHECKER	ENG. APP.	TYPE & TEMPER	HEAT TREAT. SPEC.	DRAWN	CHECKED	FINAL APPROVAL	
E	1	"C" Term. WAS "B" "B" WAS "C" (ERROR)	7/30/58	4/3	16	WJP	ATT						
D	1	Redrawn - NO Change Pic. Added	7/15/58	4	16	WJP	ATT						
								16	7/15/58	file		A J J	
								FINISH & SPEC. NO.		ELEC. DES. APP.	MECH. DES. APP.	SW-216	E

CUSTOMER'S PART NO. SW-217

CUSTOMER

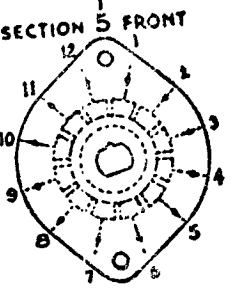
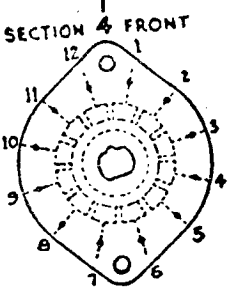
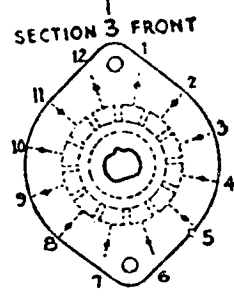
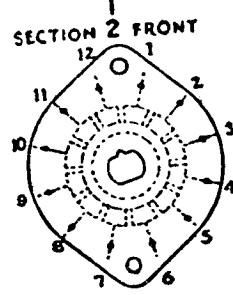
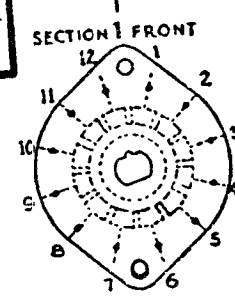


SHOW CUT AWAY PORTION OF FLAT IN BLACK AND GIVE ANGLE TO LINE A-A.  $\pm 3^\circ$  STANDARD RMA KNURLED AND SLOTTED SHAFT ALSO AVAILABLE

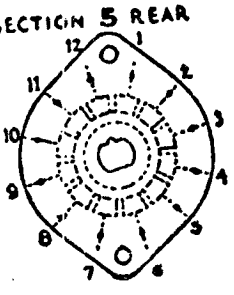
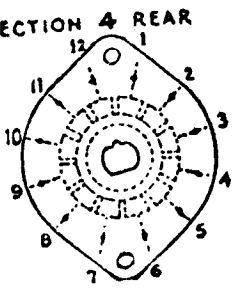
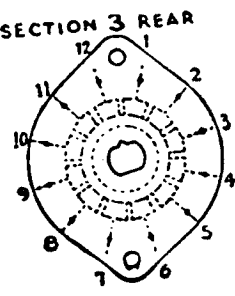
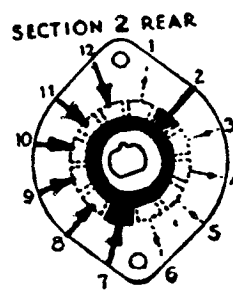
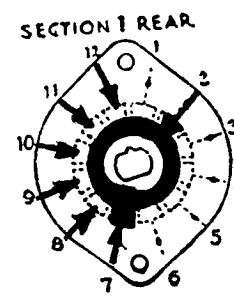
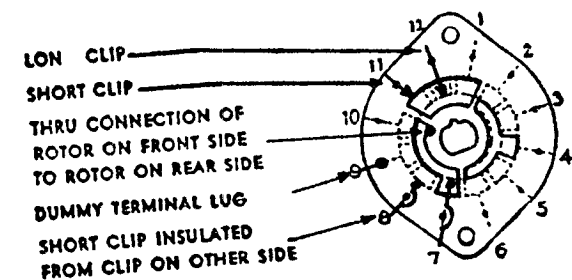


FRONT AND REAR OF SECTIONS VIEWED FROM FRONT OR KNOB END OF SWITCH IN EXTREME COUNTER-CLOCKWISE POSITION

NUMBER OF SECTIONS  $\frac{2}{6}$   
 NUMBER OF POSITIONS  $\frac{2}{6}$   
 ANGLE OF THROW  $30^\circ$  ( $30^\circ$ )



SYMBOLS USED IN MARKING PRINT



OUTLINE ROTOR BLADES AS SHOWN ABOVE WITH SWITCH IN EXTREME COUNTER-CLOCKWISE POSITION

CUSTOMER NOTES

USED ON PAL-350  
 THE TECHNICAL MATERIEL CORPORATION

SWITCH, ROTARY, METE

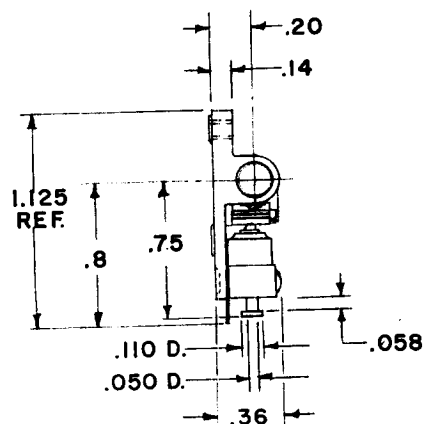
DRAWN 16 9/16/58	APP'D.
CHK'D JAL	ASJ
	SW-217

**SPECIFICATIONS**  
 SHORTING TYPE CONTACTS  NON-SHORTING  IF NOT SPECIFIED SHORTING TYPE WILL BE SUPPLIED.  
 INSULATION:  $\frac{1}{16}$  BAKELITE  $\frac{3}{8}$  MYCALEX  SPECIFY IMPREGNATION IF REQUIRED.  
 FINISH REQUIREMENTS: MILITARY  ARMY  NAVY ; SALT TEST (IF ANY GIVE DETAILS) 200 HR  
 CONTACTS AND ROTORS: SILVER PLATED BRASS  SOLID SILVER ALLOY ; IF NOT SPECIFIED SILVER PLATED BRASS WILL BE SUPPLIED.  
 MOUNTING HARDWARE: SUPPLY 1  $\frac{3}{8}$ " - 32 NUTS  $\frac{1}{2}$ " ACROSS FLATS; MATERIAL STAINLESS STEEL PLATING  
 1  $\frac{3}{8}$ " INTERNAL TOOTH LOCKWASHER; MATERIAL STAIN PLATIN STEEL  
 STAMP PART NUMBER SW-217-C ON FRONT PLATE YES  NO

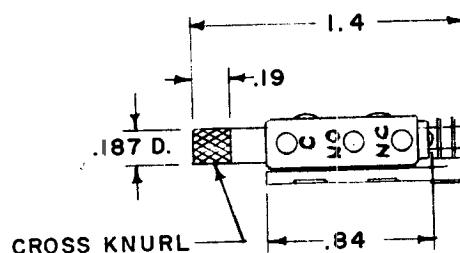
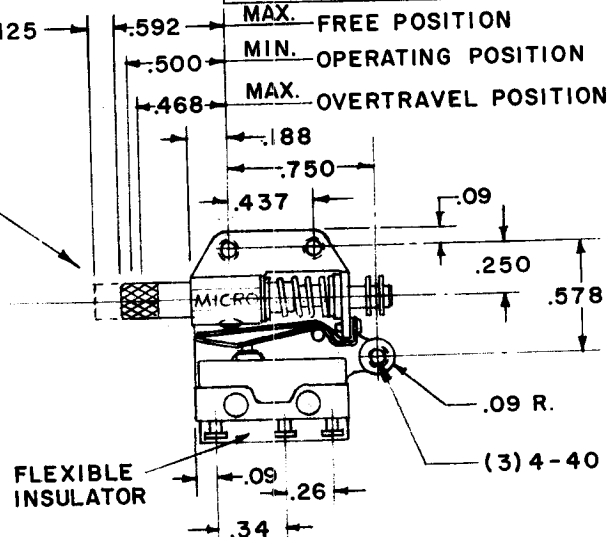


PUSH TO OPERATE - RETURNS AUTOMATICALLY TO POSITION SHOWN.

PULL TO OPERATE - REMAINS IN OPERATE POSITION UNTIL RESET FOR AUTOMATIC RETURN NEXT FULL STROKE "PUSH" OPERATION.



APPROX .125



REQ. PER UNIT	USED ON			SW-219
	MODEL	ASS'Y. NO.	DATE	
2	RFA-1		7-16-58	
2	PSP-350		7-16-58	

MAX. FREE POSITION  
MIN. OPERATING POSITION  
MAX. OVERTRAVEL POSITION

TOTAL TRAVEL  
PUSH OPERATION - APPROX. .156  
PULL OPERATION - APPROX. .156  
CONTACT ARRANGEMENT - SPDT  
BREAK DISTANCE - .010 MIN.  
250VAC 5 AMPS  
30 V. DC RATING (SEA LEVEL)  
INDUCTIVE 5 AMPS  
RESISTIVE 4 AMPS  
MAXIMUM INRUSH 15 AMPS

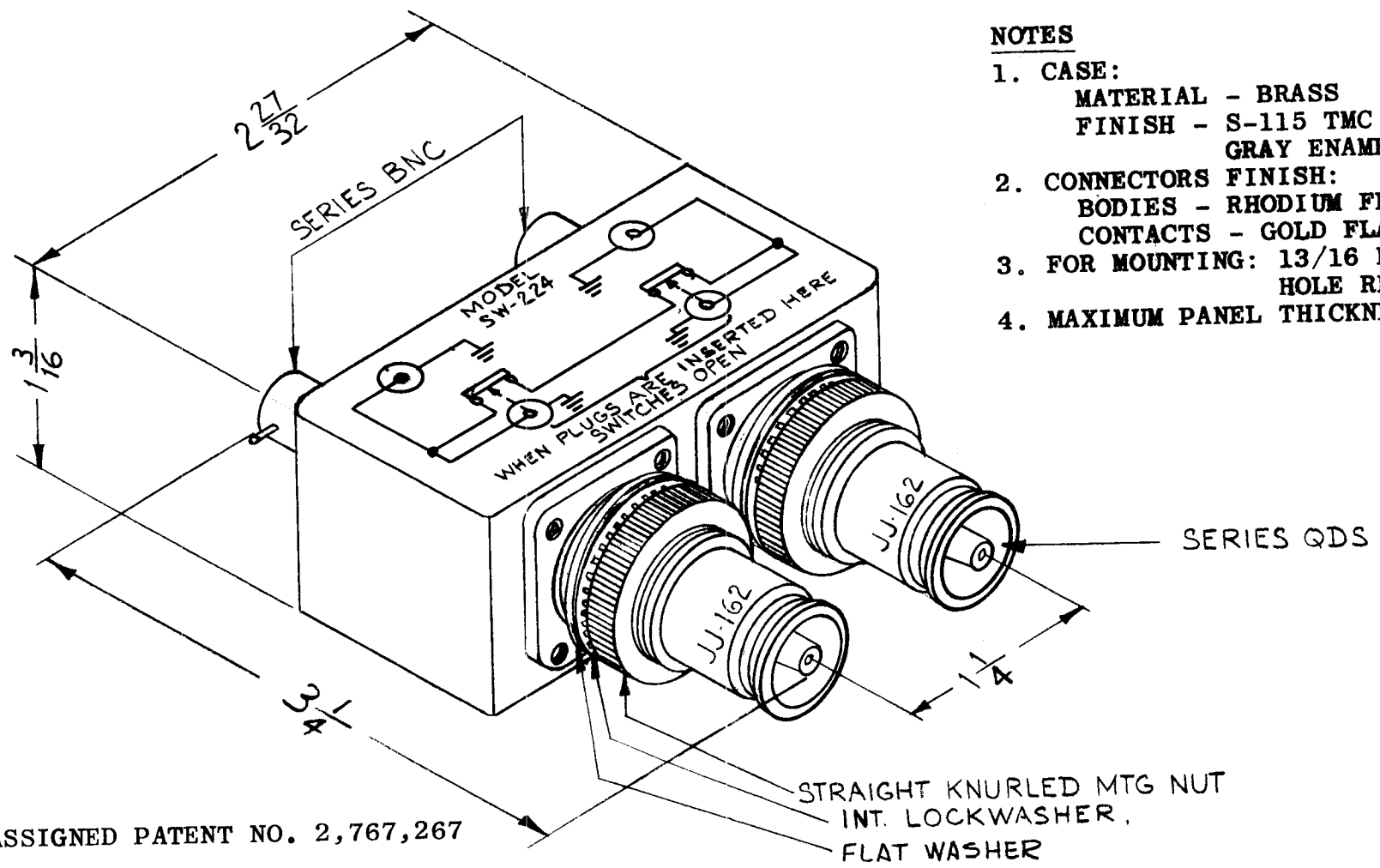
TOLERANCES  
ONE PLACE (.0) ±.030  
TWO PLACES (.00) ±.015  
THREE PLACES (.000) ±.005

Ref. MICROSWITCH NO. YACI-7

								REQ. ITEM	PART NO.	DESCRIPTION	SYMBOL		
								THE TECHNICAL MATERIEL CORP. MAMARONECK, NEW YORK					
								SWITCH, INERLOCK					
								MATERIAL					
ISSUE	ITEM	CHANGED FROM	DATE	CH. NO.	DRAFTS	CHECKER	ENG. APP.			167/16/58	A.S.S.		
TOLERANCES			SCALE: FULL							DRAWN	CHECKED	FINAL APPROVAL	
DEC. DIM. ± See Above			MAXIMUM ALLOWABLE TOLERANCES HAVE BEEN DETERMINED AND ANY DEVIATIONS WILL BE CAUSE FOR REJECTION. REMOVE ALL BURRS AND SHARP EDGES					TYPE & TEMPER		HEAT TREAT. SPEC.	SW-219		
FRAC. DIM. ±								FINISH & SPEC. NO.		ELEC. DES. APP.	MECH. DES. APP.		
ANGULAR DIM. ±													



RE. PER UNIT	USED ON			SW-224	B
	MODEL	ASS'Y. NO.	DATE		
	11 SPP-4		4-14-61		
10 SPP-8		4-14-61			



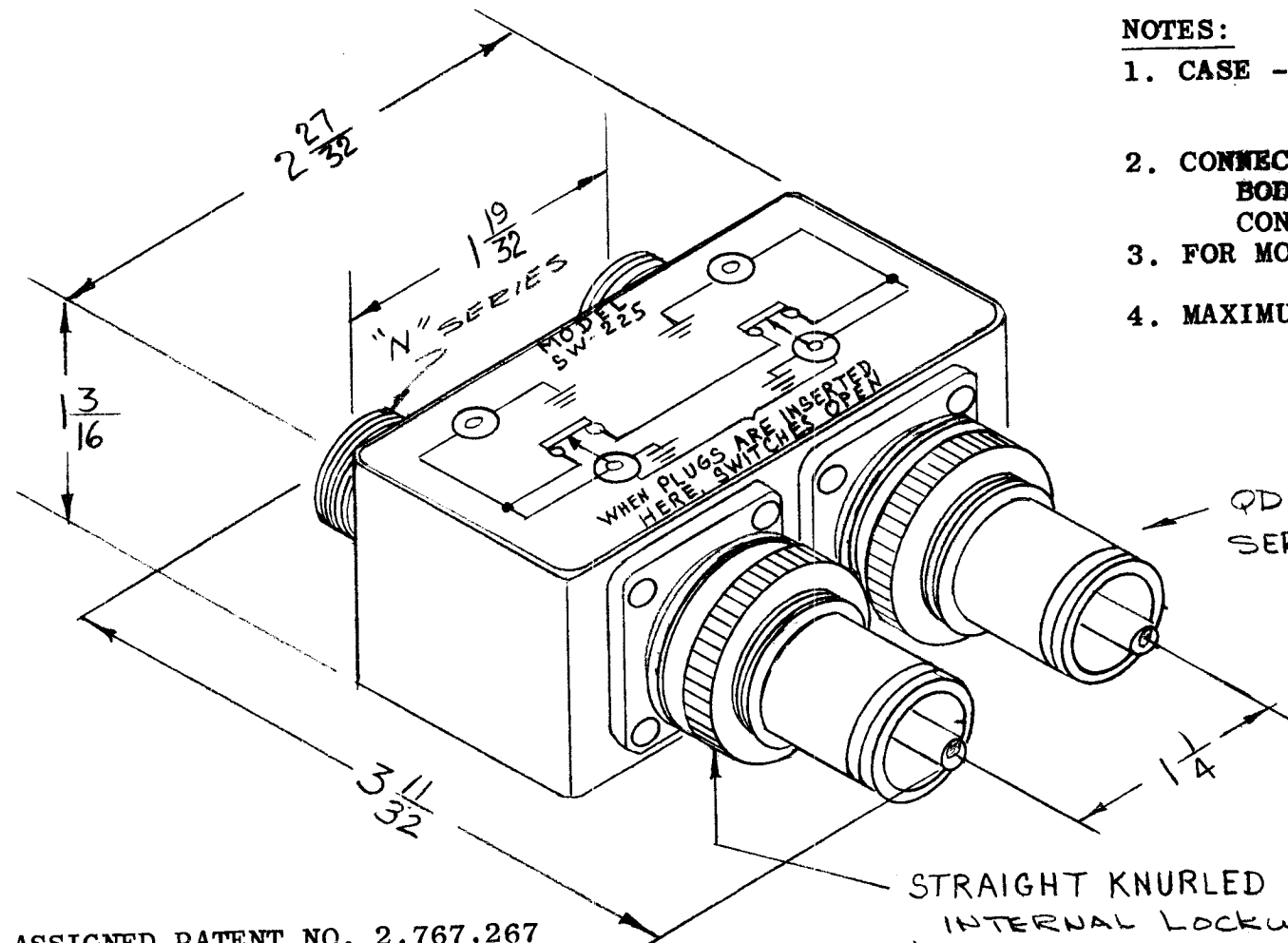
**NOTES**

1. CASE:  
MATERIAL - BRASS  
FINISH - S-115 TMC SMOOTH GRAY ENAMEL
2. CONNECTORS FINISH:  
BODIES - RHODIUM FLASH  
CONTACTS - GOLD FLASH
3. FOR MOUNTING: 13/16 DIAMETER HOLE REQUIRED
4. MAXIMUM PANEL THICKNESS - 3/16

NOTE: ASSIGNED PATENT NO. 2,767,267

							REQ.	ITEM	PART NO.	DESCRIPTION			SYMBOL	
							—		THE TECHNICAL MATERIEL CORP.					
							—		MAMARONECK, NEW YORK					
							—		SWITCH, R.F.					
							—		DUAL BNC TO DUAL QDS.					
B	PATENT NOTE ADDED		2/30/65	14846	A.V.V.	JOB								
A	2	PICTORIAL CLARIFIED	2-28-63	83B										
	1	NOTES ADDED												
ISSUE	ITEM	CHANGED FROM	DATE	CH. NO.	DRAFTS	CHECKER	ENG. APP.							
TOLERANCES			SCALE: DO NOT SCALE (2A-2087)											
DEC. DIM. ±			MAXIMUM ALLOWABLE TOLERANCES HAVE BEEN DETERMINED AND ANY DEVIATIONS WILL BE CAUSE FOR REJECTION. REMOVE ALL BURRS AND SHARP EDGES				TYPE & TEMPER	HEAT TREAT. SPEC.	DRAWN	CHECKED	FINAL APPROVAL			
FRAC. DIM. ±														
ANGULAR DIM. ±														
							FINISH & SPEC. NO.		ELEC. DES. APP.	MECH. DES. APP.	SW-224	B		

REQ. PER UNIT 11	USED ON			SW-225	C
	MODEL SPP-5	ASS'Y. NO.	DATE 3-25-60		



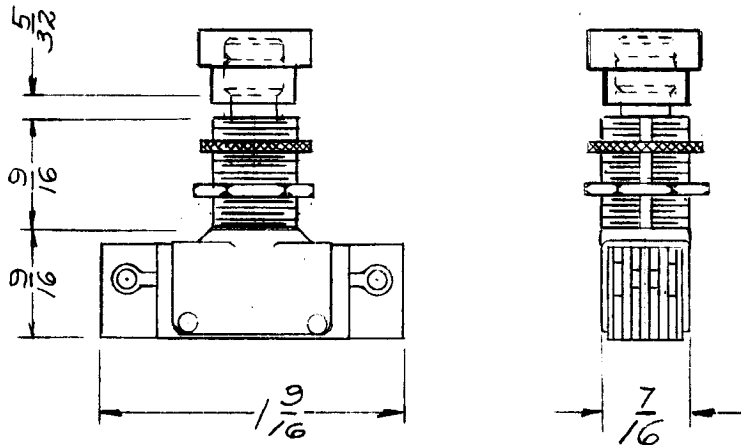
**NOTES:**

1. CASE - MATERIAL - BRASS  
FINISH - S-115 TMC  
SMOOTH GRAY ENAMEL
2. CONNECTORS FINISH -  
BODIES - RHODIUM FINISH  
CONTACTS - GOLD FLASH
3. FOR MOUNTING - 13/16 DIAMETER  
HOLES REQUIRED
4. MAXIMUM PANEL THICKNESS - 3/16

NOTE: ASSIGNED PATENT NO. 2,767,267

ISSUE	ITEM	CHANGED FROM	DATE	CH. NO.	DRAFTS	CHECKER	ENG. APP.	REQ.	ITEM	PART NO.	DESCRIPTION	SYMB L					
C	1	3 11/32 WAS 3 1/4, 1/64 ADD	11-24-65	15139	2 XV	JCD	[Signature]				THE TECHNICAL MATERIEL CORP. MAMARONECK, NEW YORK						
B		PATENT NOTE ADDED	9/30/65	14846	PV	[Signature]	[Signature]				SWITCH, R.F.						
A	2	NOTES ADDED	2-28-63	8228	[Signature]	[Signature]	[Signature]				DUAL TYPE "N" TO DUAL QDS						
A	1	PICTORIAL CLARIFIED															
TOLERANCES			SCALE: 2A-1855					TYPE & TEMPER		HEAT TREAT. SPEC.		DRAWN		CHECKED		FINAL APPROVAL	
DEC. DIM. ± FRAC. DIM. ± 1/64 ANGULAR DIM. ±			MAXIMUM ALLOWABLE TOLERANCES HAVE BEEN DETERMINED AND ANY DEVIATIONS WILL BE CAUSE FOR REJECTION. REMOVE ALL BURRS AND SHARP EDGES					FINISH & SPEC. NO.		ELEC. DES. APP		MECH. DES. APP		SW-225		C	

RE. PER UNIT	USED ON			SW-227	A
	MODEL	ASSY. NO.	DATE		
1	ATS-MCU-2	SW-227-R	6-8-59		



MECHANICAL DESCRIPTION

MOMENTARY PUSH SWITCH  
 SLOW MAKE & BREAK CANOPY SIZE  
 SNAP-ON BUTTON (SEE CHART)  
 SOLDER LUG TERMINALS  
 ONE HEX. NUT } 15/32" - 32 THREAD  
 ONE KNURLED NUT }

ELECTRICAL DESCRIPTION

2 CIRCUIT N.O. & N.C.  
 RATING - 1 AMP. 125 VOLT A.C.  
 MODEL 3392 AE

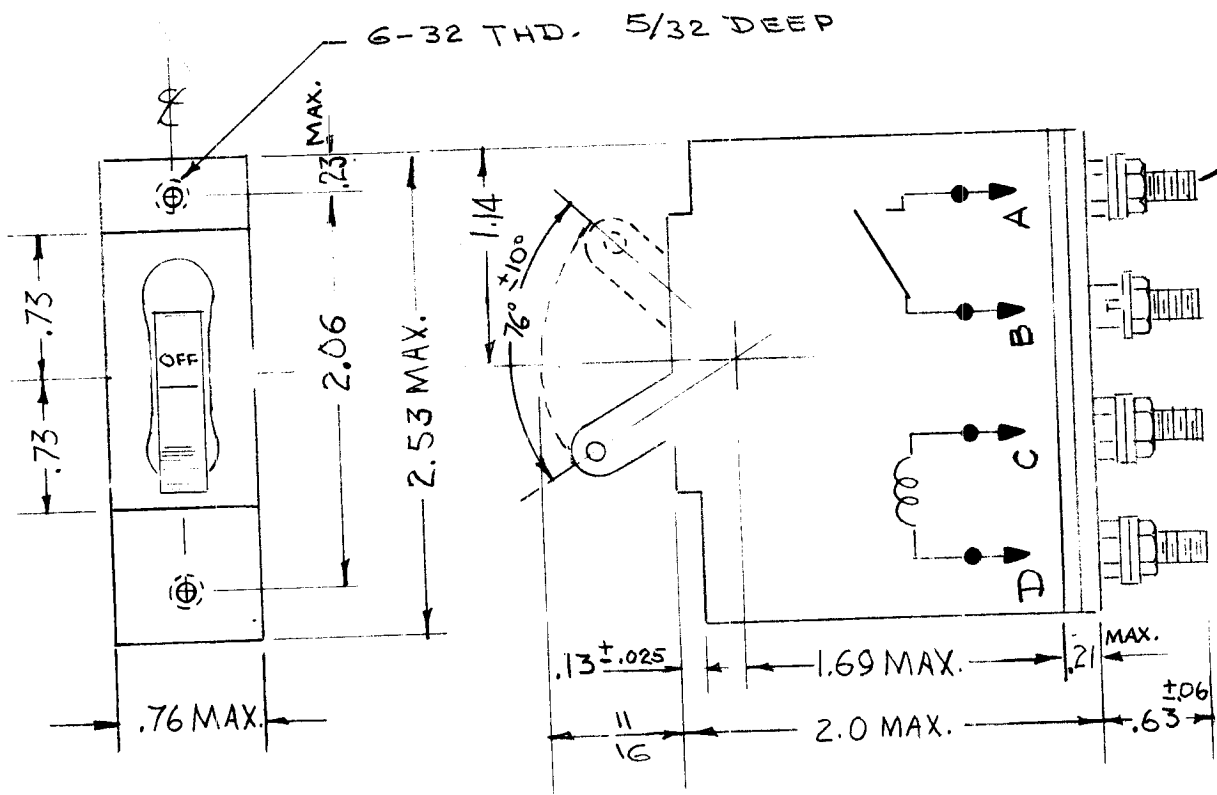
TMC PART NO.	BUTTON COLOR
SW-227-R	RED BUTTON
SW-227-B	BLACK BUTTON

REQ.	ITEM	PART NO.	DESCRIPTION	SYMBOL
			<b>THE TECHNICAL MATERIEL CORP.</b> MAMARONECK. NEW YORK	
			SWITCH, PUSH BUTTON	
			MOMENTARY CONTACT	
			MATERIAL	
			9/16/58 AWC HJD JLR	
			DRAWN CHECKED FINAL APPROVAL	
			SW-227 A	
			FINISH & SPEC. NO. ELEC. DES. APP. MECH. DES. APP.	

A	2	CHART ADDED	5/17/60	2274	CW	JCB	5/17/60
ISSUE	ITEM	CHANGED FROM	DATE	CH. NO.	DRAFTS	CHECKER	ENG. APP.
	1	SW-227-R WAS SW227					
TOLERANCES			SCALE: 5401-38 (# 3392)				
DEC. DIM. ±			MAXIMUM ALLOWABLE TOLERANCES HAVE BEEN DETERMINED AND ANY DEVIATIONS WILL BE CAUSE FOR REJECTION.				
FRAC. DIM. ±			REMOVE ALL BURRS AND SHARP EDGES				
ANGULAR DIM. ±							

REQ. PER UNIT	USED ON			SW 229	B
	MODEL	SYMBOL NO.	DATE		
1	RTP-2	CB6000	9-23-58		



10-32 STUDS

CONTACT AMPERE RATING:  
15 AMPS AC, 50/60 CPS, 250V  
COIL (SEPARATE TERMINALS)  
0.01 AMPS DC  
INSULATION: 1500 V  
RIPPLE: 1%

DELAY CURVE - INSTANTANEOUS  
STANDARD CALIBRATION

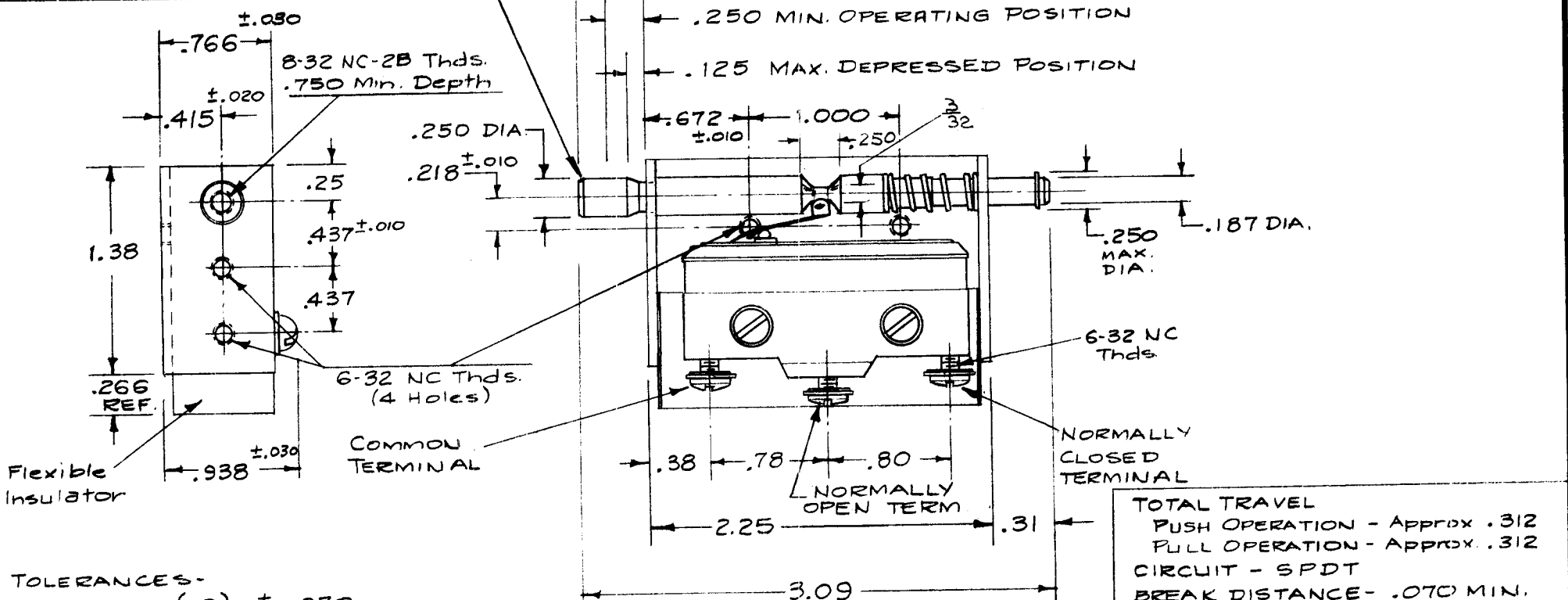
S401-450 (APL 5-DC-0.01A-D50)  
S401-58 (PAM 12 RSKMG6)

ISSUE	ITEM	CHANGED FROM	DATE	CH. NO.	DRAFTS	CHECKER	ENG. APP.	REQ. ITEM	PART NO.	DESCRIPTION	SYMBOL			
B		COMPLETELY REVISED	9-11-67	18399	H.G.	<i>[Signature]</i>	EFM			THE TECHNICAL MATERIEL CORP. MAMARONECK, NEW YORK	CIRCUIT BREAKER			
A	1	S401-58 NO. WAS PAM12 RSK	8-30-60	2875	Cy	<i>[Signature]</i>	<i>[Signature]</i>							
TOLERANCES			SCALE:											
DEC. DIM. ±			MAXIMUM ALLOWABLE TOLERANCES HAVE BEEN DETERMINED AND ANY DEVIATIONS WILL BE CAUSE FOR REJECTION.											
FRAC. DIM. ±			REMOVE ALL BURRS AND SHARP EDGES											
ANGULAR DIM. ±			TYPE & TEMPER			HEAT TREAT. SPEC.			DRAWN		CHECKED		FINAL APPROVAL	
			FINISH & SPEC. NO.			ELEC. DES. APP.		MECH. DES. APP.		SW 229 B				

Push to Operate - Returns Automatically to Position Shown.  
 Pull to Operate - Remains in Operate Position until Reset for Automatic Return by next full Stroke "PUSH" Oper.

REQ. PER UNIT	USED ON		
	MODEL	ASSY. NO.	DATE
4	CAB-7		10-3-58

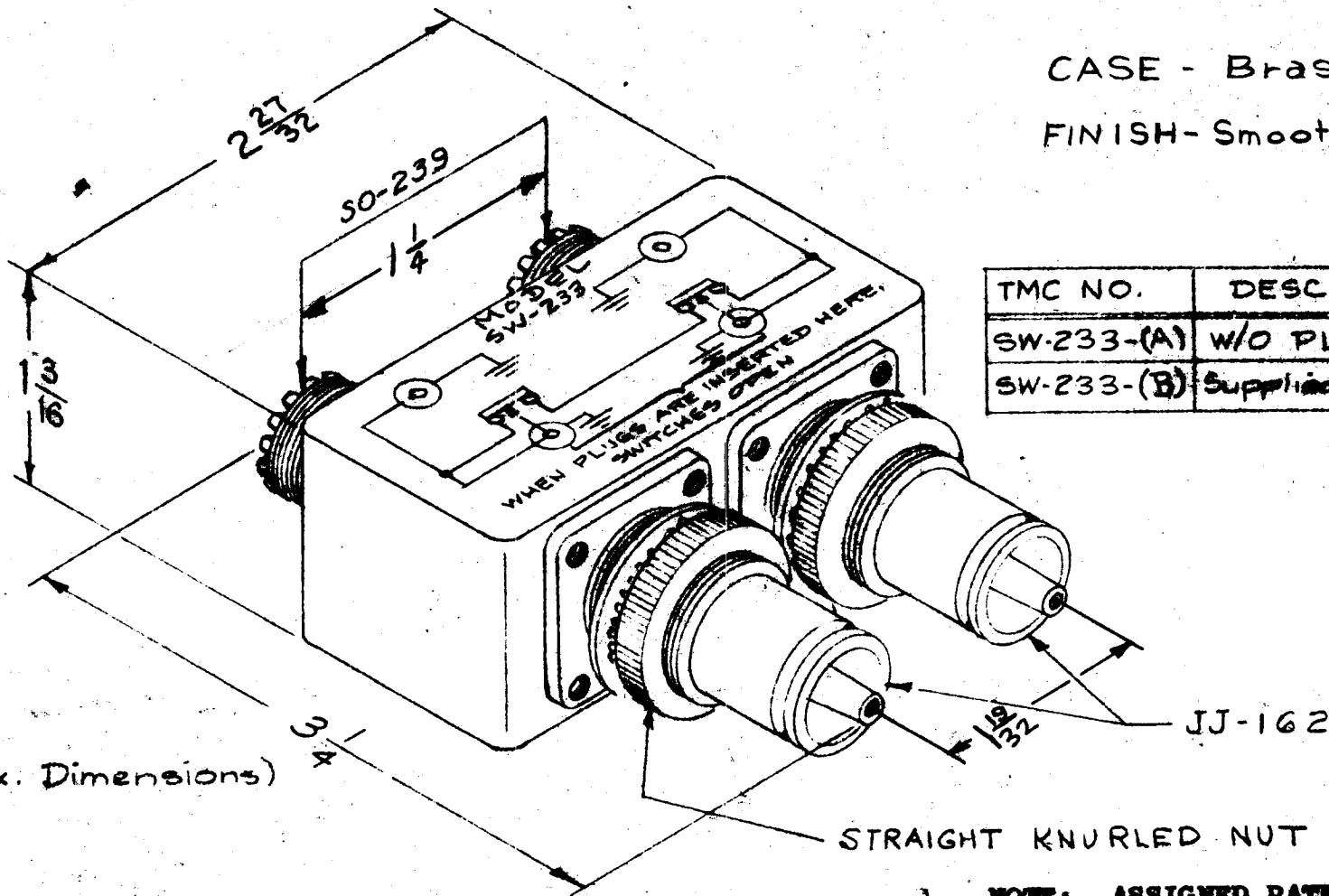
SW-230



TOLERANCES -  
 ONE PLACE (.0) ± .030  
 TWO PLACES (.00) ± .015  
 THREE PLACES (.000) ± .005

REF - MICRO SWITCH NO. 1A21

ISSUE	ITEM	CHANGED FROM	DATE	CH. NO.	DRAFTS	CHECKER	ENG. APP.	REQ. ITEM	PART NO.	DESCRIPTION	SYMBOL	
										<b>THE TECHNICAL MATERIEL CORP.</b> MAMARONECK, NEW YORK SWITCH, INTERLOCK		
TOLERANCES								SCALE:				
DEC. DIM. ± See Above								MAXIMUM ALLOWABLE TOLERANCES HAVE BEEN DETERMINED AND ANY DEVIATIONS WILL BE CAUSE FOR REJECTION.				
FRAC. DIM. ±								REMOVE ALL BURRS AND SHARP EDGES				
ANGULAR DIM. ±												
								TYPE & TEMPER	HEAT TREAT. SPEC.	DRAWN	CHECKED	FINAL APPROVAL
								FINISH & SPEC. NO.		ELEC. DES. APP.	MECH. DES. APP.	
												SW-230



CASE - Brass

FINISH - Smooth Grey Enamel

TMC NO.	DESCRIPTION
SW-233-(A)	W/O PL-149
SW-233-(B)	Supplied w/two PL-149

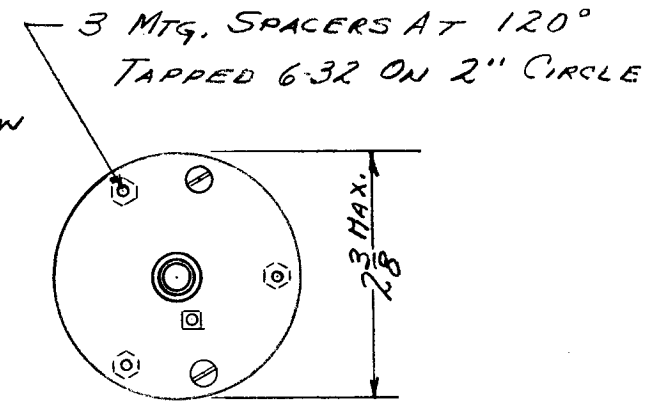
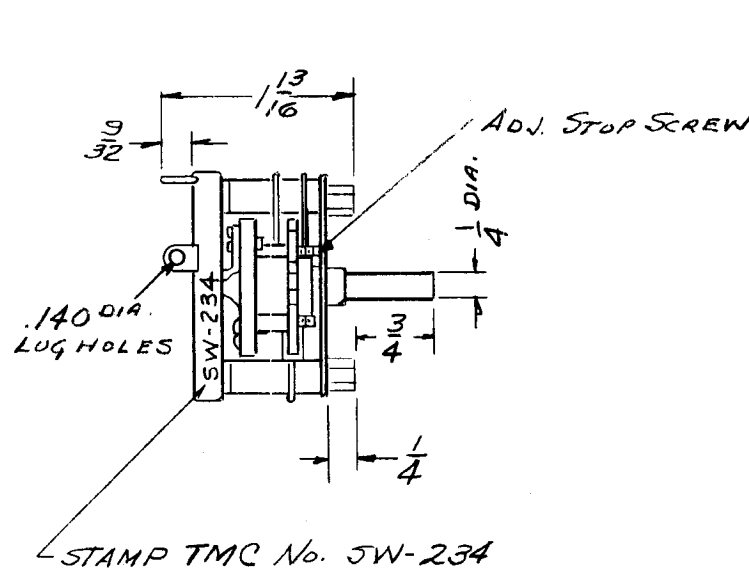
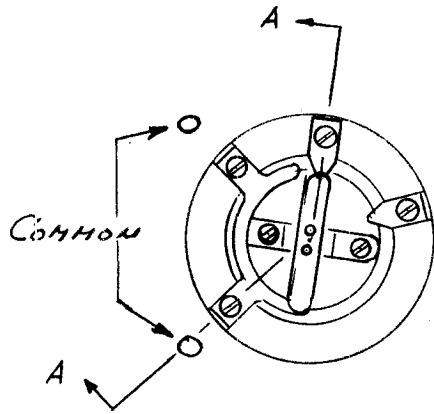
(Approx. Dimensions)

STRAIGHT KNURLED NUT

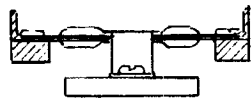
NOTE: ASSIGNED PATENT NO. 2,767,267

REQ. ITEM	PART NO.	DESCRIPTION	SYMBOL									
		THE TECHNICAL MATERIAL CORP. MAMARONECK. NEW YORK										
		STOCK SIZE										
		SWITCH, R.F.										
		QDS TO UHF										
A	PATENT NOTE ADDED	9/30/65 14846	JOB MM									
ISSUE ITEM	CHANGED FROM	DATE	CH. NO.	DRAFTS	CHECKER	ENG. APP.	MJT	10/13/68	10/13/68	10/13/68		
TOLERANCES		MAXIMUM ALLOWABLE TOLERANCES HAVE BEEN DETERMINED AND ANY DEVIATIONS WILL BE CAUSE FOR REJECTION.		REMOVE ALL BURRS AND SHARP EDGES		TYPE & TEMPER		HEAT TREAT. SPEC.	DRAWN		CHECKED	FINAL APPROVAL
											SW-233 A	

REQ. PER UNIT	USED ON			SW-234
	MODEL	SYM. NO.	DATE	
1	RTF-2	P/A	10-21-1958	



ONE POLE TWO POSITION  
NON-SHORTING.  
DETENT - 60°  
MIN. FLASHOVER AT 60CPS - 4500V. PEAK  
CURRENT CARRYING CAPACITY - 25A. MAX.



SECTION A-A

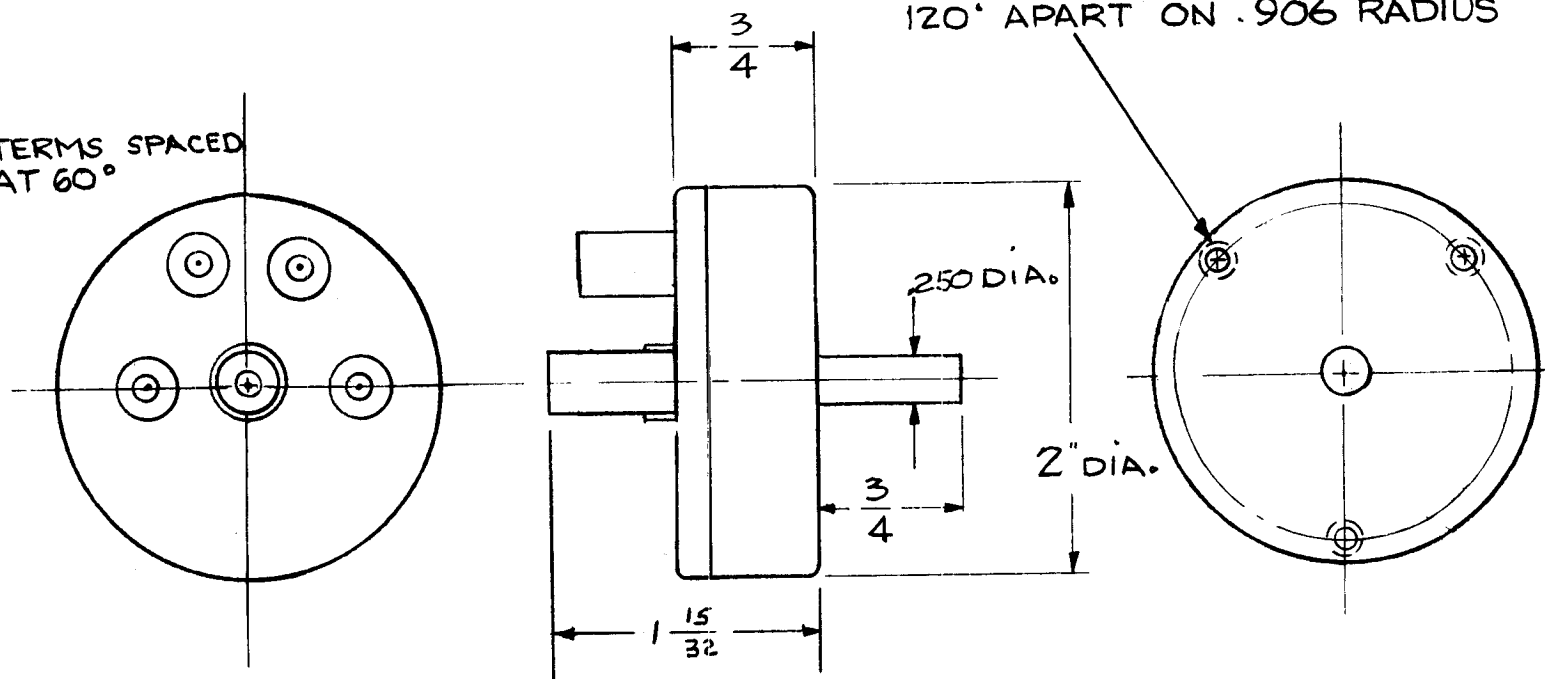
REF.: COMMUNICATIONS PRODUCTS B. INC. MODEL 65

ISSUE	ITEM	CHANGED FROM	DATE	CH. NO.	DRAFTS	CHECKER	ENG. APP.	REQ. ITEM	PART NO.	DESCRIPTION	SYMBOL				
										<b>THE TECHNICAL MATERIEL CORP.</b> MAMARONECK, NEW YORK <b>SWITCH, ROTARY, ANTENNA</b> LOADING					
TOLERANCES			SCALE: <i>CR</i>												
DEC. DIM. ±			MAXIMUM ALLOWABLE TOLERANCES HAVE BEEN DETERMINED AND ANY DEVIATIONS WILL BE CAUSE FOR REJECTION. REMOVE ALL BURRS AND SHARP EDGES												
FRAC. DIM. ±															
ANGULAR DIM. ±															
								TYPE & TEMPER	HEAT TREAT. SPEC.	DRAWN	CHECKED	FINAL APPROVAL			
								FINISH & SPEC. NO.		ELEC. DES. APP.	MECH. DES. APP.	SW-234			

REQ. PER. UNIT	USED ON			SW 239
	MODEL	ASS'Y. NO.	DATE	
3	GPT 10K	MCP-1	5-11-59	

4 TERMS SPACED AT 60°

③ 6-32 NC-2B TAPPED MTG HOLES 120° APART ON .906 RADIUS



SPECIFICATIONS  
 BNC COAX PER MIL-C-3608  
 4 POSITIONS  
 1 SECTION  
 NON SHORTING  
 POWER-100 WATTS

TYPICAL AT 100 MC  
 50 Ω VSWR=1.04  
 CROSS TALK=-82 db

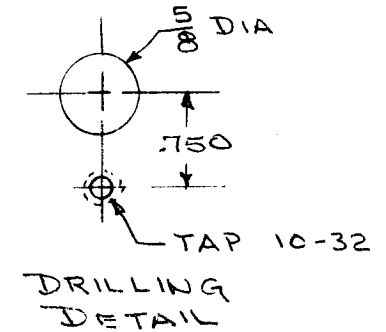
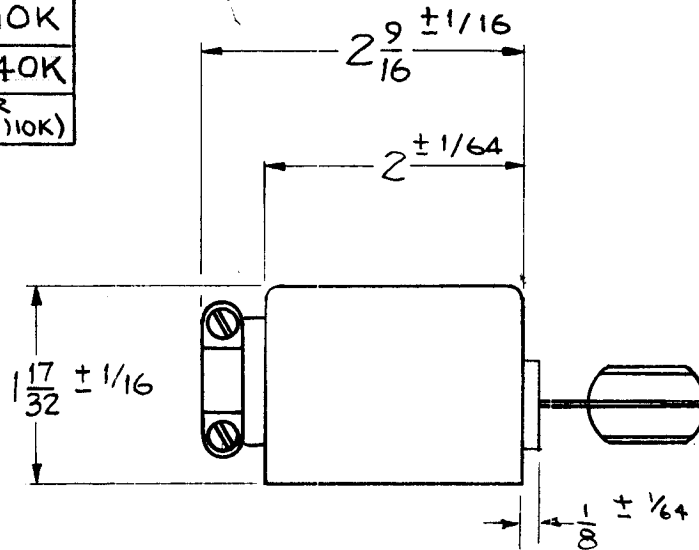
								REQ.	ITEM	PART NO.	DESCRIPTION	SYMBOL
										THE TECHNICAL MATERIEL CORP.		
										MAMARONECK, NEW YORK		
										SWITCH, ROTARY		
										COAXIAL		
A	COMPLETELY REVISED			5-14-68	14084	CJK	JL			J.C. BIELE	<i>[Signature]</i>	<i>[Signature]</i>
ISSUE	ITEM	CHANGED FROM	DATE	CH. NO.	DRAFTS	CHECKER	ENG. APP.					
TOLERANCES			SCALE: 5401-53 (322-0114310)									
DEC. DIM. ± .005			MAXIMUM ALLOWABLE TOLERANCES HAVE BEEN DETERMINED AND ANY DEVIATIONS WILL BE CAUSE FOR REJECTION. REMOVE ALL BURRS AND SHARP EDGES									
FRAC. DIM. ±												
ANGULAR DIM. ± 1/64												
								TYPE & TEMPER	HEATTREAT. SPEC.	DRAWN	CHECKED	FINAL APPROVAL
										<i>[Signature]</i>		
								FINISH & SPEC. NO.	ELEC. DES. APP	MECH. DES. APP	SW 239	



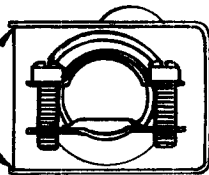
TMC PART NO	VANE NO	USED — ON
SW243-1	PO-168-6	GPT10K
SW243-2	PO-168-3	GPT40K
SW243-3	PO-168-4	(TST <sup>HYR</sup> (10K))

REQ. PER. UNIT	USED ON		
	MODEL	ASSY. NO.	DATE
1	GPT 10K	POW./SUP.	5-11-59

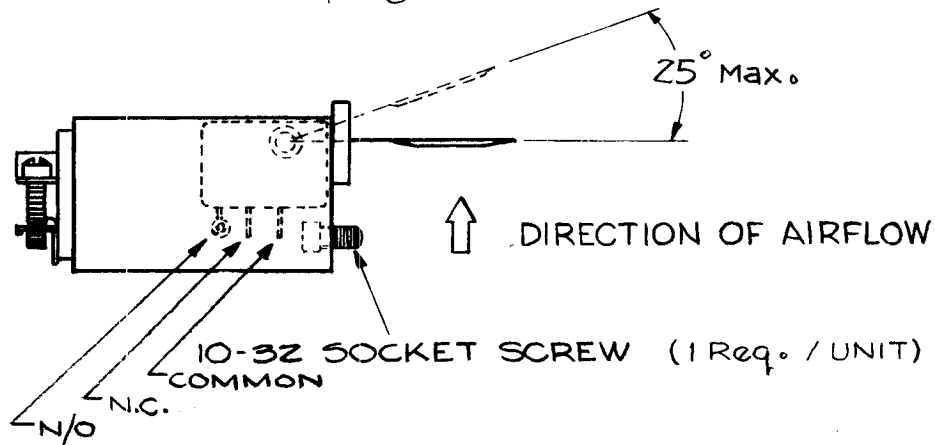
SW-243 D



PART TWO EDGES TO REMOVE COVER.



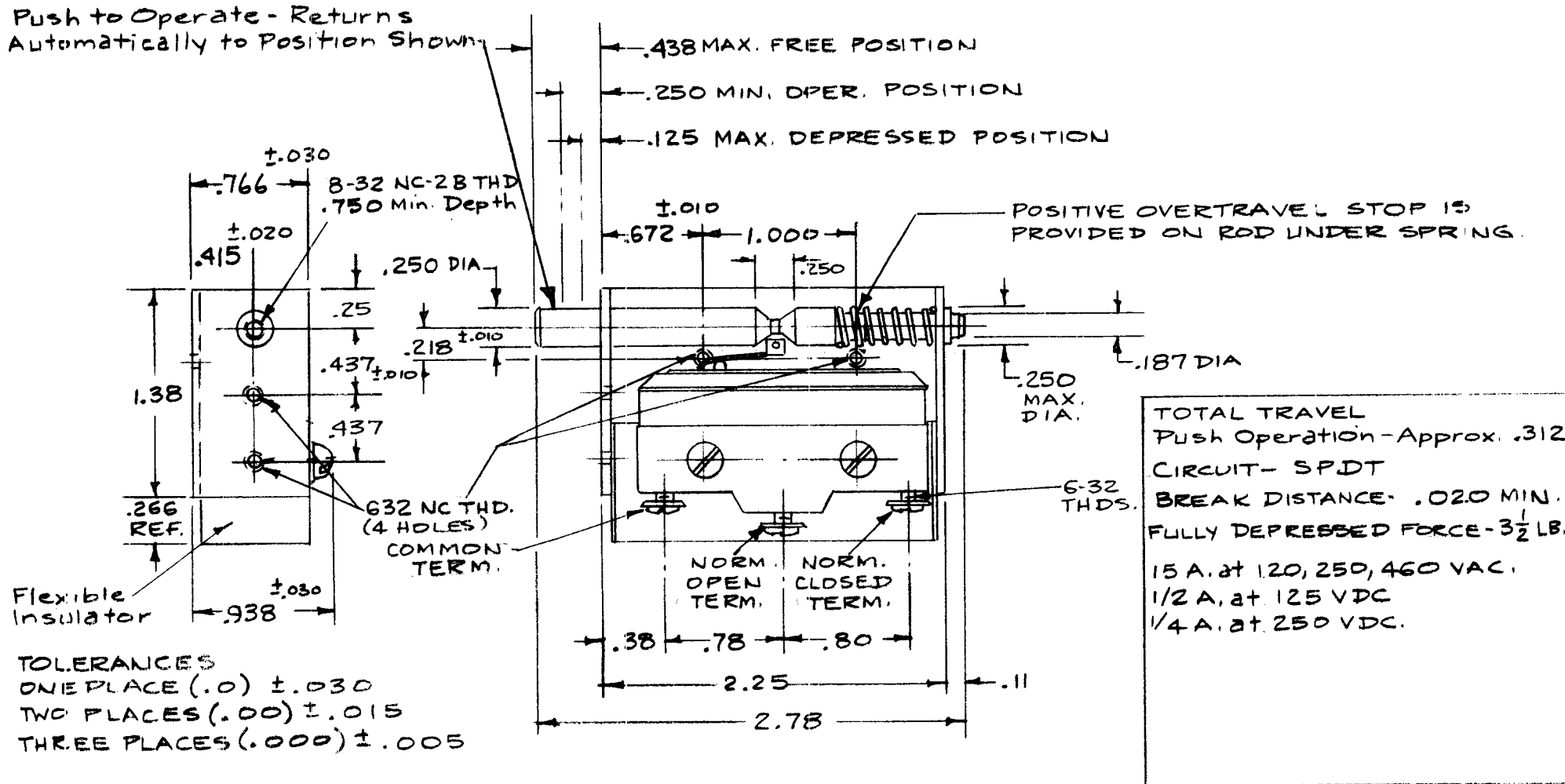
DIRECTION OF COVER REMOVAL.



ISSUE	ITEM	CHANGED FROM	DATE	CH. NO.	DRAFTS	CHECKER	ENG. APP.	REQ.	ITEM	PART NO.	DESCRIPTION	SYMBOL	
D	1	SW243-3 ADDED	10.22.64	12713	WJB	@	<i>[Signature]</i>				THE TECHNICAL MATERIEL CORP. MAMARONECK, NEW YORK SWITCH, AIRFLOW	D	
C	2	TMC PART NO. CHART ADD. VANE DIMS. DELETED	5.8.64	11382	WJB	@	<i>[Signature]</i>						
B	1	1/8 DIM. WAS 15/16	3-1-61	4228	M.H.F.	J.C.B.	<i>[Signature]</i>						
A	1	Added N/O, N.C. and COMMON TO LEADS	11-20-59	1577	J.C.M.	J.C.B.	<i>[Signature]</i>						
TOLERANCES			SCALE: 5401-19 (2A)										J.C. BIELE
DEC. DIM. ± FRAC. DIM. ± ANGULAR DIM. ±			MAXIMUM ALLOWABLE TOLERANCES HAVE BEEN DETERMINED AND ANY DEVIATIONS WILL BE CAUSE FOR REJECTION. REMOVE ALL BURRS AND SHARP EDGES						TYPE & TEMPER	HEAT TREAT. SPEC.	DRAWN	CHECKED	FINAL APPROVAL
									FINISH & SPEC. NO.	ELEC. DES. APP	MECH. DES. APP	SW-243	D

REQ. PER. UNIT	USED ON		
	MODEL	ASSY. NO.	DATE
			SW-244

Push to Operate - Returns Automatically to Position Shown



TOTAL TRAVEL Push Operation - Approx. .312  
 CIRCUIT - SPDT  
 BREAK DISTANCE - .020 MIN.  
 FULLY DEPRESSED FORCE - 3 1/2 LB.  
 15 A. at 120, 250, 460 VAC.  
 1/2 A. at 125 VDC  
 1/4 A. at 250 VDC.

REF-MICROSWITCH NO. X18596

REQ.	ITEM	PART NO.	DESCRIPTION			SYMBOL	
			THE TECHNICAL MATERIEL CORP.				
			MAMARONECK, NEW YORK				
			SWITCH, INTERLOCK				
MATERIAL							
STOCK SIZE							
ISSUE	ITEM	CHANGED FROM	DATE	CH. NO.	DRAFTS	CHECKER	ENG. APP.
TOLERANCES			SCALE: Full				
DEC. DIM. ± see Above			MAXIMUM ALLOWABLE TOLERANCES HAVE BEEN DETERMINED AND ANY DEVIATIONS WILL BE CAUSE FOR REJECTION. REMOVE ALL BURRS AND SHARP EDGES				
FRAC. DIM. ±							
ANGULAR DIM. ±							
TYPE & TEMPER		HEATTREAT. SPEC.	DRAWN	CHECKED	FINAL APPROVAL		
FINISH & SPEC. NO.		ELEC. DES. APP	MECH. DES. APP		SW-244		

CUSTOMERS PART NO. SW-250

CUSTOMER TECH. NAT. COMP.

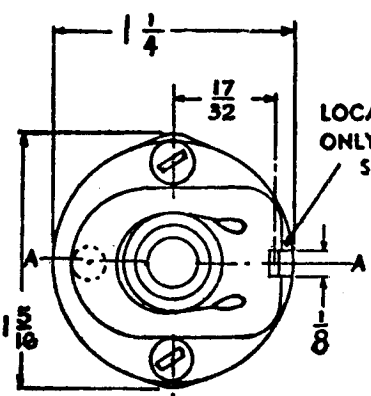
OAK MFG. CO.

1260 CLYBOURN AVE., CHICAGO 10, ILL.

SW-250

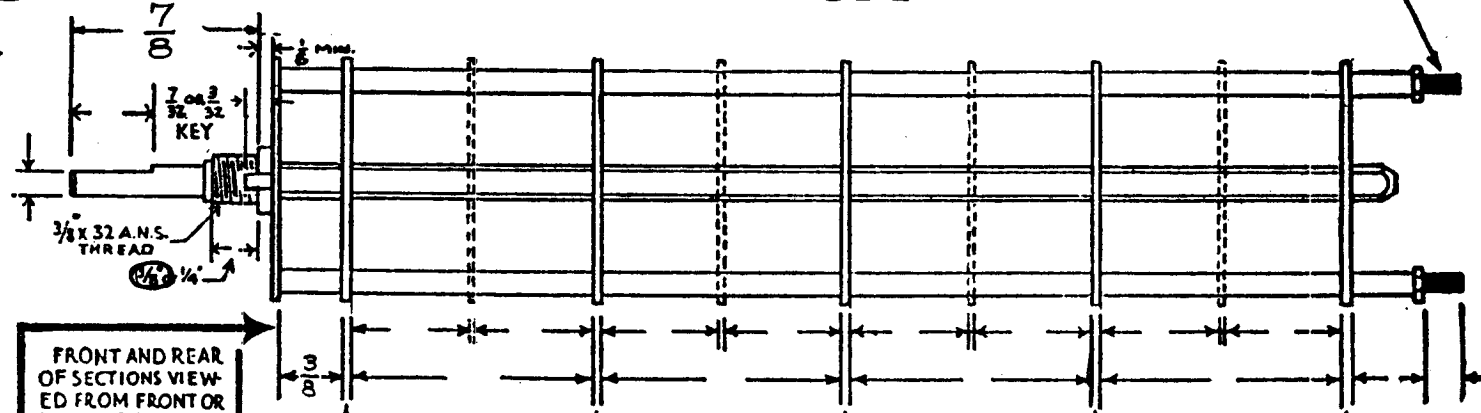
# OAK TYPE F SWITCH

4-40 THREAD



LOCATING KEY ONLY AT POINT SHOWN

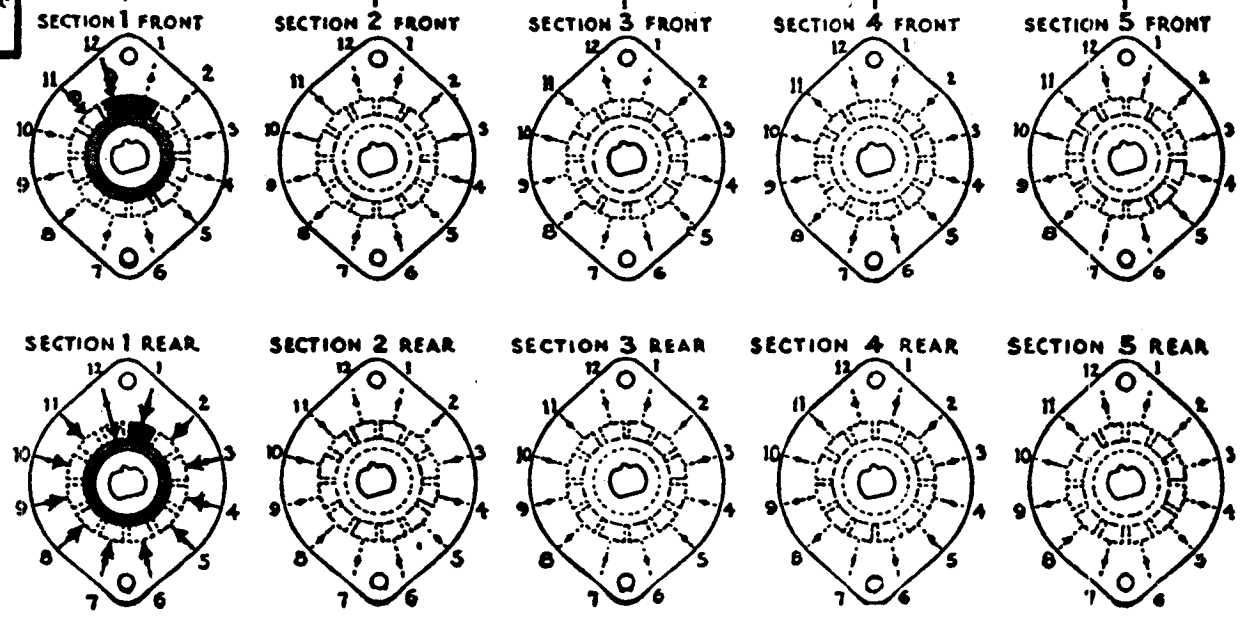
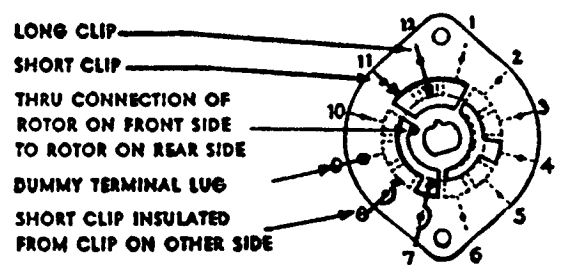
SHOW CUT AWAY PORTION OF FLAT IN BLACK AND GIVE ANGLE TO LINE A-A, ± 3° STANDARD RMA KNURLED AND SLOTTED SHAFT ALSO AVAILABLE



FRONT AND REAR OF SECTIONS VIEWED FROM FRONT OR KNOB END OF SWITCH IN EXTREME COUNTER-CLOCKWISE POSITION

NUMBER OF SECTIONS 1  
 NUMBER OF POSITIONS 12  
 ANGLE OF THROW 30° (30° OR 60°)

### SYMBOLS USED IN MARKING PRINT



CUSTOMER NOTES

OUTLINE ROTOR BLADES AS SHOWN ABOVE WITH SWITCH IN EXTREME COUNTER-CLOCKWISE POSITION

### SPECIFICATIONS

SHORTIN TYPE CONTACTS  NON-SHORTING  IF NOT SPECIFIED SHORTING TYPE WILL BE SUPPLIED.  
 INSULATION:  $\frac{1}{16}$ " BAKELITE ;  $\frac{1}{8}$ " MYCALEX  SPECIFY IMPREGNATION IF REQUIRED  
 FINISH REQUIREMENTS: COMMERCIAL ; ARMY ; NAVY ; SALT TEST (IF ANY GIVE DETAILS)  
 CONTACTS AND ROTORS: SILVER PLATED BRASS ; SOLID SILVER ALLOY ; IF NOT SPECIFIED SILVER PLATED BRASS WILL BE SUPPLIED.  
 MOUNTING HARDWARE: SUPPLY  $\frac{3}{8}$ " - 32 NUTS \_\_\_\_\_ ACROSS FLATS; MATERIAL \_\_\_\_\_ PLATING \_\_\_\_\_  
 \_\_\_\_\_  $\frac{3}{8}$ " INTERNAL TOOTH LOCKWASHER; MATERIAL \_\_\_\_\_ PLATING \_\_\_\_\_  
 STAMP PART NUMBER SW-250 ON FRONT PLATE, YES  NO   
 (NUMBER)

SWITCH, ROTARY, INTERLOCKS  
GPT-10000

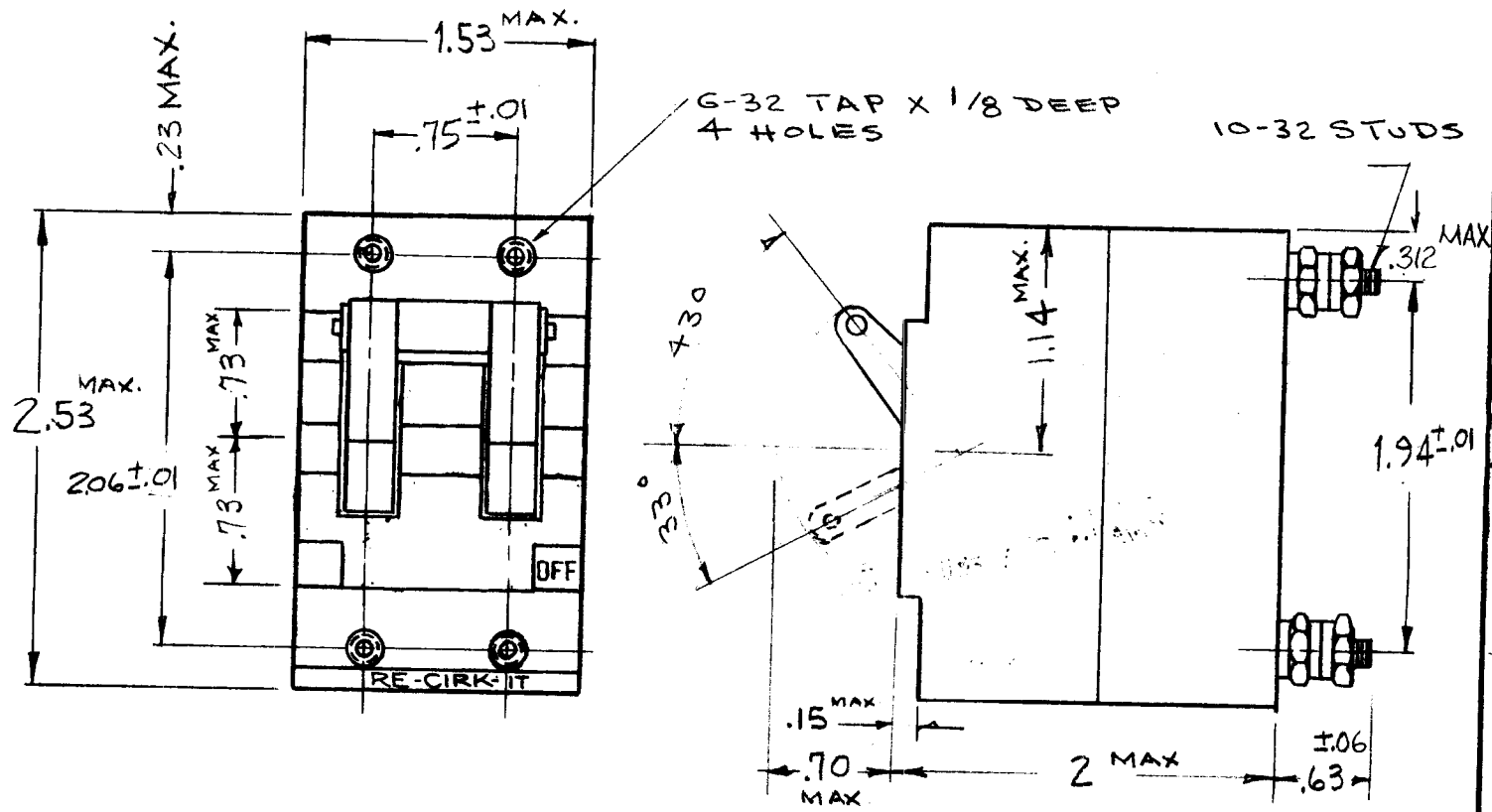
2.8  
ARB

SW-250

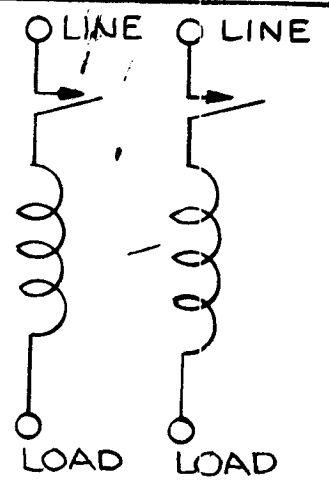
DATE \_\_\_\_\_

# STANDARD DRAWING

TMC P/N	MFG. P/N	CURRENT RATING	CURVE	REQ. PER. UNIT	USED ON			SW 251 F
					MODEL	ASS'Y. NO.	DATE	
SW251	XAM33MG6-10	10 AMP	5	1	GPT 10K	AT-183	5-8-59	
SW251-2	XAM33MG6-20	20 AMP	5					



**ELECTRICAL SPECIFICATIONS**  
 110/230V AC  
 60 CYCLES

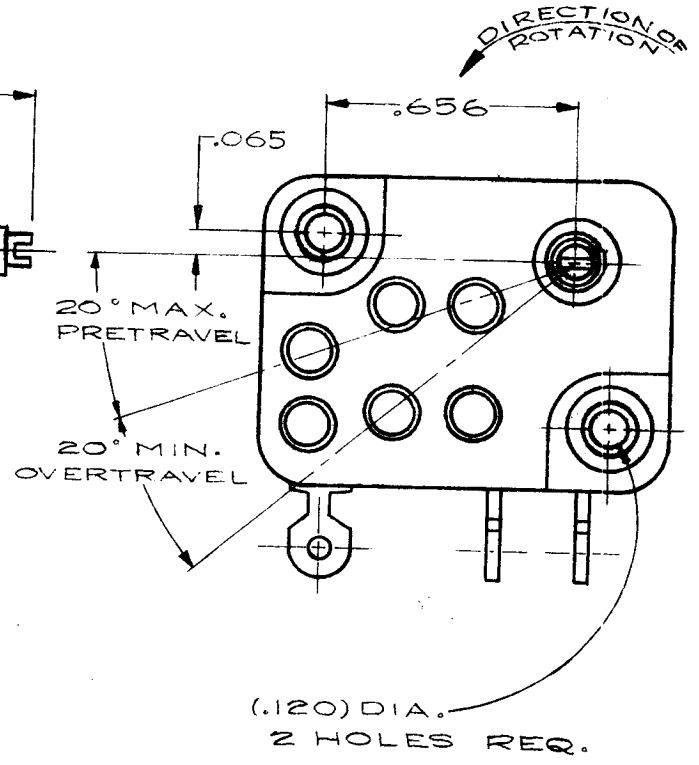
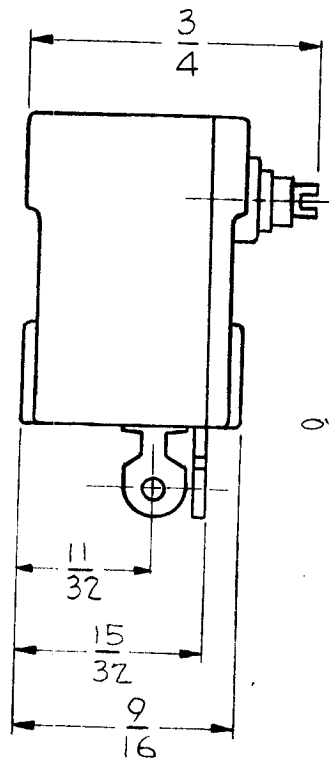
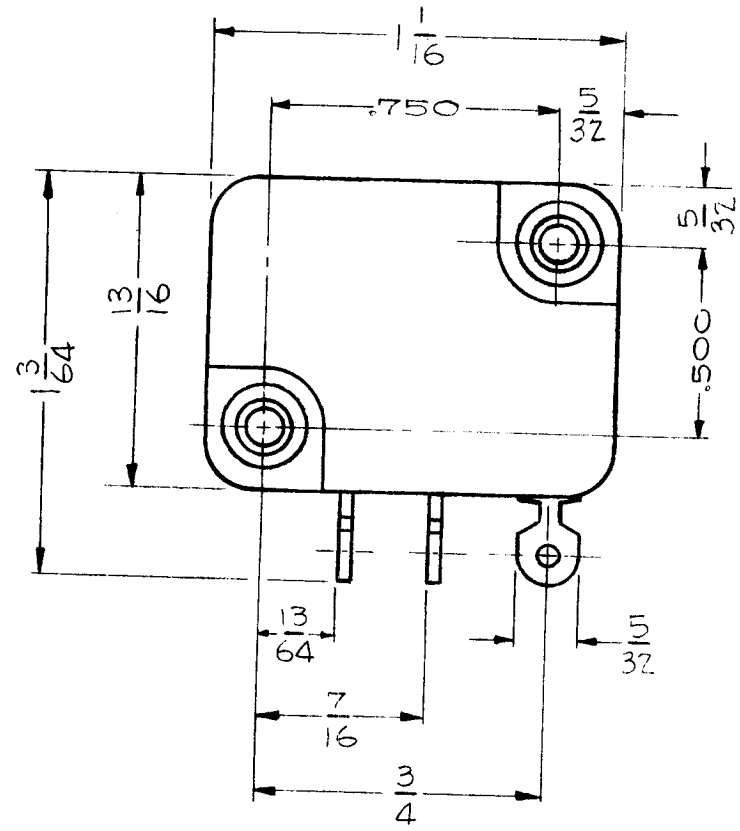


F		±.06 WAS ±.01 "ON/OFF" → "DEL .312 MAX WAS 5/16"	7.11.66	16514	WHO	JCS	R
E	2	"10 AMP" & "CURVE 5" DELETED ON SPECS. TMC P/N CHART ADDED.	3.23.65	13698	QF	JCS	
D	1	UPDATED & CLARIFIED ALL DECIMALS WERE FRAC.	1/22/64	10743	BD	JCS	
C	1	CHANGED DIMS. 1/2 TO 5/8 & 7/32 TO 15/64	9-23-63	10031	BD	JCS	
B	1	S401-58 NO WAS XAM33MG6	8-30-60	2875	CJ	JCS	Aide
A		ADDED 7/32, (2) 2 3/32 & 29/32 DIA.	9/3/59			JCS	AMP

REQ.	ITEM	PART NO.	DESCRIPTION	SYMBOL
			THE TECHNICAL MATERIEL CORP. MAMARONECK, NEW YORK	
			CIRCUIT BREAKER, AUX. LINE, ON-OFF	
			J.C. BIELE	<i>JCS</i>
			DRAWN	CHECKED
			8G.	FINAL APPROVAL
				SW 251 F
			ELEC. DES. APP	MECH. DES. APP

ISSUE ITEM		CHANGED FROM	DATE	CH. NO.	DRAFTS	CHECKER	ENG. APP.
TOLERANCES		SCALE: S-401-58					
DEC. DIM. ±		MAXIMUM ALLOWABLE TOLERANCES HAVE BEEN DETERMINED AND ANY DEVIATIONS WILL BE CAUSE FOR REJECTION. REMOVE ALL BURRS AND SHARP EDGES					
FRAC. DIM. ±							
ANGULAR DIM. ±							

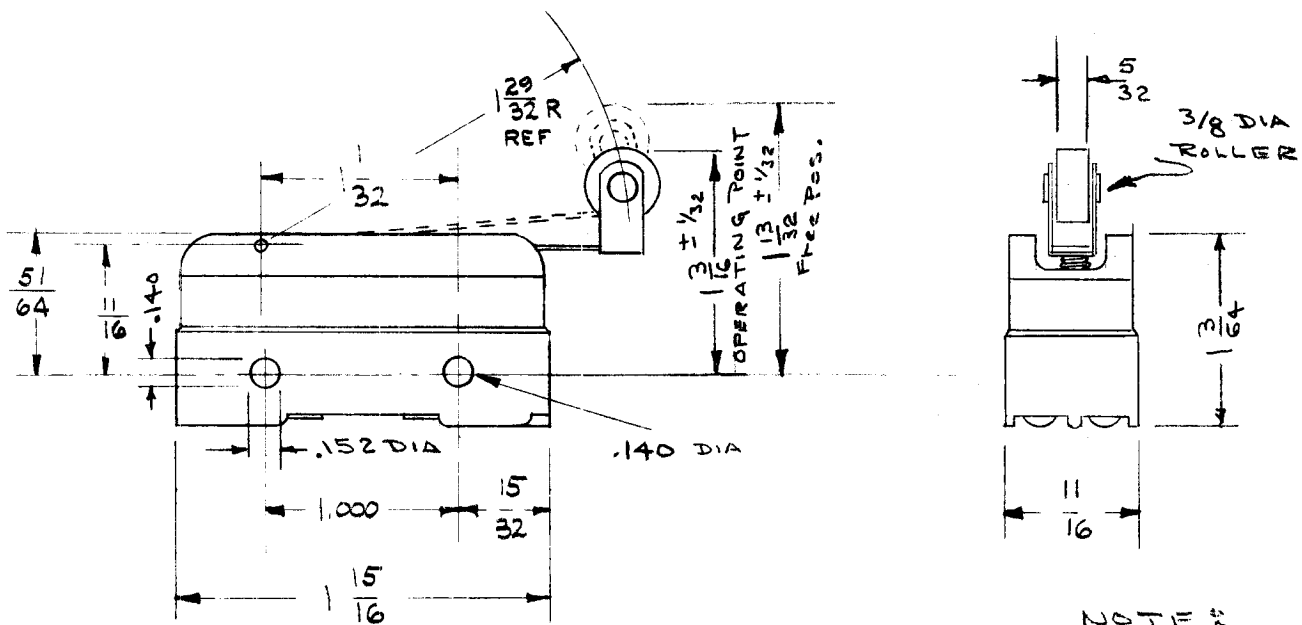
REQ. PER UNIT	USED ON			SW-252	B
	M DEL	ASS'Y. NO.	DATE		
1	RFB-1		1-9-59		



ELEC. SPEC.  
5A 125 OR 250 VAC

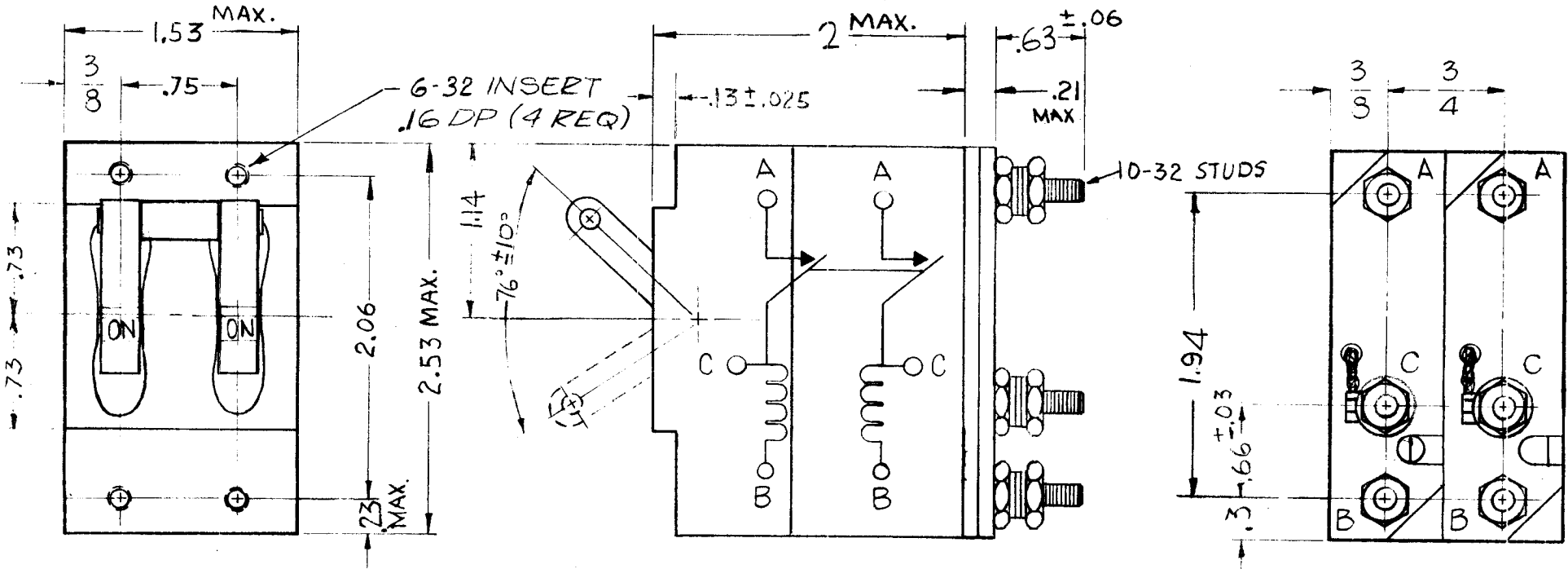
ISSUE	ITEM	CHANGED FROM	DATE	CH. NO.	DRAFTS	CHECKER	ENG. APP.	REQ.	ITEM	PART NO.	DESCRIPTION	SYMBOL	
B	1	13/16 DIM. LINE CLARIFIED	12/7/59	1638	A.B.	J.C.					THE TECHNICAL MATERIEL CORP. MAMARONECK, NEW YORK		
A	1	ELEC. SPEC. ADDED	1/9/59	677		C.G.					MICRO SWITCH, LOW TORQUE		
TOLERANCES			SCALE: S-401-18 (V4-16)					J.C. BIELE		16		O.A.B.	
DEC. DIM. ± FRAC. DIM. ± ANGULAR DIM. ±			MAXIMUM ALLOWABLE TOLERANCES HAVE BEEN DETERMINED AND ANY DEVIATIONS WILL BE CAUSE FOR REJECTION. REMOVE ALL BURRS AND SHARP EDGES					TYPE & TEMPER HEATTREAT. SPEC.		DRAWN		CHECKED	
								FINISH & SPEC. NO.		ELEC. DES. APP		MECH. DES. APP	
										SW-252		B	

REQ. PER. UNIT	USED ON			SW-260
	MODEL	ASSY. N.	DATE	
	1	TU-2	ATS-50(70)	



NOTE:  
 SPDT  
 15AMP @ 125 VAC  
 SOLDER TYPE TERMINALS  
 OPERATING FORCE: 1 - 3/2 OZ.  
 RELEASE FORCE: 3/4 OZ. MIN.  
 OVERTRAVEL: .156 IN. MIN.  
 DIFFERENTIAL TRAVEL: .004 - .040 MIN.

								REQ.	ITEM	PART NO.	DESCRIPTION	SYMBOL	
											THE TECHNICAL MATERIEL CORP.		
											MAMARONECK, NEW YORK		
											SWITCH, ROLLER LEVER		
ISSUE	ITEM	CHANGED FROM	DATE	CH. NO.	DRAFTS	CHECKER	ENG. APP.						
TOLERANCES			SCALE: S401-18 (BZ-2RW82)										
DEC. DIM. ±			MAXIMUM ALLOWABLE TOLERANCES HAVE BEEN DETERMINED AND ANY DEVIATIONS WILL BE CAUSE FOR REJECTION. REMOVE ALL BURRS AND SHARP EDGES										
FRAC. DIM. ±													
ANGULAR DIM. ±													
							TYPE & TEMPER	HEAT TREAT. SPEC.	DRAWN	CHECKED	FINAL APPROVAL		
									<i>[Signature]</i>	<i>[Signature]</i>	<i>[Signature]</i>		
							FINISH & SPEC. NO.		ELEC. DES. APP	MECH. DES. APP	SW-260		

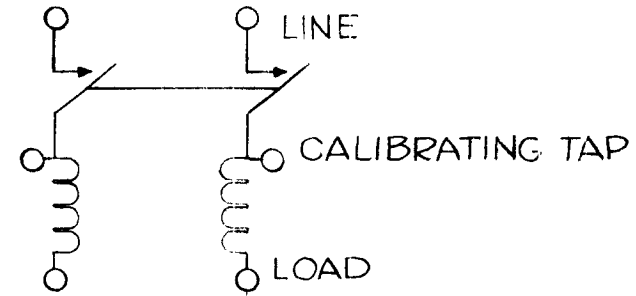


**SPECIFICATIONS ~**

AMPS - 15  
 CYCLES - 60  
 VOLTS - 230V AC  
 CURVE - 4

S401-58 (XAM 44)  
 S401-410 (APL 33-60HZ-15A-D61)

**SCHEMATIC ~**



E		CURVE 4 WAS 5	9/14/70	19974	d/m	(C)	LB
D		COMPLETELY REVISED	9/11/67	18399	H.G.		
C		DIM. CLARIFIED 6-32" INSERT WAS "TAP"	5.18.66	16262	WAS		
B	1	DIMS 23/32, V8, #1 1/8 ADDED	3-1-63	8334			
A	1	6-32 TAP FOR MOUNTING HOLES ADDED	2-19-60	3746	OH B F		

REQ.	ITEM	PART NO.	DESCRIPTION	SYMBOL
			THE TECHNICAL MATERIEL CORP. MAMARONECK, NEW YORK	
			CIRCUIT BREAKER, DUAL, CALIBRATING TAP	
			J.C. Biele	
			DRAWN	CHECKED
			FINAL APPROVAL	
				SW 261 E

ISSUE ITEM CHANGED FROM DATE CH. NO. DRAFTS CHECKER ENG. APP.

TOLERANCES SCALE: S401-58 (XAM 44)

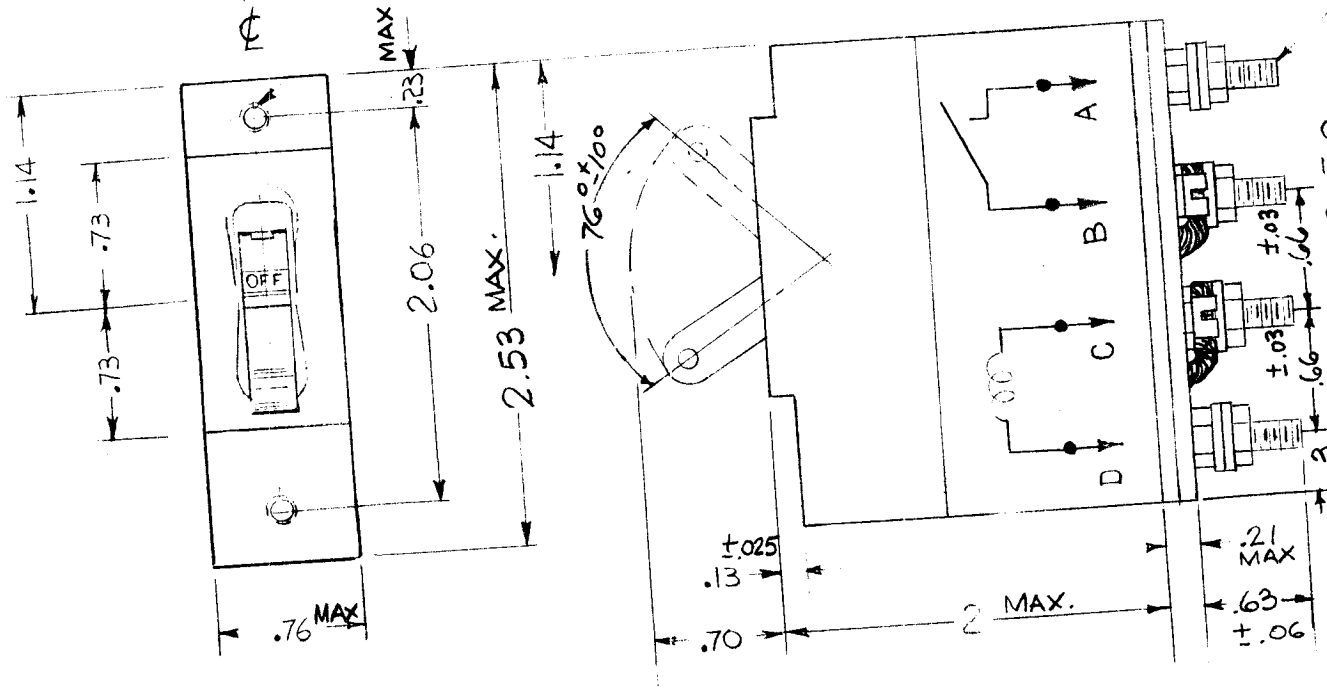
DEC. DIM. ±  
 FRAC. DIM. ± 1/64  
 ANGULAR DIM. ±

MAXIMUM ALLOWABLE TOLERANCES HAVE BEEN DETERMINED AND ANY DEVIATIONS WILL BE CAUSE FOR REJECTION. REMOVE ALL BURRS AND SHARP EDGES

REQ. PER. UNIT	USED ON		DATE
	MODEL	ASSY. NO.	10-14-1960
1	PS-4	CB 303	SW 262

— 6-32 THD. — 5/32 DEEP  
INSERTS

— 10-32 STUD



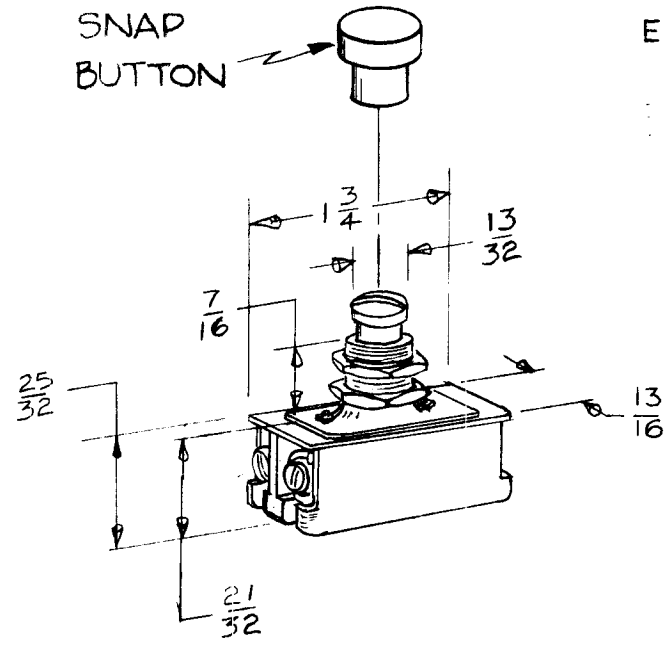
CONTACT AMPERE RATING:  
15 AMPS. AC, 50/60 CPS, 250V  
COIL (SEPARATE TERMINALS)  
.06 AMPS. DC  
INSULATION 1500V  
RIPPLE: 1%  
DELAY CURVE - 5

S401-450 (APL 5-DC-0.06A-DB1)  
S401-53 (PAM 12 RSKMG6)

						DESCRIPTION		SYMBOL
						THE TECHNICAL MATERIEL CORP.		
						MAMARONECK, NEW YORK		
						CIRCUIT BREAKER		
REQ.	ITEM	PART NO.		STOCK SIZE		MATERIAL		
E3	TOL. ADDED, 2.53 WAS 2 1/2	9.11.67	18399	H.G.	<i>EFM</i>			
A	DELE. "ON" "OFF" & ARROWS • REV. DIMS. ADD. TOL ± 0.1 ± 1/64	8-9-66	16737	RME	<i>CK</i>			
ISSUE ITEM	CHANGED FROM	DATE	CH. NO.	DRAFTS	CHECKER	ENG. APP.	DRAWN	
TOLERANCES		SCALE:				CHECKED		FINAL APPROVAL
DEC. DIM. ± 0.1		MAXIMUM ALLOWABLE TOLERANCES HAVE BEEN DETERMINED AND ANY DEVIATIONS WILL BE CAUSE FOR REJECTION. REMOVE ALL BURRS AND SHARP EDGES				ELEC. DES. APP		MECH. DES. APP
FRAC. DIM. ± 1/64						SW 262		B
ANGULAR DIM. ±								



REQ. PER UNIT	USED ON			SW-272
	MODEL	ASSY. NO.	DATE	
	GPT 40K		4-14-60	



ELECTRICAL SPECIFICATION

CIRCUIT : SPDT  
 RATINGS : 6A 250V, 12A  
 125V AC-DC

SW-272-B

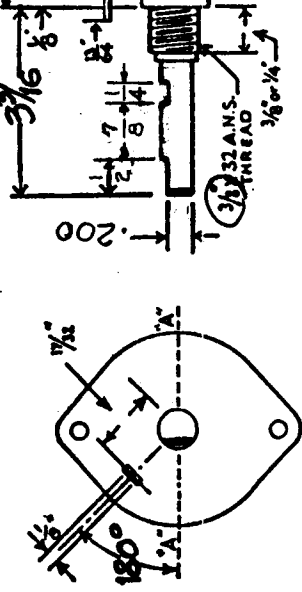
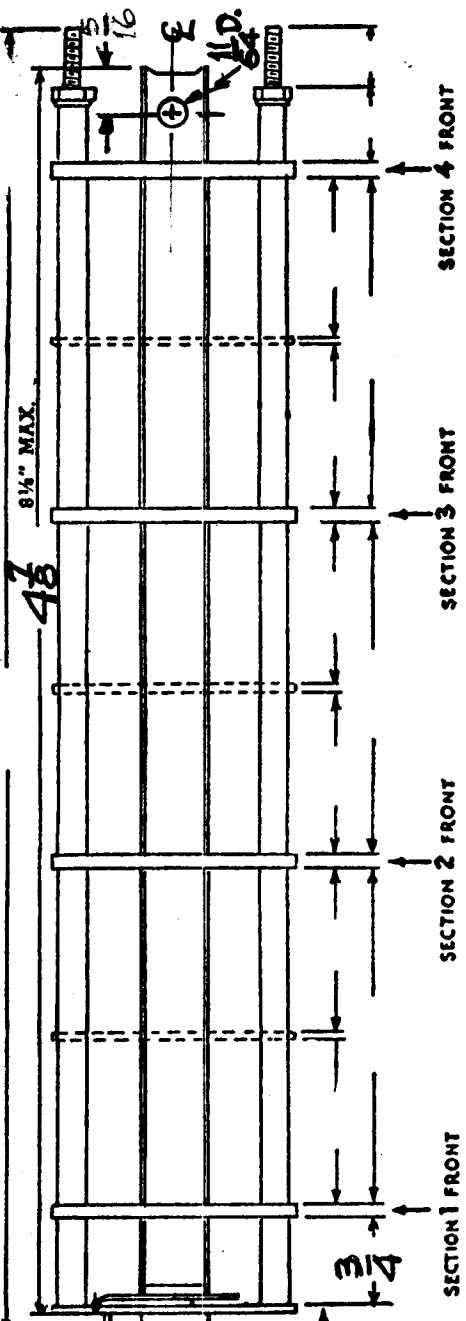
T.M.C DWG NO.      BUTTON COLOR  
 B= BLACK  
 R= RED

								REQ.	ITEM	PART NO.	DESCRIPTION	SYMBOL	
											<b>THE TECHNICAL MATERIEL CORP.</b> MAMARONECK, NEW YORK SWITCH, PUSH BUTTON MOMENTARY CONTACT		
								STOCK SIZE					
								MATERIAL					
ISSUE	ITEM	CHANGED FROM	DATE	CH. NO.	DRAFTS	CHECKER	ENG. APP.						
TOLERANCES			SCALE: S-401-38 (80979-F)										
DEC. DIM. ± FRAC. DIM. ± V64 ANGULAR DIM. ±			MAXIMUM ALLOWABLE TOLERANCES HAVE BEEN DETERMINED AND ANY DEVIATIONS WILL BE CAUSE FOR REJECTION. REMOVE ALL BURRS AND SHARP EDGES					TYPE & TEMPER	HEATTREAT. SPEC.	DRAWN	CHECKED	FINAL APPROVAL	
								FINISH & SPEC. NO.	ELEC. DES. APP	MECH. DES. APP	SW-272		

SW-278-E

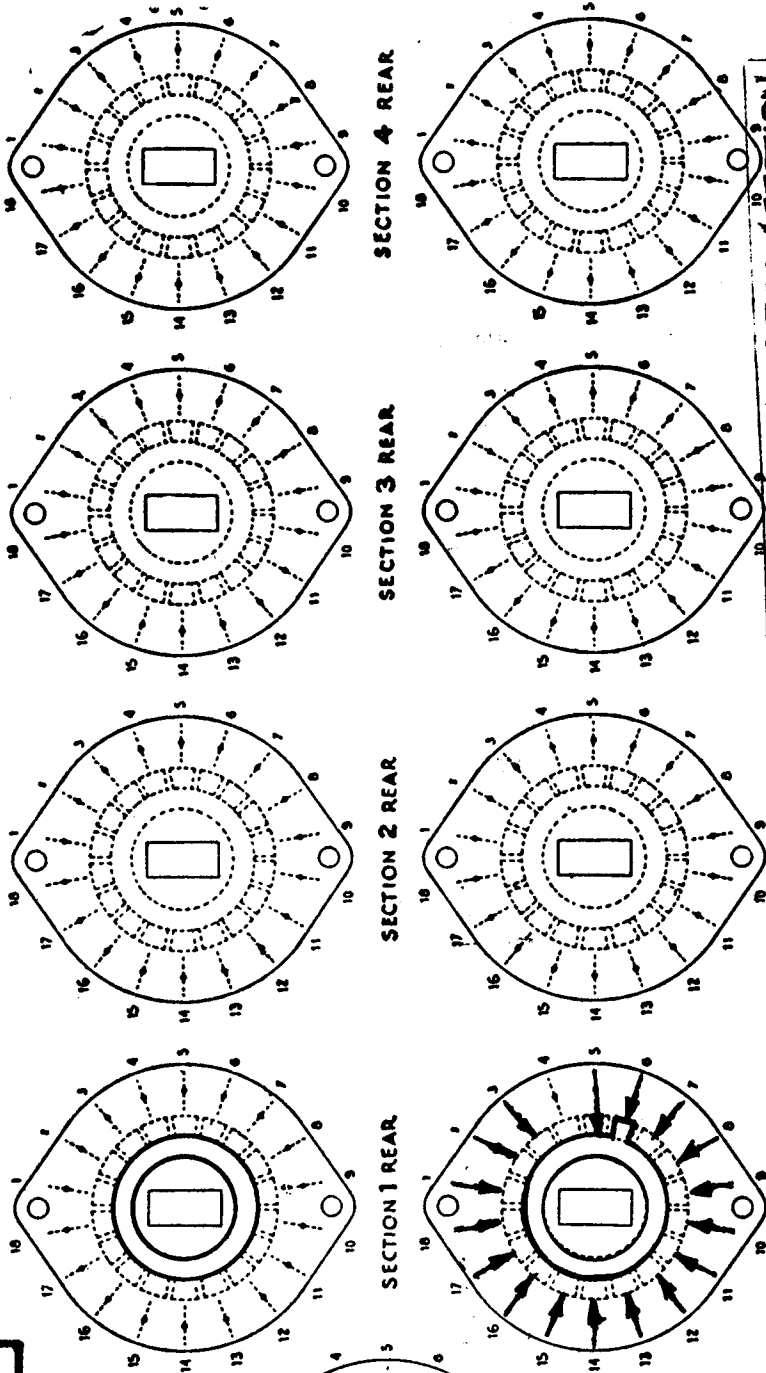
# OAK TYPE 18 POINT SWITCH

DL (Circle Type Desired)



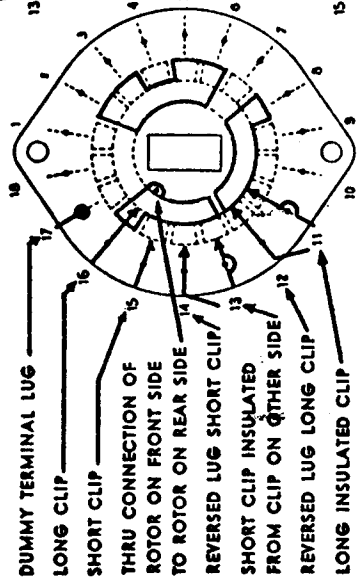
FRONT AND REAR OF SECTIONS VIEWED FROM FRONT OR REAR END OF SWITCH IN EXTREME COUNTER-CLOCKWISE POSITION

DRAW IN FLAT ON ABOVE SHAFT IN EXTREME COUNTER CLOCKWISE POSITION AND SHOW ANGLE IN REFERENCE TO LINE "A-A"



NUMBER OF SECTIONS 1  
NUMBER OF POSITIONS 16

SYMBOLS USED IN MARKING PRINT



OUTLINE ROTOR BLADES AS SHOWN ABOVE WITH SWITCH IN EXTREME COUNTER-CLOCKWISE POSITION  
TYPE L HAS CONTACTS MOUNTED BY A SINGLE EYELET.  
SECTION IS OVAL 1 1/2" x 2 1/4"  
TYPE DL HAS CONTACTS MOUNTED BY TWO EYELETS.  
SECTION IS 2 1/2" x 2 1/4"

CHECK ALL SPECIFICATIONS BELOW.

SHORTING TYPE CONTACTS  NON-SHORTING   
IF NOT SPECIFIED SHORTING TYPE WILL BE SUPPLIED.  
INSULATION: 3/4" BAKELITE ✓ SPECIFY IMPREGNATION IF REQUIRED  
CONTACTS AND ROTORS: SILVER PLATED BRASS  SOLID SILVER ALLOY  IF NOT SPECIFIED SILVER PLATED BRASS WILL BE SUPPLIED.  
MOUNTING HARDWARE: SUPPLY 3/8" - 32 NUTS ACROSS FLATS; MATERIAL PLATING  
3/8" INTERNAL TOOTH LOCKWASHER; MATERIAL PLATING  
STAMP PART NUMBER SW-278 ON FRONT PLATE, YES  NO

SWITCH, ROTARY 16 POS., 1 SECTION  
THE TECHNICAL MATERIAL CORPORATION  
MAMARONECK, NEW YORK  
DATE 9-6-60 CHKD. APD  
DRAWN D-T-M APPD. APD  
SHEET 1 OF 1 NO. SW-278 E

NOTE: "INDFY TYPE" SINGLE RAIL WITH BRASS SPRING

CUSTOMERS' PART NO. SW-278-1

CHG 51501 1REQ

CUSTOMER

OAK MFG CO. CHICAGO 10, ILL.

# REVISION SHEET

THE TECHNICAL MATERIEL CORP.  
MAMARONECK NEW YORK

MODEL CHG - 1

PROJECT NO SW-278

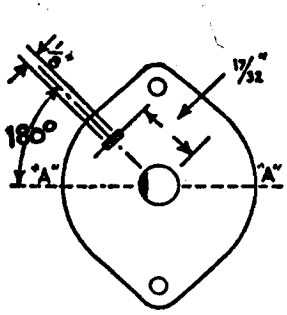
DATE	REV.	PAGE	EMN#	DESCRIPTION	CHK.	APP.
11-7-60	A		3427	Clarification of Section 1 FRONT	JCK	[Signature]
12-30-60	B		3848	ADDED DIM 3/16 @ 3/4 ON SHAFT FOR FLAT	[Signature]	[Signature]
1-30-61	C		4030	5/16 DIM. ON 11/64 DIA. Hole was 1/2"	JCK	[Signature]
3-2-61	D		4316	1/2" DIM WAS 3/4, .200 DIM. WAS 3/16, NOTE ADDED	JCK	[Signature]
7-26-62	E		6878	1/4" MILLED SLOT ADDED	[Signature]	[Signature]

SW-279-I

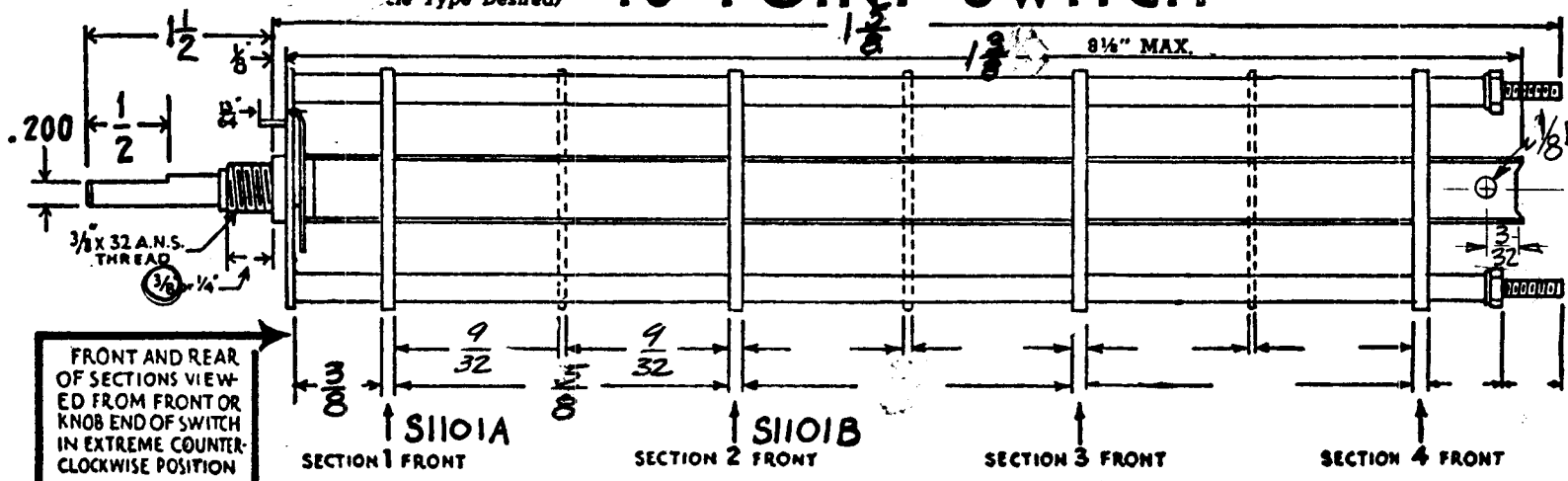
DL  
(ie Type Desired)

# 18 POINT SWITCH

SW-279-D



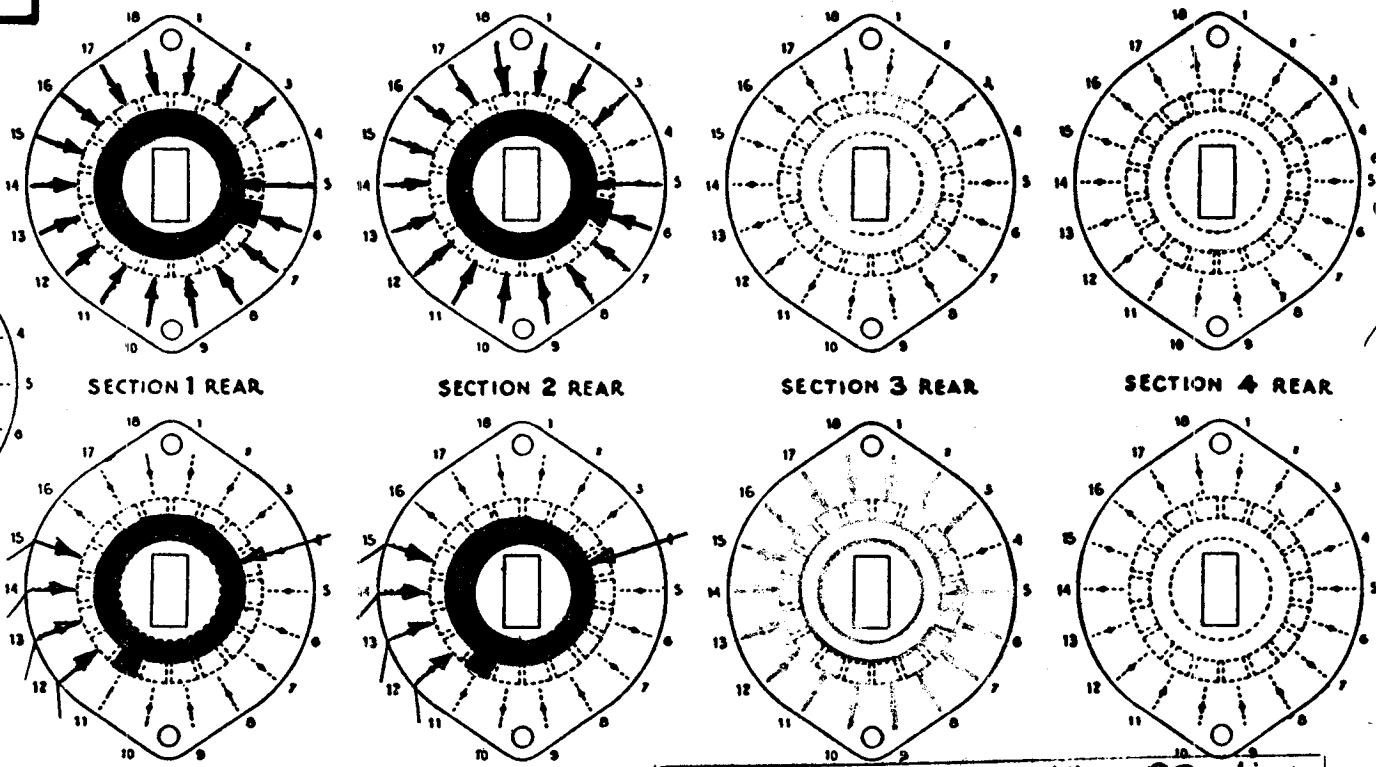
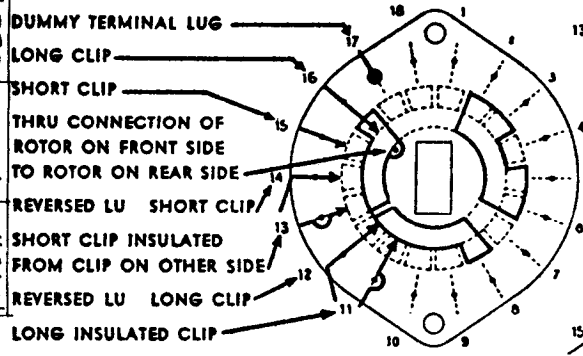
DRAW IN FLAT ON ABOVE SHAFT IN EXTREME COUNTER CLOCKWISE POSITION AND SHOW ANGLE IN REFERENCE TO LINE "A-A"



NUMBER OF SECTIONS 2  
NUMBER OF POSITIONS 16

### SYMBOLS USED IN MARKING PRINT

I REQ CHG MF/RF PER UNIT MODEL SECTION



OUTLINE ROTOR BLADES AS SHOWN ABOVE WITH SWITCH IN EXTREME COUNTER-CLOCKWISE POSITION  
TYPE L HAS CONTACTS MOUNTED BY A SINGLE EYELET.  
SECTION IS OVAL 1 1/8" x 2 1/8"  
TYPE DL HAS CONTACTS MOUNTED BY TWO EYELETS.  
SECTION IS 2 1/8" x 2 1/8"

### CHECK ALL SPECIFICATIONS BELOW.

SHORTING TYPE CONTACTS  NON-SHORTING   
IF NOT SPECIFIED SHORTING TYPE WILL BE SUPPLIED.  
INSULATION: 5/64" BAKELITE  SPECIFY IMPREGNATION IF REQUIRED \_\_\_\_\_  
CONTACTS AND ROTORS: SILVER PLATED BRASS  SOLID SILVER ALLOY  IF NOT SPECIFIED SILVER PLATED BRASS WILL BE SUPPLIED.  
MOUNTING HARDWARE: SUPPLY \_\_\_\_\_ 3/8" - 32 NUTS \_\_\_\_\_ ACROSS FLATS; MATERIAL \_\_\_\_\_ PLATING \_\_\_\_\_  
\_\_\_\_\_ 3/8" INTERNAL TOOTH LOCKWASHER; MATERIAL \_\_\_\_\_ PLATING \_\_\_\_\_  
STAMP PART NUMBER SW-279 ON FRONT PLATE, YES  NO   
(NUMBER)

SWITCH, ROTARY, 16 Position, 2 Sections

THE TECHNICAL MATERIAL CORPORATION  
MAMARONECK, NEW YORK

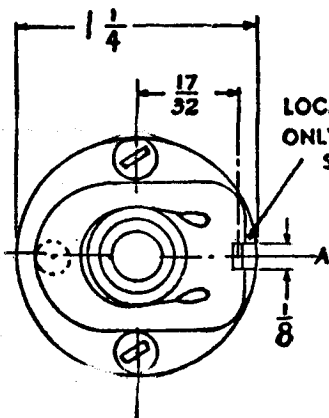
DATE 9-6-60 CHKD. J. ANGER  
DRAWN D. J. Moran APPD. \_\_\_\_\_  
SHEET 1 OF 1 NO. SW-279 ID

NOTE: "INDEX TYPE" SINGLE BALL WITH BRASS SPRING.



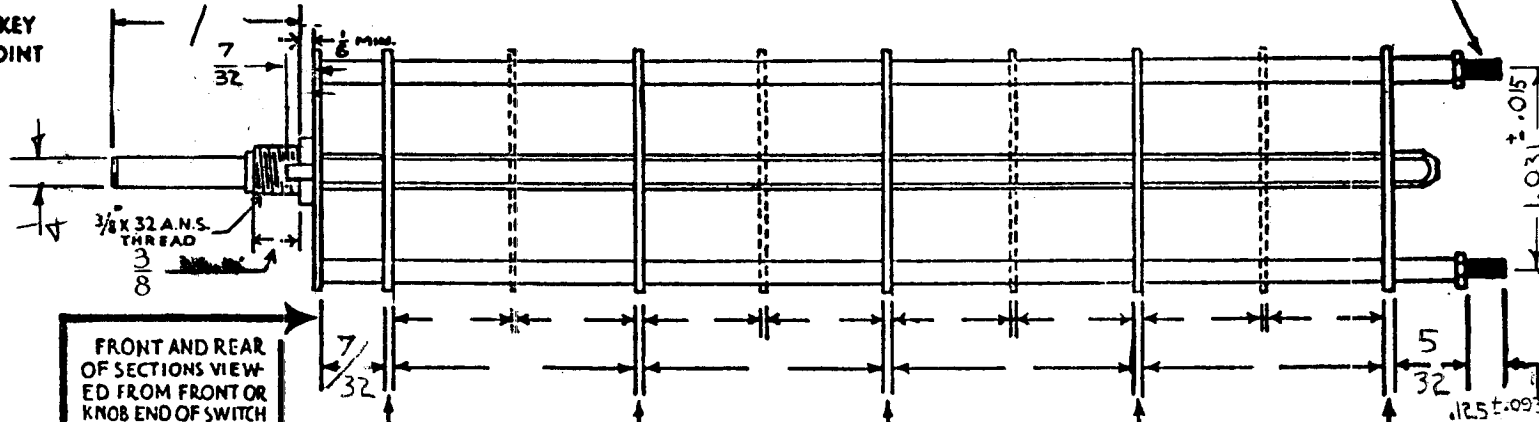
SW-281-D

# OAK TYPE F SWITCH



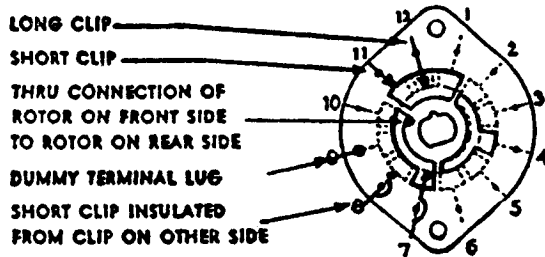
LOCATING KEY ONLY AT POINT SHOWN

SHOW CUT AWAY PORTION OF FLAT IN BLACK AND GIVE ANGLE TO LINE A-A, ± 3° STANDARD RMA KNURLED AND SLOTTED SHAFT ALSO AVAILABLE

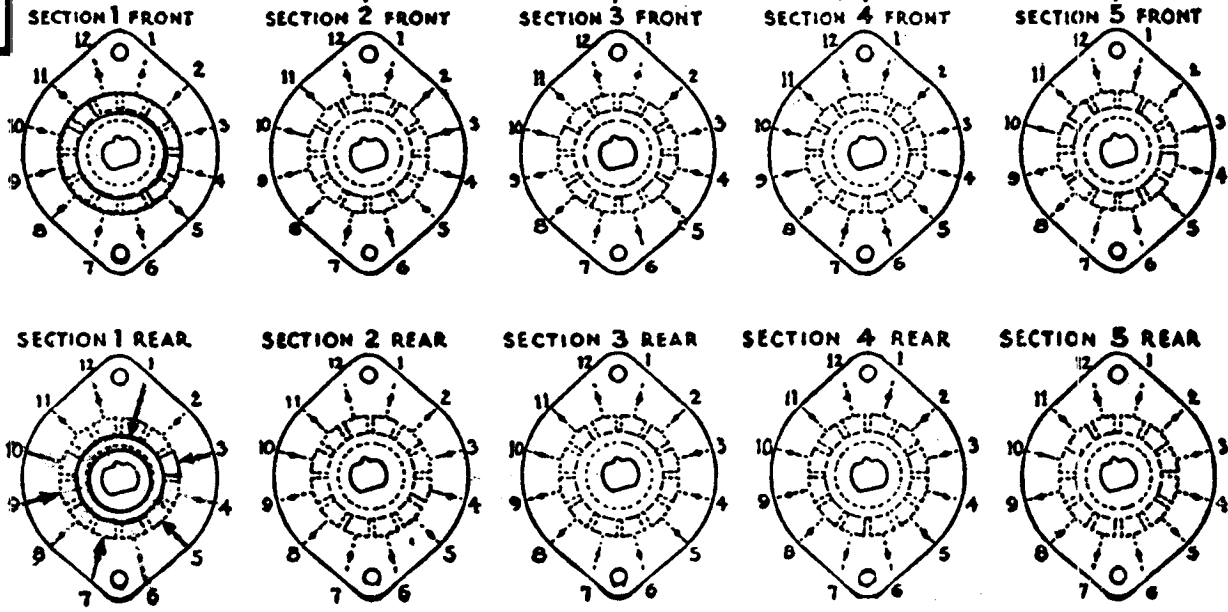


NUMBER OF SECTIONS  $\frac{1}{4}$   
 NUMBER OF POSITIONS  $\frac{1}{4}$   
 ANGLE OF THROW  $60^\circ$  (OR  $60^\circ$ )

### SYMBOLS USED IN MARKING PRINT



UTLINE ROTOR BLADES AS SHOWN ABOVE WITH SWITCH IN EXTREME COUNTER-CLOCKWISE POSITION



CUSTOMER NOTES

### SPECIFICATIONS

SHORTIN TYPE CONTACTS  NON-SHORTING  IF NOT SPECIFIED SHORTING TYPE WILL BE SUPPLIED.  
 INSULATION:  $\frac{1}{16}$ " BAKELITE   $\frac{1}{8}$ " MYCALEX  SPECIFY IMPREGNATION IF REQUIRED.  
 FINISH REQUIREMENTS: COMMERCIAL  ARMY  NAVY  SALT TEST (IF ANY GIVE DETAILS).  
 CONTACTS AND ROTORS: SILVER PLATED BRASS  SOLID SILVER ALLOY  IF NOT SPECIFIED SILVER PLATED BRASS WILL BE SUPPLIED.  
 MOUNTING HARDWARE: SUPPLY  $\frac{1}{8}$ " - 32 NUTS \_\_\_\_\_ ACROSS FLATS; MATERIAL STEEL PLATING CAD  
 $\frac{1}{8}$ " INTERNAL TOOTH LOCKWASHER; MATERIAL STEEL PLATING CAD

STAMP PART NUMBER SW-281-D (NUMBER) ON FRONT PLATE, YES  NO

SWITCH, ROTARY	
THE TECHNICAL MATERIAL CORPORATION	
MAMARONECK, NEW YORK	
DATE <u>9-22-60</u>	CHKD. <u>[Signature]</u>
DRAWN	APPD. <u>[Signature]</u>
SHEET _____ OF _____	NO. <u>SW-281-D</u>

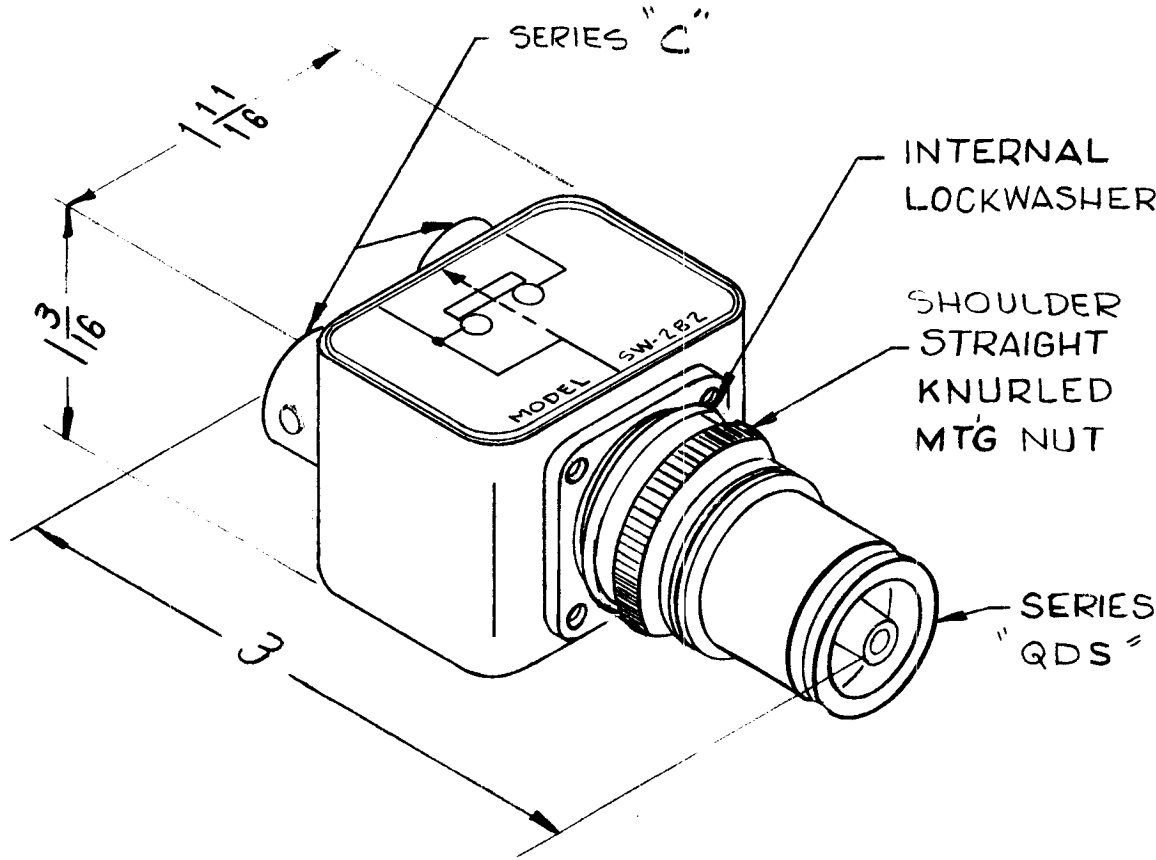
MODEL-TIS-3

DATE 9-22-60

DATE 88-66 16726 RMA SW281 D  
 DATE 5/32/125 ± .093, 1.013 ± .015, DELE 15/16, CHG D, DIM FR. 3/16 TO 7/32, CHG'D POS. OF 7/32 DIM. LINE, CHG'D MAT'G. HDW.  
 SYM D DESCRIPTION

(APPROX DIMENSIONS)

REQ. PER UNIT 1	USED ON		
	MODEL SPP-14	ASS'Y. NO.	DATE 4-13-61
SW-282 B			



NOTES

- 1~ CASE MATERIAL-BRASS  
FINISH-SI15 TMC SMOOTH  
GRAY ENAMEL.
- 2~ CONNECTORS FINISH:  
BODIES-RHODIUM FLASH.  
CONTACTS-GOLD FLASH.
- 3~ FOR MOUNTING-13/16 DIA  
HOLE REQ.
- 4~ MAX PANEL THICKNESS-3/16.

NOTE: ASSIGNED PATENT NO. 2,  
767,267

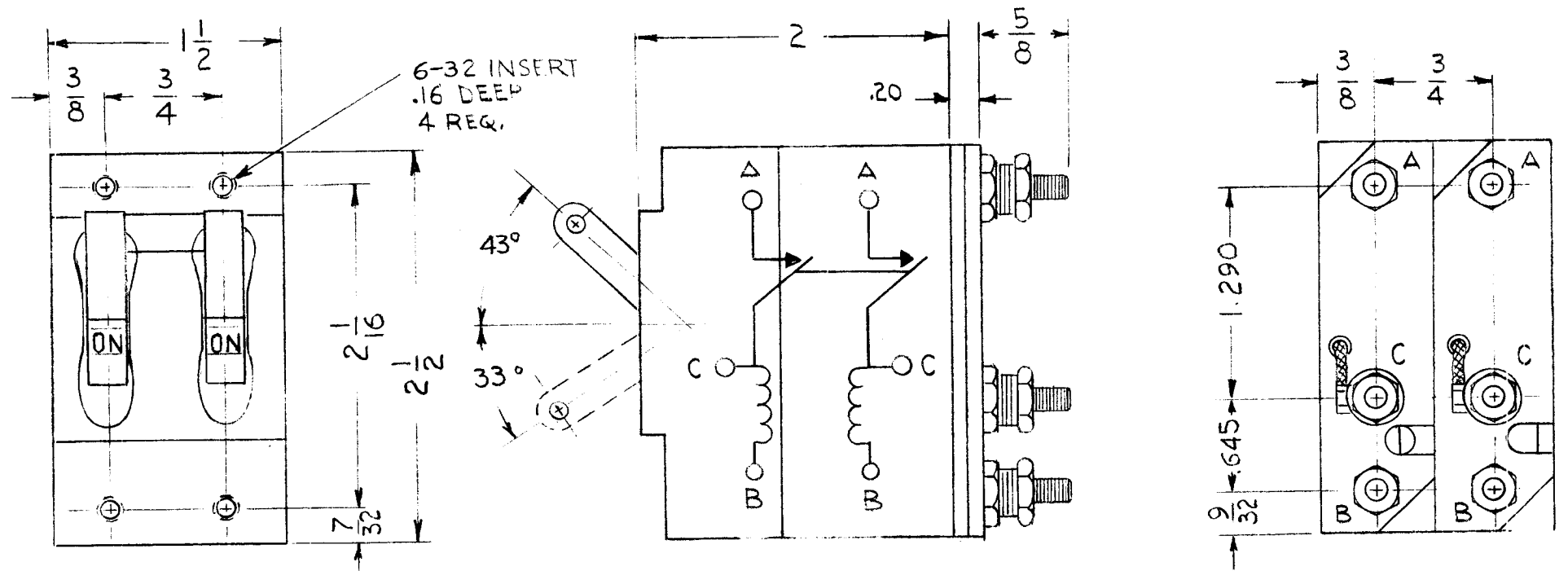
ISSUE	ITEM	CHANGED FROM	DATE	CH. NO.	DRAFTS	CHECKER	ENG. APP.	REQ. ITEM	PART NO.	DESCRIPTION	SYMBOL		
										<b>THE TECHNICAL MATERIEL CORP.</b> MAMARONECK. NEW YORK <b>SWITCH, RF</b> <b>DUAL TYPE "C" to SINGLE "QDS"</b>			
B		PATENT NOTE ADDED	9/30/65	14846	P.L.	JCP	[Signature]						
A	1	COMPLETELY UPDATED	2-12-63	8178	[Signature]	XIP	[Signature]		SEE NOTES				
TOLERANCES			SCALE: 2A-2086								R. UZZO		
DEC. DIM. ± FRAC. DIM. ± ANGULAR DIM. ±			MAXIMUM ALLOWABLE TOLERANCES HAVE BEEN DETERMINED AND ANY DEVIATIONS WILL BE CAUSE FOR REJECTION. REM VE ALL BURRS AND SHARP EDGES								TYPE & TEMPER HEAT TREAT. SPEC.	DRAWN CHECKED	FINAL APPROVAL
											SEE NOTES		
											FINISH & SPEC. NO.	ELEC. DES. APP.	MECH. DES. APP.
													SW-282 B

STANDARD DRAWING

REQ. PER. UNIT	USED ON		
	MODEL	A S'Y. NO.	DATE
1	APP-5		3-3-61

SW-283

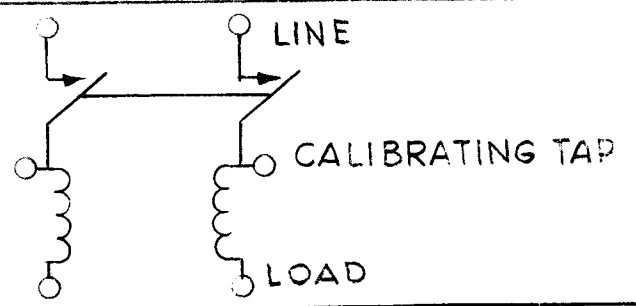
A



SPECIFICATIONS ~

AMPS - 10  
CYCLES - 60  
VOLTS - 230VAC  
CURVE - 5

SCHEMATIC -

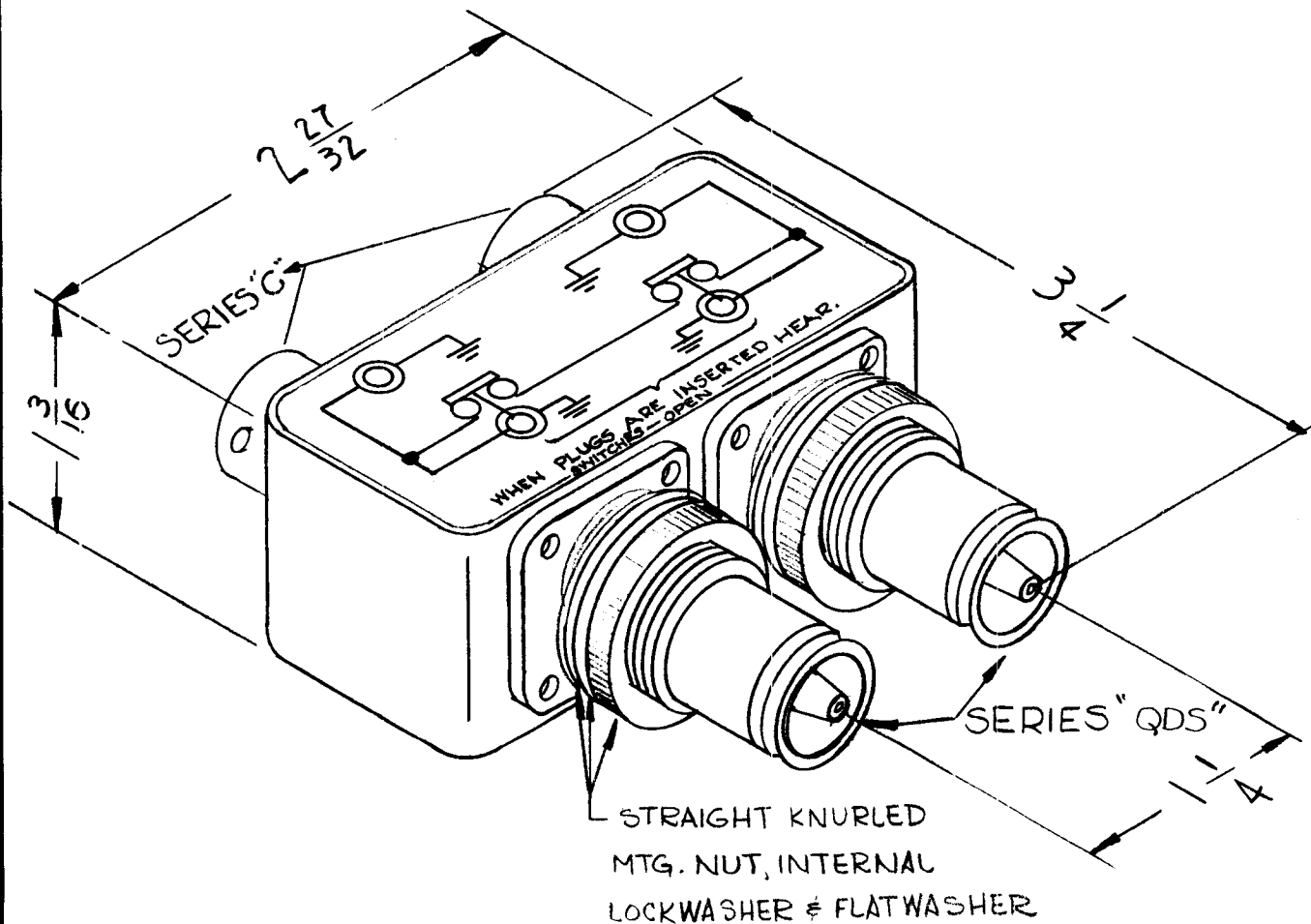


								REQ.	ITEM	PART NO.	DESCRIPTION	SYMBOL	
								THE TECHNICAL MATERIEL CORP. MAMARONECK, NEW YORK					
								CIRCUIT BREAKER. DUAL, CALIBRATING TAP					
A		CHG'D. DIMS 1 63/64 ± 1/2 TO 2 ± 5/8 CHG'D. 6-32 TAP TO 6-32 INSERT	3-1-66	16664	RME	<i>[Signature]</i>	<i>[Signature]</i>				<i>[Signature]</i>		
ISSUE		CHANGED FROM	DATE	CH. NO.	DRAFTS	CHECKER	ENG. APP.	MATERIAL					
TOLERANCES			SCALE: 5/401-58 (XAM44)										
DEC. DIM. ± FRAC. DIM. ± ANGULAR DIM. ±			MAXIMUM ALLOWABLE TOLERANCES HAVE BEEN DETERMINED AND ANY DEVIATIONS WILL BE CAUSE FOR REJECTION. REMOVE ALL BURRS AND SHARP EDGES					TYPE & TEMPER HEATTREAT. SPEC.		DRAWN CHECKED		FINAL APPROVAL	
								FINISH & SPEC. NO.		ELEC. DES. APP		MECH. DES. APP	
										RK		SW-283 A	



(APPROX DIMENSIONS)

REQ. PER UNIT	USED ON			SW-284 B
	MODEL	ASS'Y. NO.	DATE	
	SPP-15B11		4-14-61	

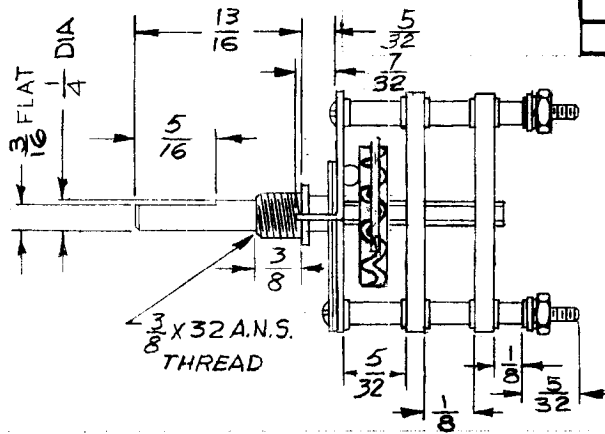
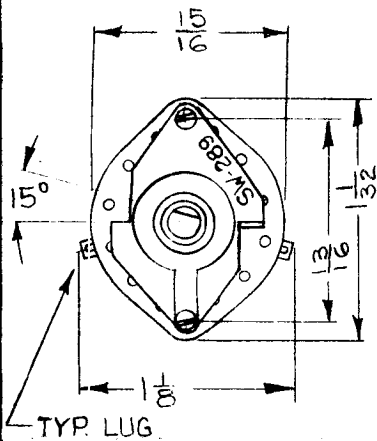


NOTES:

1. CASE: MATERIAL - BRASS  
FINISH - S115 TMC  
SMOOTH GRAY ENAMEL
2. CONNECTORS FINISH:  
BODIES - RHODIUM FLASH  
CONTACTS - GOLD FLASH
3. FOR MOUNTING: 13/16 DIA.  
HOLES REQ.
4. MAX. PANEL THICKNESS:  
3/16

NOTE: ASSIGNED PATENT NO. 2,767,267

ISSUE	ITEM	CHANGED FROM	DATE	CH. NO.	DRAFTS	CHECKER	ENG. APP.	REQ. ITEM	PART NO.	DESCRIPTION	SYMBOL		
										THE TECHNICAL MATERIEL CORP. MAMARONECK, NEW YORK SWITCH R.F. DUAL QDS TO DUAL "C"			
B		PATENT NOTE ADDED	2/5/65	14846	P.V.	QCB	MM				STOCK SIZE		
A	2	NOTES ADDED	3-4-63	8360		VIA	MM				MATERIAL		
										RUZZO			
TOLERANCES			SCALE: 2A-2085					TYPE & TEMPER		HEAT TREAT. SPEC.	DRAWN	CHECKED	FINAL APPROVAL
DEC. DIM. ± FRAC. DIM. ± ANGULAR DIM. ±			MAXIMUM ALLOWABLE TOLERANCES HAVE BEEN DETERMINED AND ANY DEVIATIONS WILL BE CAUSE FOR REJECTION. REMOVE ALL BURRS AND SHARP EDGES					FINISH & SPEC. NO.		ELEC. DES. APP.	MECH. DES. APP.	SW-284	B



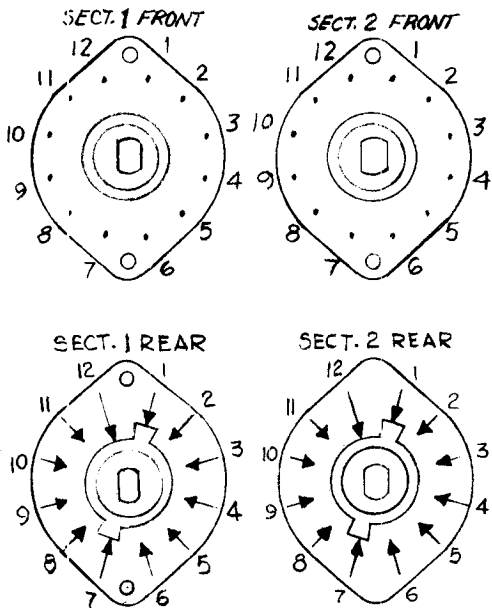
REQ. PER. UNIT	USED ON			SW-289	A
	MODEL	ASSY. NO.	DATE		
1	GPR-92	A-2120	9-11-61		

**SPECIFICATIONS:**

- CONTACT TYPE - SHORTING
- INSULATION - 1/8" THICK CERAMIC (PER MIL-I-10, GRADE L-533)
- FINISH REQUIREMENTS - COMMERCIAL
- CONTACTS AND ROTORS - SILVER PLATED BRASS
- MOUNTING HARDWARE SUPPLIED -
  - ONE 3/8-32 NUT, 1/2" ACROSS FLATS; MATERIAL - BRASS
  - FINISH - NICKEL PLATING
  - ONE 3/8" INTERNAL TOOTH LOCKWASHER; MATERIAL - BRONZE
  - FINISH - NICKEL PLATING
- SHAFT - STEEL, COLD DRAWN; CADMIUM PLATED
- STAMP PART NUMBER ON FACE PLATE - SW-289

NUMBER OF SECTIONS 2  
 NUMBER OF POSITIONS 6  
 ANGLE OF THROW 30°

FRONT AND REAR OF SECTIONS VIEWED FROM FRONT OR KNOB END OF SWITCH IN EXTREME COUNTER-CLOCKWISE POSITION.



MFR: CENTRALAB SERIES PA-116 W/SPECS SHOWN.

REQ.	ITEM	PART NO.	GELLMAN	DESCRIPTION	SYMB L													
				THE TECHNICAL MATERIEL CORP.														
				MAMARONECK, NEW YORK														
				SWITCH, ROTARY, CERAMIC														
A	DIMS & SPECIFICATIONS CLARIFIED	1-4-63 8693	<i>JW</i>	<i>JW</i>														
ISSUE	ITEM	CHANGED FROM	DATE	CH. NO.	DRAFTS	CHECKER	ENG. APP.											
TOLERANCES			SCALE: N.T.S.						<i>wh</i>	<i>JW</i>	<i>JW</i>	<i>BP</i>						
DEC. DIM. ±			MAXIMUM ALLOWABLE TOLERANCES HAVE BEEN DETERMINED AND ANY DEVIATIONS WILL BE CAUSE FOR REJECTION. REMOVE ALL BURRS AND SHARP EDGES				TYPE & TEMPER		HEATTREAT. SPEC.		DRAWN		CHECKED		FINAL APPROVAL			
FRAC. DIM. ±							FINISH & SPEC. NO.		ELEC. DES. APP.		MECH. DES. APP.							
ANGULAR DIM. ±																		

THE CONTENTS OF THIS DRAWING ARE THE EXCLUSIVE PROPERTY OF THE TECHNICAL MATERIEL CORP. ITS UNAUTHORIZED USE OR REPRODUCTION IN WHOLE OR IN PART IS STRICTLY FORBIDDEN.

REQ. PER UNIT

USED ON

MODEL

ASS'Y. NO.

DATE

Stand.

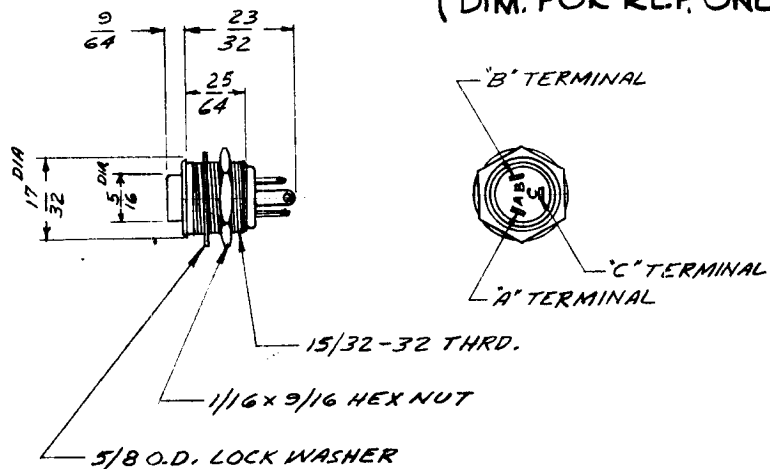
10/25/61

SW-296

A

TMC PART NO.	MFG'RS NO.	BUTTON COLOR	CONTACT ARRANGE	CONTACT ARRANGEMENT
SW-296-1	903	RED	A	<p>Break-make</p>
SW-296-2	913	BLACK	A	
SW-296-3	903D	RED	B	
SW-296-4	913D	BLACK	B	
				<p>Make before break</p>

(DIM. FOR REF. ONLY)

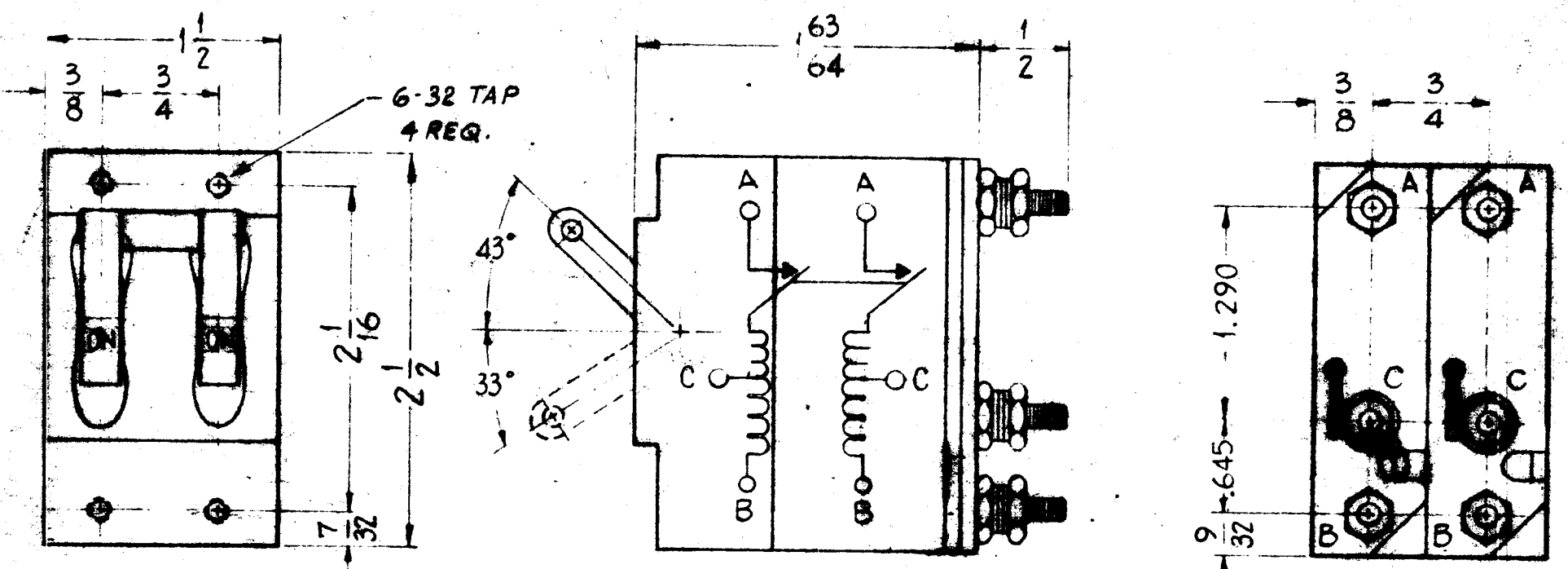


NOTES:

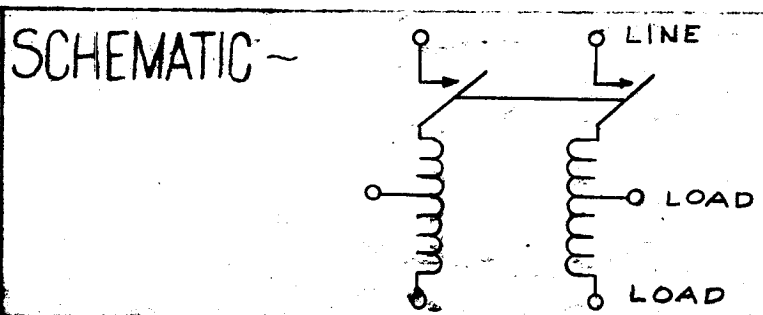
- HOUSING- Brass, Nickel Plated
- INSULATOR- Linen base
- TERMINALS- Brass, silver plated
- MTC. HARDWARE- Nut, brass, nickel plated
- Lockwasher, steel.
- RATINGS- 250 ma, non-induct, AC, 30 w. max.

STANDARD DRAWING

REQ.	ITEM	PART NO.	DESCRIPTION	SYMBOL		
			THE TECHNICAL MATERIEL CORP. MAMARONECK, NEW YORK			
			SWITCH, PUSH BUTTON			
			MATERIAL			
A			CLARIFIED BUTTON COLOR COLUMN ON CHART, WAS BOTTOM COLOR.			
SYM	DESCRIPTION	DATE	CH. NO.	DRAFTS	CHECKER	ENG. APP.
	UNLESS OTHERWISE SPECIFIED: DIMENSIONS ARE IN INCHES. TOLERANCES ON FRAC. ± 1/64 DEC. ± .005 ANGLES ± 1/2°		SCALE: S401-154			
			MAXIMUM ALLOWABLE TOLERANCES HAVE BEEN DETERMINED AND ANY DEVIATIONS WILL BE CAUSE FOR REJECTION. REMOVE ALL BURRS AND SHARP EDGES			
			TYPE & TEMPER	HEAT TREAT. SPEC.		
			FINISH & SPEC. NO.			
			W.S. 10-25-61	RUIZZO		
			DRAWN	CHECKED		
			MECH. DES. APP.			
						SW-296 A



**SPECIFICATIONS ~**  
 AMPS - 7.5 AMP AT 230V  
 15 AMP AT 115V  
 CYCLES - 60  
 VOLTS - MAX. OPER. VOLT: 230 V. AC.  
 CURVE - 5



ISSUE	ITEM	CHANGED FROM	DATE	CH. NO.	DRAFTS	CHECKER	ENG APP.
TOLERANCES			SCALE: 5/01-58 (XAM33DRK)				
DEC DIM. ±			MAXIMUM ALLOWABLE TOLERANCES HAVE BEEN DETERMINED AND ANY DEVIATIONS WILL BE CAUSE FOR REJECTION. REMOVE ALL BURRS AND SHARP EDGES				
FRAC DIM. ± 1/64							
ANGULAR DIM. ±							

REV.	TYPE	PART NO.	DESCRIPTION
			THE TECHNICAL DRAWING AND
			DRAWING CHECKED BY
			CIRCUIT BREAKER
			DUAL
			W.S. J.R.D. S.M.
			DRAWN CHECKED
			FILED
			SW-298