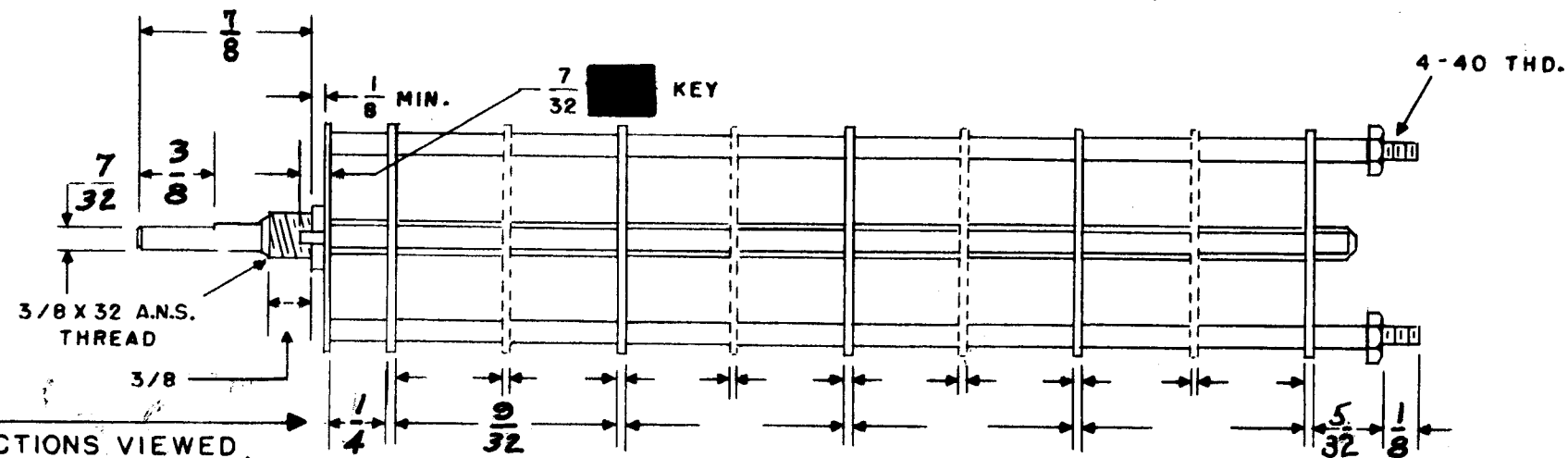
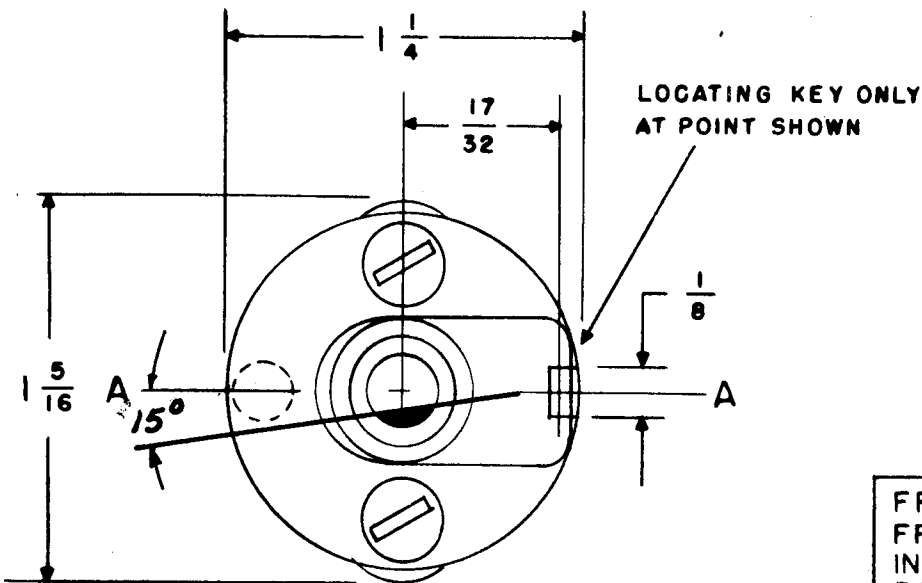


SW-299 B



FRONT & REAR OF SECTIONS VIEWED FROM FRONT OR KNOB END OF SWITCH IN EXTREME COUNTER-CLOCKWISE POSITION

SHOW CUT AWAY PORTION OF FLAT IN BLACK AND GIVE ANGLE TO LINE A-A $\pm 3^\circ$. (STANDARD RMA KNURLED AND SLOTTED SHAFT ALSO AVAILABLE)

NUMBER OF SECTIONS 2
 NUMBER OF POSITIONS 2
 ANGLE OF THROW 30° (30°)

PART NUMBER SW-299

STAMP ON FRONT PLATE YES NO

CONTACTS & ROTORS: (IF NOT SPECIFIED, SHORTING TYPE WILL BE SUPPLIED)

SHORTING NON SHORTING

MATERIAL: (IF NOT SPECIFIED, SILVER PLATED BRASS WILL BE SUPPLIED)

SILVER PLATED BRASS SILVER ALLOY

INSULATION: 1/16 BAKELITE 1/8 MYCALEX

SPECIFY IMPREGNATION IF REQUIRED _____

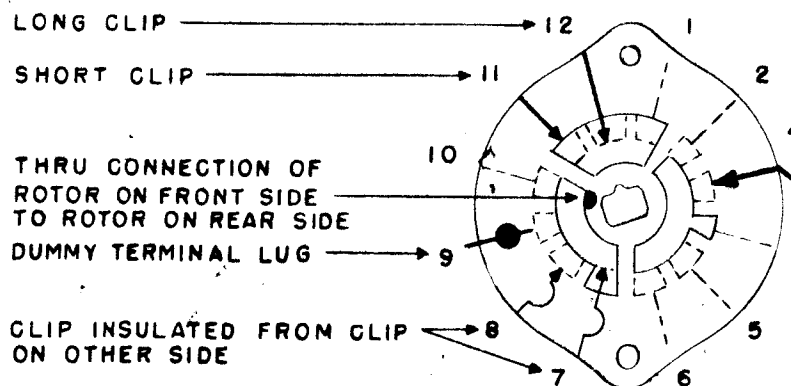
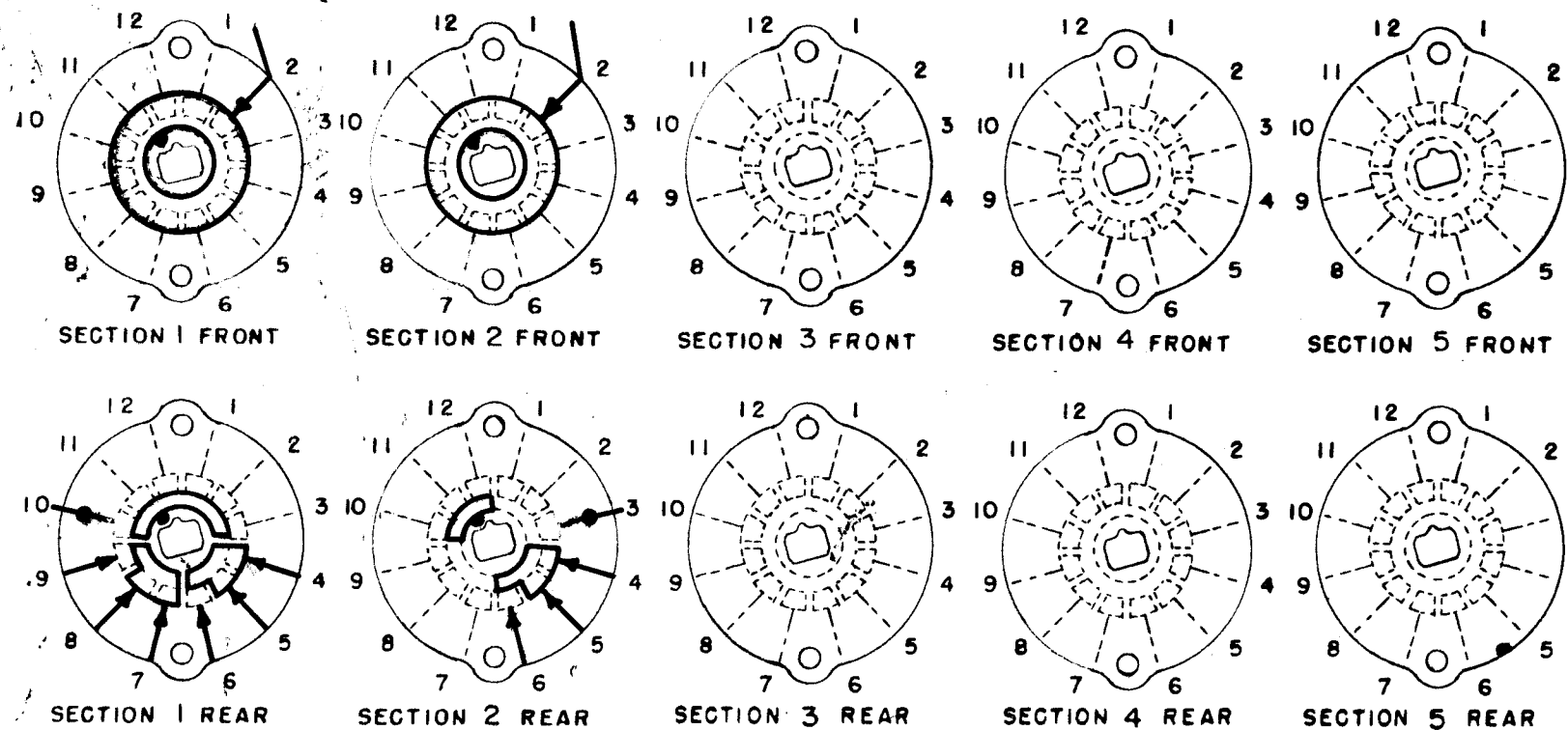
FINISH REQUIREMENTS: COMMERCIAL ARMY NAVY

SALT TEST (IF ANY GIVE DETAILS) 200 HOUR

HARDWARE: SUPPLY

1 3/8-32 NUTS 2 ACROSS FLATS

1 3/8 INTERNAL TOOTH LOCKWASHERS



SYMBOLS USED IN MARKING PRINT

REVERSE SHORT CLIP

OAK TYPE F SWITCH

OUTLINE ROTOR BLADES AS SHOWN ABOVE WITH SWITCH IN EXTREME COUNTER-CLOCKWISE POSITION

ISSUE	ITEM	CHANGED FROM	DATE	CH. NO.	DRAFTS	CHECKER	ENG. APP.
B	1	5/32 DIM WAS 1/8 (NUT)	1-31-62	6268	G.S.	<i>[Signature]</i>	<i>[Signature]</i>
A	1	7/8 Dim. Was 1 (SHAFT)	12-28-61	6128	L.A.	<i>[Signature]</i>	<i>[Signature]</i>

TOLERANCES: DEC. DIM. \pm , FRAC. DIM. \pm , ANGULAR DIM. \pm

SCALE: A

MAXIMUM ALLOWABLE TOLERANCES HAVE BEEN DETERMINED AND ANY DEVIATIONS WILL BE CAUSE FOR REJECTION. REMOVE ALL BURRS AND SHARP EDGES

REQ. PER UNIT	MODEL	PROJECT NO.	ASSY. NO.	DATE
1	SBS-1			12-13-61

REQ. ITEM	PART NO.	DESCRIPTION	SYMBOL
THE TECHNICAL MATERIEL CORP. MAMARONECK, NEW YORK			
SWITCH, ROTARY AFC (ON-OFF)			
TYPE & TEMPER	HEAT TREAT. SPEC.	DRAWN	CHECKED
		<i>[Signature]</i>	<i>[Signature]</i>
FINISH & SPEC. NO.		FINAL APPROVAL	
		SW-299 B	