

THE CONTENTS OF THIS DRAWING ARE THE EXCLUSIVE PROPERTY OF THE TECHNICAL MATERIEL CORP. ITS UNAUTHORIZED USE OR REPRODUCTION IN WHOLE OR IN PART IS STRICTLY FORBIDDEN.

REQ. PER UNIT

USED ON

MODEL

ASS'Y. NO.

DATE

Stand.

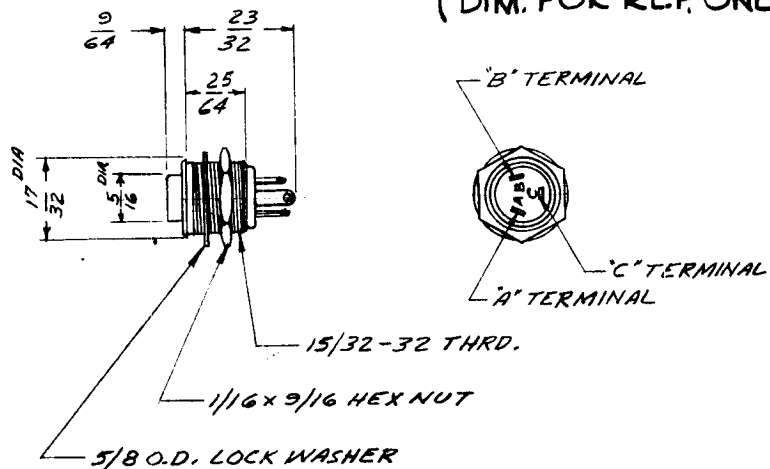
10/25/61

SW-296

A

TMC PART NO.	MFG'RS NO.	BUTTON COLOR	CONTACT ARRANGE	CONTACT ARRANGEMENT
SW-296-1	903	RED	A	<p>Break-make</p>
SW-296-2	913	BLACK	A	
SW-296-3	903D	RED	B	
SW-296-4	913D	BLACK	B	
				<p>Make before break</p>

(DIM. FOR REF. ONLY)



NOTES:

- HOUSING- Brass, Nickel Plated
- INSULATOR- Linen base
- TERMINALS- Brass, silver plated
- MTC. HARDWARE- Nut, brass, nickel plated
- Lockwasher, steel.
- RATINGS- 250 ma, non-induct, AC, 30 w. max.

STANDARD DRAWING

REQ.	ITEM	PART NO.	DESCRIPTION	SYMBOL		
			THE TECHNICAL MATERIEL CORP. MAMARONECK, NEW YORK			
			SWITCH, PUSH BUTTON			
			MATERIAL			
A			CLARIFIED BUTTON COLOR COLUMN ON CHART, WAS BOTTOM COLOR.			
SYM	DESCRIPTION	DATE	CH. NO.	DRAFTS	CHECKER	ENG. APP.
	UNLESS OTHERWISE SPECIFIED: DIMENSIONS ARE IN INCHES. TOLERANCES ON FRAC. ± 1/64 DEC. ± .005 ANGLES ± 1/2°		SCALE: S401-154			
			MAXIMUM ALLOWABLE TOLERANCES HAVE BEEN DETERMINED AND ANY DEVIATIONS WILL BE CAUSE FOR REJECTION. REMOVE ALL BURRS AND SHARP EDGES			
			TYPE & TEMPER	HEAT TREAT. SPEC.		
			FINISH & SPEC. NO.			
			W.S. 10-25-61	RUIZZO		
			DRAWN	CHECKED		FINAL APPROVAL
						SW-296 A